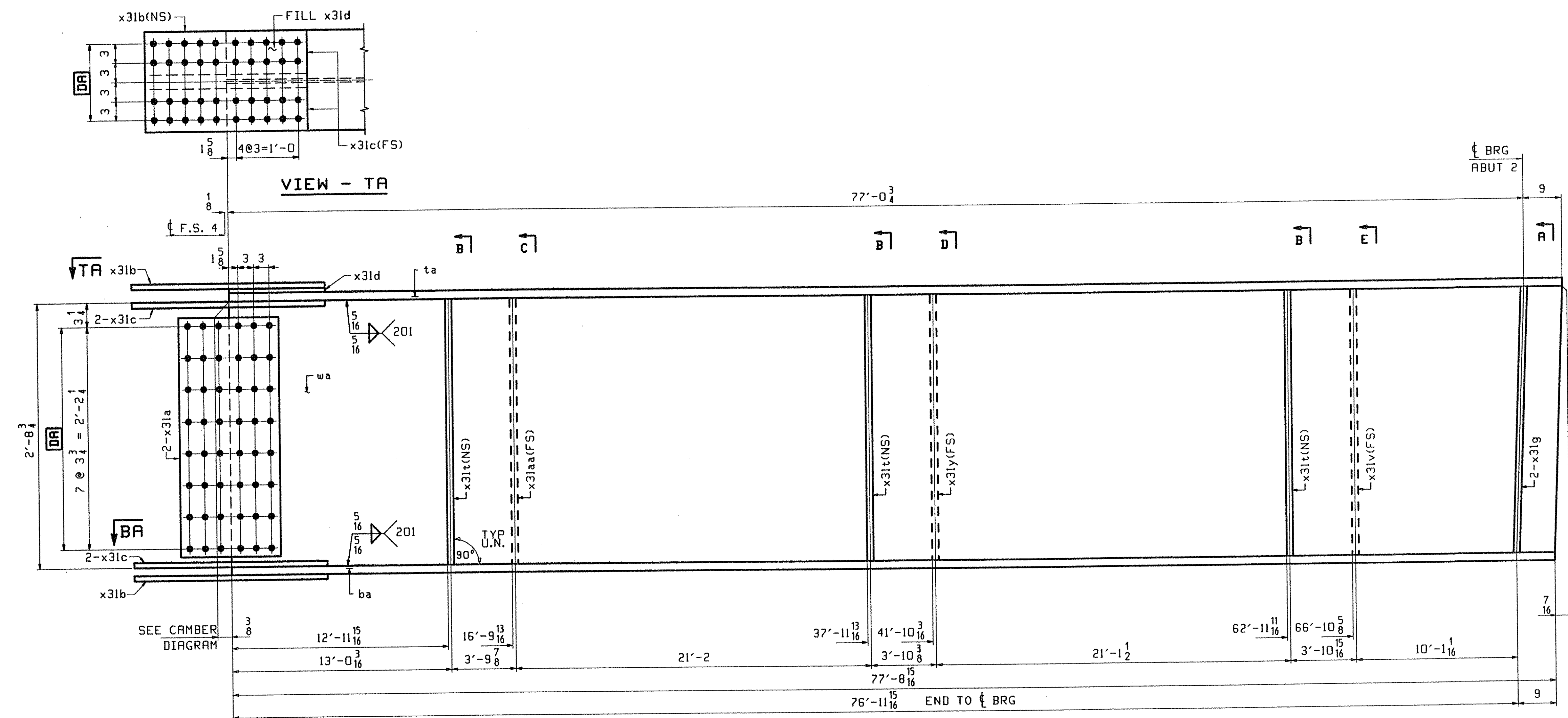


ABM INFO		SHIP	BILL OF MATERIAL			JOB NO.	DRAWING NO.	REV.
PAGE	LINE	MARK	QTY	MARK	MATERIAL	REMARKS	HT	PROCUREMENT NOTES
		G3E	1		GIRDER		16217	
301	N		1	wa	PL 1/2 x 36 7/8	77' 9 3/4"		(M270-50HT2) (H2-3)
301	G		1	ta	PL 5/8 x 16	77' 9 3/4"		(M270-50HT2) (H2-3)
301	A		1	ba	PL 5/8 x 16	77' 8 15/16"		(M270-50HT2) (H2-3)
302	B		2	x31a	PL 1/2 x 29 3/4	1' 7"		(M270-50HT2) (H2-3)
302	C		2	x31b	PL 5/8 x 16	2' 7"		(M270-50HT2) (H2-3)
302	D		4	x31c	PL 5/8 x 7	2' 7"		(M270-50HT2) (H2-3)
302	F		1	x31d	PL 3/4 x 16	1' 3 3/8"		FILL
302	H		3	x31t	PL 1/2 x 5	2' 8 3/4"		
302	M		1	x31aa	PL 1/2 x 5	2' 8 3/4"		
302	H		1	x31y	PL 1/2 x 5	2' 8 3/4"		
302	M		1	x31v	PL 1/2 x 5	2' 8 3/4"		
302	K		2	x31g	PL 7/8 x 7 3/4	2' 8 3/4"		



ONE - GIRDER - G3E

1. FOR GIRDER STANDARD DETAILS SEE DRAWING X31.
2. FOR CAMBER AND FLANGE DIAGRAMS SEE DRAWING C301.
3. FOR HORIZONTAL CURVING DIAGRAM SEE DRAWING HC301.
4. FOR GENERAL NOTES SEE DRAWING GN301.

SEE CAMBER DIAGRAM

TVGA
Engineering, Surveying, P.C.

NO EXCEPTIONS TAKEN REJECTED
 FURNISH AS CORRECTED REVISE AND RESUBMIT

ENGINEER has reviewed Shop Drawings and Samples and other data which Contractor is required to furnish, only for conformance with the information given in the Contract Documents and compatibility with the design concept of the completed Project as a functional whole, as detailed in the Contract Documents. Such review is not intended to assure methods, techniques, sequence, or construction of construction or to safety procedures and programs incident thereto. Contractor is responsible for dimensions to be confirmed and completed at the job site. For information that pertains solely to the fabrication processes or to techniques of construction, and for acceptance of the work of all trades.

BY: *P. W. S. T.*
DATE: 4/19/01

OUT FOR APPROVAL	3-13-01								
OUT FOR APPROVAL									
ISSUED TO SHOP									
FIELD & OFFICE									

REV.	REMARKS	DATE	DMN	CHK	APP	Q.A.	NO.	DIA.	LGT	TYPE	WASHER
	MATERIAL: M270 GR 50W										
	ELECTRODES:										
	HOLES: 15/16 Ø (UN)										
	SHOP BOLTS: 7/8 Ø (UN)										
SURFACE PREP. & PAINT: -STEEL WITHIN 10'-0 OF ABUT 1 SHALL BE PAINTED (SEE GN301) -ALL OTHER STEEL SHALL BE BLAST CLEANED AND LEFT UNPAINTED.											
DESCRIPTION: GIRDER - G3E											
JOB: BRIDGE NO. 485 I-89 SB OVER LITTLE RIVER I-89 IMPROVEMENTS TOWN OF MIDDLESEX-BOLTON, VERMONT										DRAWN BY	DATE
										PHG	02/26/01
										CHKD BY	
										ELC	03/7/01
										APPROV BY	
										SUPERVISOR	W. J. GATTI
PROJ NO. IM-089-2(26)											
CUSTOMER: VERMONT AGENCY OF TRANSPORTATION											
CASCO BAY STEEL STRUCTURES, INC.										JOB NO.	DRG. NO.
75 SPRING HILL ROAD SACO, MAINE 04072										118-485	323
PHONE (207) 282-7360 FAX. (207) 282-1179										REV.	△

