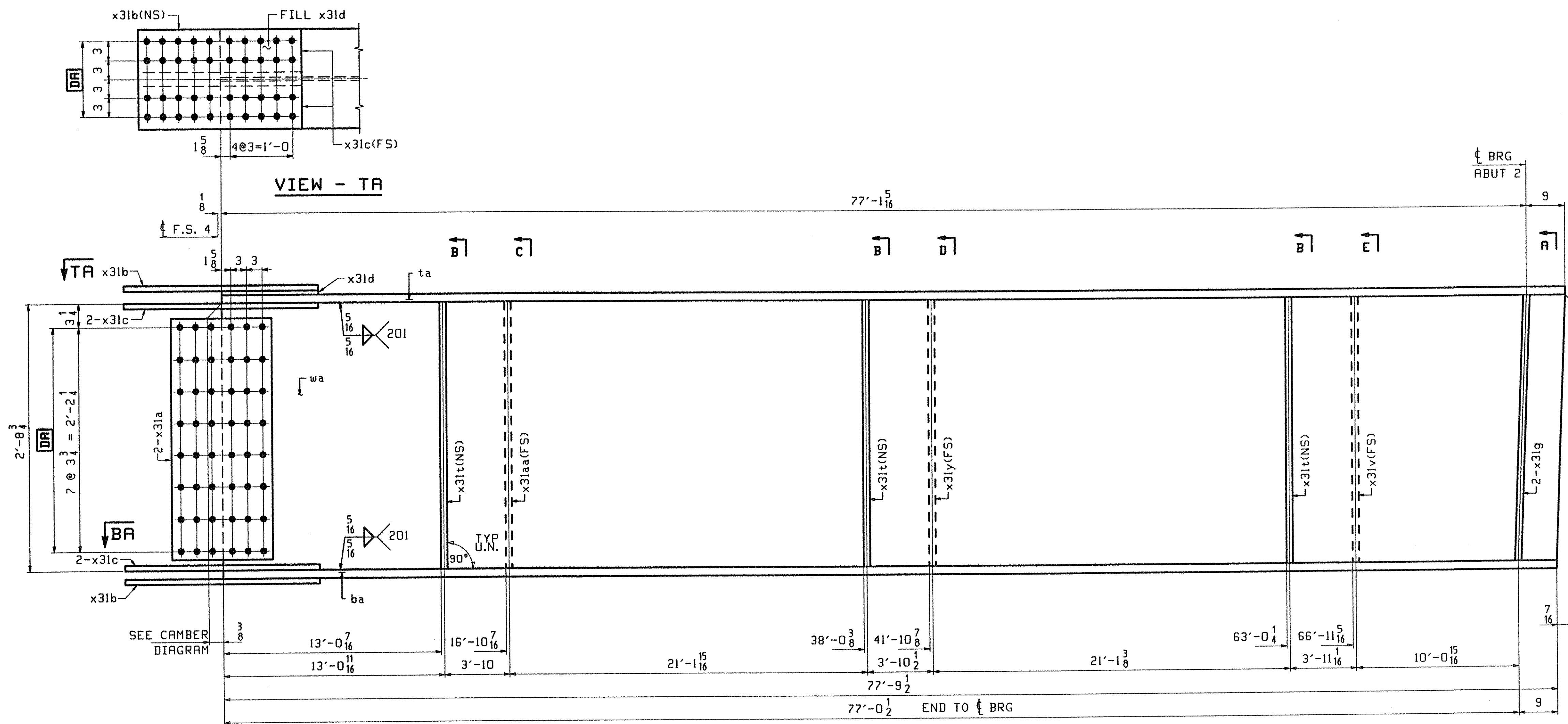


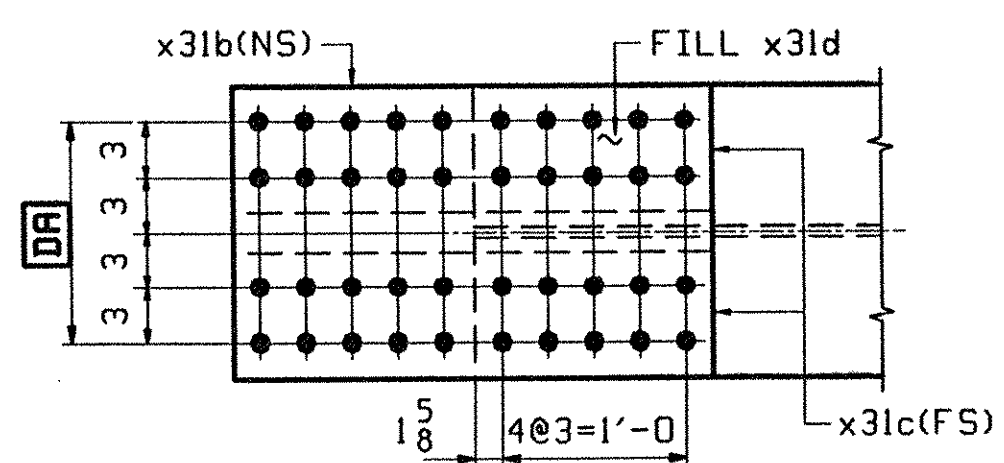
ABM INFO		SHIP	BILL OF MATERIAL				JOB NO.	DRAWING NO.	REV.
PAGE	LINE	MARK	QTY	MARK	MATERIAL	LENGTH FT INCHES	REMARKS	WT	PROCUREMENT NOTES
		G2E	1		GIRDER			16226	
301	N		1	wa	PL 1/2 x 36 7/8	77 10 5/16	(M220-50WT2) (H2-3)		
301	G		1	ta	PL 5/8 x 16	77 10 5/16	(M220-50WT2) (H2-3)		
301	A		1	ba	PL 1 1/8 x 16	77 9 7/8	(M220-50WT2) (H2-3)		
302	B		2	x31a	PL 1/2 x 29 3/4	1 7	(M220-50WT2) (H2-3)		
302	C		2	x31b	PL 5/8 x 16	2 7	(M220-50WT2) (H2-3)		
302	D		4	x31c	PL 5/8 x 7	2 7	(M220-50WT2) (H2-3)		
302	F		1	x31d	PL 3/4 x 16	1 3 3/8	FILL		
302	M		3	x31t	PL 1/2 x 5	2 0 3/4			
302	M		1	x31aa	PL 1/2 x 5	2 0 3/4			
302	M		1	x31y	PL 1/2 x 5	2 0 3/4			
302	M		1	x31v	PL 1/2 x 5	2 0 3/4			
302	K		2	x31g	PL 7/8 x 7 3/4	2 0 3/4			



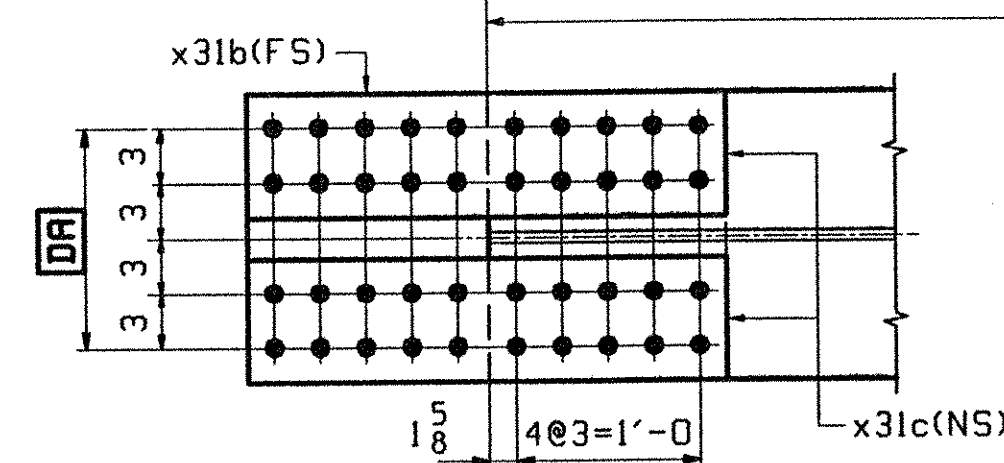
SEE CAMBER DIAGRAM

ONE GIRDER - G2E

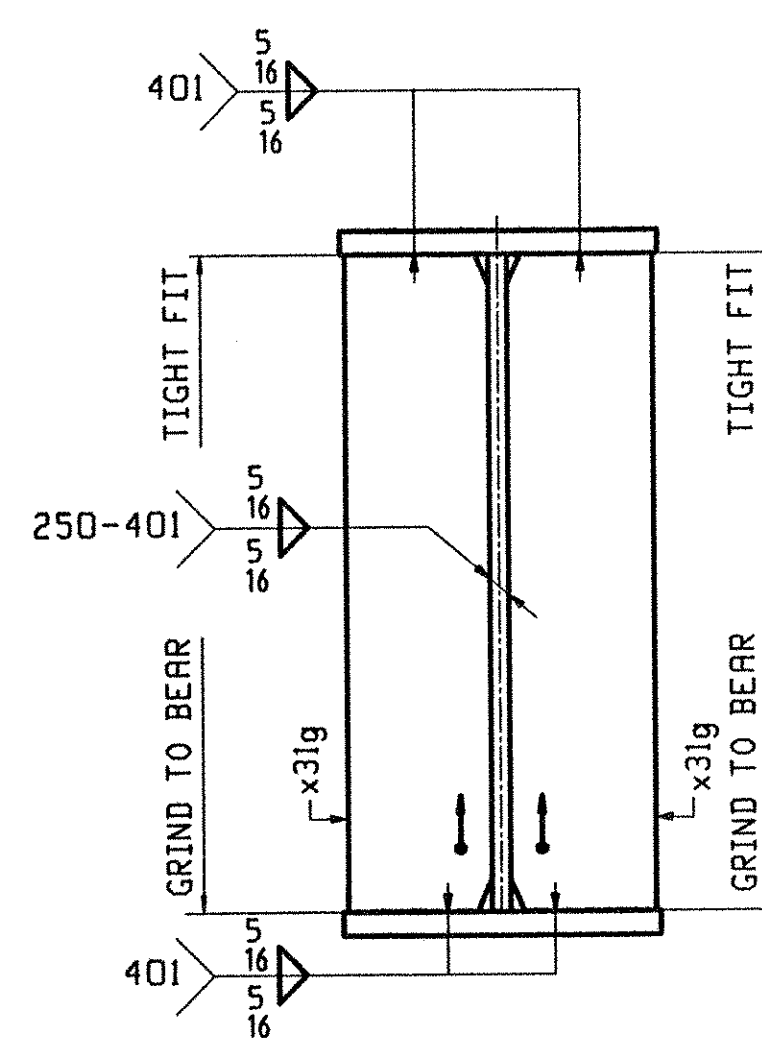
1. FOR GIRDER STANDARD DETAILS SEE DRAWING X31.
2. FOR CAMBER AND FLANGE DIAGRAMS SEE DRAWING C301.
3. FOR HORIZONTAL CURVING DIAGRAM SEE DRAWING HC301.
4. FOR GENERAL NOTES SEE DRAWING GN301.



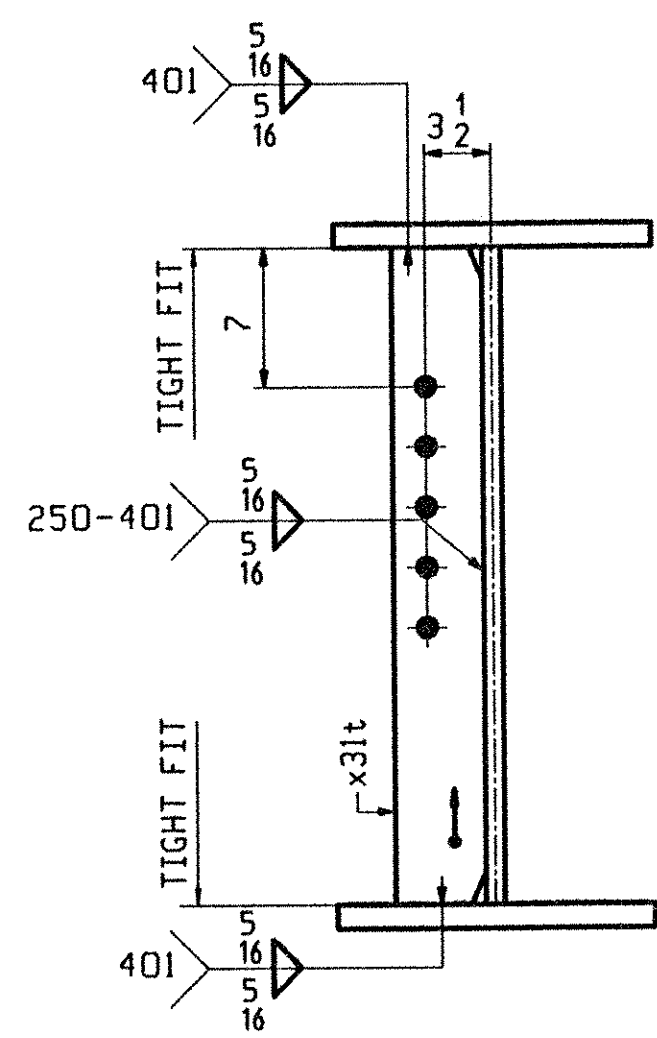
VIEW - TA



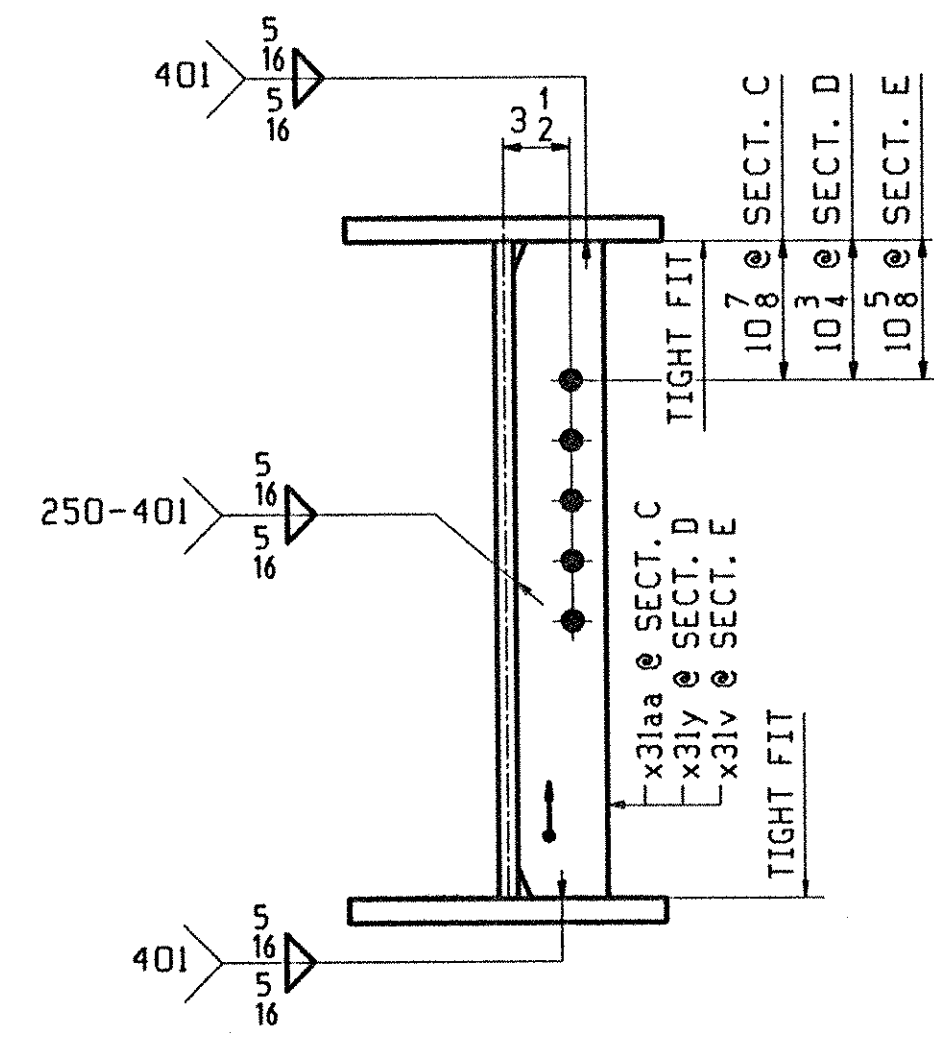
SECTION - BA



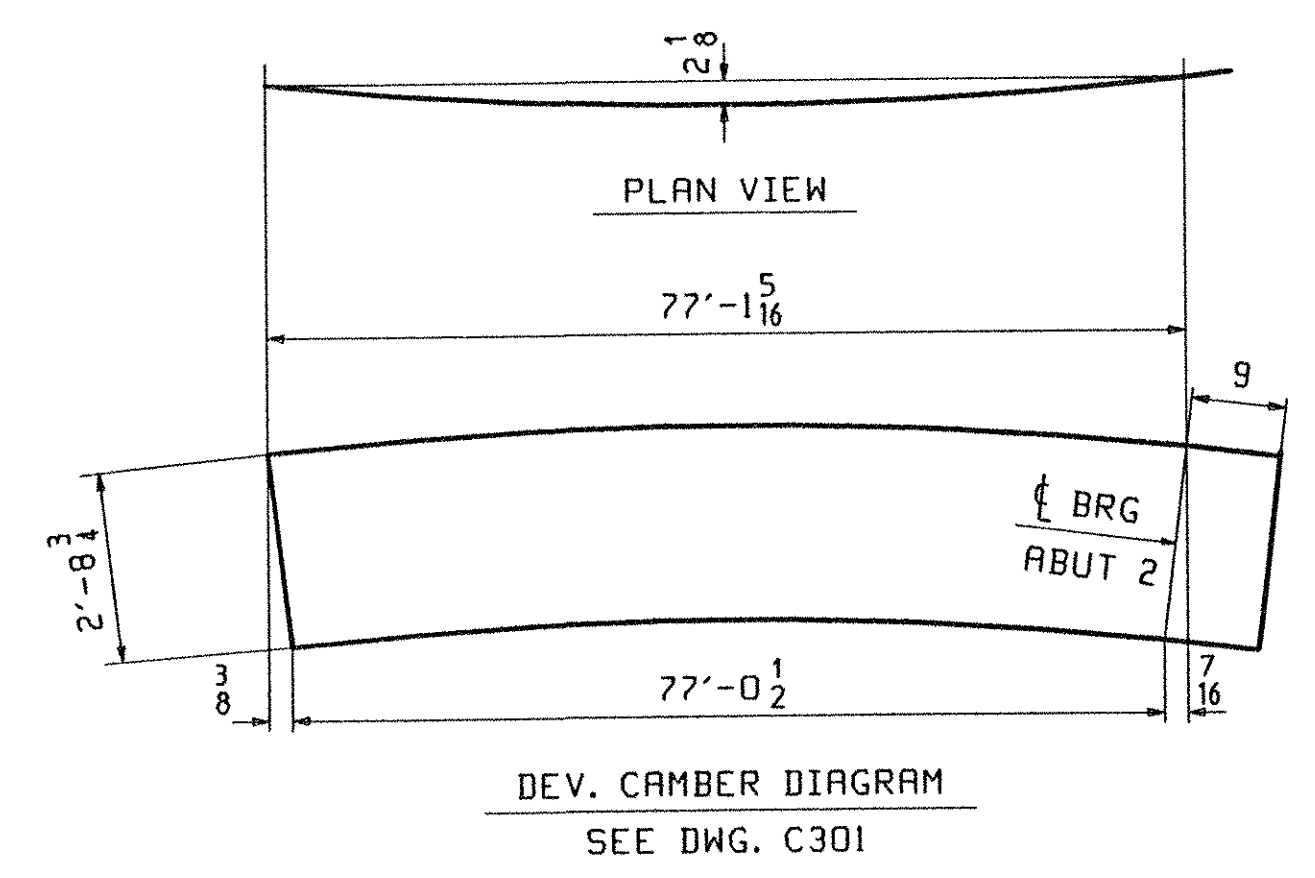
SECTION - A



SECTION - B



SECTION - C, D & E



TVGA
Engineering, Surveying, P.C.

NO EXCEPTIONS TAKEN REJECTED
 FURNISH AS CORRECTED REVISE AND RESUBMIT

ENGINEER has reviewed Shop Drawings and Samples and other data which Contractor is required to submit, only for compliance with the information given in the Contract Documents and compatibility with the design concept of the Project as a whole. It is indicated in the Contract Documents that such review is not intended to constitute, in whole or in part, a warranty, approval or procedure of construction or to safety procedure and program incident thereto. Contractor is responsible for dimensions to be specified and controlled at the job site, for information that pertains solely to the fabrication processes or to techniques of construction, and for coordination of the work of all trades.

BY: *[Signature]*
DATE: 4/9/01

OUT FOR APPROVAL	3-13-01								
OUT FOR APPROVAL									
ISSUED TO SHOP									
FIELD & OFFICE									

REV.	REMARKS	DATE	DWN	CHK	APP	O.A.	NO.	DIA.	LGT	TYPE	WASHER
	MATERIAL: M220 GR 50W										
	ELECTRODES:										
	HOLES: 15/16 Ø (UN)										
	SHOP BOLTS: 7/8 Ø (UN)										
SURFACE PREP. & PAINT: -STEEL WITHIN 10'-0" OF ABUT 1 SHALL BE PAINTED (SEE GN301) -ALL OTHER STEEL SHALL BE BLAST CLEANED AND LEFT UNPAINTED.											
DESCRIPTION: GIRDER - G2E											
JOB: BRIDGE NO. 485 I-89 SB OVER LITTLE RIVER I-89 IMPROVEMENTS TOWN OF MIDDLESEX-BOLTON, VERMONT											
DRAWN BY: PHG DATE: 02/26/01											
CHECKED BY: ELC DATE: 03/7/01											
APPROVED BY: SUPERVISOR M. J. GATTI											
PROJ NO. IM-089-2(26)											
CUSTOMER: VERMONT AGENCY OF TRANSPORTATION											
CASCO BAY STEEL STRUCTURES, INC.											
75 SPRING HILL ROAD SACO, MAINE 04072											
PHONE (207) 282-7360 FAX. (207) 282-1179											
JOB NO. DRG. NO. 118-485 322											
REV. <input type="checkbox"/>											