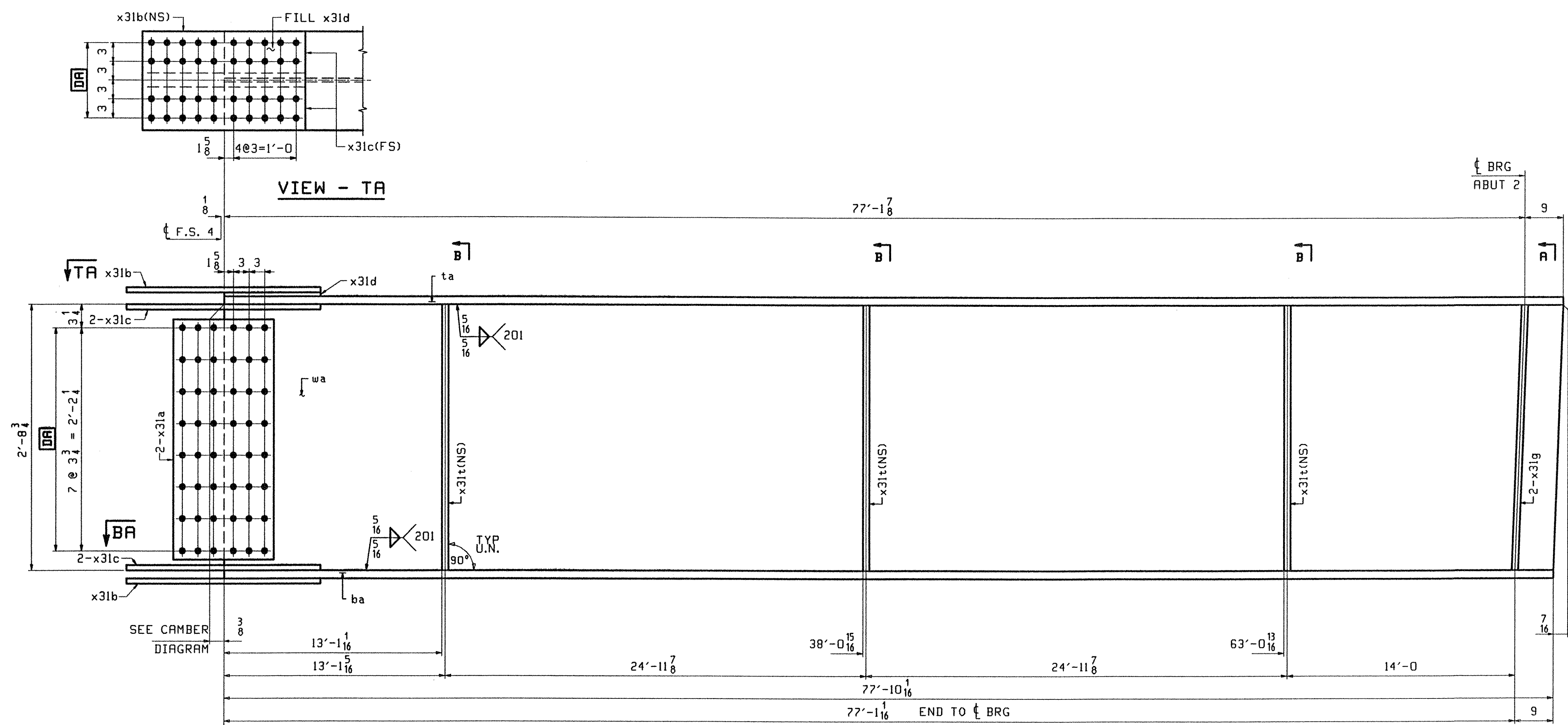


JOB NO.		DRAWING NO.		REV.					
321		321							
ABM INFO	SHIP	BILL OF MATERIAL							
PAGE	LINE	MARK	QTY	MARK	MATERIAL	LENGTH	REMARKS	WT	PROCUREMENT NOTES
						FT INCHES			
		GIE	1		GIRDER			16166	
301	N		1	wa	PL $\frac{1}{2}$ x 36 $\frac{7}{8}$	77 10 $\frac{7}{8}$	(M270-50MT2) (#2-3)		
301	G		1	ta	PL $\frac{5}{8}$ x 16	77 10 $\frac{7}{8}$	(M270-50MT2) (#2-3)		
301	A		1	ba	PL $\frac{3}{4}$ x 16	77 10 $\frac{7}{8}$	(M270-50MT2) (#2-3)		
302	B		2	x31a	PL $\frac{1}{2}$ x 29 $\frac{3}{4}$	1 7	(M270-50MT2) (#2-3)		
302	C		2	x31b	PL $\frac{5}{8}$ x 16	2 7	(M270-50MT2) (#2-3)		
302	D		4	x31c	PL $\frac{5}{8}$ x 7	2 7	(M270-50MT2) (#2-3)		
302	F		1	x31d	PL $\frac{3}{4}$ x 16	1 3 $\frac{3}{8}$	FILL		
302	M		3	x31t	PL $\frac{1}{2}$ x 5	2 8 $\frac{3}{4}$			
302	K		2	x31g	PL $\frac{5}{8}$ x 7 $\frac{1}{4}$	2 8 $\frac{3}{4}$			



**ONE - GIRDER - G1E**

1. FOR GIRDER STANDARD DETAILS SEE DRAWING X31.
2. FOR CAMBER AND FLANGE DIAGRAMS SEE DRAWING C301.
3. FOR HORIZONTAL CURVING DIAGRAM SEE DRAWING HC301.
4. FOR GENERAL NOTES SEE DRAWING GN301.

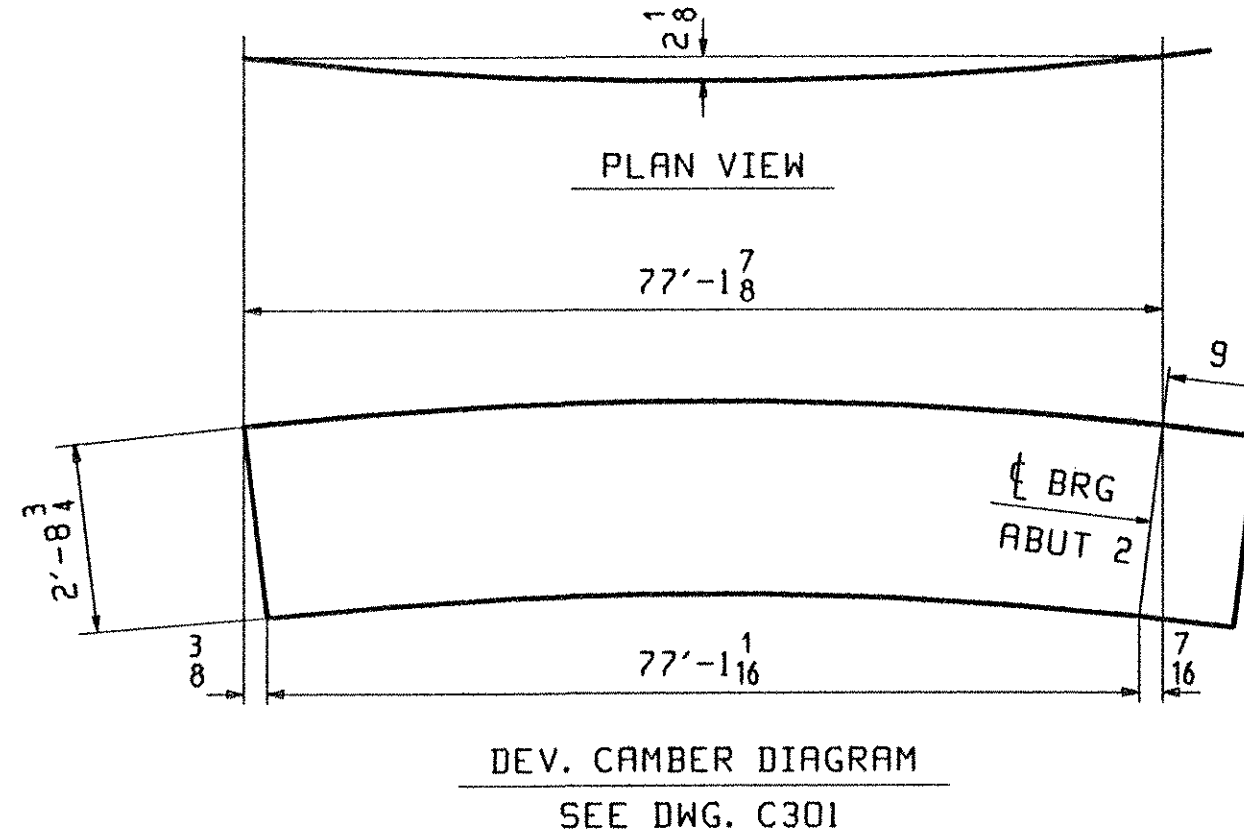
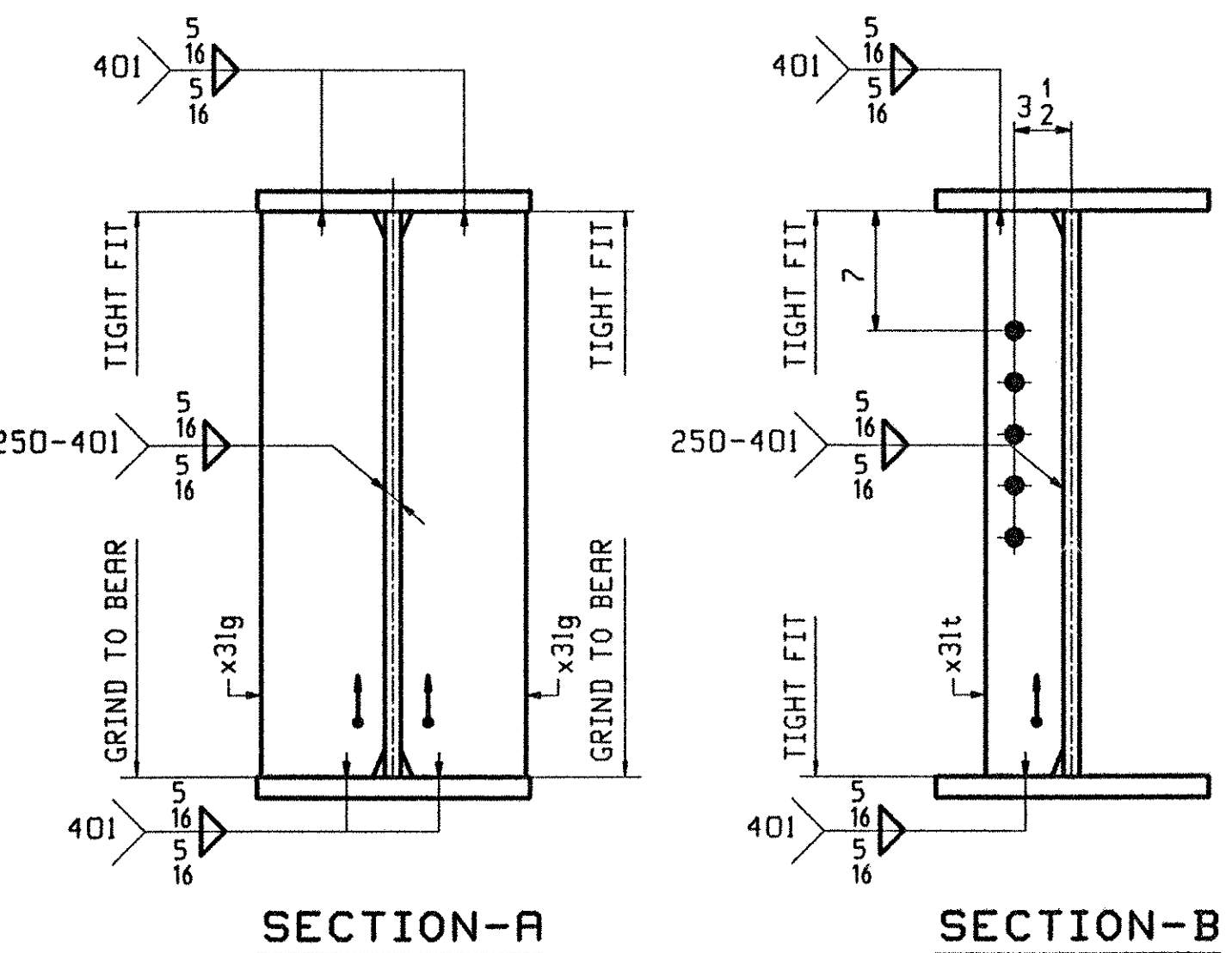
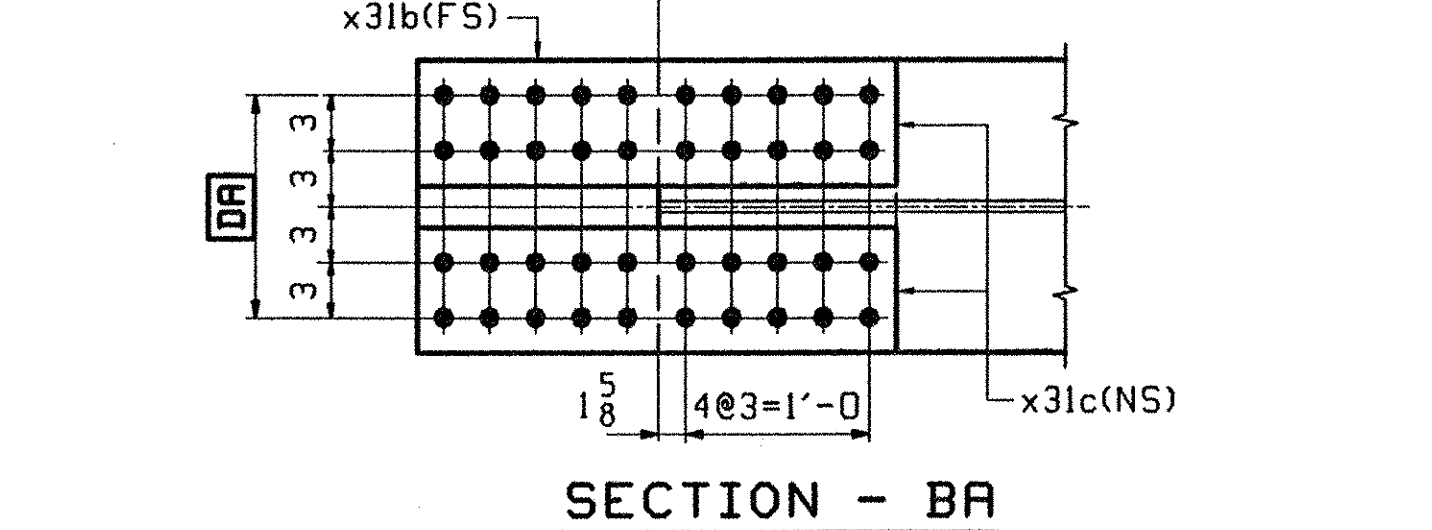
SEE CAMBER DIAGRAM

**TVGA**  
Engineering, Surveying, P.C.

NO EXCEPTIONS TAKEN  REJECTED  
 FURNISH AS CORRECTED  
 REVISE AND RESUBMIT

ENGINEER has reviewed Shop Drawings and Samples and other data which Contractor is required to submit, only for conformance with the information set in the Contract Documents and compliance with the design intent of the Project as indicated in the Contract Documents. Shop review is limited to means, methods, techniques, equipment or procedures of construction or to safety precautions and programs incident thereto. Contractor is responsible for dimensions to be confirmed and corrected at the job site for information that pertains solely to the fabrication processes or to techniques of construction, and for coordination of the work of all trades.

BY: *P. W. S. C.*  
DATE: 4/19/01



OUT FOR APPROVAL	3-13-01								
OUT FOR APPROVAL									
ISSUED TO SHOP									
FIELD & OFFICE									

REV.	REMARKS	DATE	DWN	CHK	APP	Q.A.	NO.	DIA.	LGT	TYPE	WASHER
	MATERIAL:										

**SURFACE PREP. & PAINT:**  
 -STEEL WITHIN 10'-0 OF ABUT 1 SHALL BE PAINTED (SEE GN301)  
 -ALL OTHER STEEL SHALL BE BLAST CLEANED AND LEFT UNPAINTED.

**DESCRIPTION:** GIRDER - G1E

**JOB:** BRIDGE NO. 485  
 I-89 SB OVER LITTLE RIVER  
 I-89 IMPROVEMENTS  
 TOWN OF MIDDLESEX-BOLTON, VERMONT

**PROJ NO.** IM-089-2(26)

**CUSTOMER:** VERMONT AGENCY OF TRANSPORTATION

**CASCO BAY STEEL STRUCTURES, INC.**  
 75 SPRING HILL ROAD SACO, MAINE 04072  
 PHONE (207) 282-7360 FAX. (207) 282-1179

**JOB NO.** 118-485  
**DRG. NO.** 321  
**REV.**