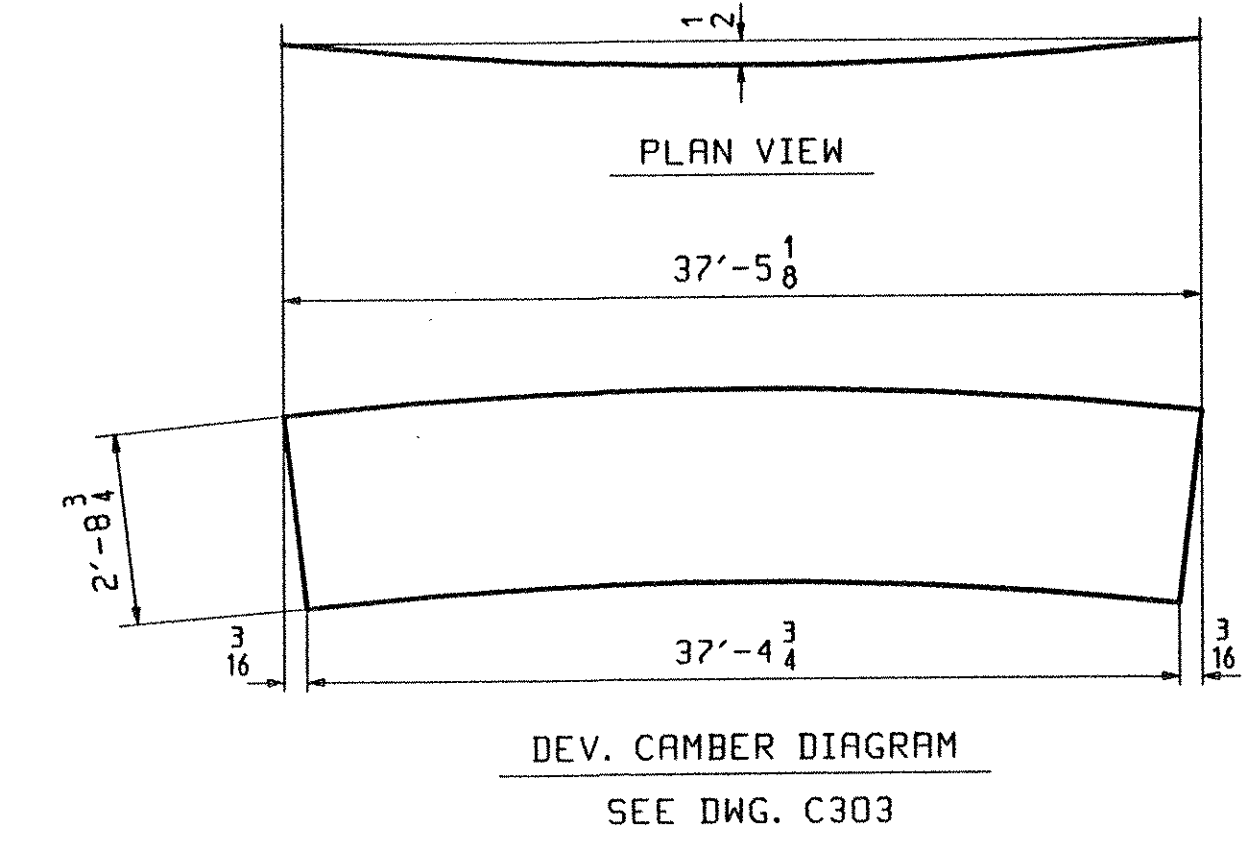
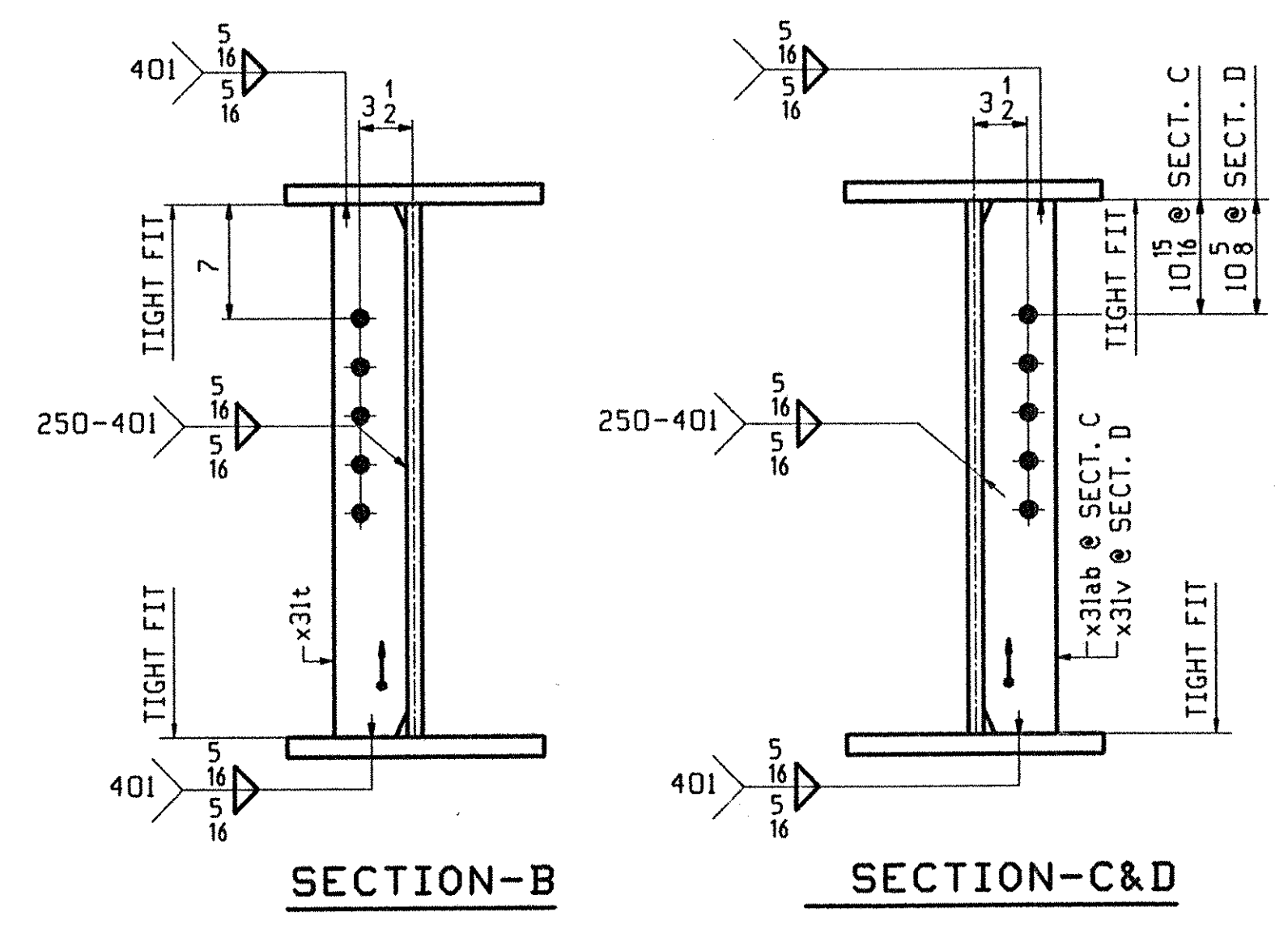
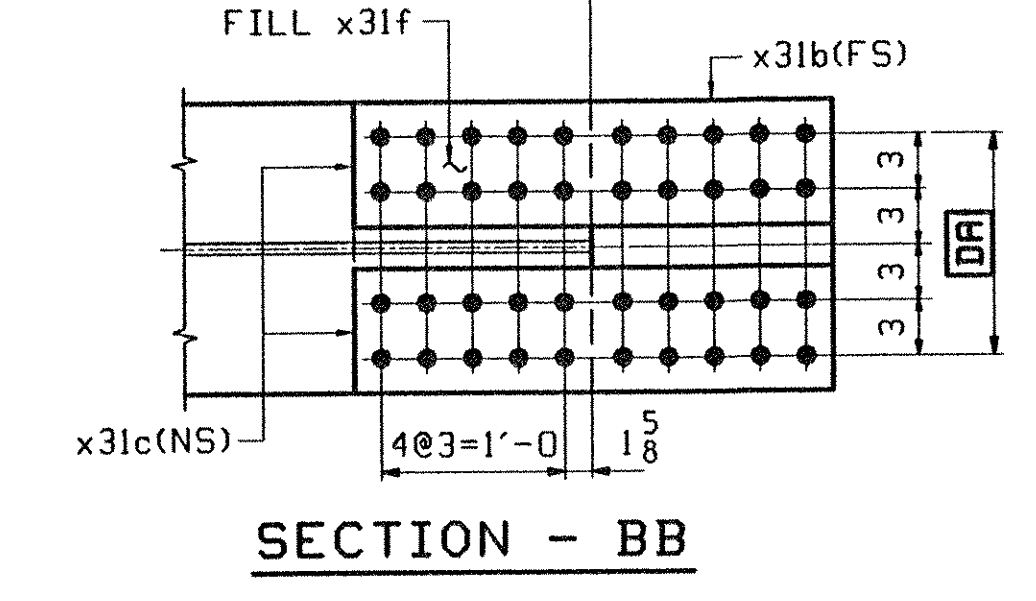
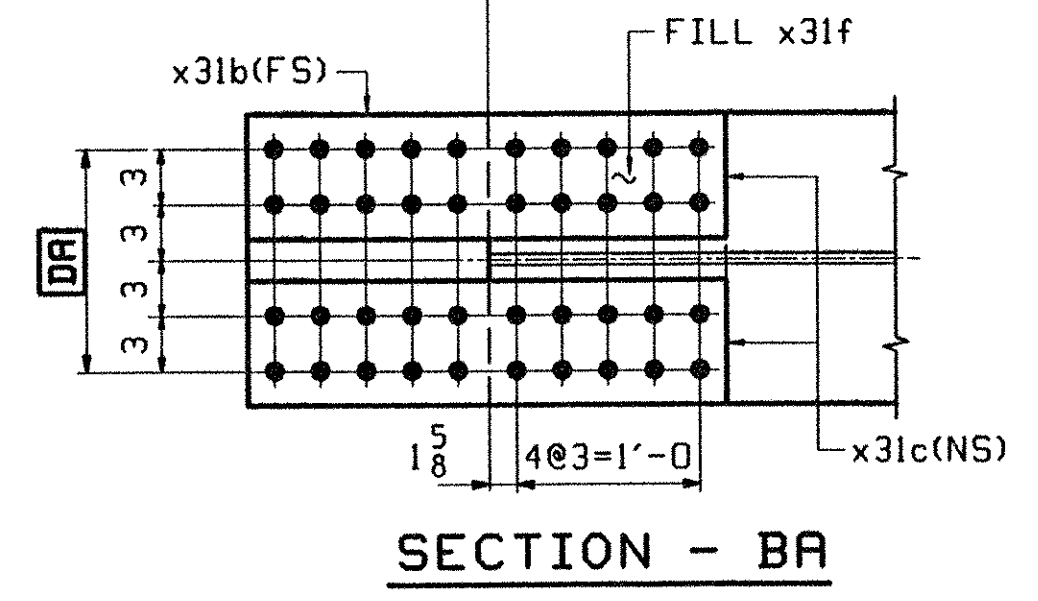


**ONE - GIRDER - G3C**

1. FOR GIRDER STANDARD DETAILS SEE DRAWING X31.
2. FOR CAMBER AND FLANGE DIAGRAMS SEE DRAWING C303.
3. FOR HORIZONTAL CURVING DIAGRAM SEE DRAWING HC301.
4. FOR GENERAL NOTES SEE DRAWING GN301.



JOB NO.		DRAWING NO.		REV.			
313		313		313			
ABM INFO	SHIP	BILL OF MATERIAL		REMARKS	WT	PROCUREMENT NOTES	
PAGE	LINE	MARK	QTY	MARK	MATERIAL	LENGTH FT INCHES	
		G3C	1		GIRDER		7094
301	U		1	wa	PL 1/2 x 33 7/8	37 5 1/8	(M270-50HT2) (H2-3)
301	L		1	ta	PL 5/8 x 16	37 5 1/8	(M270-50HT2) (H2-3)
301	E		1	ba	PL 5/8 x 16	37 4 3/4	(M270-50HT2) (H2-3)
302	B		4	x31a	PL 1/2 x 29 3/4	1 7	(M270-50HT2) (H2-3)
302	C		4	x31b	PL 5/8 x 16	2 7	(M270-50HT2) (H2-3)
302	D		8	x31c	PL 5/8 x 7	2 7	(M270-50HT2) (H2-3)
302	F		2	x31d	PL 3/4 x 16	1 3 3/8	FILL
302	G		2	x31f	PL 1 1/8 x 16	1 3 3/8	FILL
302	M		2	x31t	PL 1/2 x 5	2 0 3/4	
302	M		1	x31ab	PL 2 x 5	2 0 3/4	
302	M		1	x31v	PL 1/2 x 5	2 0 3/4	

**TVGA**  
Engineering, Surveying, P.C.

NO EXCEPTIONS TAKEN  REJECTED  
 FURNISH AS CORRECTED  
 REVISE AND RESUBMIT

ENGINEER has reviewed Shop Drawings and Complies and other data which Contractor is required to furnish, for performance with the information given in the Contract Documents and compliance with the technical portion of the completed Program as a condition of award. It is understood in the Contract Documents. Such review is not intended to constitute a warranty, representation, or guarantee of any kind, and the Contractor is responsible for determining the accuracy and completeness of the information that pertains solely to the fabricator, processes, or to techniques of construction, and for coordination of the work of all trades.

BY: *Pet. W. S.C.*  
DATE: 4/1/01

OUT FOR APPROVAL	3/3-01											
OUT FOR APPROVAL												
ISSUED TO SHOP												
FIELD & OFFICE												
REV.	REMARKS	DATE	DWN	CHK	APP	Q.A.	NO.	DIA.	LGT	TYPE	WASHER	
MATERIAL:	M270 GR 50W	ELECTRODES:		HOLES:	15/16 Ø (UN)	SHOP BOLTS:	7/8 Ø (UN)					
SURFACE PREP. & PAINT: -STEEL WITHIN 10'-0" OF ABUT I SHALL BE PAINTED (SEE GN301) -ALL OTHER STEEL SHALL BE BLAST CLEANED AND LEFT UNPAINTED.												
DESCRIPTION:	GIRDER - G3C					DRAWN BY	PHG	DATE	02/24			
JOB:	BRIDGE NO. 485 I-89 SB OVER LITTLE RIVER I-89 IMPROVEMENTS TOWN OF MIDDLESEX-BOLTON, VERMONT					CHKD BY	ELC	DATE	03/6/01			
PROJ NO.	IM-089-2(26)					APPROV BY	SUPERVISOR		W. J. GATTI			
CUSTOMER:	VERMONT AGENCY OF TRANSPORTATION					Q.A.						
<b>CASCO BAY STEEL STRUCTURES, INC.</b>							JOB NO.	118-485	DRG. NO.	313		
75 SPRING HILL ROAD SARC0, MAINE 04072							PHONE	(207) 282-7360	FAX	(207) 282-1179		
REV. <input type="checkbox"/>												