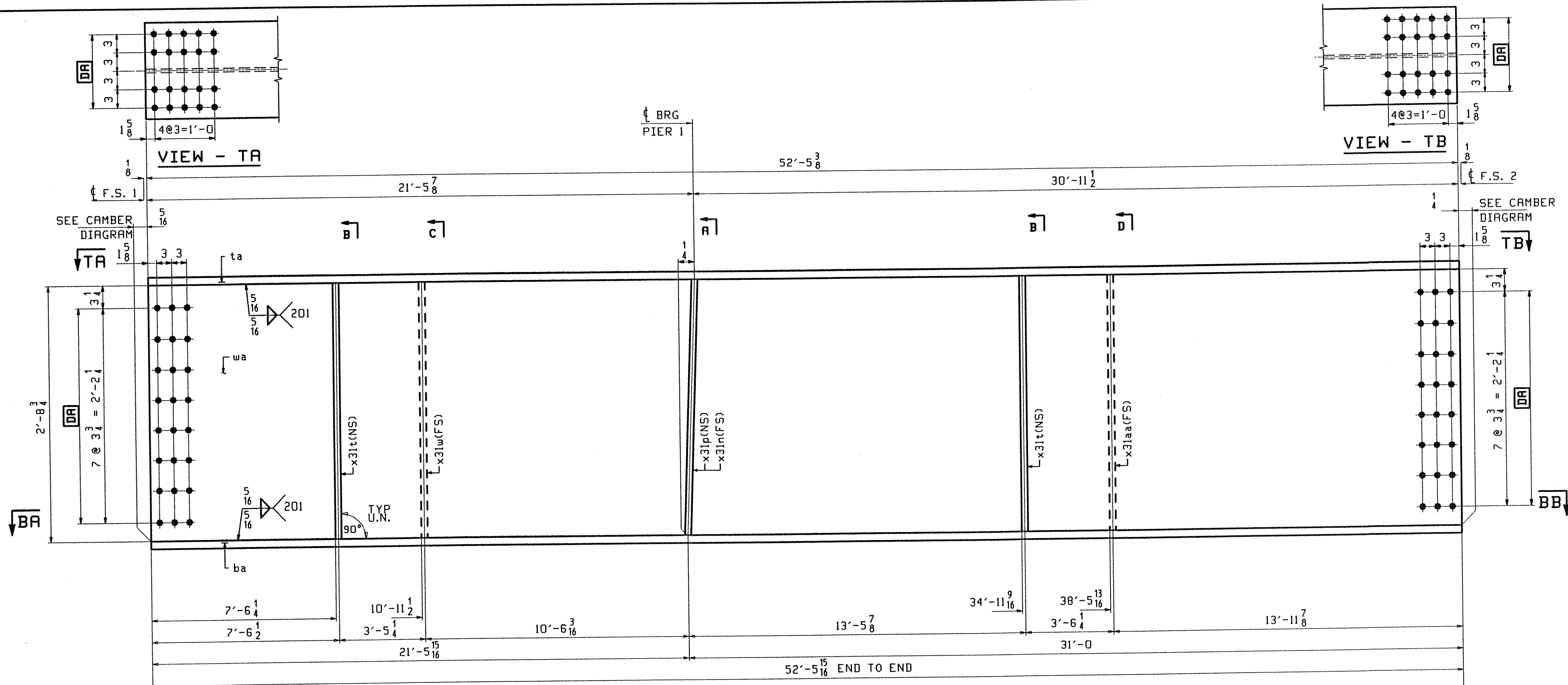
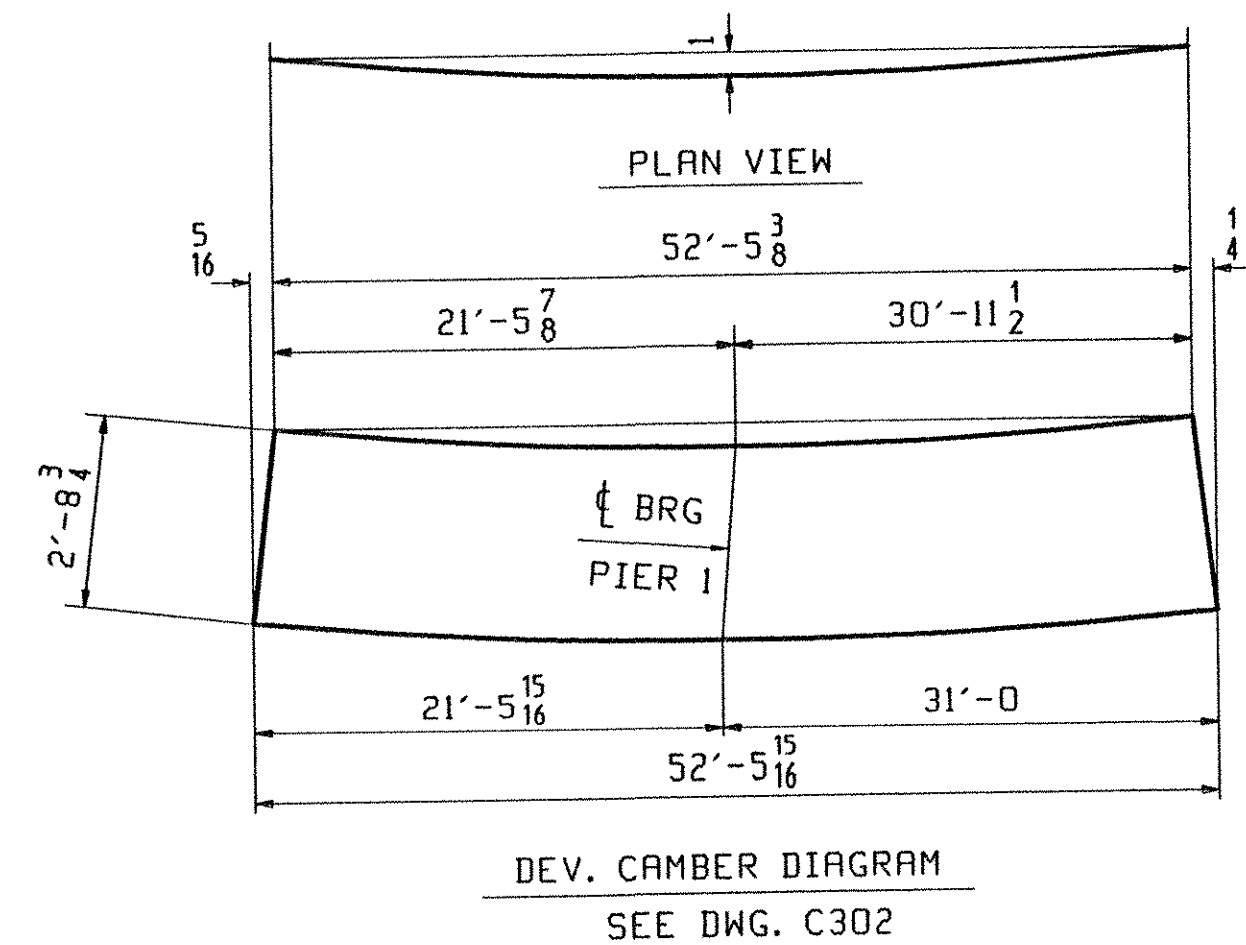
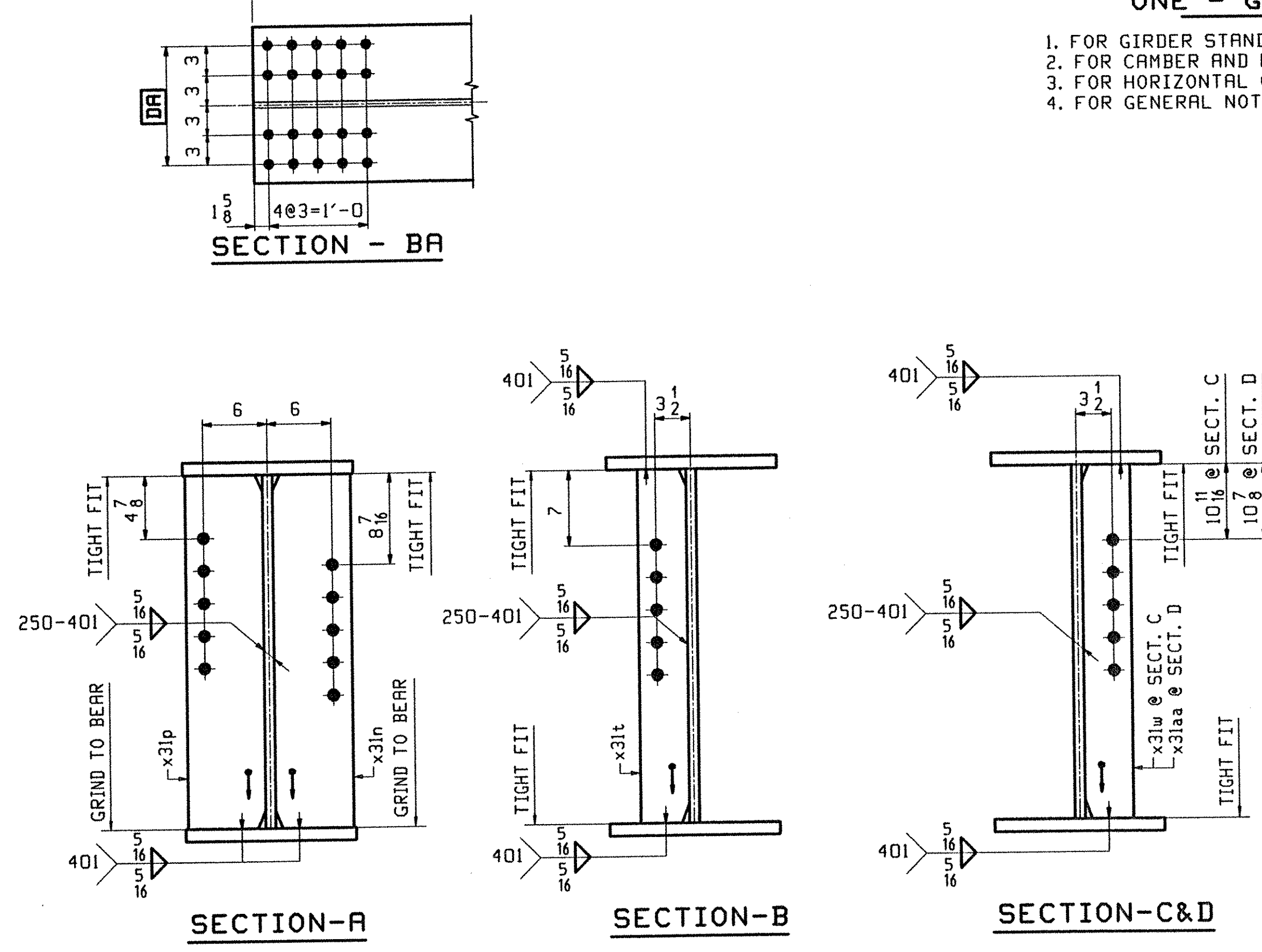


P&G Rev. 8/15/00 EST. 2001 *www.p&g.com*



- ONE - GIRDER - G3B**
1. FOR GIRDER STANDARD DETAILS SEE DRAWING X31.
  2. FOR CAMBER AND FLANGE DIAGRAMS SEE DRAWING C302.
  3. FOR HORIZONTAL CURVING DIAGRAM SEE DRAWING HC301.
  4. FOR GENERAL NOTES SEE DRAWING GN301.



ABM INFO		SHIP				BILL OF MATERIAL		JOB NO.	DRAWING NO.	REV.
PAGE	LINE	MARK	QTY	MARK	MATERIAL	LENGTH	REMARKS	WT	PROCUREMENT	NOTES
						FT				
						INCHES				
		G3B	1		GIRDER				12562	
301	S		1	wa	PL 1/2 x 3/4	52 5/8	(M270-50HT2) (H2-3)			
301	C		1	ta	PL 5/8 x 16	52 5/8	(M270-50HT2) (H2-3)			
301	C		1	ba	PL 1/8 x 16	52 5/8	(M270-50HT2) (H2-3)			
302	M		2	x31t	PL 1/2 x 5	2 8 3/4				
302	M		1	x31w	PL 1/2 x 5	2 8 3/4				
302	K		1	x31p	PL 3/8 x 7 1/2	2 8 3/4				
302	K		1	x31n	PL 3/8 x 7 1/2	2 8 3/4				
302	M		1	x31aa	PL 1/2 x 5	2 8 3/4				

**TVGA**  
 Engineering, Surveying, P.C.  
 NO EXCEPTIONS TAKEN  REJECTED  
 FURNISH AS CORRECTED  
 REVISE AND RESUBMIT  
 ENGINEER has reviewed Shop Drawings and Samples and other data which Contractor is required to submit, only for conformance with the information given in the Contract Documents and compliance with the design concept of the completed Project as a function of the design of the Contract Documents. Such review is not intended to insure, methods, techniques, sequential or particular of construction or to safety procedures and programs incident thereto. Contractor is responsible for dimensions to be confirmed and corrected at the job site, for information that remains solely the fabrication processes or to techniques of construction, and for coordination of the work of all trades.  
 BY: Pit W. S. C.  
 DATE: 4/9/01

OUT FOR APPROVAL	3/30/01									
OUT FOR APPROVAL										
ISSUED TO SHOP										
FIELD & OFFICE										
REV. REMARKS	DATE	DWN	CHK	APP	Q.A.	NO.	DIA.	LGT	TYPE	WASHER
MATERIAL: M270 GR 50W							15/16 φ (UN)		7/8 φ (UN)	
ELECTRODES:		HOLES:		SHOP BOLTS:						
		15/16 φ (UN)		7/8 φ (UN)						
SURFACE PREP. & PAINT: -STEEL WITHIN 10'-0" OF ABUT 1 SHALL BE PAINTED (SEE GN301) -ALL OTHER STEEL SHALL BE BLAST CLEANED AND LEFT UNPAINTED.										
DESCRIPTION:	GIRDER - G3B				DRAWN BY	DATE				
JOB:	BRIDGE NO. 485 I-89 SB OVER LITTLE RIVER I-89 IMPROVEMENTS TOWN OF MIDDLESEX-BOLTON, VERMONT				PHG	02/24/01				
					CHKD BY	03/6/01				
					APPROV BY					
					SUPERVISOR	H. J. GATTI				
PROJ NO.	IM-D89-2(26)				Q.A.					
CUSTOMER: VERMONT AGENCY OF TRANSPORTATION										
<b>CASCO BAY STEEL STRUCTURES, INC.</b>				JOB NO.	118-485		DRG. NO.		308	
75 SPRING HILL ROAD SACO, MAINE 04072				PHONE (207) 282-7360		FAX. (207) 282-1179		REV. <input type="checkbox"/>		