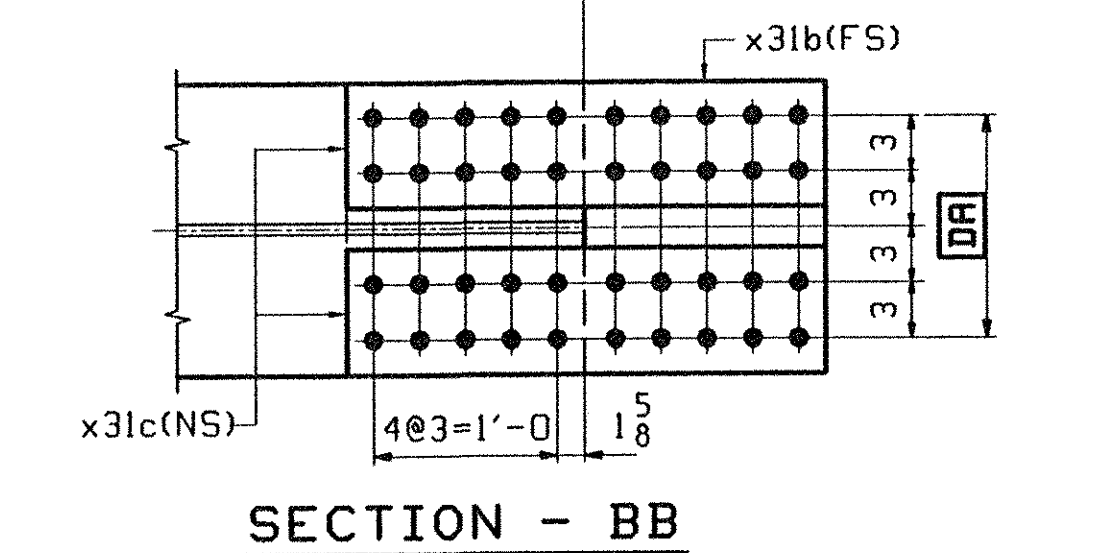
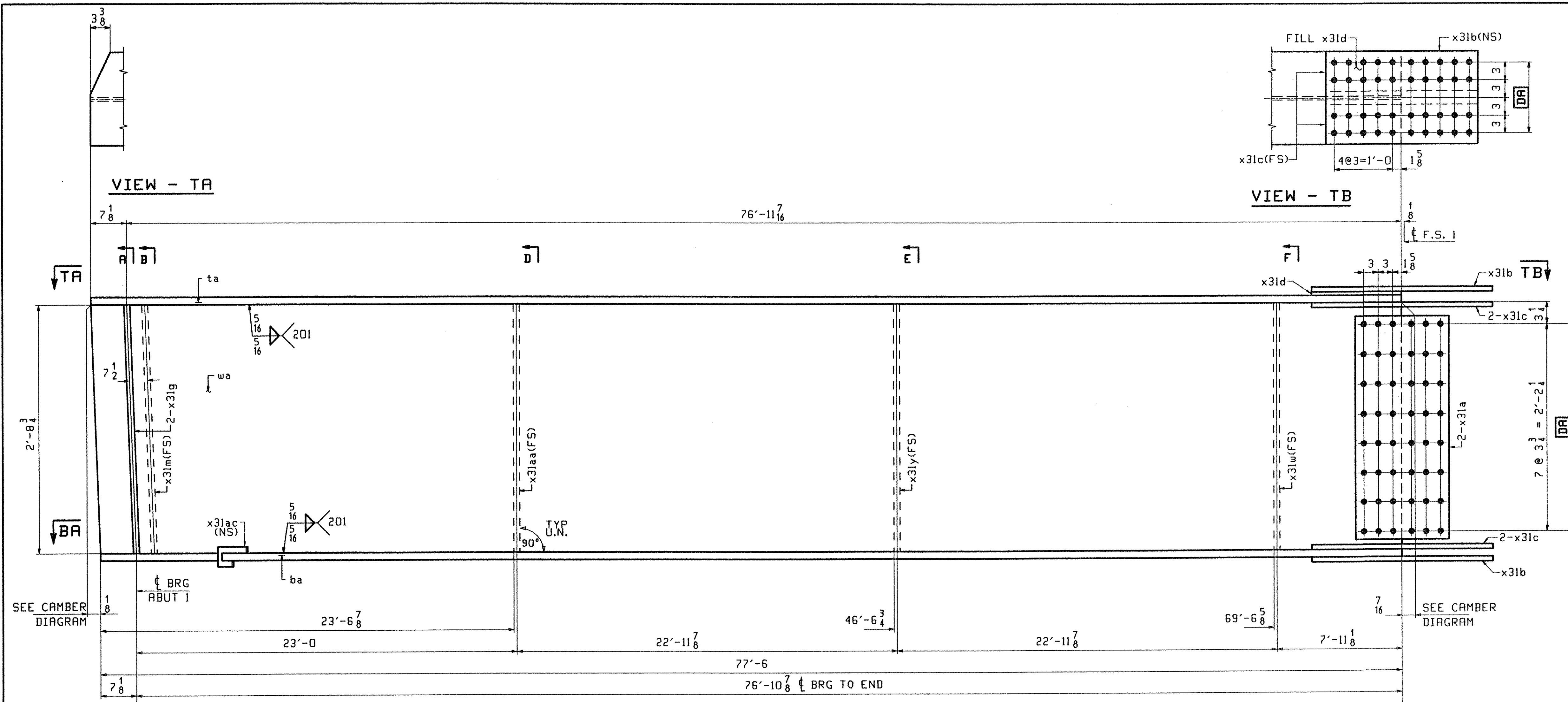


| ABM INFO | | SHIP | | | | BILL OF MATERIAL | | JOB NO. | | DRAWING NO. | | REV. |
|----------|------|------|-----|-------|-------------------------------------|------------------|--------------------|---------------------|----|-------------|--|------|
| PAGE | LINE | MARK | QTY | MARK | MATERIAL | LENGTH FT | INCHES | REMARKS | WT | 305 | | |
| | | G5A | 1 | | GIRDER | | | | | | | |
| 301 | O | | 1 | wa | PL $\frac{1}{2}$ x 36 $\frac{7}{8}$ | 77 | 6 $\frac{3}{8}$ | (M270-50HT2) (H2-3) | | | | |
| 301 | J | | 1 | ta | PL $\frac{5}{8}$ x 16 | 77 | 6 $\frac{3}{8}$ | (M270-50HT2) (H2-3) | | | | |
| 301 | A | | 1 | ba | PL $\frac{5}{8}$ x 16 | 77 | 6 | (M270-50HT2) (H2-3) | | | | |
| 302 | B | | 2 | x31a | PL $\frac{7}{8}$ x 29 $\frac{3}{4}$ | 1 | 7 | (M270-50HT2) (H2-3) | | | | |
| 302 | C | | 2 | x31b | PL $\frac{5}{8}$ x 16 | 2 | 7 | (M270-50HT2) (H2-3) | | | | |
| 302 | D | | 4 | x31c | PL $\frac{5}{8}$ x 7 | 2 | 7 | (M270-50HT2) (H2-3) | | | | |
| 302 | F | | 1 | x31d | PL $\frac{3}{4}$ x 16 | 1 | 3 $\frac{3}{8}$ | FILL | | | | |
| 302 | K | | 2 | x31g | PL $\frac{7}{8}$ x 7 $\frac{3}{4}$ | 2 | 8 $\frac{3}{4}$ | | | | | |
| 302 | K | | 1 | x31m | PL $\frac{7}{8}$ x 7 $\frac{3}{4}$ | 2 | 8 $\frac{3}{4}$ | | | | | |
| 302 | M | | 1 | x31aa | PL $\frac{1}{2}$ x 5 | 2 | 8 $\frac{3}{4}$ | | | | | |
| 302 | M | | 1 | x31y | PL $\frac{1}{2}$ x 5 | 2 | 8 $\frac{3}{4}$ | | | | | |
| 302 | M | | 1 | x31w | PL $\frac{1}{2}$ x 5 | 2 | 8 $\frac{3}{4}$ | | | | | |
| 302 | P | | 1 | x31ac | PL $\frac{5}{8}$ x 3 $\frac{3}{8}$ | 0 | 10 $\frac{15}{16}$ | | | | | |



ONE - GIRDER - G5A

1. FOR GIRDER STANDARD DETAILS SEE DRAWING X31.
2. FOR CAMBER AND FLANGE DIAGRAMS SEE DRAWING C301.
3. FOR HORIZONTAL CURVING DIAGRAM SEE DRAWING HC301.
4. FOR GENERAL NOTES SEE DRAWING GN301.

TVGA
Engineering, Surveying, P.C.

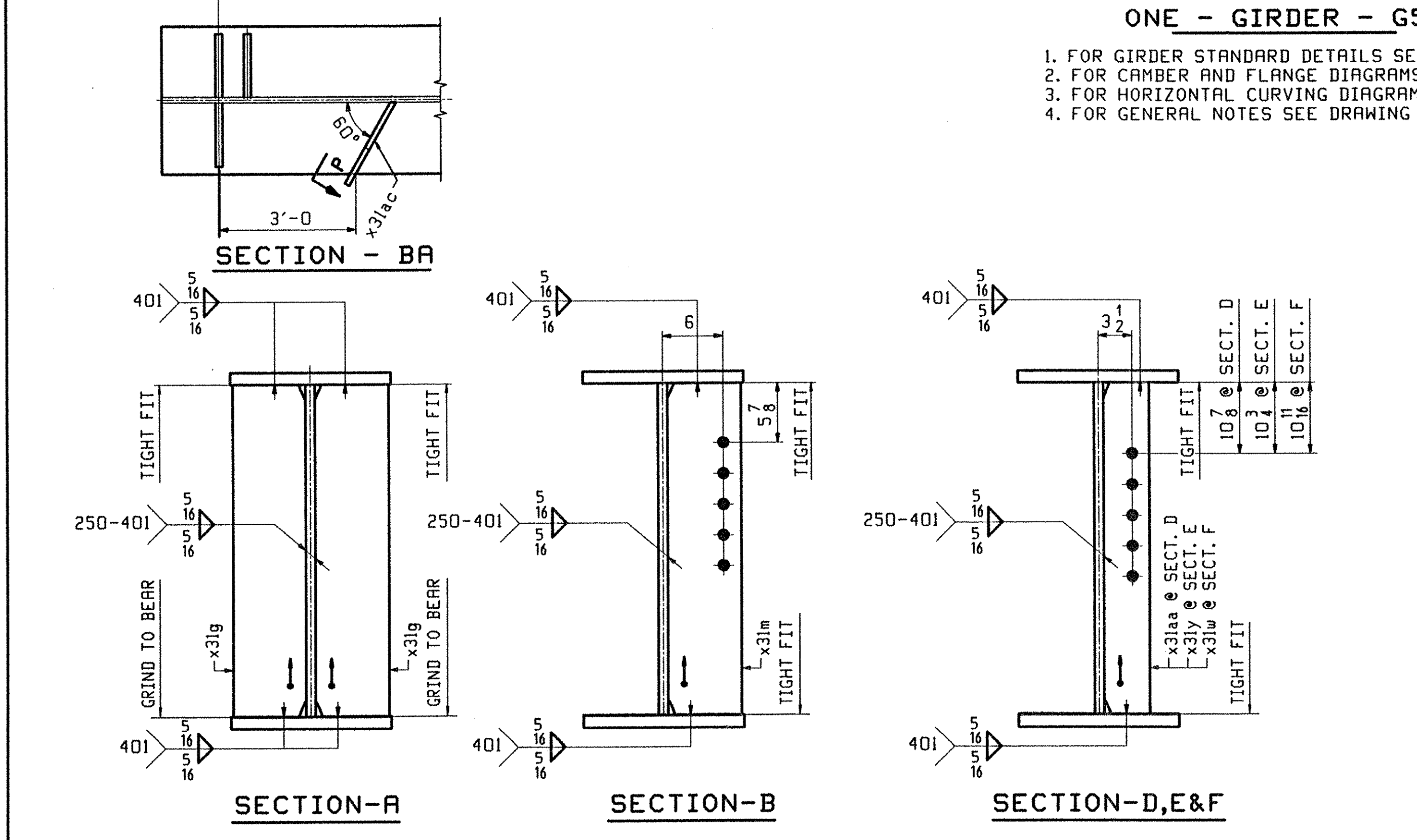
NO EXCEPTIONS TAKEN REJECTED
 FURNISH AS CORRECTED
 REVISE AND RESUBMIT

ENGINEER has reviewed Shop Drawings and Samples and other data which Contractor is required to submit, prior for compliance with the schematic shown in the Contract Documents and compliance with the design concept of the completed Project as a furnishing work as indicated in the Contract Documents. Such review is not intended to mean, methods, techniques, sequence or procedures of construction or to safety procedures and programs incident thereto. Contractor is responsible for dimensions to be equipment and completed at the job site; for submission that pertains safety to the fabrication processes or to techniques of construction; and for coordination of the work of all trades.

BY: PTW/ST
DATE: 4/19/01

| | | | | | | | | | | | | |
|------------------|---------|--|--|--|--|--|--|--|--|--|--|--|
| OUT FOR APPROVAL | 3/13/01 | | | | | | | | | | | |
| OUT FOR APPROVAL | | | | | | | | | | | | |
| ISSUED TO SHOP | | | | | | | | | | | | |
| FIELD & OFFICE | | | | | | | | | | | | |

| REV. | REMARKS | DATE | DWN | CHK | APP | Q.A. | NO. | DIA. | LGT | TYPE | WASHER |
|---|-------------|--------------|-------------|-----|-----|------|-----|------|-----|------------|-------------|
| MATERIAL: | ELECTRODES: | HOLES: | SHOP BOLTS: | | | | | | | | |
| M270 GR 50W | | 15/16 Ø (UN) | 7/8 Ø (UN) | | | | | | | | |
| SURFACE PREP. & PAINT: -STEEL WITHIN 10'-0 OF ABUT 1 SHALL BE PAINTED (SEE GN301) -ALL OTHER STEEL SHALL BE BLAST CLEANED AND LEFT UNPAINTED. | | | | | | | | | | | |
| DESCRIPTION: GIRDER - G5A | | | | | | | | | | DRAWN BY | DATE |
| JOB: BRIDGE NO. 485 | | | | | | | | | | PHG | 02/23/01 |
| I-89 SB OVER LITTLE RIVER | | | | | | | | | | CHKD BY | |
| I-89 IMPROVEMENTS | | | | | | | | | | ELC | 03/6/01 |
| TOWN OF MIDDLESEX-BOLTON, VERMONT | | | | | | | | | | APPROV BY | |
| TENSOR 2107-5 | | | | | | | | | | SUPERVISOR | H. J. GATTI |
| PROJ NO. IM-089-2(26) | | | | | | | | | | Q.A. | |
| CUSTOMER: VERMONT AGENCY OF TRANSPORTATION | | | | | | | | | | JOB NO. | DRG. NO. |
| CASCO BAY STEEL STRUCTURES, INC. | | | | | | | | | | 118-485 | 305 |
| 75 SPRING HILL ROAD SACO, MAINE 04072 | | | | | | | | | | REV. | △ |
| PHONE (207) 282-7360 FAX. (207) 282-1179 | | | | | | | | | | | |



E.C.C. Proj. No. 9 2/24/01 10/10/01 10/10/01 10/10/01