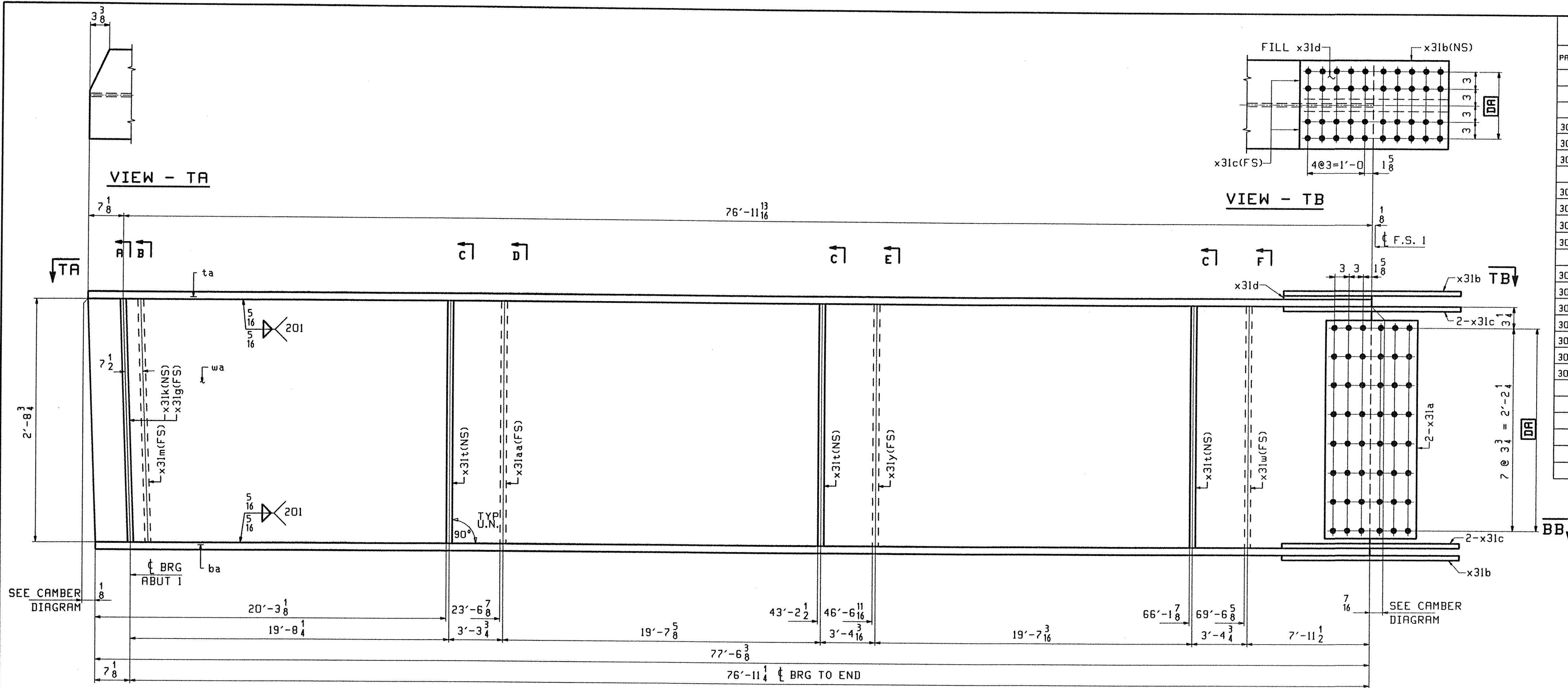
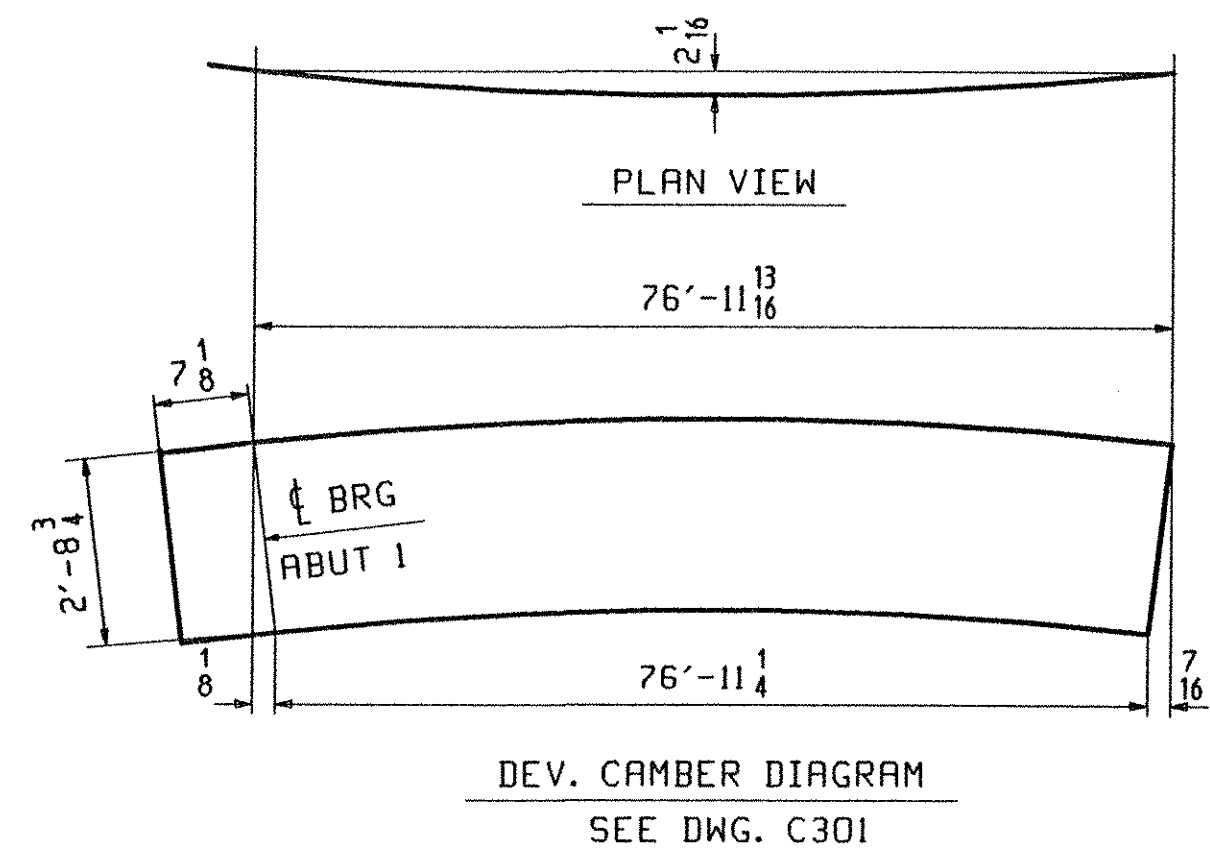
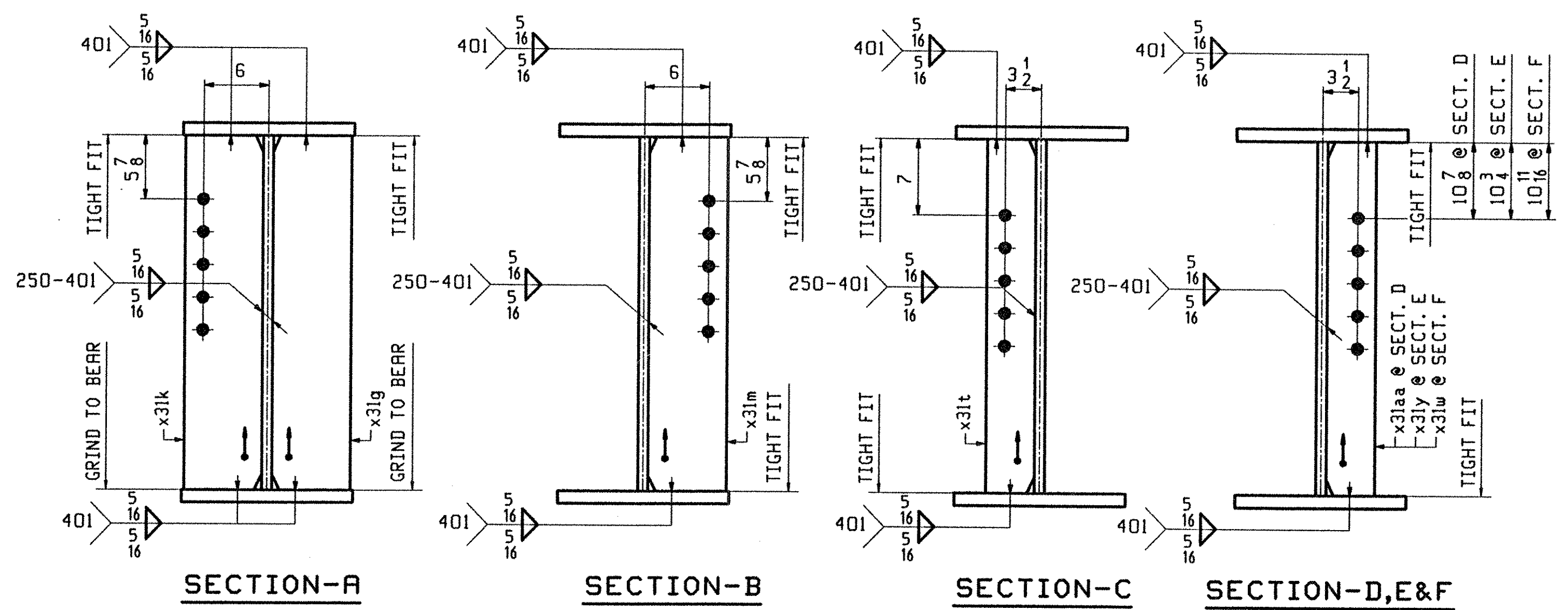
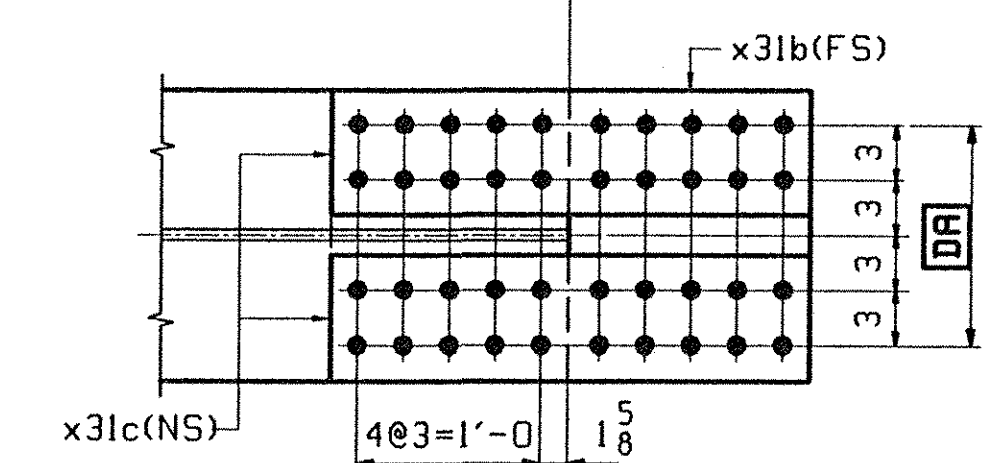


ABM INFO		BILL OF MATERIAL				JOB NO.	DRAWING NO.	REV.	
PAGE	LINE	MARK	QTY	MARK	MATERIAL	LENGTH FT INCHES	REMARKS	WT	PROCUREMENT NOTES
		G4A	1		GIRDER			16243	
301	Q		1	wa	PL $\frac{1}{2}$ x 36 $\frac{1}{2}$	77 $\frac{15}{16}$	(M270-50HT2) (#2-3)		
301	J		1	ta	PL $\frac{5}{8}$ x 16	77 $\frac{15}{16}$	(M270-50HT2) (#2-3)		
301	A		1	ba	PL $\frac{5}{8}$ x 16	77 $\frac{15}{16}$	(M270-50HT2) (#2-3)		
302	B		2	x31a	PL $\frac{1}{2}$ x 29 $\frac{3}{4}$	1 7	(M270-50HT2) (#2-3)		
302	C		2	x31b	PL $\frac{5}{8}$ x 16	2 7	(M270-50HT2) (#2-3)		
302	D		4	x31c	PL $\frac{5}{8}$ x 7	2 7	(M270-50HT2) (#2-3)		
302	F		1	x31d	PL $\frac{1}{2}$ x 16	1 3 $\frac{3}{8}$	FILL		
302	K		1	x31k	PL $\frac{7}{8}$ x 7 $\frac{3}{4}$	2 $\frac{3}{4}$			
302	K		1	x31g	PL $\frac{7}{8}$ x 7 $\frac{3}{4}$	2 $\frac{3}{4}$			
302	K		1	x31m	PL $\frac{7}{8}$ x 7 $\frac{3}{4}$	2 $\frac{3}{4}$			
302	M		3	x31t	PL $\frac{1}{2}$ x 5	2 $\frac{3}{4}$			
302	M		1	x31aa	PL $\frac{1}{2}$ x 5	2 $\frac{3}{4}$			
302	M		1	x31y	PL $\frac{1}{2}$ x 5	2 $\frac{3}{4}$			
302	M		1	x31w	PL $\frac{1}{2}$ x 5	2 $\frac{3}{4}$			



**ONE - GIRDER - G4A**

1. FOR GIRDER STANDARD DETAILS SEE DRAWING X31.
2. FOR CAMBER AND FLANGE DIAGRAMS SEE DRAWING C301.
3. FOR HORIZONTAL CURVING DIAGRAM SEE DRAWING HC301.
4. FOR GENERAL NOTES SEE DRAWING GN301.



TVGA  
Engineering, Surveying, P.C.

NO EXCEPTIONS TAKEN  REJECTED  
 REVISE AND RESUBMIT  
 FURNISH AS CORRECTED

ENGINEER has reviewed Shop Drawings and General and other data which Contractor is required to submit, solely for performance and compliance with the design concept of the Contract Documents and is not responsible for the design of the Contractor's work as indicated in the Contract Documents. Such review shall extend to means, methods, techniques, sequences or procedures of construction or to safety precautions and programs insofar as they affect the Contractor's work. Contractor is responsible for information that pertains solely to the fabrication processes or to techniques of construction, and for coordination of the work of all trades.

BY: Pat W. S.T.  
DATE: 7/19/01

OUT FOR APPROVAL	3/13-01											
OUT FOR APPROVAL												
ISSUED TO SHOP												
FIELD & OFFICE												
REV.	REMARKS	DATE	DWN	CHK	APP	O.A.	NO.	DIA.	LGT	TYPE	WASHER	
	MATERIAL: M270 GR 50W											
	ELECTRODES:											
	HOLES:											
	SHOP BOLTS:											
	15/16 $\phi$ (UN)											
	7/8 $\phi$ (UN)											
SURFACE PREP. & PAINT: -STEEL WITHIN 10'-0" OF ABUT 1 SHALL BE PAINTED (SEE GN301) -ALL OTHER STEEL SHALL BE BLAST CLEANED AND LEFT UNPAINTED.												
DESCRIPTION: GIRDER - G4A										DRAWN BY		DATE
JOB: BRIDGE NO. 485										PHG		02/23/01
I-89 SB OVER LITTLE RIVER										CHKD BY		
I-89 IMPROVEMENTS										ELC		03/06/01
TOWN OF MIDDLESEX-BOLTON, VERMONT										APPROV BY		
SUPERVISOR										H. J. GATTI		
PROJ NO. IM-089-2(26)										Q.A.		
CUSTOMER: VERMONT AGENCY OF TRANSPORTATION												
<b>CASCO BAY STEEL STRUCTURES, INC.</b>										JOB NO.		DRG. NO.
75 SPRING HILL ROAD										118-48S		304
PHONE (207) 282-7360										FAX. (207) 282-1179		REV. $\Delta$