

**CALCULATION PLAN**

Line	DEVELOPED LENGTHS ALONG BTM OF WEB				GRADE	
	LEN A	LEN BL	LEN B	LEN C	ABUT 1	PIER 1
1	77'-0 11/16	21'-6	52'-6 1/8	37'-5 15/16	.0103	.0052
2	77'-0 1/4	21'-6 1/16	52'-6 3/16	37'-5 7/16	.0101	.0053
3	76'-11 13/16	21'-6 1/16	52'-6 3/16	37'-5	.0101	.0053
4	76'-11 3/8	21'-6 1/16	52'-6 3/16	37'-4 1/2	.0101	.0053
5	76'-11	21'-6 1/16	52'-6 3/16	37'-4	.0104	.0052

TVGA  
Engineering, Surveying, P.C.

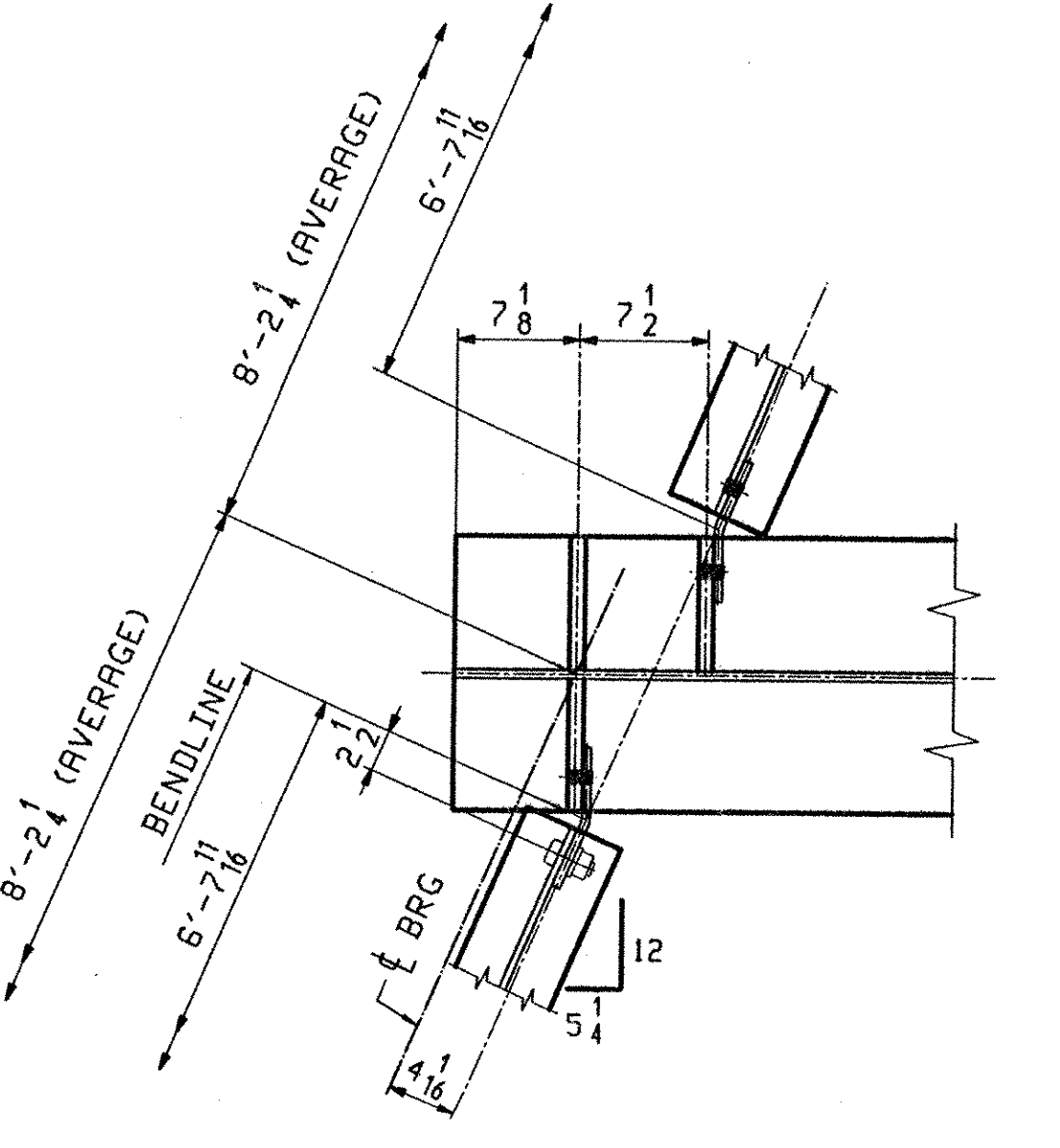
NO EXCEPTIONS TAKEN  REJECTED  
 FURNISH AS CORRECTED  
 REVISE AND RESUBMIT

ENGINEER has reviewed Shop Drawings and Samples and other data which Contractor is required to submit, and for compliance with the information given in the Contract Documents and compliance with the design concept of the completed Project as a functioning whole as indicated in the Contract Documents. Such review is limited to means, methods, techniques, sequences or procedures of construction or to safety precautions and programs incident thereto. Contractor is responsible for dimensions to be furnished and completed at the job site, for information that pertains solely to the fabrication processes or to techniques of construction and for coordination of the work of all trades.

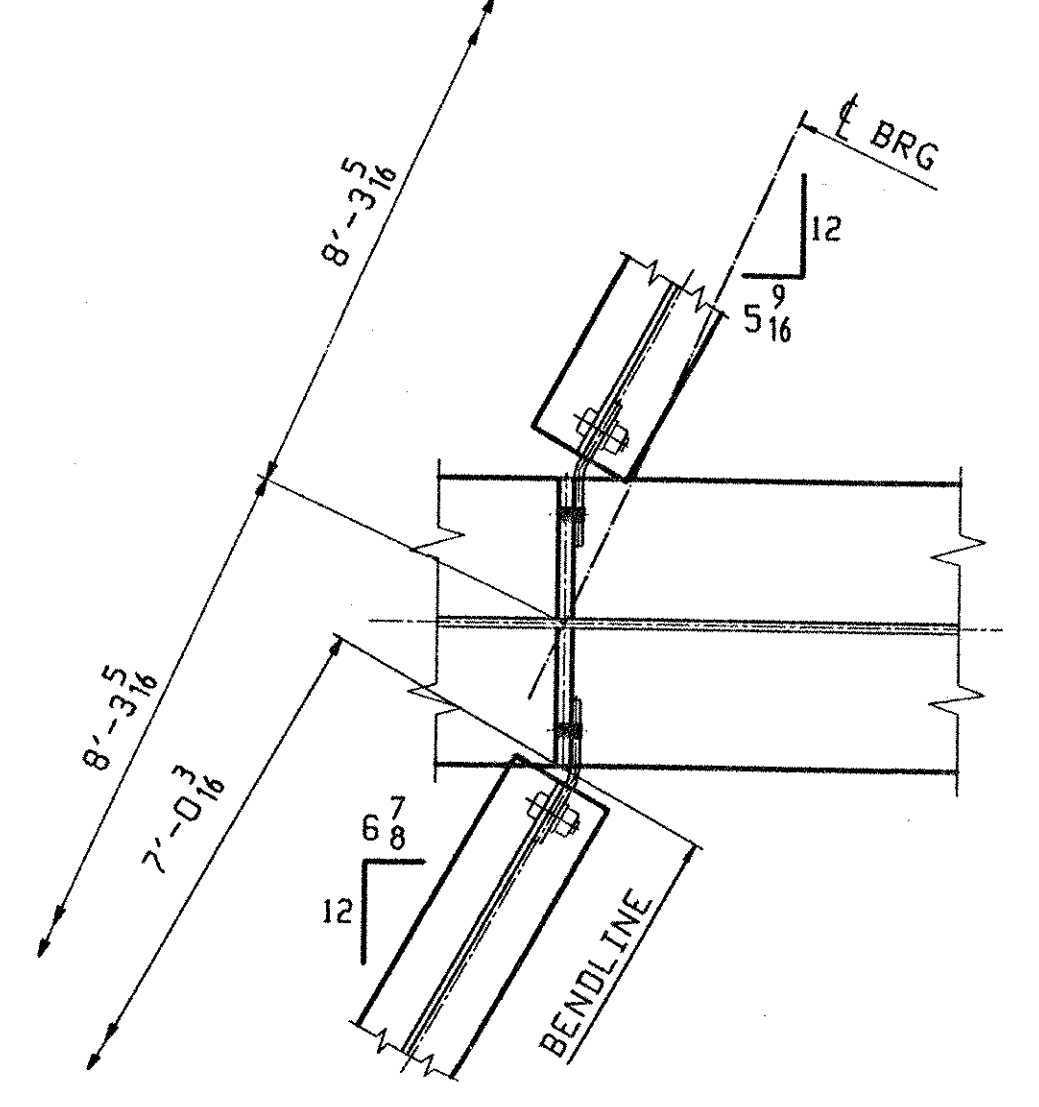
BY: *P.W. 20*  
DATE: 4/9/01

**\*\* NOTE \*\***  
 THE PURPOSE OF THIS DRAWING IS TO COORDINATE GEOMETRIC CONTROL INFORMATION. THIS DWG IS SUBMITTED FOR INFORMATION ONLY AND IS NOT INTENDED FOR SHOP FABRICATION.

- NOTES
1. LONGITUDINAL DIMENSIONS ARE SLOPING ALONG BOTTOM OF WEB WITH CORRECTIONS MADE FOR VERTICAL CURVE, GRADE & DL CAMBER (UN).
  2. TRANSVERSE DIMENSIONS ARE IN A HORIZ. PLANE (UN).
  3. ARROW POINTS TOWARDS LOW END OF MEMBER.
  4. ENDS OF STRINGERS AND BRG. STIFF'S ARE VERTICAL AFTER DL ROTATION.
  5. DIAPH STIFF & FIELD SPLICES ARE NORMAL TO GRADE.
  6. BOTT PT NUMBERS = TOP PT NUMBERS + 200.
  7. FOR LAYOUTS SEE DWG T0301.
  8. COMBINE CROSSFRAMES FOR DIFF IN DROPS OF +/- 3/16.
  9. CROSSFRAMES DROPS ARE CALCULATED IN THEIR FINAL POSITION.
  10. WP'S AT  $\frac{1}{2}$  OF BENT PLATE.



DIAPHRAGM WORKPOINTS @ ABUT 1



DIAPHRAGM WORKPOINTS @ PIER 1

OUT FOR APPROVAL	3-13-01										
OUT FOR APPROVAL											
ISSUED TO SHOP											
FIELD & OFFICE											
REV.	REMARKS	DATE	DWN	CHK	APP	O.A.	NO.	DIA.	LGT	TYPE	WASHER
MATERIAL:	M270 GR 50W	ELECTRODES:						HOLES:	15/16 Ø (UN)	SHOP BOLTS:	7/8 Ø (UN)
SURFACE PREP. & PAINT: -STEEL WITHIN 10'-0 OF ABUT 1 SHALL BE PAINTED (SEE GN301) -ALL OTHER STEEL SHALL BE BLAST CLEANED AND LEFT UNPAINTED.											
DESCRIPTION:	CALCULATION PLAN								DRAWN BY	DATE	
JOB:	BRIDGE NO. 485 I-89 SB OVER LITTLE RIVER I-89 IMPROVEMENTS TOWN OF MIDDLESEX-BOLTON, VERMONT								CHKD BY		
									JAK	02/22	
									APPROV BY		
									SUPERVISOR	W. J. GATTI	
PROJ NO.	IM-089-2(26)								O.A.		
CUSTOMER: VERMONT AGENCY OF TRANSPORTATION											
<b>CASCO BAY STEEL STRUCTURES, INC.</b>											
75 SPRING HILL ROAD				SACO, MAINE 04072				JOB NO.		DRG. NO.	
PHONE (207) 282-7360				FAX (207) 282-1179				118-485		WS301	
										REV.	△