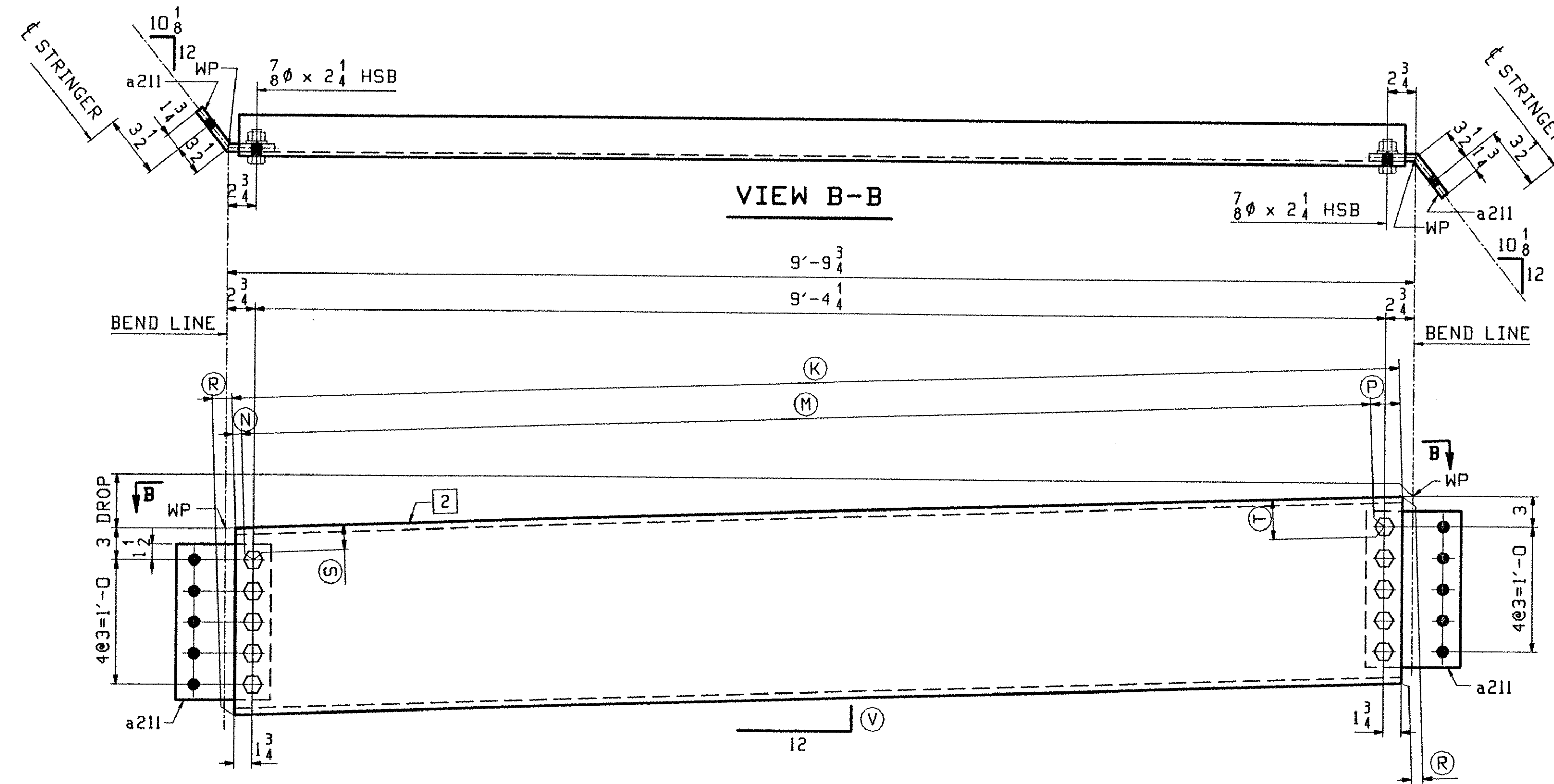


BRG DIAPHRAGMS - PIER 1

MARK	REQ'D	DROP	(A)	(B)	(C)	(D)	(E)	(F)	(G)	(H)	(I)
211D1	2	4 5/8	9'-8 1/4	9'-4 3/4	1 5/8	1 7/8	1 11/16	3 1/8	2 7/8	1 1/2	b211
211D2	2	7/8	9'-8 3/16	9'-4 11/16	1 3/4	1 3/4	1 1/8	3	3	1 1/16	c211



BRG DIAPHRAGMS - PIER 2

MARK	REQ'D	DROP	(K)	(M)	(N)	(P)	(R)	(S)	(T)	(V)	(2)
211D3	2	4 9/16	9'-7 13/16	9'-4 5/16	1 5/8	1 7/8	1 11/16	3 1/8	2 7/8	7 1/16	d211
211D4	2	11/16	9'-7 3/4	9'-4 1/4	1 3/4	1 3/4	1 1/8	3	3	1 1/16	f211

TVGA
Engineering, Surveying, P.C.

NO EXCEPTIONS TAKEN REJECTED
 FURNISH AS CORRECTED
 REVISE AND RESUBMIT

ENGINEER has reviewed Shop Drawings and Samples and other data which Contractor is required to furnish, only for conformance with the information shown on the Contract Documents and compatibility with the design concept of the completed Project as a functioning whole as indicated in the Contract Documents. Such review does not extend to methods, techniques, sequences, or procedures of construction or to safety procedures and programs incident thereto. Contractor is responsible for arrangements to be confirmed and executed at the job site for the safety of construction, and for coordination of the work of all trades.

BY: *[Signature]*
DATE: 11-06-2001

PAGE	LINE	MARK	QTY	MARK	MATERIAL	LENGTH		REMARKS	WT	PROCUREMENT NOTES
						FT	INCHES			
		211D1	2		BRG DIAPHRAGMS				462	
203	D	2	b211		MC 18x42.7	9	8 15/16			
203	E	4	a211		PL 2x15	0	9 7/8	BENT		
204	C	20			7/8 HSB	0	2 1/4	(A325-3)		
204	H	20			7/8 HSW	0	2 1/4	(F436W)		
		211D2	2		BRG DIAPHRAGMS				459	
203	D	2	c211		MC 18x42.7	9	8 5/16			
203	E	4	a211		PL 2x15	0	9 7/8	BENT		
204	C	20			7/8 HSB	0	2 1/4	(A325-3)		
204	H	20			7/8 HSW	0	2 1/4	(F436W)		
		211D3	2		BRG DIAPHRAGMS				460	
203	D	2	d211		MC 18x42.7	9	8 1/2			
203	E	4	a211		PL 2x15	0	9 5/8	BENT		
204	C	20			7/8 HSB	0	2 1/4	(A325-3)		
204	H	20			7/8 HSW	0	2 1/4	(F436W)		
		211D4	2		BRG DIAPHRAGMS				458	
203	D	2	f211		MC 18x42.7	9	7 7/8			
203	E	4	a211		PL 2x15	0	9 3/4	BENT		
204	C	20			7/8 HSB	0	2 1/4	(A325-3)		
204	H	20			7/8 HSW	0	2 1/4	(F436W)		

NOTE:
BEND LINES & WP'S ARE @ 1/2 OF BENT R'S.

OUT FOR APPROVAL	3-5-01									
OUT FOR APPROVAL										
ISSUED TO SHOP										
FIELD & OFFICE										

REV.	REMARKS	DATE	DWN	CHK	APP	Q.A.	NO.	DIA.	LGT	TYPE	WASHER
	MATERIAL:										
	M270 GR 50W										
	ELECTRODES:										
	HOLES:										
	15/16 Ø (UN)										
	SHOP BOLTS:										
	7/8 Ø (UN)										

SURFACE PREP. & PAINT:
-STEEL WITHIN 10'-0 OF ABUT 2 SHALL BE PRINTED (SEE GNI)
-ALL OTHER STEEL SHALL BE BLAST CLEANED AND LEFT UNPAINTED.

DESCRIPTION:	BRG. DIAPHRAGMS	DRAWN BY	DATE
JOB:	BRIDGE NO. 43N	PHG	02/14
	I-89 SB OVER U.S. ROUTE 2	CHKD BY	
	I-89 IMPROVEMENTS	TRM	02/21
	TOWN OF MIDDLESEX-BOLTON, VERMONT	APPROV BY	
	TENSOR 2106-N	SUPERVISOR	M. J. GATTI
PROJ NO.	IM-089-2(26)	Q.A.	

CUSTOMER: VERMONT AGENCY OF TRANSPORTATION		JOB NO.	DRG. NO.
CASCO BAY STEEL STRUCTURES, INC.		117-43N	211
75 SPRING HILL ROAD SACO, MAINE 04072			
PHONE (207) 282-7360 FAX. (207) 282-1179			REV. <input type="checkbox"/>