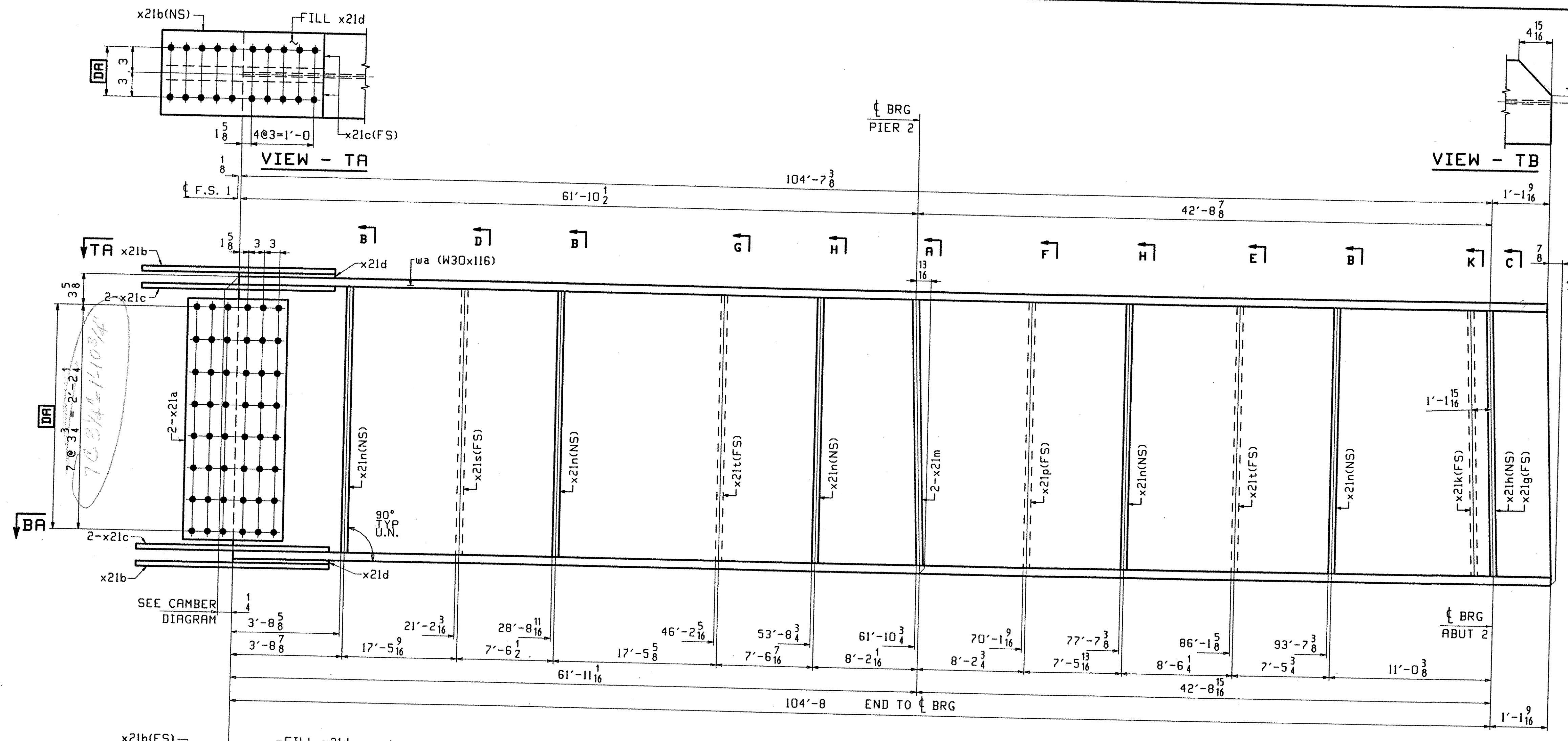
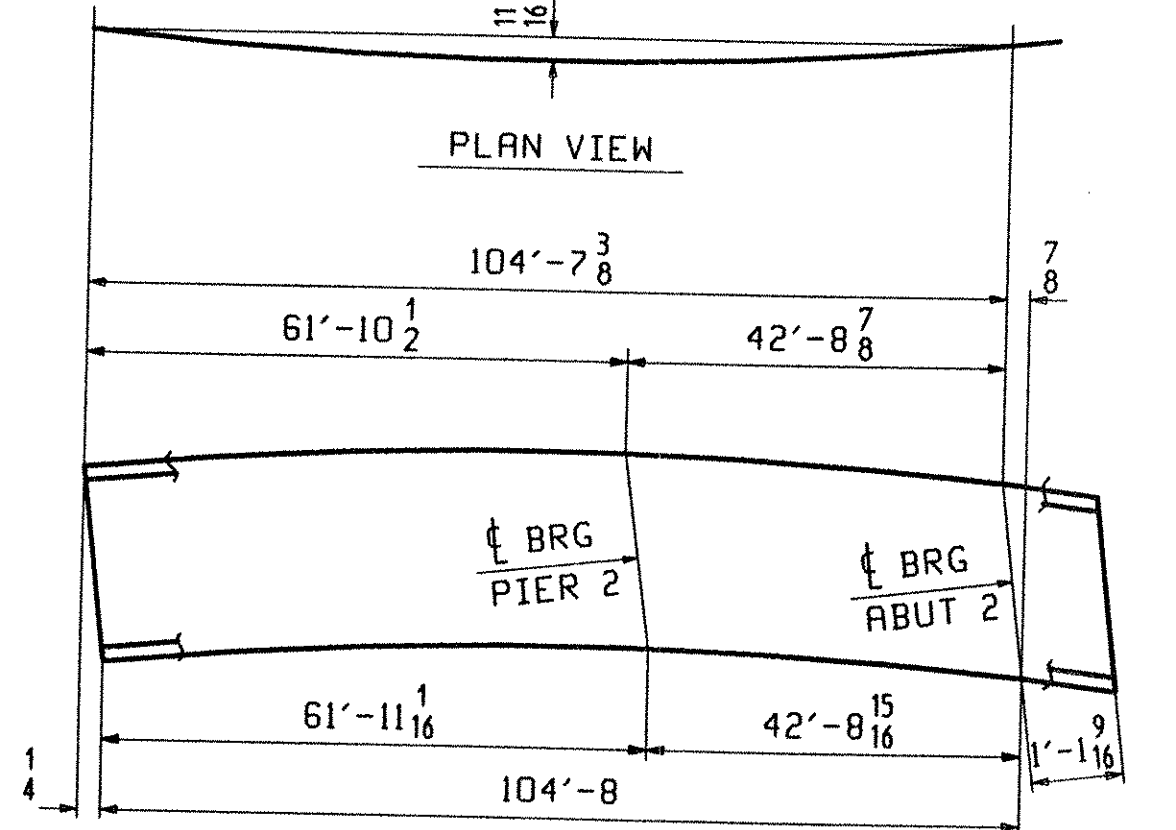


P&G Inc. Feb 27 09:03:52 EST 2001 / www.p&g.com/2105-W-207 / Rev 0



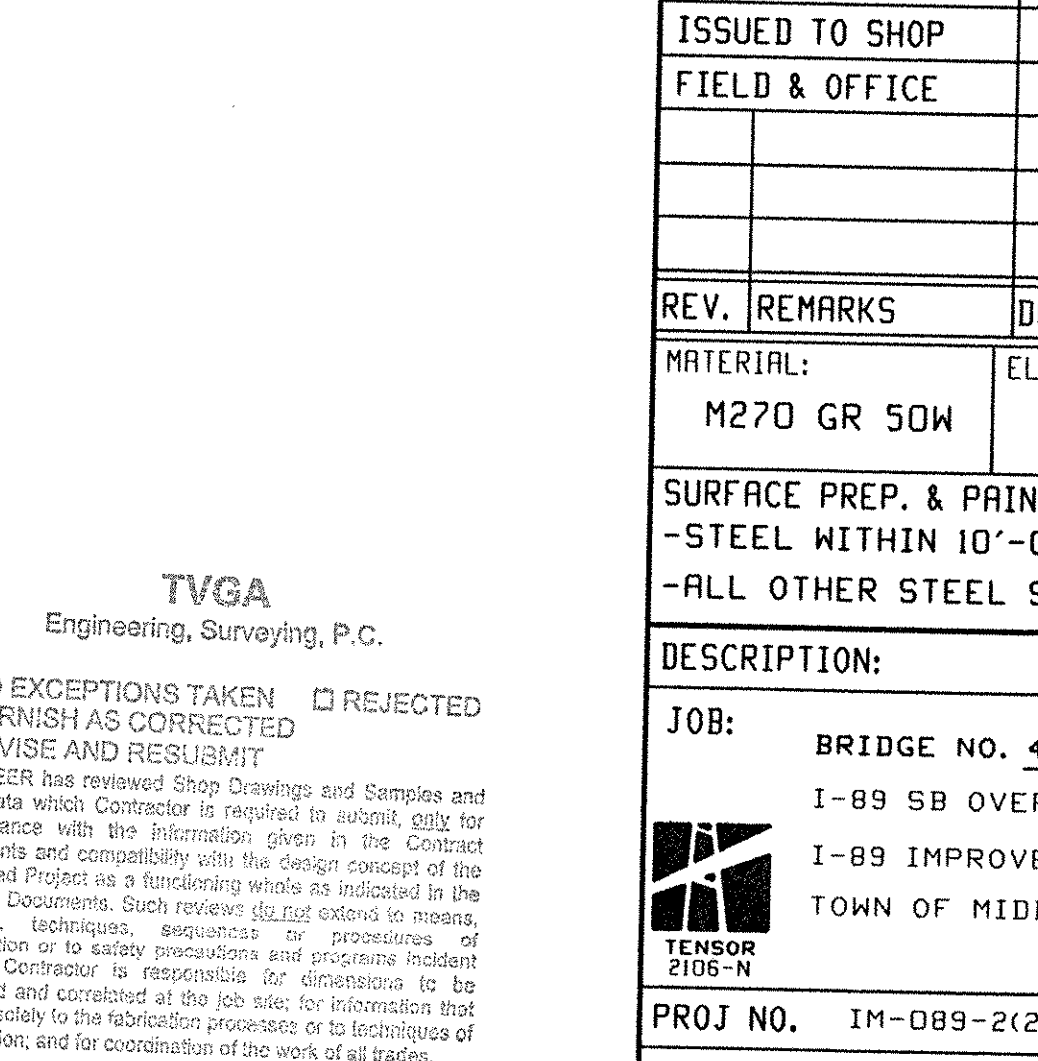
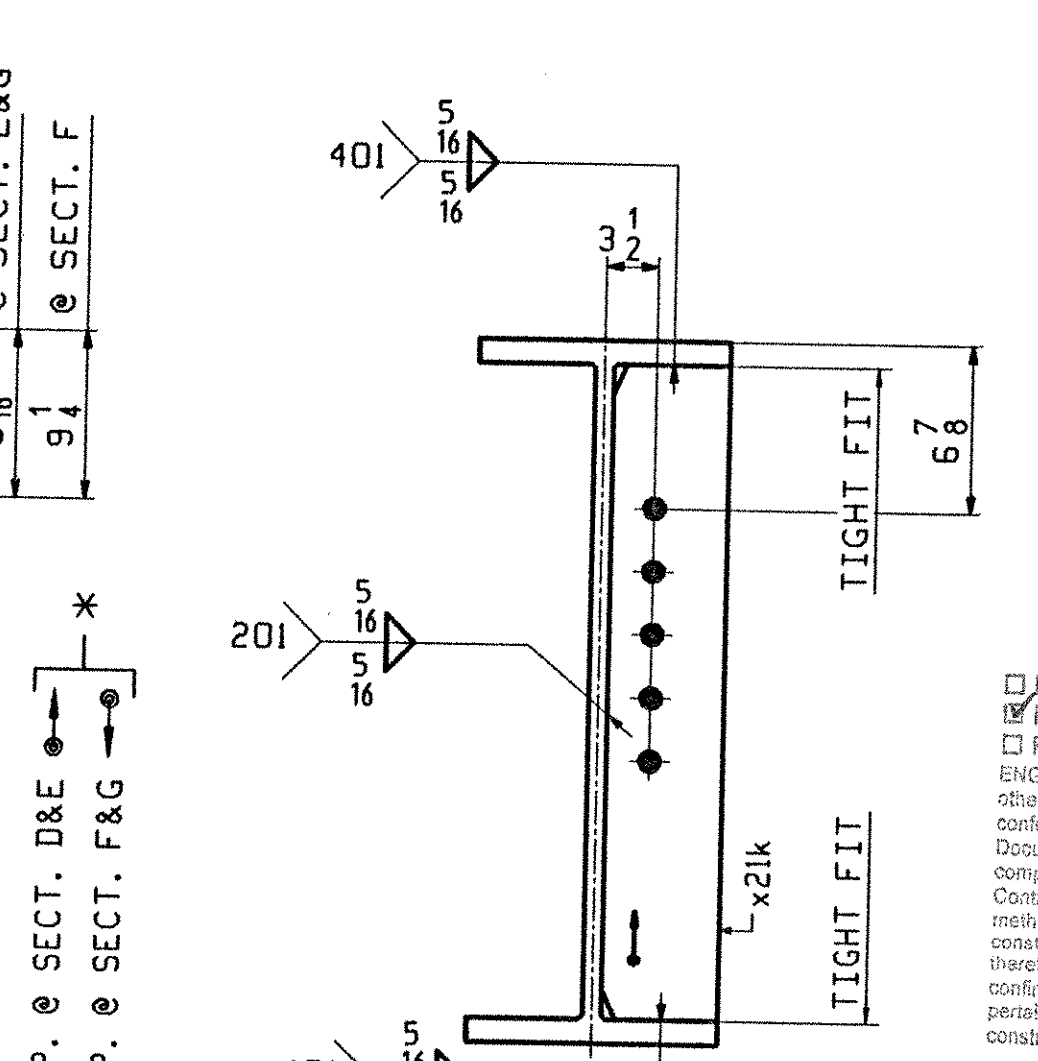
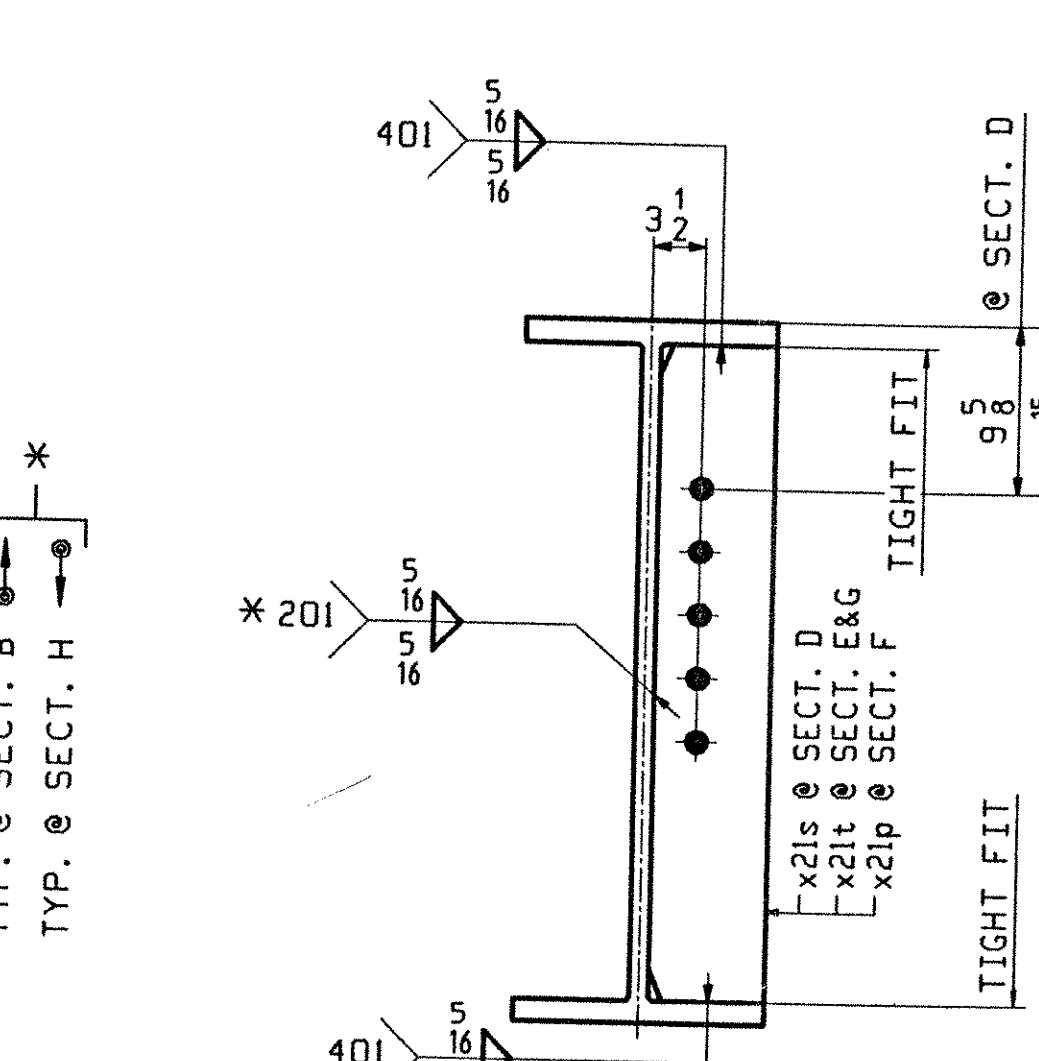
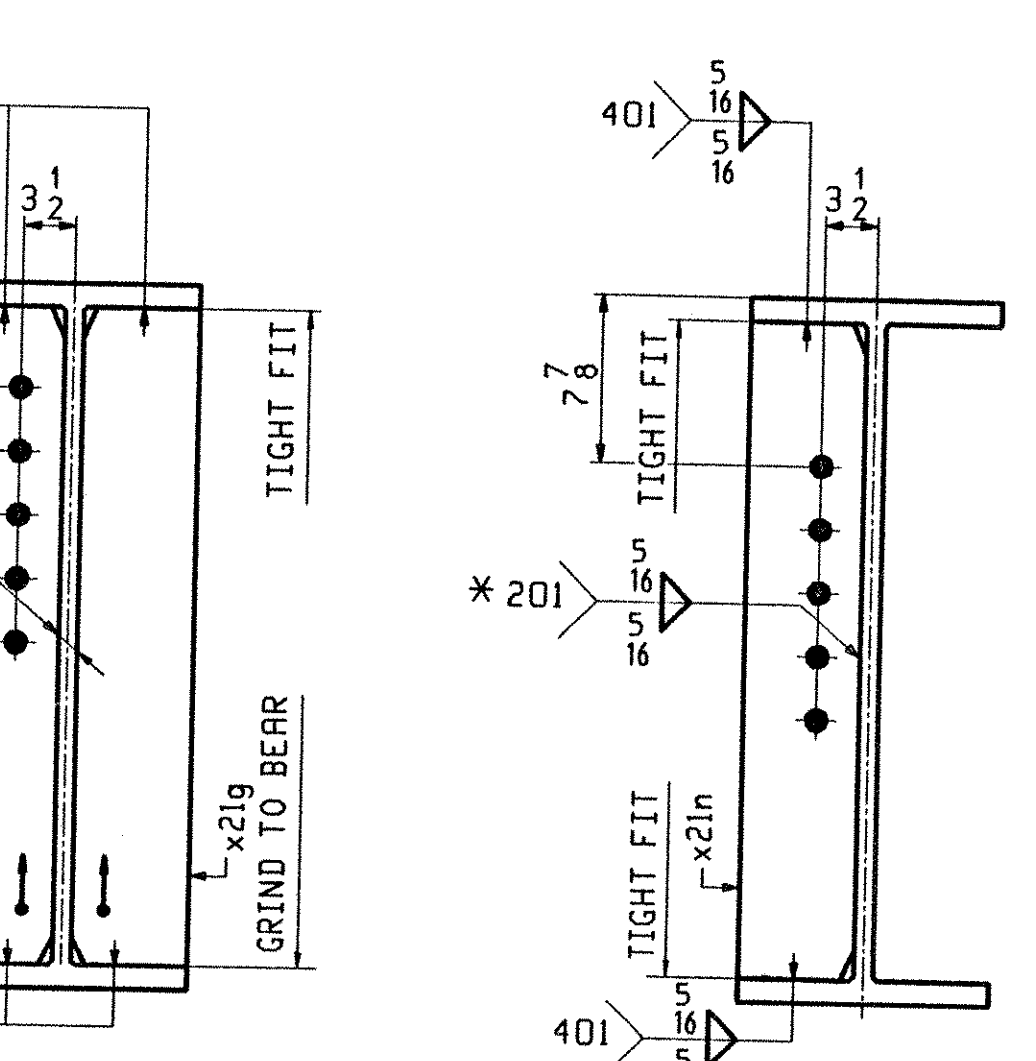
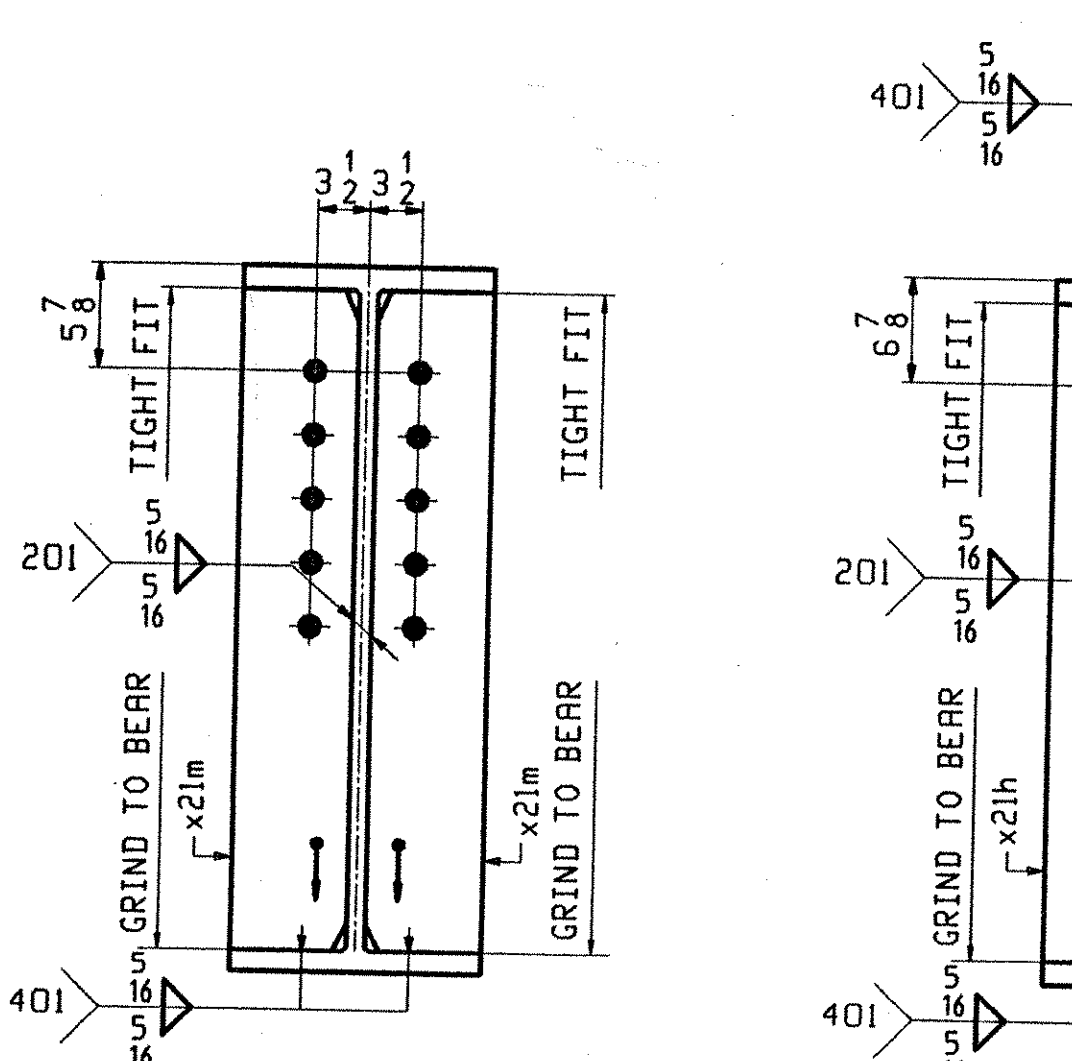
BILL OF MATERIAL				JOB NO.	DRAWING NO.	REV.	
RBH INFO	SHIP	MARK	MATERIAL	LENGTH	REMARKS	HT	PROCUREMENT NOTES
PAGE	LINE	MARK	QTY	FT	INCHES		
		S2B	1		STRINGER		12972
201	C		1 wa	W 30x116	105 9 <sup>13</sup> / <sub>16</sub>		(M270-50HT2) (H2-3)
202	B		2 x21a	PL 1/2 x26 1/4	1 7		(M270-50HT2) (H2-3)
202	C		2 x21b	PL 5/8 x10 1/2	2 7		(M270-50HT2) (H2-3)
202	D		4 x21c	PL 3/4 x4	2 7		(M270-50HT2) (H2-3)
202	F		2 x21d	PL 5/16 x10 1/2	1 3 3/8		FILL
202	M		5 x21n	PL 1/2 x5	2 4 5/16		
202	M		1 x21s	PL 1/2 x5	2 4 5/16		
202	M		2 x21t	PL 1/2 x5	2 4 5/16		
202	M		1 x21p	PL 1/2 x5	2 4 5/16		
202	K		1 x21h	PL 3/8 x5	2 4 5/16		
202	K		1 x21g	PL 3/8 x5	2 4 5/16		
202	K		1 x21k	PL 3/8 x5	2 4 5/16		
202	K		2 x21m	PL 3/8 x5	2 4 5/16		



**ONE - STRINGER - S2B**

1. FOR STRINGER STANDARD DETAILS SEE DRAWING X21.
2. FOR CAMBER AND FLANGE DIAGRAMS SEE DRAWING C202.
3. FOR GENERAL NOTES SEE DRAWING GNI.

**SECTION - BA**



**TVGA**  
 Engineering, Surveying, P.C.  
 NO EXCEPTIONS TAKEN  REJECTED  
 FURNISH AS CORRECTED  
 REVISE AND RESUBMIT  
 ENGINEER has reviewed Shop Drawings and Samples and other data which Contractor is required to submit only for conformance with the information given in the Contract Documents and compatibility with the design concept of the Contract Documents. Such review is not intended to ensure, construction or to satisfy provisions and programs incident thereto. Contractor is responsible for dimensions to be confirmed and controlled at the job site; for information that bearing solely on the fabrication processes or to techniques of construction; and for coordination of the work of all trades.  
 BY: *[Signature]*  
 DATE: 11-08-2001

OUT FOR APPROVAL	3-5-0									
ISSUED TO SHOP										
FIELD & OFFICE										
REV. REMARKS	DATE	DWN	CHK	APP	Q.A.	NO.	DIA.	LGT	TYPE	WASHER
MATERIAL:	M270 GR 50W									
ELECTRODES:										
HOLES:	15/16 Ø (UN)									
SHOP BOLTS:	7/8 Ø (UN)									
SURFACE PREP. & PAINT: -STEEL WITHIN 10'-0" OF ABUT 2 SHALL BE PAINTED (SEE GNI) -ALL OTHER STEEL SHALL BE BLAST CLEANED AND LEFT UNPAINTED.										
DESCRIPTION:	STRINGER - S2B				DRAWN BY	DATE				
JOB:	BRIDGE NO. 43N I-89 SB OVER U.S. ROUTE 2 I-89 IMPROVEMENTS TOWN OF MIDDLESEX-BOLTON, VERMONT				PHG	02/10				
					CHKD BY	02/21				
					APPROV BY					
					SUPERVISOR	H. J. GATTI				
PROJ NO.	IM-089-2(26)				Q.A.					
CUSTOMER:	VERMONT AGENCY OF TRANSPORTATION				JOB NO.	DRG. NO.				
					117-43N	207				
<b>CASCO BAY STEEL STRUCTURES, INC.</b>					REV.	△				
75 SPRING HILL ROAD					SACO, MAINE 04072					
PHONE (207) 282-7360					FAX. (207) 282-1179					