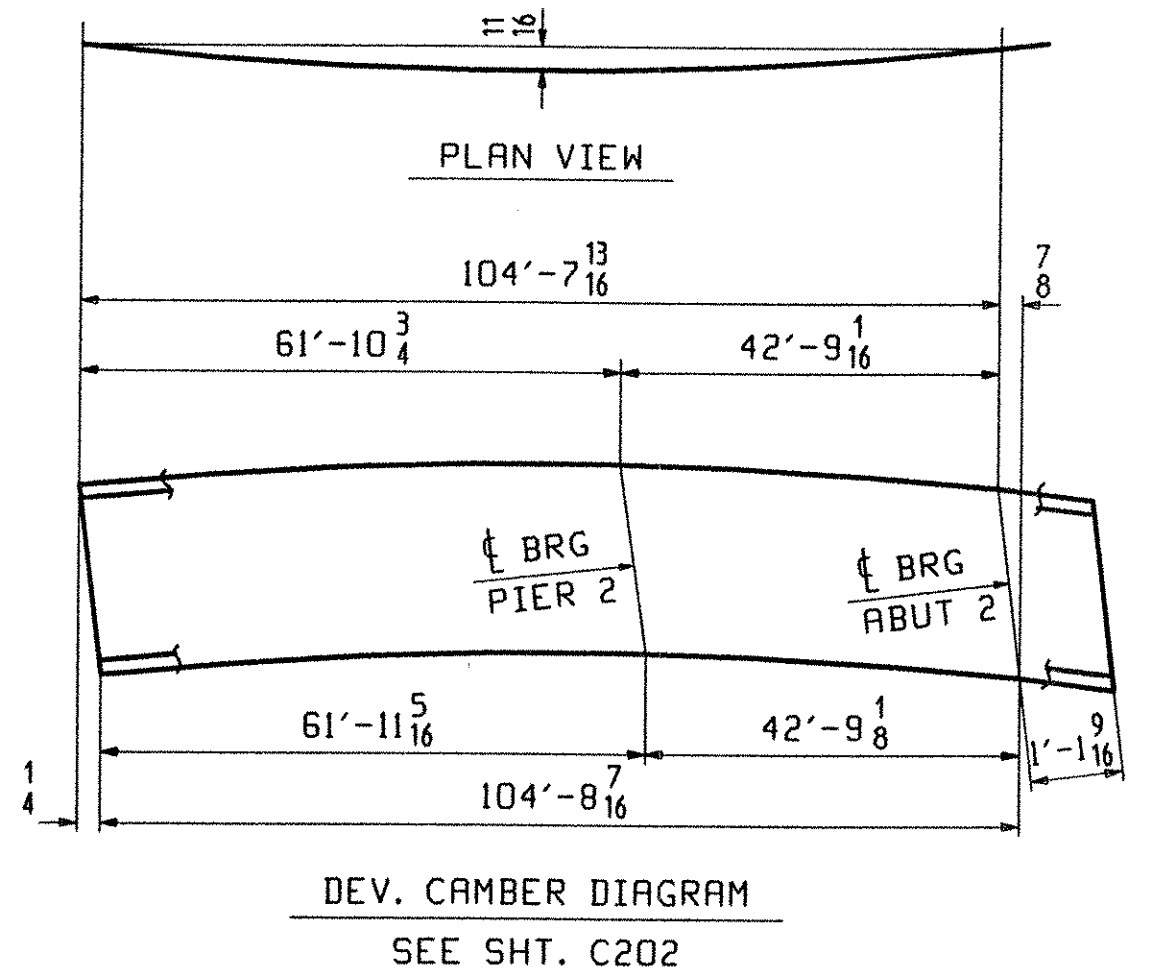
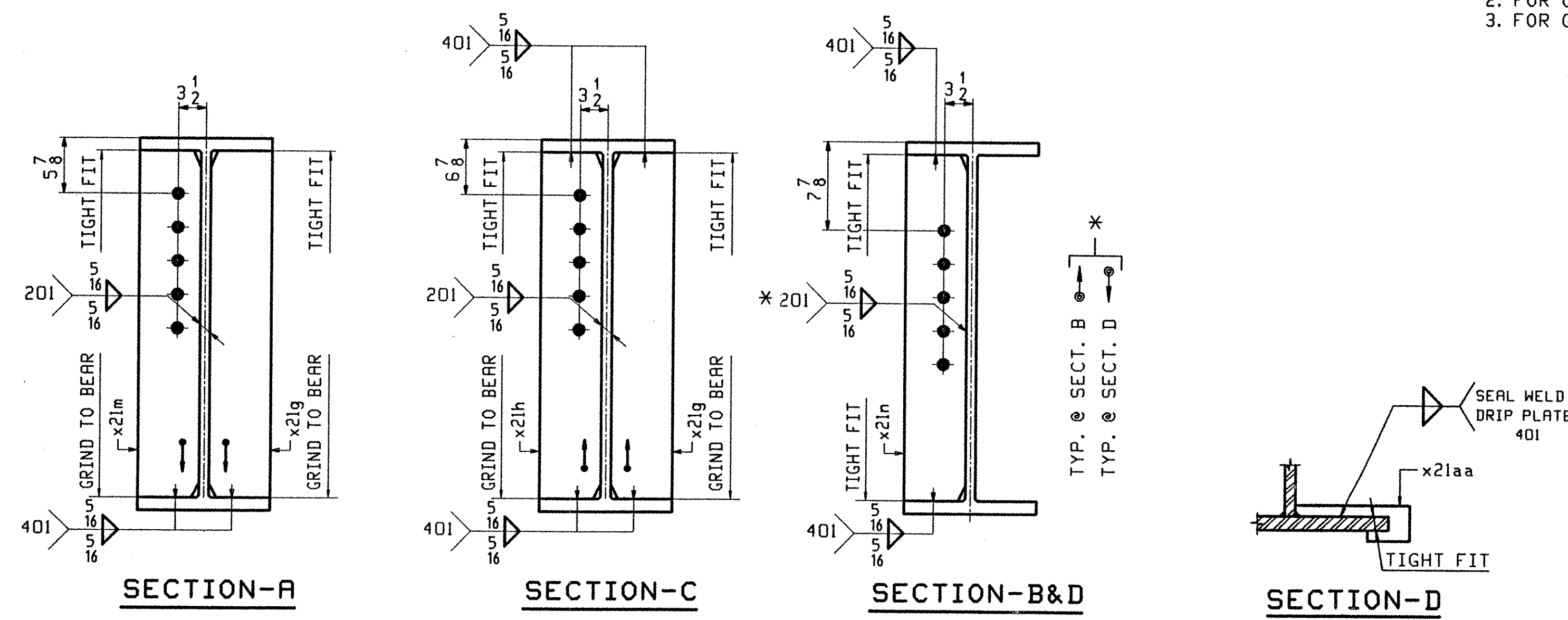


BILL OF MATERIAL						JOB NO.	DRAWING NO.	REV.	
ABM INFO	SHIP	MARK	QTY	MARK	MATERIAL	LENGTH	REMARKS	WT	PROCUREMENT NOTES
PAGE	LINE					FT			
						INCHES			
		SIB	1		STRINGER				12874
201	C		1	wa	W 30x116	105	(M270-SQHT2) (H2-3)		
202	B		2	x21a	PL 1/2x26 1/4	1	(M270-SQHT2) (H2-3)		
202	C		2	x21b	PL 5/8x10 1/2	2	(M270-SQHT2) (H2-3)		
202	D		4	x21c	PL 3/4x4	2	(M270-SQHT2) (H2-3)		
202	F		2	x21d	PL 5/16x10 1/2	1	FILL		
202	H		5	x21n	PL 1/2x5	2			
202	K		1	x21m	PL 5/8x5	2			
202	K		2	x21g	PL 5/8x5	2			
202	K		1	x21h	PL 5/8x5	2			
202	P		2	x21aa	PL 1/4x2 7/8	0			



- ONE - STRINGER - SIB
1. FOR STRINGER STANDARD DETAILS SEE DRAWING X21.
 2. FOR CAMBER AND FLANGE DIAGRAMS SEE DRAWING C202.
 3. FOR GENERAL NOTES SEE DRAWING GNI.



TVGA
Engineering, Surveying, P.C.

NO EXCEPTIONS TAKEN REJECTED
 FURNISH AS CORRECTED
 REVISE AND RESUBMIT

ENGINEER has reviewed Shop Drawings and Samples and confirms that the information given in the Contract Documents and compliance with the drawings thereof of the completed Project as a condition of the contract. Such review does not constitute an endorsement or a safety procedure or to safety procedure of the Contractor. Customer is responsible for dimensions to be confirmed and complete at the job site for information that pertains safety to the laborer processes or to techniques of construction; and for compliance of the work of all trades.

BY: *[Signature]*
DATE: 11-06-2000

OUT FOR APPROVAL	3-5-01										
OUT FOR APPROVAL											
ISSUED TO SHOP											
FIELD & OFFICE											
REV.	REMARKS	DATE	DWN	CHK	APP	Q.A.	NO.	DIA.	LGT	TYPE	WASHER
	MATERIAL:										
	M270 GR SOW										
	ELECTRODES:										
	HOLES:										
	15/16 Ø (UN)										
	SHOP BOLTS:										
	7/8 Ø (UN)										
SURFACE PREP. & PAINT: -STEEL WITHIN 10'-0 OF ABUT 2 SHALL BE PAINTED (SEE GNI) -ALL OTHER STEEL SHALL BE BLAST CLEANED AND LEFT UNPAINTED.											
DESCRIPTION: STRINGER - SIB											
JOB:	BRIDGE NO. 43N										
	I-89 SB OVER U.S. ROUTE 2										
	I-89 IMPROVEMENTS										
	TOWN OF MIDDLESEX - BOLTON, VERMONT										
PROJ. NO.	IM-089-2(26)										
CUSTOMER:	VERMONT AGENCY OF TRANSPORTATION										
CASCO BAY STEEL STRUCTURES, INC.										JOB NO.	DRG. NO.
75 SPRING HILL ROAD										117-43N	206
PHONE (207) 282-7360										FAX.	(207) 282-1179
										REV.	△

PHG: Tue Feb 27 08:44:02 EST 2001 /www.dynacore.com/2001-02-27