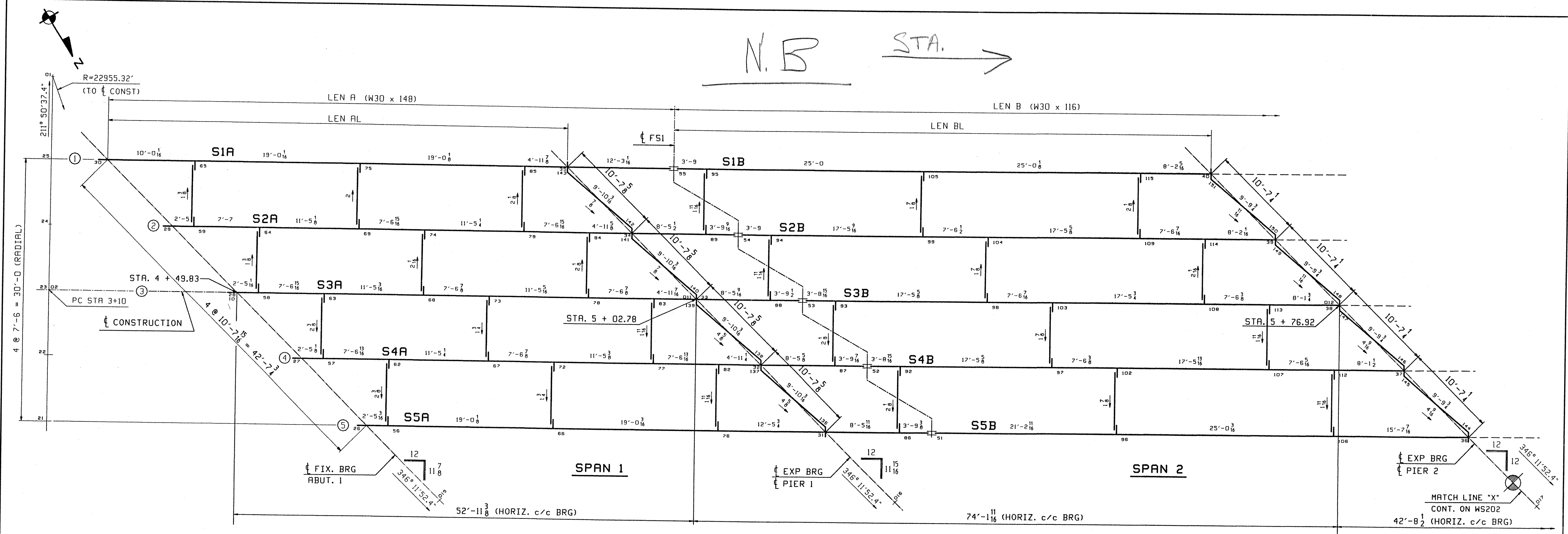


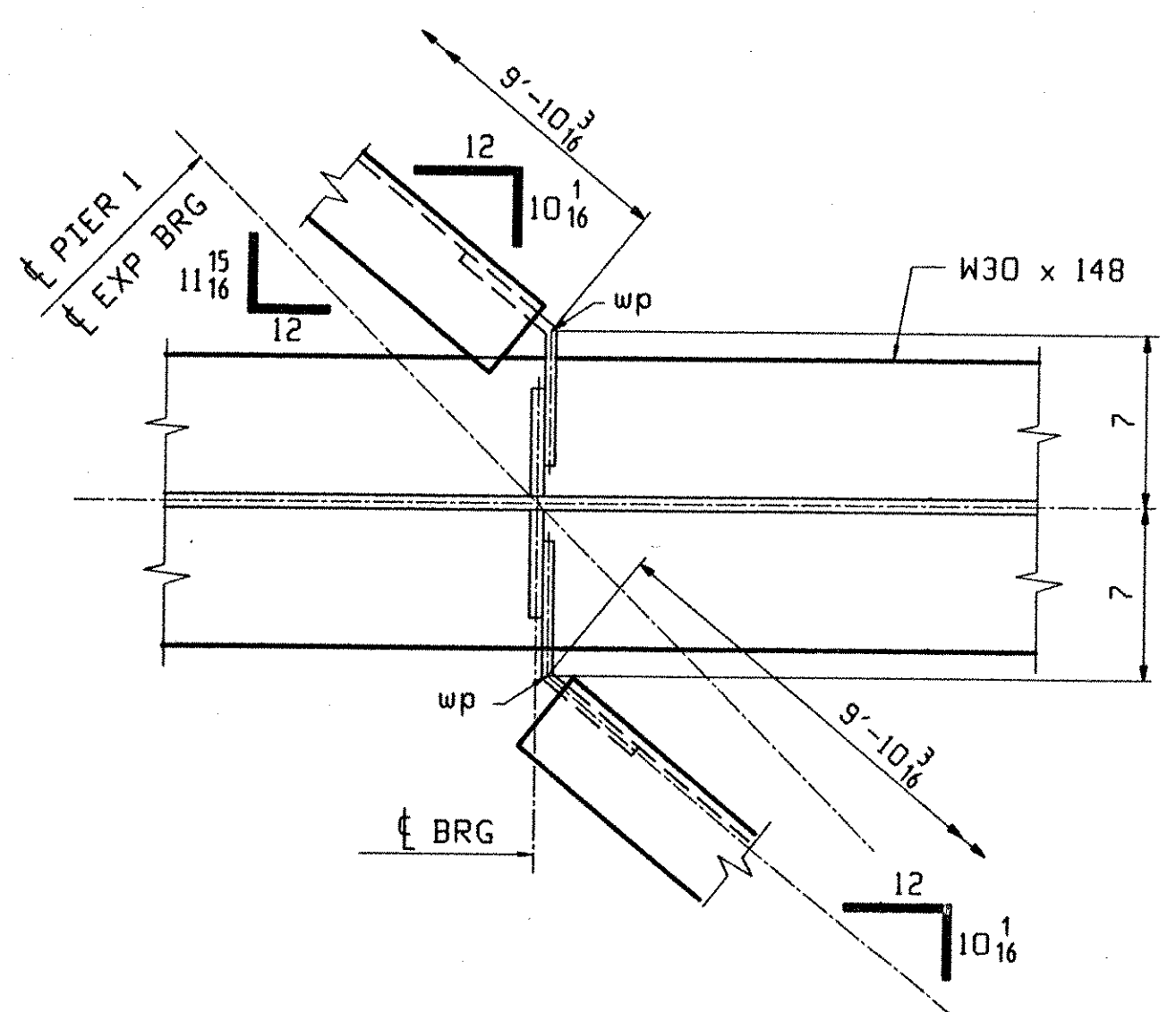
N.B STA. →



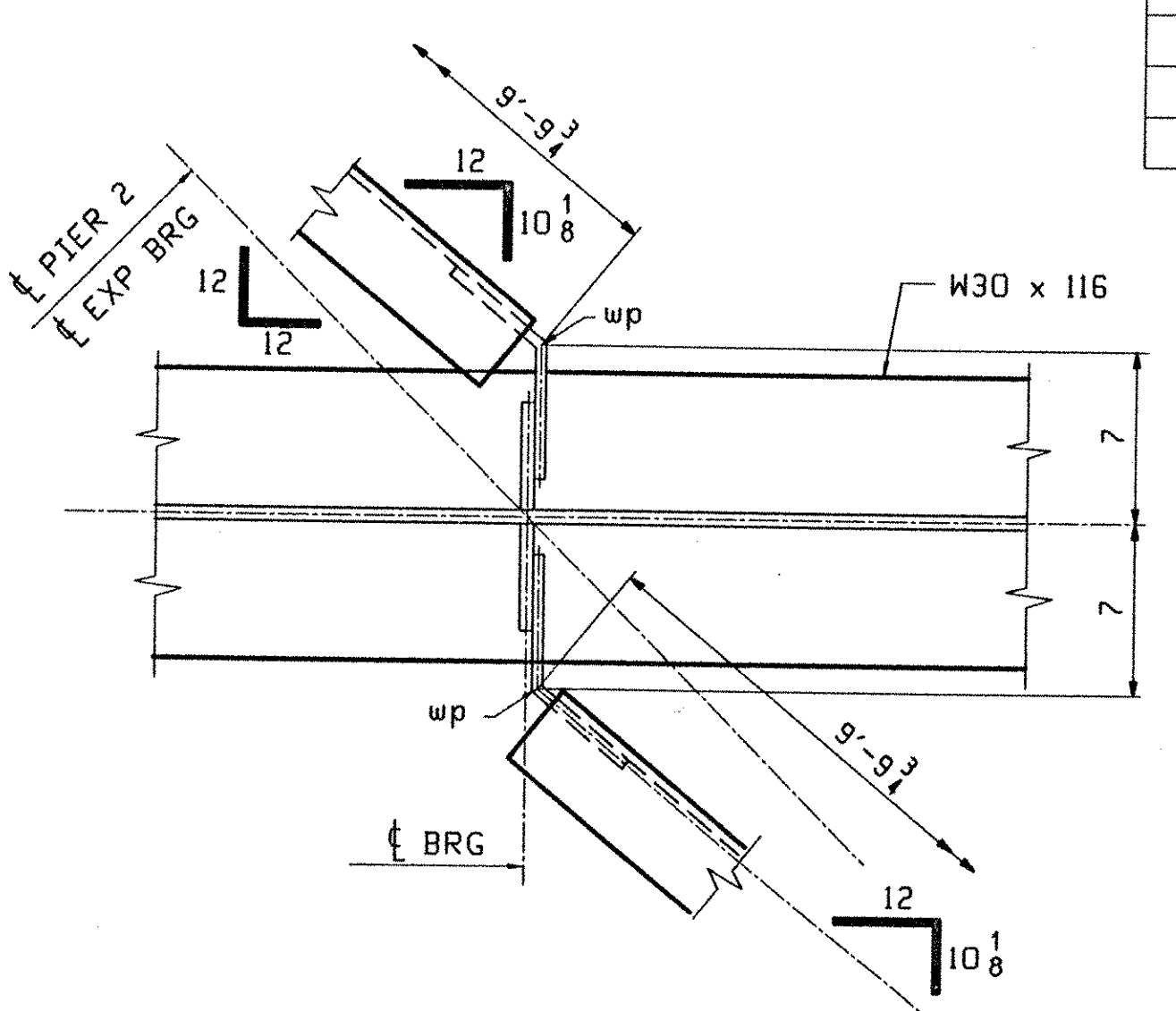
CALCULATION PLAN FOR 43N

Line	DEVELOPED LENGTHS ALONG BTM OF STRINGER				GRADE		
	LEN AL	LEN A	LEN BL	LEN B	ABUT 1	Pier 1	Pier 2
1	53'-0 1/8	65'-3 3/16	61'-11 7/16	104'-8 9/16	-.0222	-.0299	-.0284
2	52'-11 7/8	65'-2 15/16	61'-11 3/16	104'-8 1/8	-.0224	-.0298	-.0289
3	52'-11 11/16	65'-2 3/4	61'-10 7/8	104'-7 11/16	-.0224	-.0298	-.0289
4	52'-11 1/2	65'-2 9/16	61'-10 9/16	104'-7 3/16	-.0224	-.0298	-.0289
5	52'-11 1/4	65'-2 5/16	61'-10 5/16	104'-6 3/4	-.0224	-.0298	-.0285

TVGA
Engineering, Surveying, P.C.
NO EXCEPTIONS TAKEN
FURNISH AS CORRECTED
REVIS AND RESUBMIT
ENGINEER has reviewed Shop Drawings and Samples and other data which Contractor is required to submit, for conformance with the information given in the Contract Documents and compatibility with the design concept of the completed Project as a functioning whole as indicated in the Contract Documents. Such review is not intended to measure methods, techniques, sequences or procedures of construction or to safety precautions and programs incident thereto. Contractor is responsible for dimensions to be confirmed and correlated at the job site; for information that pertains solely to the fabrication processes or to techniques of construction; and for conception of the work of all trades.
BY: *[Signature]*
DATE: 11-06-2001



DIAPHRAGM WORKPOINTS @ PIER 1



DIAPHRAGM WORKPOINTS @ PIER 2

**** NOTE ****
THE PURPOSE OF THIS DRAWING IS TO COORDINATE GEOMETRIC CONTROL INFORMATION. THIS DWG IS SUBMITTED FOR INFORMATION ONLY AND IS NOT INTENDED FOR SHOP FABRICATION.

- NOTES
1. LONGITUDINAL DIMENSIONS ARE SLOPING ALONG BOTM OF STRINGER WITH CORRECTIONS MADE FOR VERTICAL CURVE, GRADE & DL CAMBER (UN).
 2. TRANSVERSE DIMENSIONS ARE IN A HORIZ. PLANE (UN).
 3. ARROW POINTS TOWARDS LOW END OF MEMBER.
 4. ENDS OF STRINGERS AND BRG. STIFF'S ARE VERTICAL AFTER DL ROTATION.
 5. DIAPH STIFF & FIELD SPLICES ARE NORMAL TO GRADE.
 6. BOTM PT NUMBERS = TOP PT NUMBERS + 200.
 7. FOR LAYOUTS SEE DWG TD201.
 8. COMBINE CROSSFRAMES FOR DIFF IN DROPS OF +/- 1/8.
 9. CROSSFRAMES DROPS ARE CALCULATED IN THEIR FINAL POSITION.
 10. WP'S AT 1/2 OF BENT PLATE.

OUT FOR APPROVAL	3501										
OUT FOR APPROVAL											
ISSUED TO SHOP											
FIELD & OFFICE											
REV.	REMARKS	DATE	DWN	CHK	APP	Q.A.	NO.	DIA.	LGT	TYPE	WASHER
	MATERIAL:										
	M270 GR 50W										
	ELECTRODES:										
	HOLES:										
	15/16 Ø (UN)										
	SHOP BOLTS:										
	7/8 Ø (UN)										
SURFACE PREP. & PAINT:											
-STEEL WITHIN 10'-0 OF ABUT 2 SHALL BE PRINTED (SEE GNI)											
-ALL OTHER STEEL SHALL BE BLAST CLEANED AND LEFT UNPAINTED.											
DESCRIPTION: CALCULATION PLAN											
DRAWN BY										DATE	
WL										01/22	
CHKD BY											
JAK										1/23	
APPROV BY											
SUPERVISOR H. J. GATTI											
Q.A.											
PROJ NO. IM-089-2(26)											
CUSTOMER: VERMONT AGENCY OF TRANSPORTATION											
CASCO BAY STEEL STRUCTURES, INC.											
JOB NO.										DRG. NO.	
75 SPRING HILL ROAD										117-43N WS201	
SACO, MAINE 04072											
PHONE (207) 282-7360										FAX. (207) 282-1179	
REV.										△	