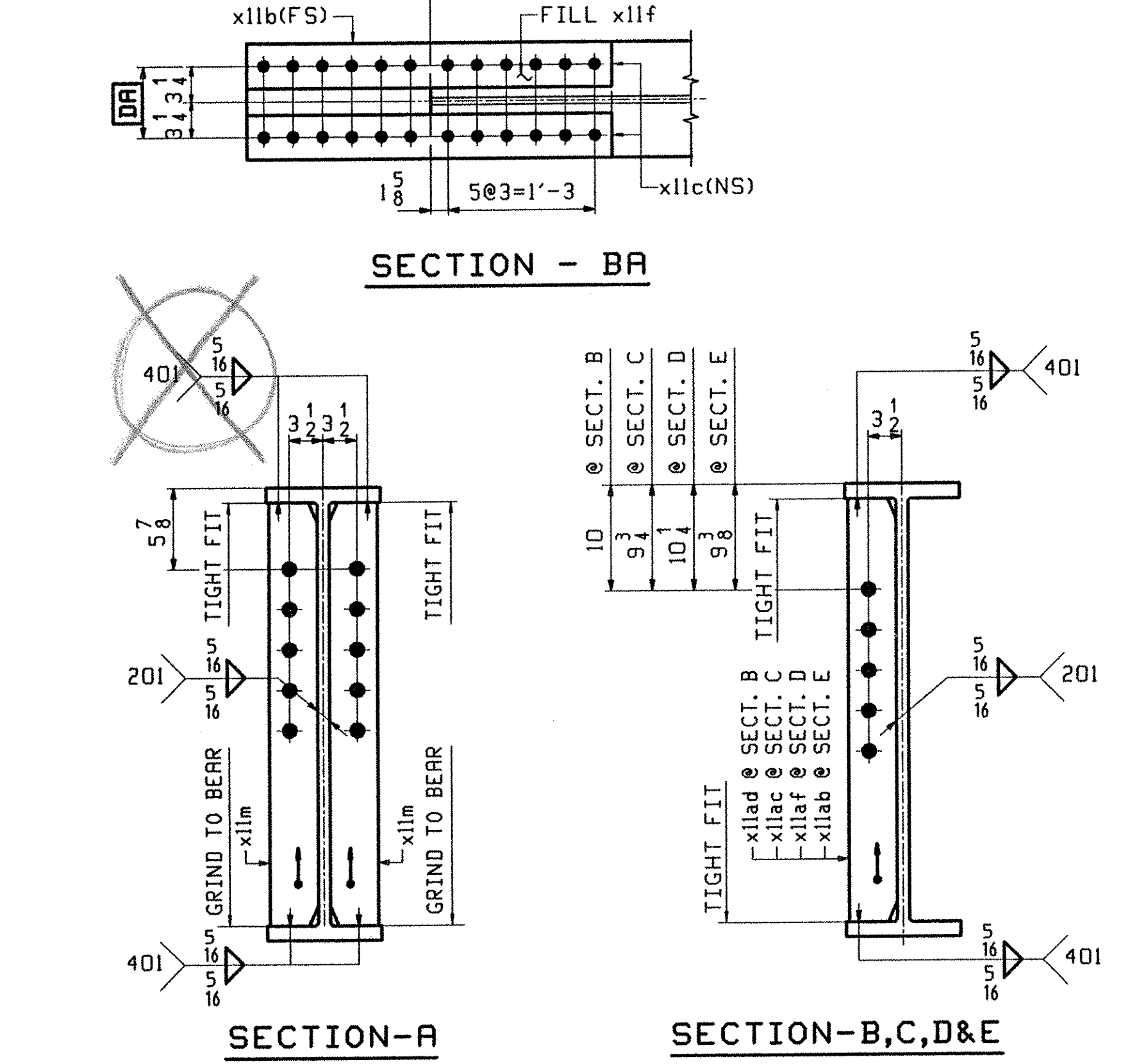


ONE - STRINGER - S4C

1. FOR STRINGER STANDARD DETAILS SEE DRAWING XII.
2. FOR CAMBER AND FLANGE DIAGRAMS SEE DRAWING C102.
3. FOR GENERAL NOTES SEE DRAWING GNI.

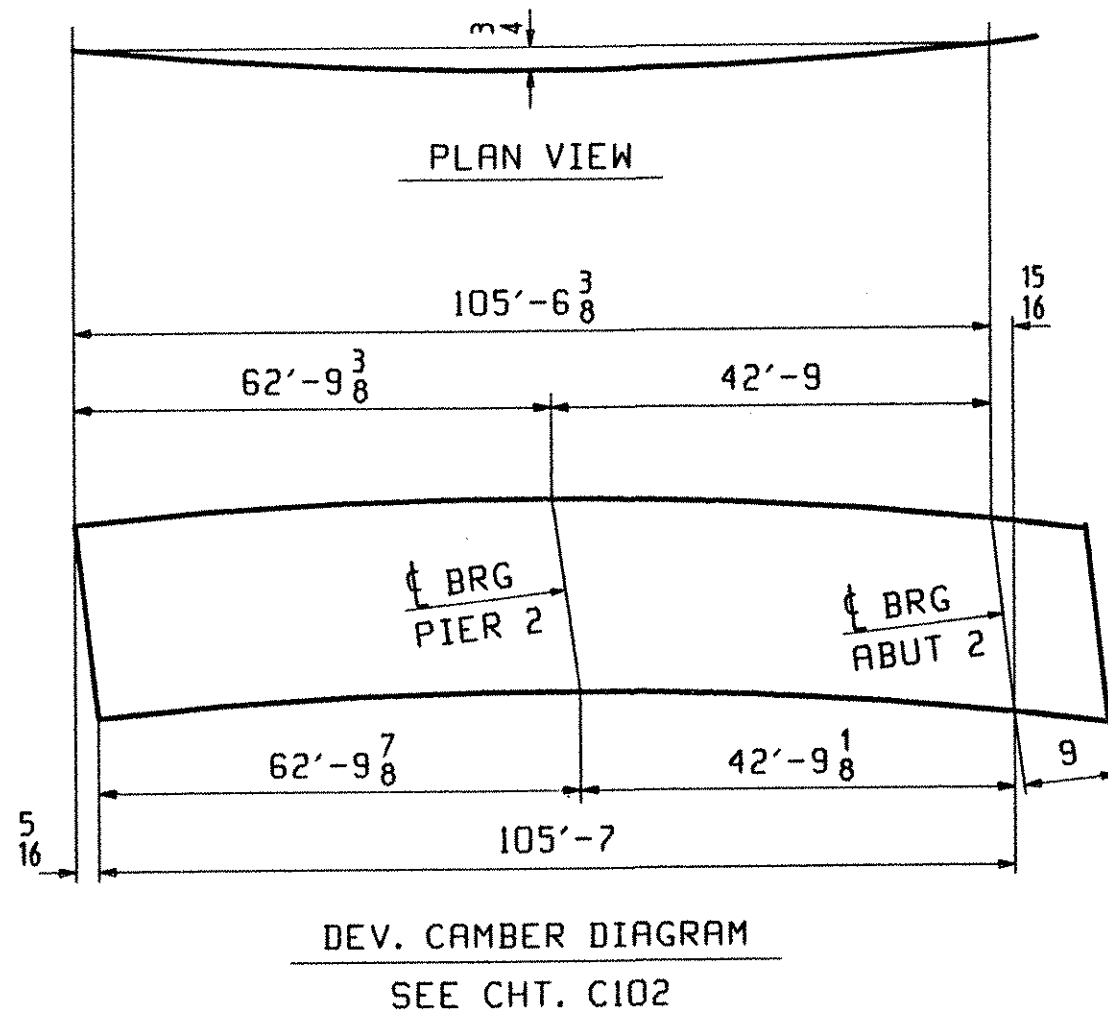


TVGA
Engineering, Surveying, P.C.

NO EXCEPTIONS TAKEN REJECTED
 FURNISH AS CORRECTED
 REVISE AND RESUBMIT

ENGINEER has reviewed Shop Drawings and Samples and other data which Contractor is required to furnish, and for performance with the information given in the Contract Documents and compliance with the vision consent of the completed project as a condition where as indicated in the Contract Documents. Both parties do not intend to repair, methods, techniques, equipment or processes of construction or to vary procedures and program methods thereof. Contractor is responsible for compliance to be confirmed and corrected at the job site; for possession that permits entry to the technical procedure or to technical construction and for coordination of the work at all times.

BY: *P. W. S. C.*
DATE: 3/20/01



ABM INFO		BILL OF MATERIAL				JOB NO.	DRAWING NO.	REV.	
PAGE	LINE	MARK	QTY	MARK	MATERIAL	LENGTH FT INCHES	REMARKS	WT	PROCUREMENT NOTES
		S4C	1		STRINGER			14581	
101	E		1	wa	W 33x130	105' 4 5/8	(M270-50MT2) (H2-3)		
102	B		2	x11a	PL 1/2x29 1/2	1' 7"	(M270-50MT2) (H2-3)		
102	F		2	x11d	PL 16GA x 9 3/8	2' 5 1/2"	(A606-4) FILL		
102	C		2	x11b	PL 5/8x11 1/2	3' 1"	(M270-50MT2) (H2-3)		
102	D		4	x11c	PL 3/4x4 1/2	3' 1"	(M270-50MT2) (H2-3)		
102	G		2	x11f	PL 5/8x11 1/2	1' 6 3/8"	FILL		
102	M		1	x11ad	PL 1/2x5	2' 7 3/8"			
102	M		4	x11s	PL 1/2x5	2' 7 3/8"			
102	M		2	x11ac	PL 1/2x5	2' 7 3/8"			
102	K		2	x11m	PL 5/8x5	2' 7 3/8"			
102	M		1	x11af	PL 1/2x5	2' 7 3/8"			
102	M		1	x11ab	PL 1/2x5	2' 7 3/8"			

OUT FOR APPROVAL	2-2-01										
OUT FOR APPROVAL											
ISSUED TO SHOP											
FIELD & OFFICE											
REV.	REMARKS	DATE	DWN	CHK	APP	O.A.	NO.	DIA.	LGT	TYPE	WASHER
	MATERIAL:										
	M270 GR 50W U.N.										
	ELECTRODES:										
	HOLES:										
	15/16 Ø (UN)										
	SHOP BOLTS:										
	7/8 Ø (UN)										
SURFACE PREP. & PAINT: -STEEL WITHIN 10'-0 OF ABUT 1 SHALL BE PRINTED (SEE GNI) -ALL OTHER STEEL SHALL BE BLAST CLEANED AND LEFT UNPAINTED.											
DESCRIPTION: STRINGER - S4C										DRAWN BY	DATE
JOB: BRIDGE NO. 43S										PHG	01/24
I-89 SB OVER U.S. ROUTE 2										CHKD BY	
I-89 IMPROVEMENTS										TRM	01/27
TOWN OF MIDDLESEX-BOLTON, VERMONT										APPROV BY	
TENSOR 2106-5										SUPERVISOR	W. J. GATTI
PROJ NO. IM-089-2(26)										O.A.	
CUSTOMER: VERMONT AGENCY OF TRANSPORTATION											
CASCO BAY STEEL STRUCTURES, INC.										JOB NO.	DRG. NO.
75 SPRING HILL ROAD										116-43S	114
PHONE (207) 282-7360										SACO, MAINE 04072	
FAX. (207) 282-1179										REV.	△