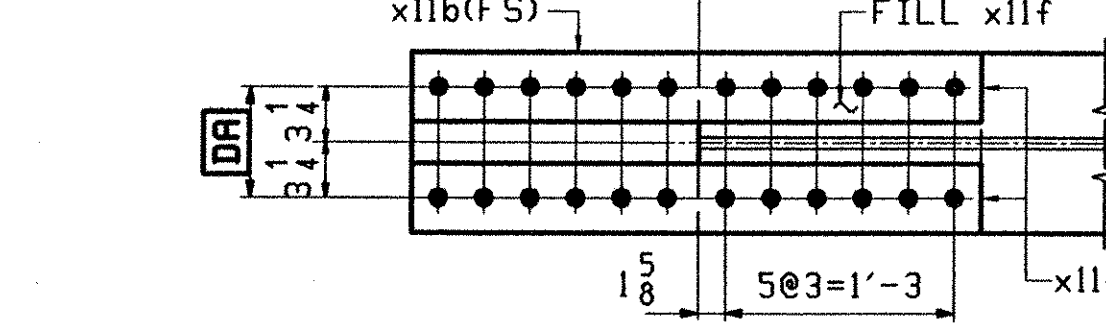
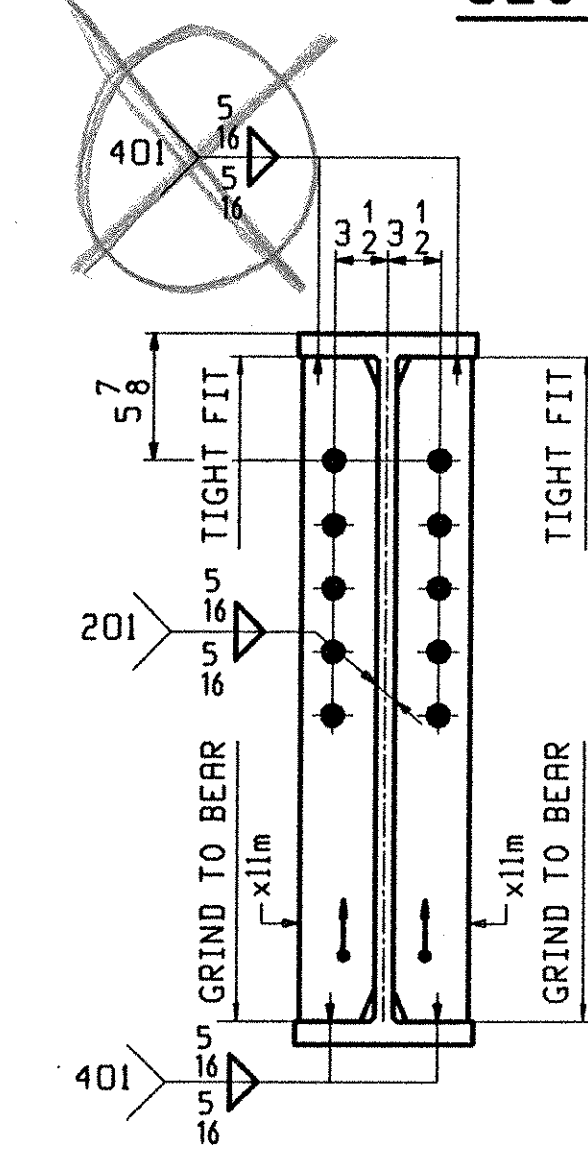


**ONE - STRINGER - S3C**

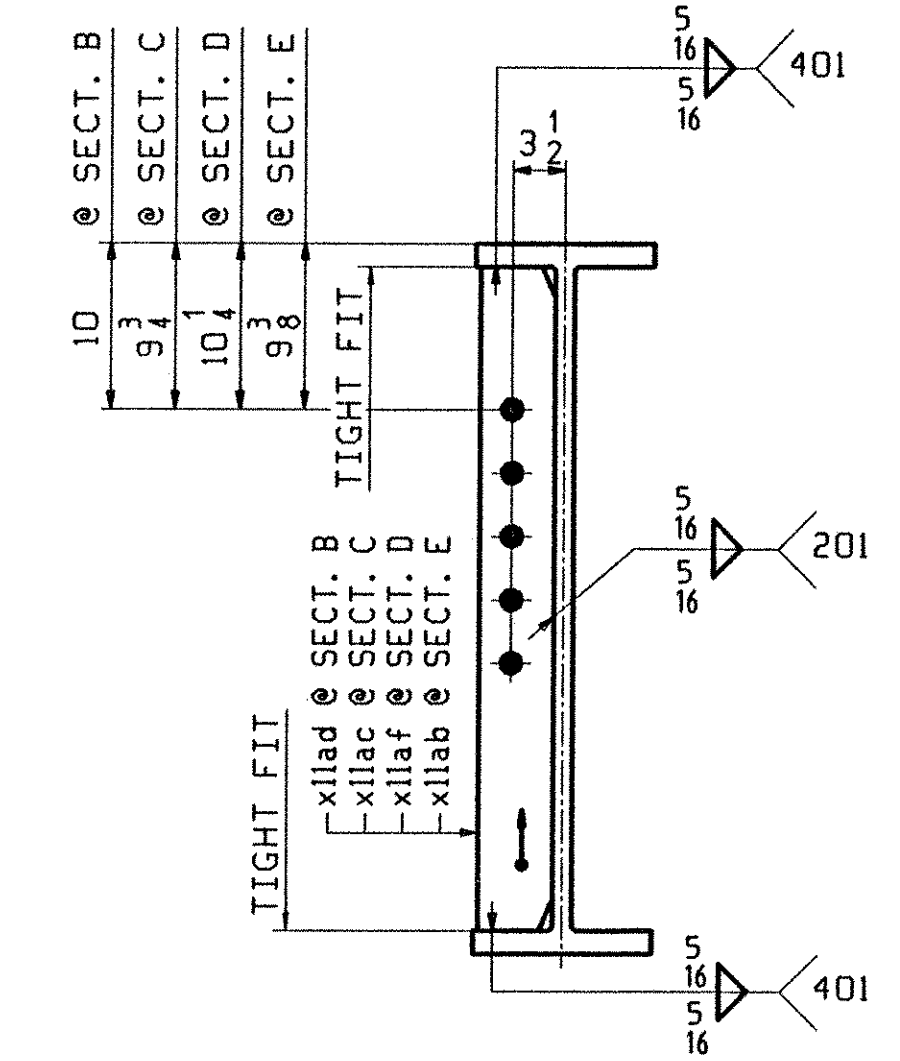
1. FOR STRINGER STANDARD DETAILS SEE DRAWING XII.
2. FOR CAMBER AND FLANGE DIAGRAMS SEE DRAWING C102.
3. FOR GENERAL NOTES SEE DRAWING GNI.



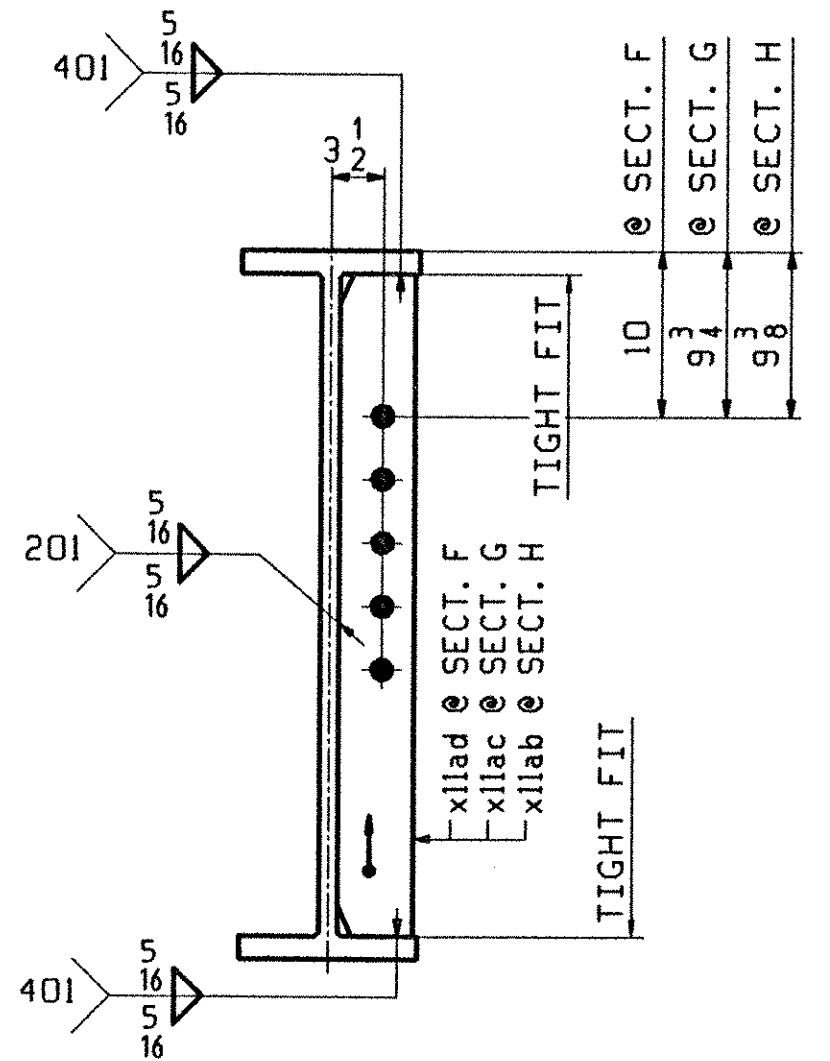
**SECTION - BA**



**SECTION - A**



**SECTION - B, C, D & E**



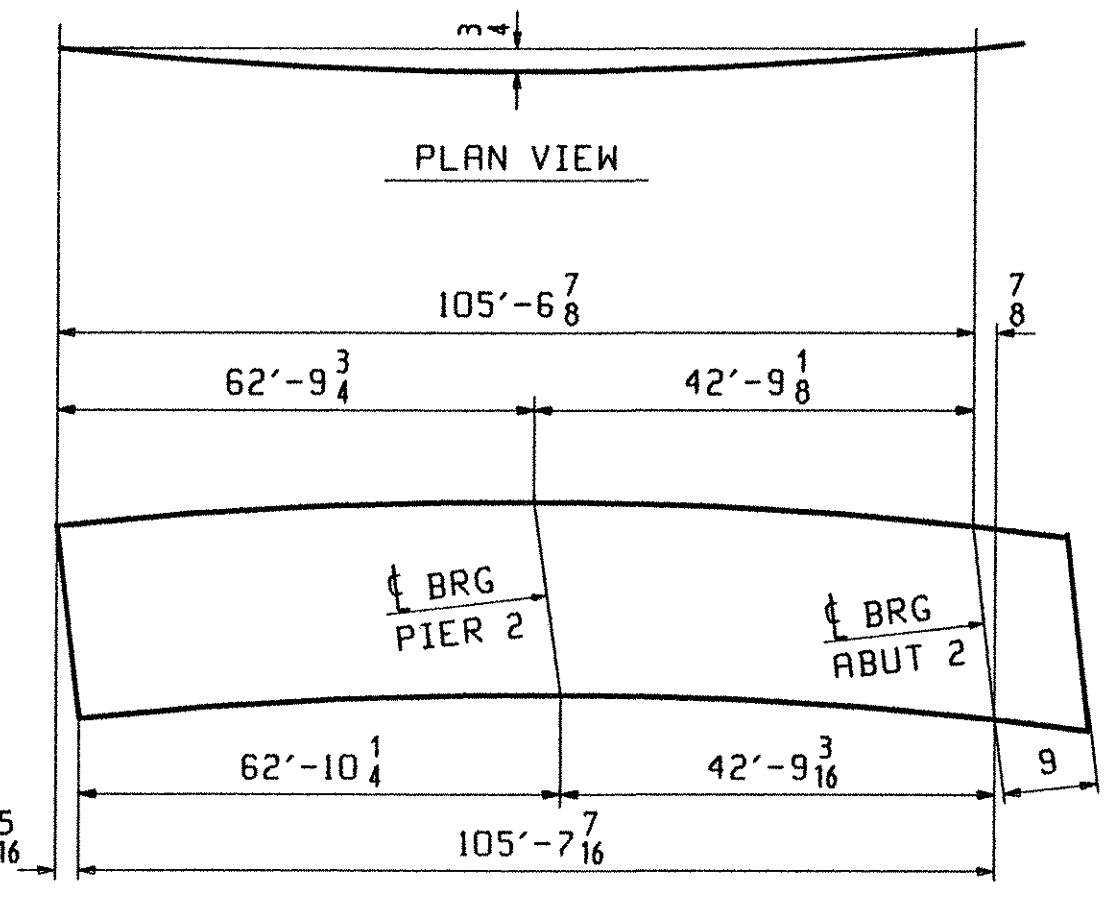
**SECTION - F, G & H**

**TVGA**  
Engineering, Surveying, P.C.

NO EXCEPTIONS TAKEN  REJECTED  
 FURNISH AS CORRECTED  
 REVISE AND RESUBMIT

ENGINEER has reviewed Shop Drawings and Samples and other data which Contractor is required to submit, only for conformance with the information given in the Contract Documents and compliance with the design except of the completed project as a transferable work as recorded in the Contract Documents. Such review is not intended to insure, methods, techniques, sequences or procedures of work, or to safety precautions and programs incident thereto. Contractor is responsible for compliance to the contract and completed at the job site for information that pertains solely to the fabrication processes or to techniques of construction and for coordination of the work of all trades.

BY: *P. W. S. C.*  
DATE: *3/20/01*



**DEV. CAMBER DIAGRAM**  
SEE CHT. C102

ABM INFO		SHIP				BILL OF MATERIAL		JOB NO.		DRAWING NO.		REV.
PAGE	LINE	MARK	QTY	MARK	MATERIAL	LENGTH	REMARKS	WT	113		PROCUREMENT	NOTES
						FT						
		S3C	1		STRINGER				14585			
101	E		1	wa	H 33x130	106	(M270-50HT2) (H2-3)					
102	B		2	x11a	PL 1/2x29 1/2	1	(M270-50HT2) (H2-3)					
102	F		2	x11d	PL 16GA x 9 3/8	2	(A606-4) FILL					
102	C		2	x11b	PL 5/8x11 1/2	3	(M270-50HT2) (H2-3)					
102	D		4	x11c	PL 3/4x4 1/2	3	(M270-50HT2) (H2-3)					
102	G		2	x11f	PL 5/16x11 1/2	1	FILL					
102	M		3	x11ad	PL 1/2x5	2						
102	H		3	x11ac	PL 1/2x5	2						
102	K		2	x11m	PL 1/2x5	2						
102	M		2	x11ab	PL 1/2x5	2						
102	M		1	x11af	PL 1/2x5	2						

OUT FOR APPROVAL	2-2-01											
ISSUED TO SHOP												
FIELD & OFFICE												
REV.	REMARKS	DATE	DWN	CHK	APP	Q.A.	NO.	DIA.	LGT	TYPE	WASHER	
MATERIAL:	M270 GR 50W U.N.	ELECTRODES:										
		HOLES:						15/16			SHOP BOLTS:	
											7/8	(UN)
SURFACE PREP. & PAINT: -STEEL WITHIN 10'-0" OF ABUT 1 SHALL BE PAINTED (SEE GNI) -ALL OTHER STEEL SHALL BE BLAST CLEANED AND LEFT UNPAINTED.												
DESCRIPTION: STRINGER - S3C										DRAWN BY	DATE	
JOB: BRIDGE NO. 435										PHG	01/24	
I-89 SB OVER U.S. ROUTE 2										CHKD BY		
I-89 IMPROVEMENTS										TRM	01/27	
TOWN OF MIDDLESEX-BOLTON, VERMONT										APPROV BY		
										SUPERVISOR	M. J. GATTI	
PROJ NO. IM-089-2(26)										Q.A.		
CUSTOMER: VERMONT AGENCY OF TRANSPORTATION												
<b>CASCO BAY STEEL STRUCTURES, INC.</b>										JOB NO.	DRG. NO.	
75 SPRING HILL ROAD										116-435	113	
PHONE (207) 282-7360										SACO, MAINE 04072		
FAX (207) 282-1179										REV.	△	