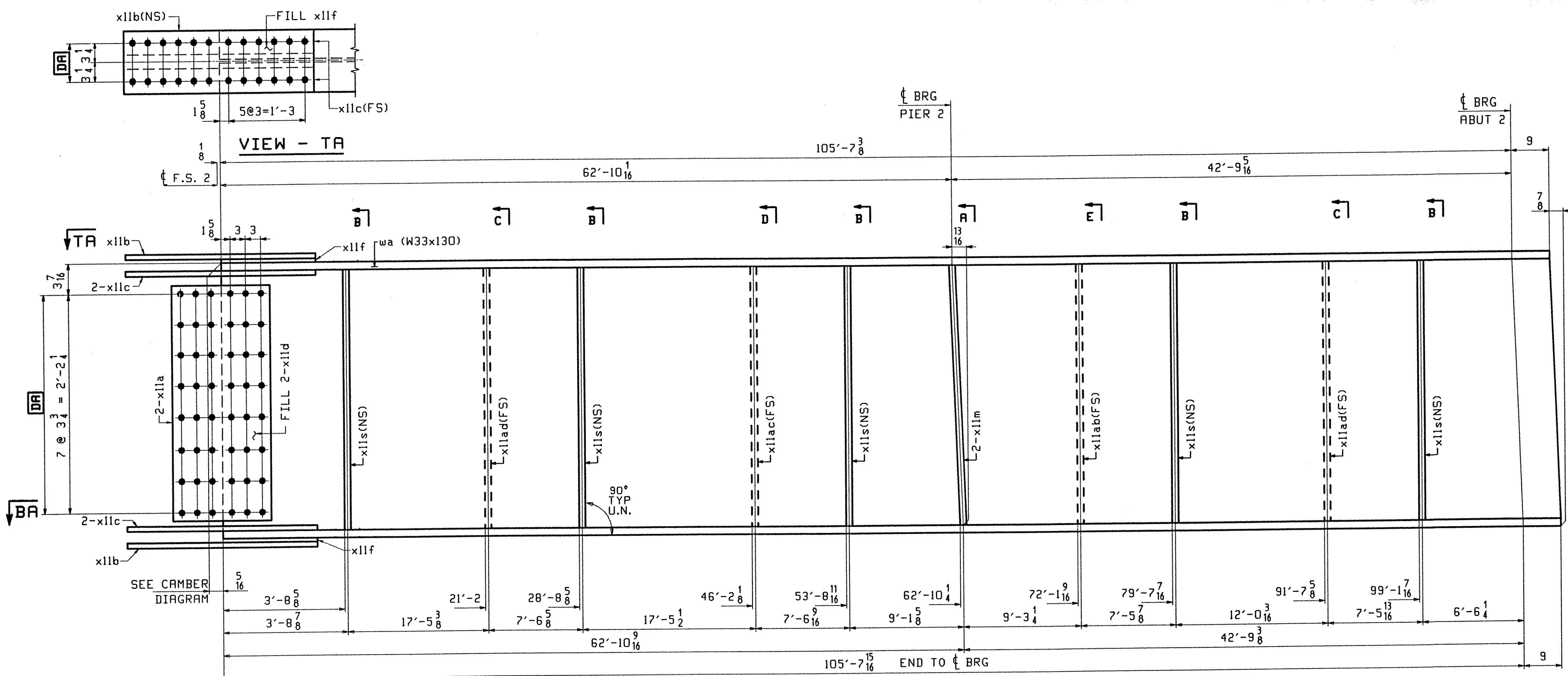
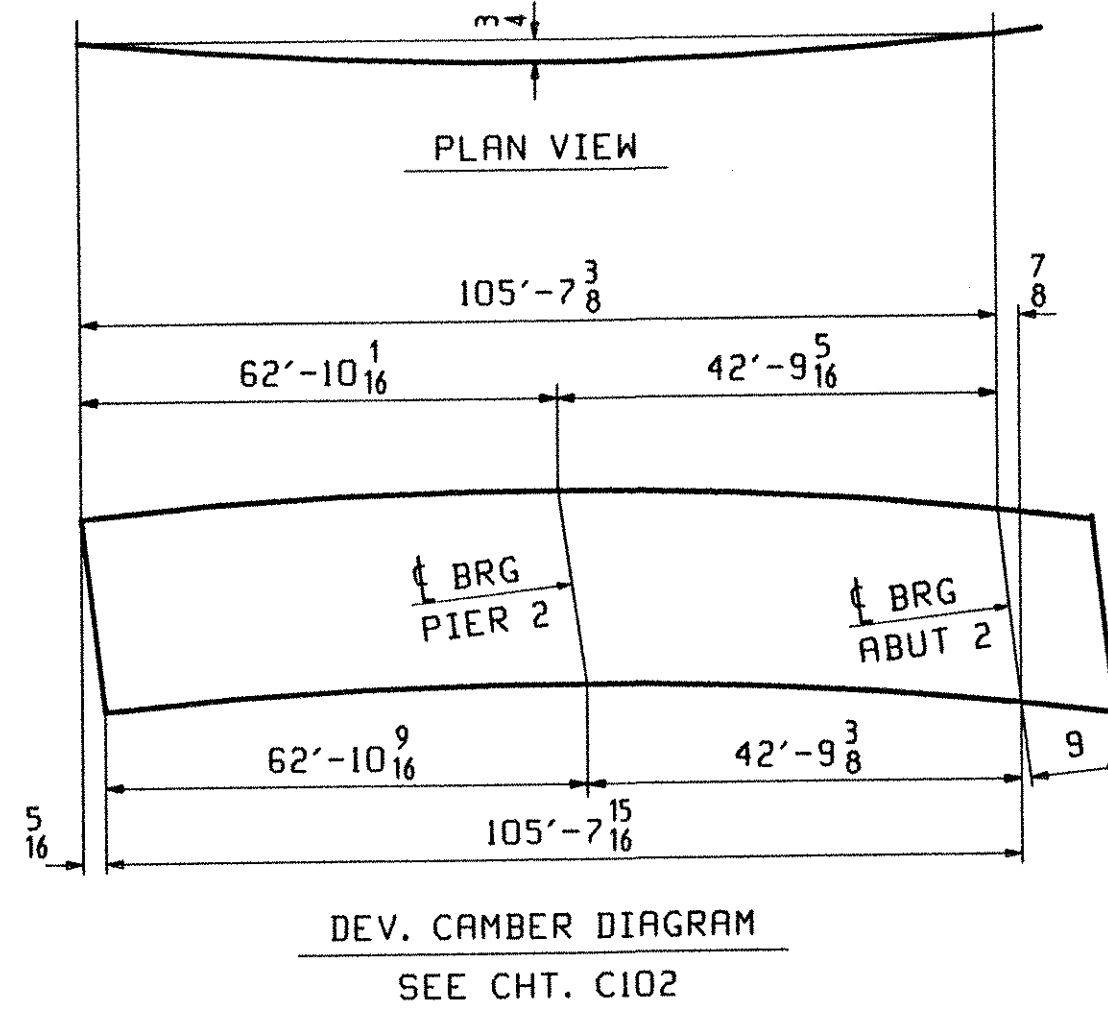
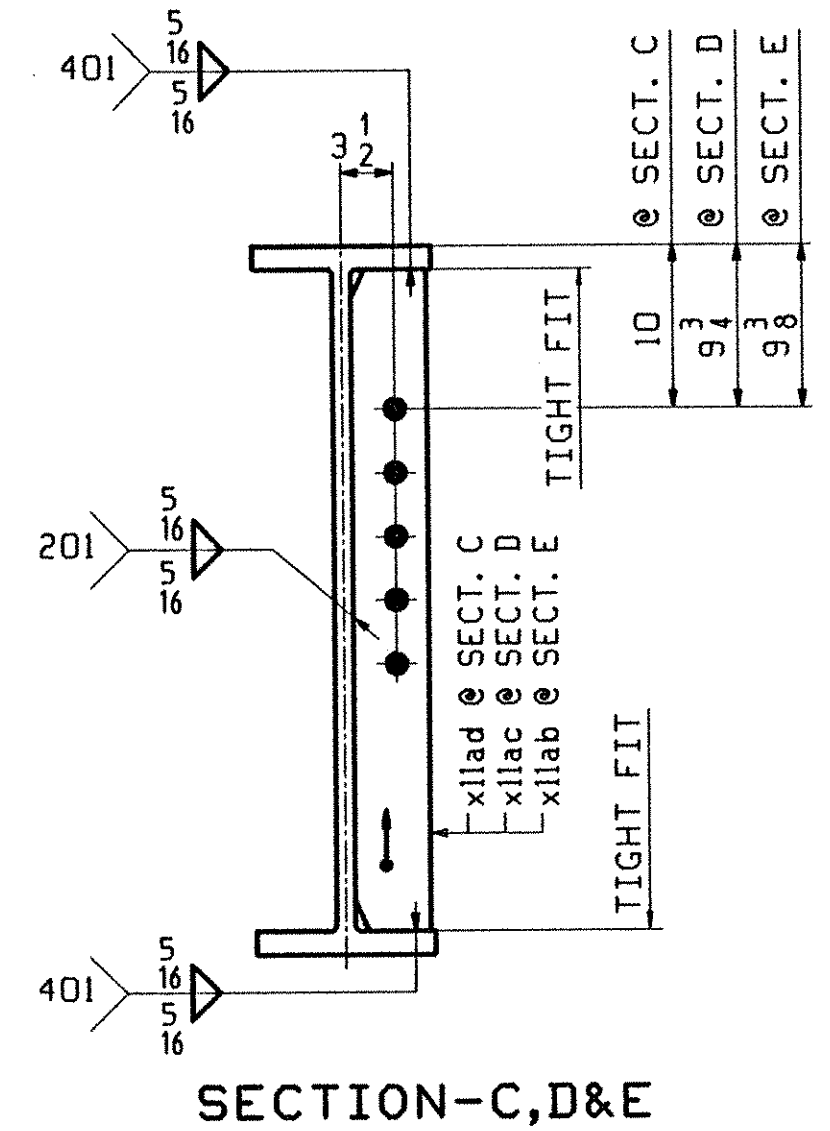
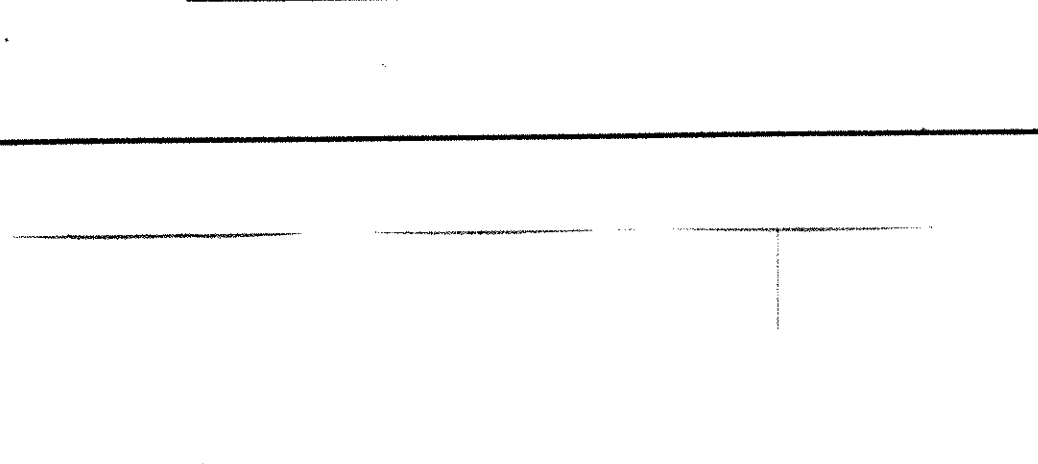
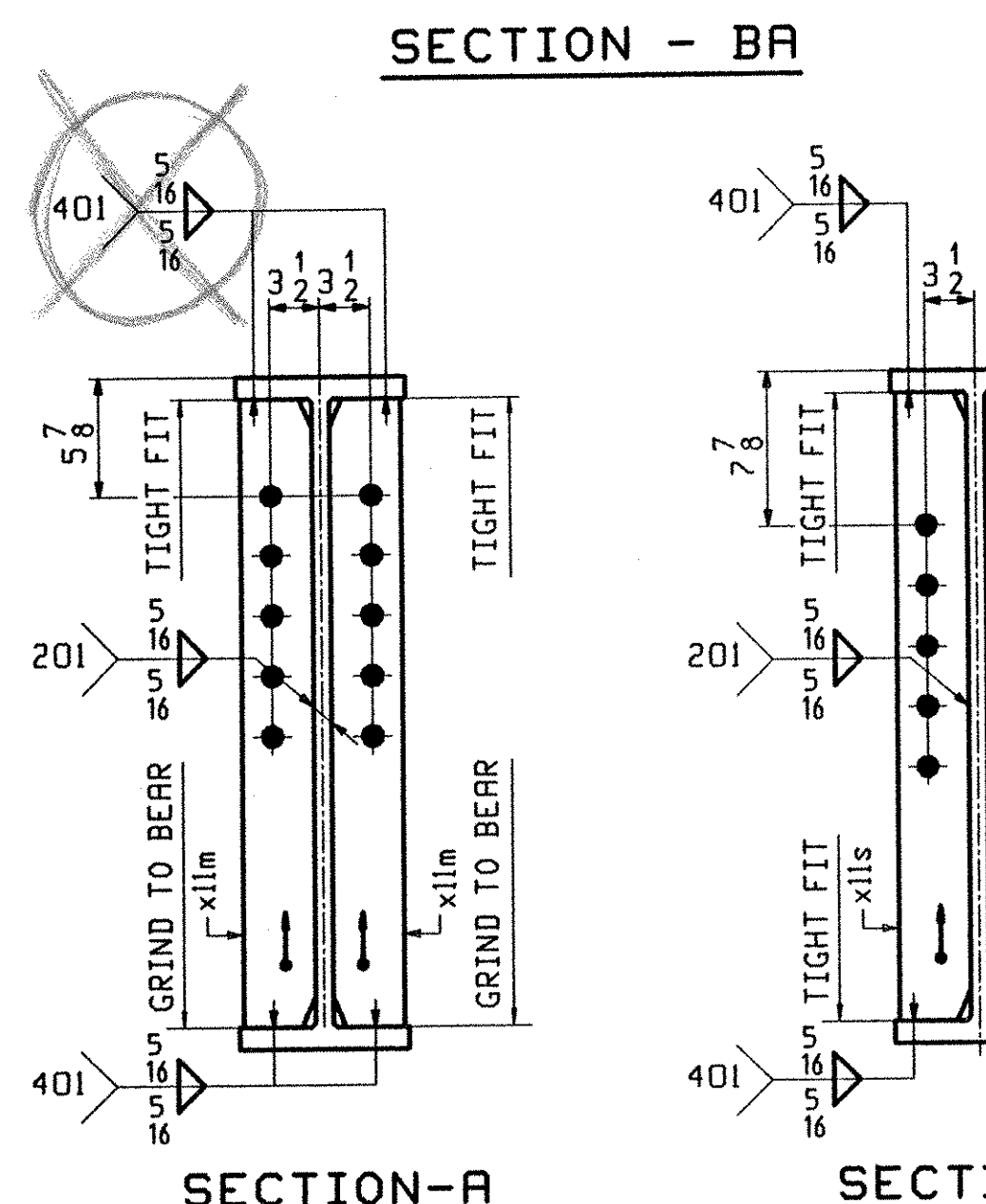
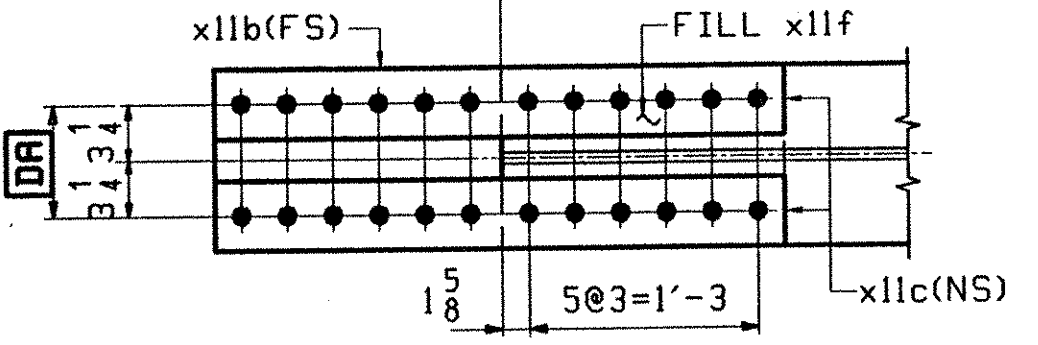


JOB NO.		DRAWING NO.		REV.					
JOB NO.		DRAWING NO.		REV.					
101	E	1	wa	W 33x130	106	5 1/8	(M270-50MT2) (H2-3)		
102	B	2	x11a	PL 1/2x29 1/2	1	7	(M270-50MT2) (H2-3)		
102	F	2	x11d	PL 16GA x 9 3/8	2	5 1/2	(A606-4) FILL		
102	C	2	x11b	PL 5/8x11 1/2	3	1	(M270-50MT2) (H2-3)		
102	D	4	x11c	PL 3/4x4 1/2	3	1	(M270-50MT2) (H2-3)		
102	G	2	x11f	PL 5/16x11 1/2	1	6 3/8	FILL		
102	M	5	x11s	PL 1/2x5	2	7 3/8			
102	M	2	x11ad	PL 1/2x5	2	7 3/8			
102	M	1	x11ac	PL 1/2x5	2	7 3/8			
102	K	2	x11m	PL 5/8x5	2	7 3/8			
102	M	1	x11ab	PL 1/2x5	2	7 3/8			



ONE - STRINGER - S2C

1. FOR STRINGER STANDARD DETAILS SEE DRAWING XII.
2. FOR CAMBER AND FLANGE DIAGRAMS SEE DRAWING C102.
3. FOR GENERAL NOTES SEE DRAWING GNI.



TVGA
Engineering, Surveying, P.C.

NO EXCEPTIONS TAKEN REJECTED
 FURNISH AS CORRECTED
 REVISE AND RESUBMIT

ENGINEER has reviewed Shop Drawings and Samples and other data which Contractor is required to submit only for conformance with the information given in the Contract Documents and compliance with the design concept of the completed Project as a forgoing whole as indicated in the Contract Documents. Such review is not intended to certify, methods, techniques, sequences, procedures of construction or to safety precautions and programs. Engineer's responsibility is limited to the design and coordination of the job site, for information that pertains solely to the fabrication processes or to techniques of construction and for coordination of the work of all trades.

BY: *[Signature]*
DATE: 3/20/01

OUT FOR APPROVAL	2-2-01										
OUT FOR APPROVAL											
ISSUED TO SHOP											
FIELD & OFFICE											
REV.	REMARKS	DATE	DWN	CHK	APP	O.A.	NO.	DIA.	LGT	TYPE	WASHER
MATERIAL:	M270 GR 50W U.N.	ELECTRODES:		HOLES:	15/16 Ø (UN)	SHOP BOLTS:				7/8 Ø (UN)	
SURFACE PREP. & PAINT: -STEEL WITHIN 10'-0" OF ABUT 1 SHALL BE PAINTED (SEE GNI) -ALL OTHER STEEL SHALL BE BLAST CLEANED AND LEFT UNPAINTED.											
DESCRIPTION:	STRINGER - S2C					DRAWN BY	DATE				
JOB:	BRIDGE NO. 435 I-89 SB OVER U.S. ROUTE 2 I-89 IMPROVEMENTS TOWN OF MIDDLESEX-BOLTON, VERMONT					PHG	01/24				
TENSOR 2106-S						CHKD BY	TRM	01/27			
PROJ NO.	1M-089-2(26)					APPROV BY	SUPERVISOR W. J. GATTI				
CUSTOMER:	VERMONT AGENCY OF TRANSPORTATION					Q.A.					
CASCO BAY STEEL STRUCTURES, INC.						JOB NO.	DRG. NO.				
75 SPRING HILL ROAD SACO, MAINE 04072						116-435	112				
PHONE (207) 282-7360 FAX. (207) 282-1179						REV.	△				