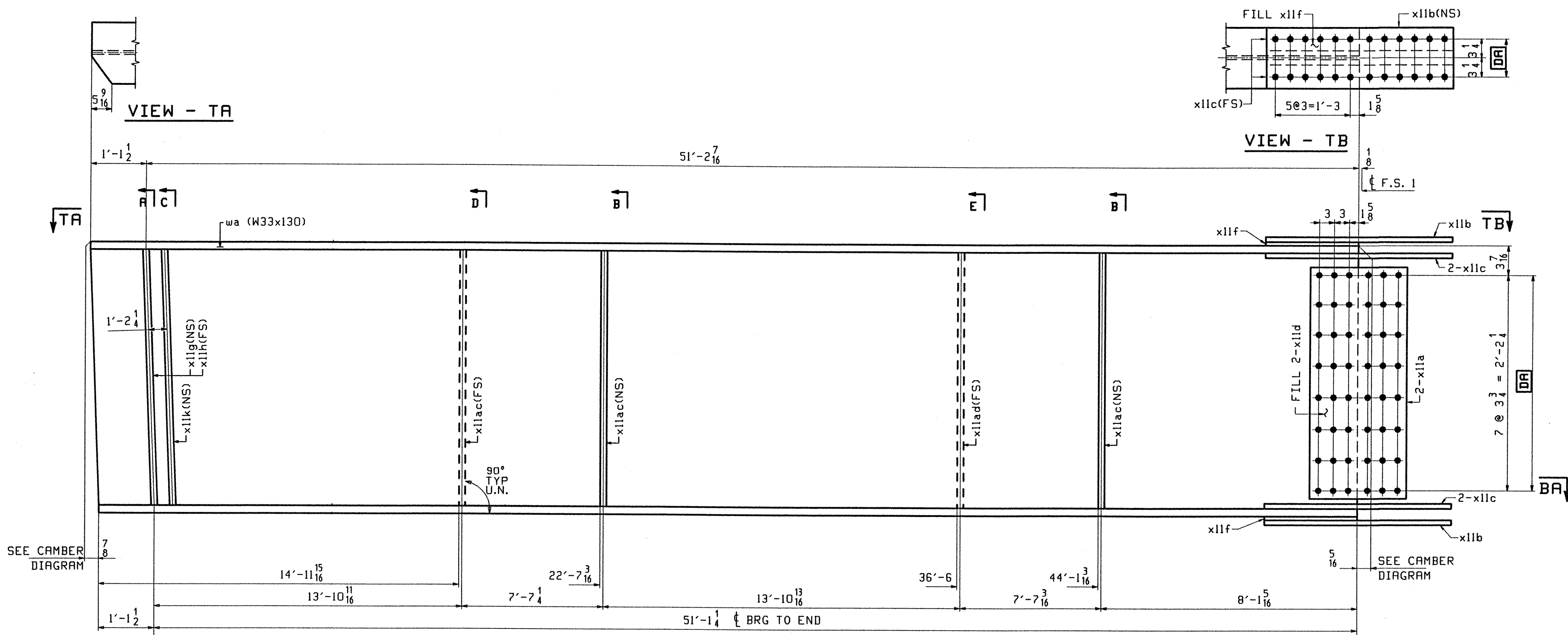
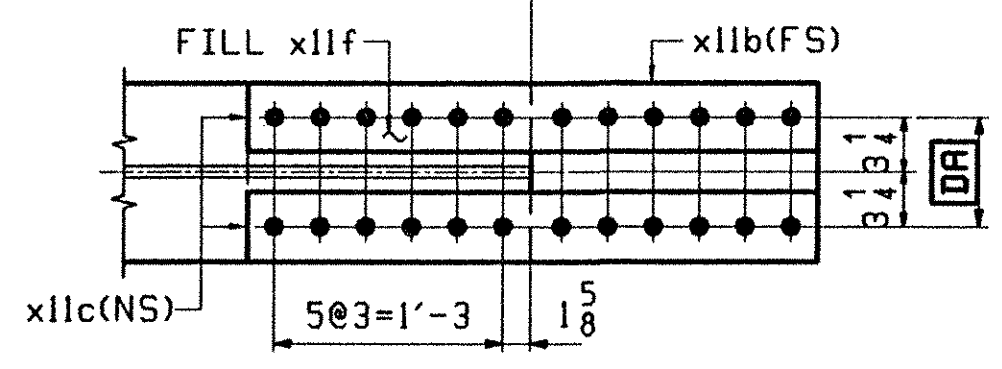


JOB NO.		DRAWING NO.		REV.					
103		103							
PAGE	LINE	MARK	QTY	MARK	MATERIAL	LENGTH FT INCHES	REMARKS	WT	PROCUREMENT NOTES
		S3A	1		STRINGER			7473	
101	C		1	wa	W 33x130	52 3 ¹⁵ / ₁₆	(M270-50HT2) (H2-3)		
102	B		2	x11a	PL 2x29 ¹ / ₂	1 7	(M270-50HT2) (H2-3)		
102	F		2	x11d	PL 16GA x 9 ³ / ₈	2 5 ¹ / ₂	(A606-4) FILL		
102	C		2	x11b	PL 8x11 ¹ / ₂	3 1	(M270-50HT2) (H2-3)		
102	D		4	x11c	PL 3/4x4 ¹ / ₂	3 1	(M270-50HT2) (H2-3)		
102	G		2	x11f	PL 5/16x11 ¹ / ₂	1 6 ³ / ₈	FILL		
102	K		1	x11g	PL 5/8x5	2 7 ³ / ₈			
102	K		1	x11h	PL 5/8x5	2 7 ³ / ₈			
102	K		1	x11k	PL 5/8x5	2 7 ³ / ₈			
102	M		3	x11ac	PL 2x5	2 7 ³ / ₈			
102	M		1	x11ad	PL 2x5	2 7 ³ / ₈			

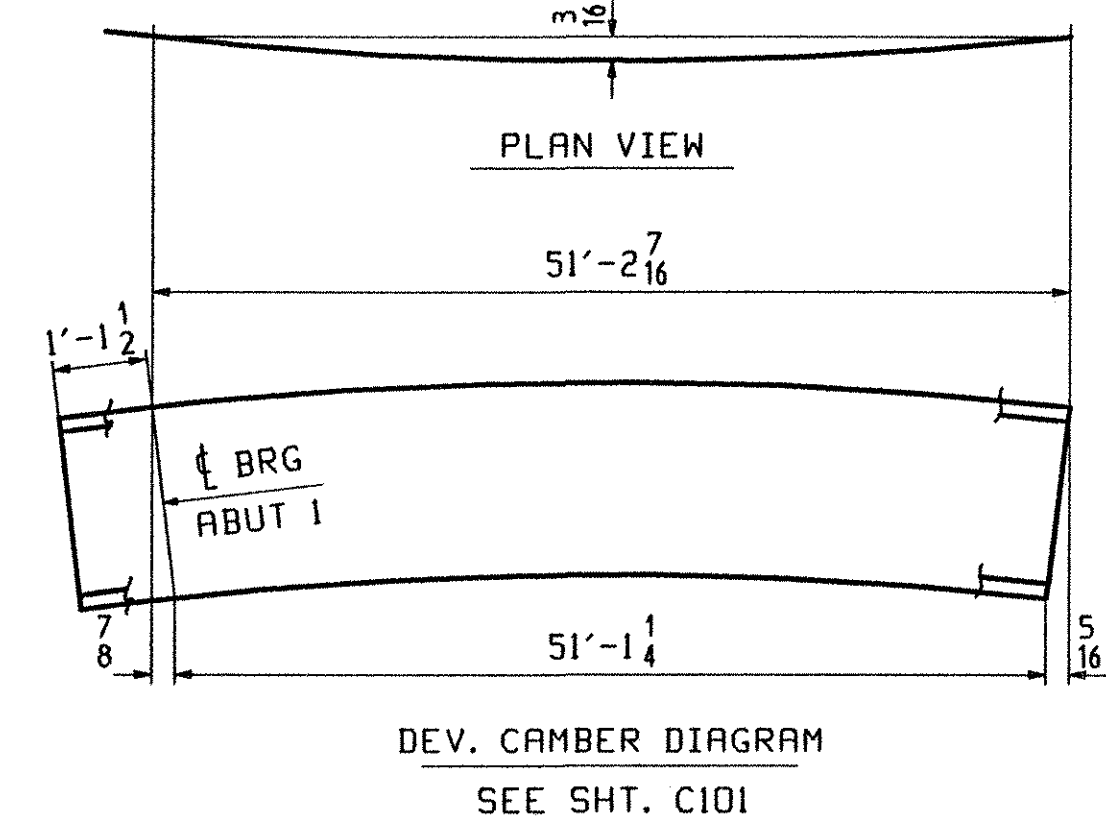
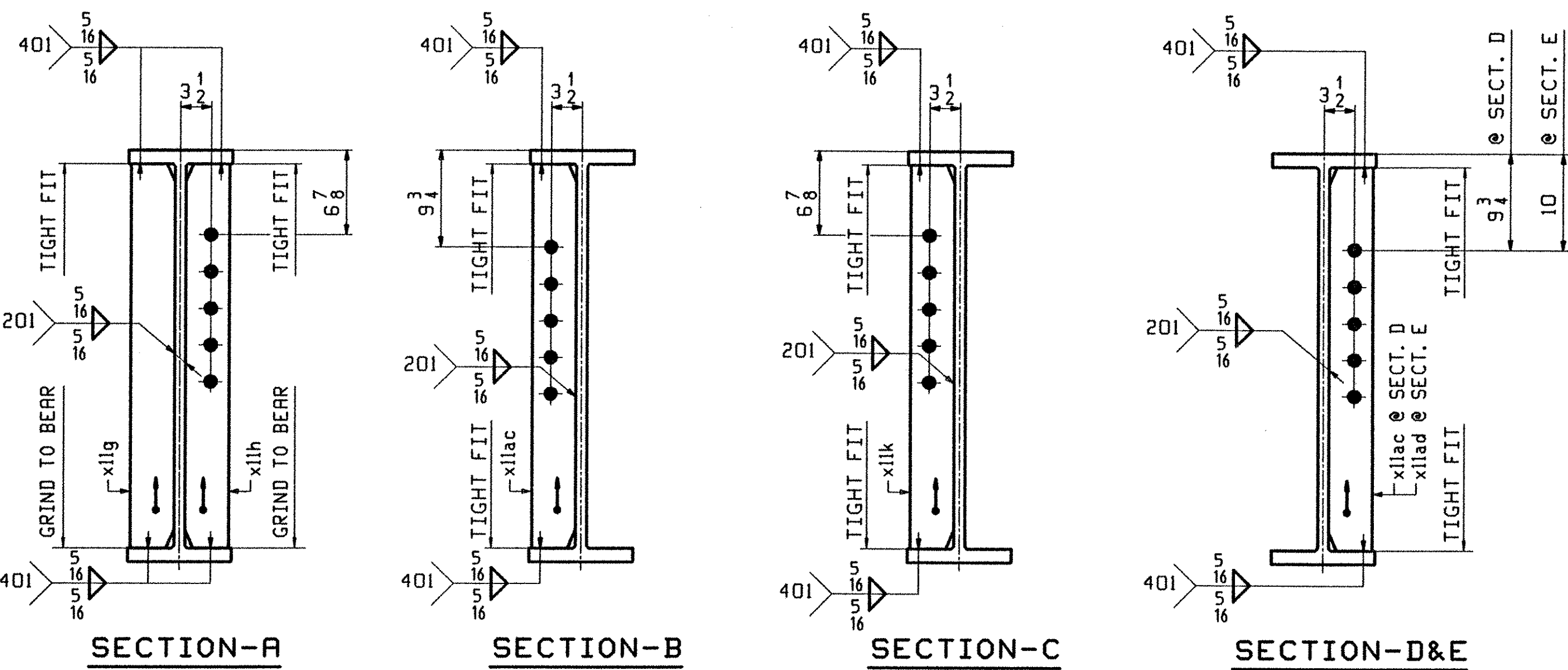


ONE - STRINGER - S3A

1. FOR STRINGER STANDARD DETAILS SEE DRAWING XII.
2. FOR CAMBER AND FLANGE DIAGRAMS SEE DRAWING C101.
3. FOR GENERAL NOTES SEE DRAWING GNI.



SECTION - BA



TVGA
Engineering, Surveying, P.C.

NO EXCEPTIONS TAKEN REJECTED
 FURNISH AS CORRECTED
 REVISE AND RESUBMIT

ENGINEER has reviewed Shop Drawings and Samples and other data which Contractor is required to submit, sets for conformance with the information given in the Contract Documents and compatibility with the design concept of the completed Project as a condition of work as indicated in the Contract Documents. Such reviews do not extend to means, methods, techniques, sequences or procedures of construction or to safety precautions and programs incident thereto. Contractor is responsible for dimensions to be confirmed and correlated at the job site, for information that pertains solely to the fabrication processes or to techniques of construction; and for coordination of the work of all trades.

BY: Pat W. S.T.
DATE: 3/20/01

OUT FOR APPROVAL	2-20-01										
ISSUED TO SHOP											
FIELD & OFFICE											
REV.	REMARKS	DATE	DWN	CHK	APP	Q.A.	NO.	DIA.	LGT	TYPE	WASHER
	MATERIAL: M270 GR 50W U.N.										
	ELECTRODES:										
	HOLE:										
	SHOP BOLTS:										
	SURFACE PREP. & PAINT:										
	-STEEL WITHIN 10'-0" OF ABUT 1 SHALL BE PAINTED (SEE GNI)										
	-ALL OTHER STEEL SHALL BE BLAST CLEANED AND LEFT UNPAINTED.										
	DESCRIPTION:	STRINGER - S3A									
	JOB:	BRIDGE NO. 435									
		I-89 SB OVER U.S. ROUTE 2									
		I-89 IMPROVEMENTS									
		TOWN OF MIDDLESEX-BOLTON, VERMONT									
	PROJ. NO.	IM-089-2(26)									
	CUSTOMER:	VERMONT AGENCY OF TRANSPORTATION									
	CASCO BAY STEEL STRUCTURES, INC.										
		75 SPRING HILL ROAD									
		SACO, MAINE 04072									
		PHONE (207) 282-7360									
		FAX (207) 282-1179									
	JOB NO.	116-435									
	DRG. NO.	103									
	REV.	△									