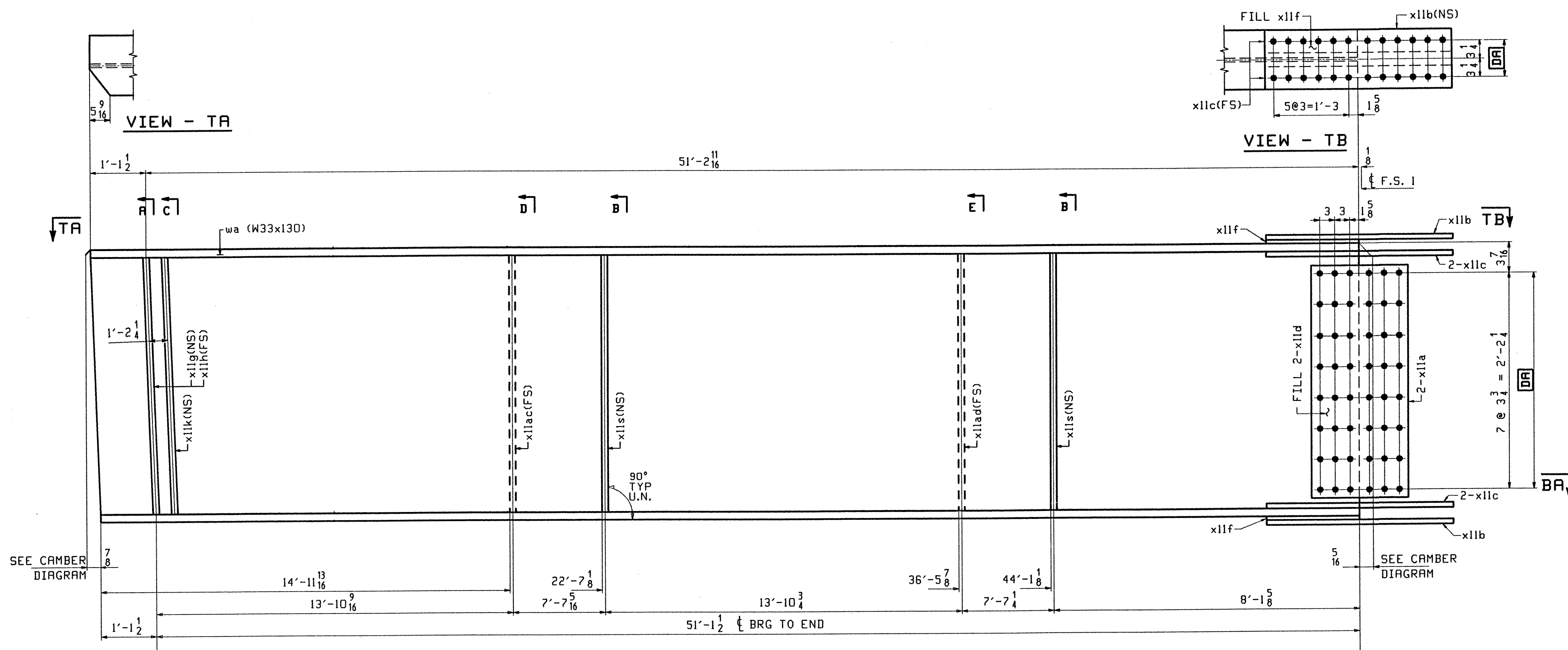
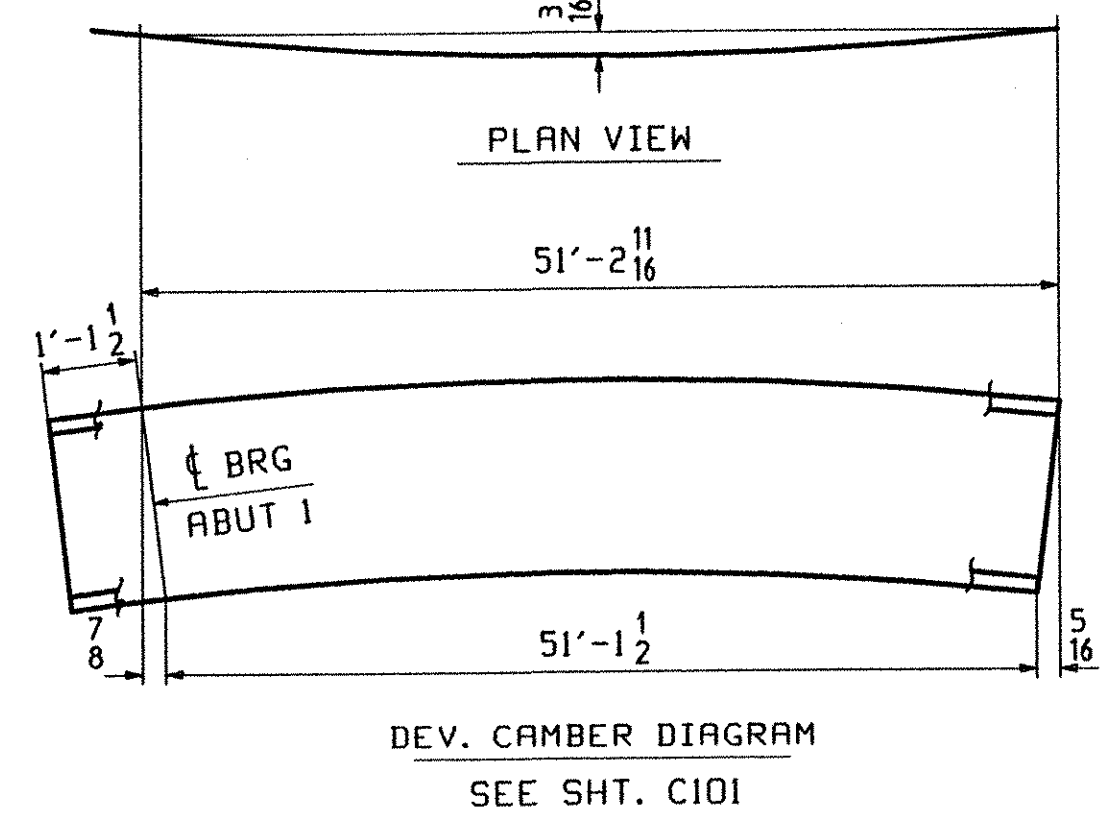
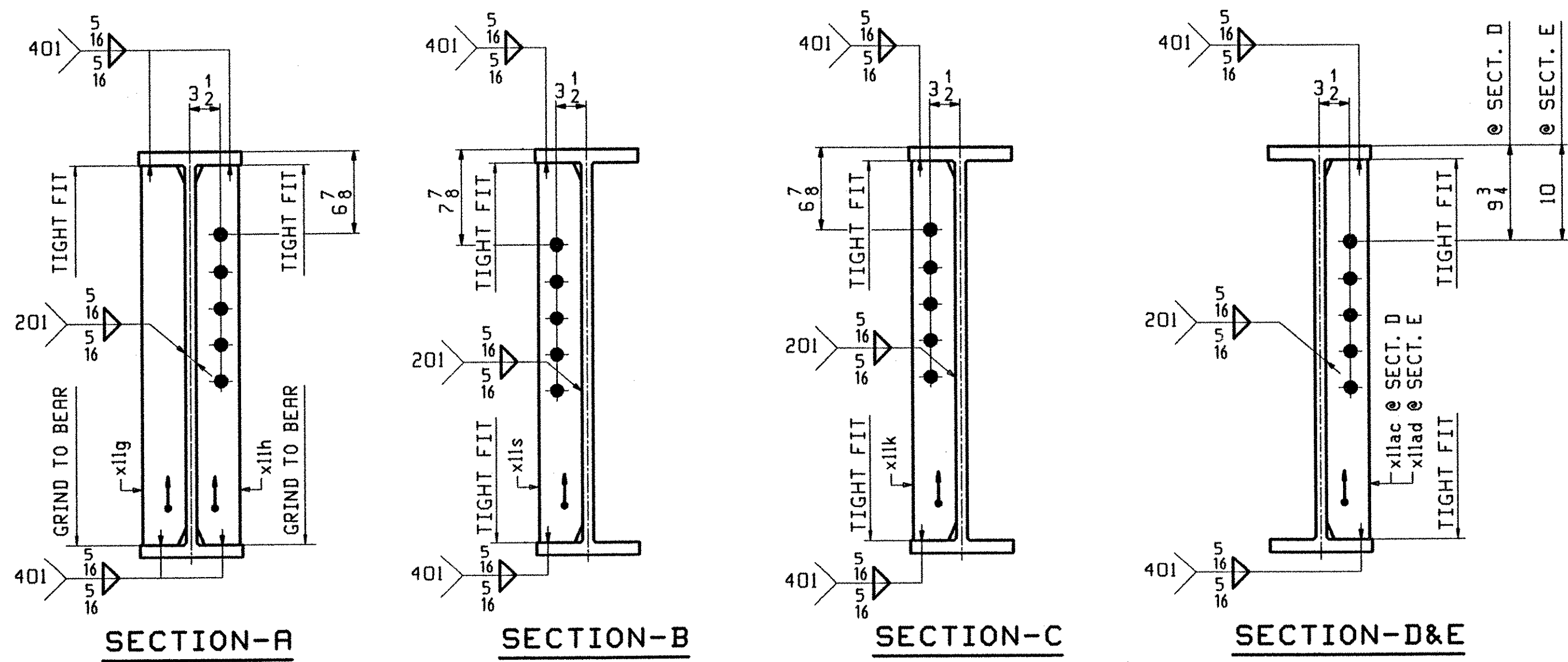
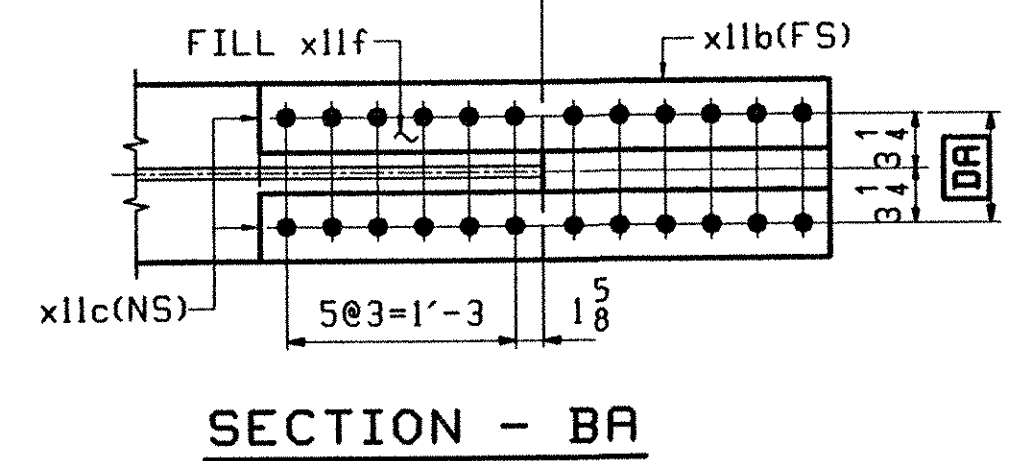


PAGE	LINE	MARK	QTY	MARK	MATERIAL	LENGTH		REMARKS	WT	PROCUREMENT NOTES
						FT	INCHES			
		S2A	1		STRINGER					7476
101	C		1	wa	W 33x130	52	4 3/8	(M270-50HT2) (H2-3)		
102	B		2	x11a	PL 2x29 1/2	1	7	(M270-50HT2) (H2-3)		
102	F		2	x11d	PL 16GA x 9 3/8	2	5 1/2	(A806-4) FILL		
102	C		2	x11b	PL 3/8 x 1 1/2	3	1	(M270-50HT2) (H2-3)		
102	D		4	x11c	PL 3/8 x 4 1/2	3	1	(M270-50HT2) (H2-3)		
102	G		2	x11f	PL 5/16 x 1 1/2	1	6 3/8	FILL		
102	K		1	x11g	PL 5/8 x 5	2	7 3/8			
102	K		1	x11h	PL 5/8 x 5	2	7 3/8			
102	K		1	x11k	PL 5/8 x 5	2	7 3/8			
102	M		1	x11ac	PL 1/2 x 5	2	7 3/8			
102	M		2	x11s	PL 2 x 5	2	7 3/8			
102	M		1	x11ad	PL 1/2 x 5	2	7 3/8			



ONE - STRINGER - S2A

1. FOR STRINGER STANDARD DETAILS SEE DRAWING XII.
2. FOR CAMBER AND FLANGE DIAGRAMS SEE DRAWING C101.
3. FOR GENERAL NOTES SEE DRAWING GNI.



TVGA
Engineering, Surveying, P.C.

NO EXCEPTIONS TAKEN REJECTED
 FURNISH AS CORRECTED
 REVISE AND RESUBMIT

ENGINEER has reviewed Shop Drawings and Samples and other data which Contractor is required to submit, and for conformance with the information given in the Contract Documents and compatibility with the design concept of the completed Project as a functioning whole as indicated in the Contract Documents. Such reviews do not extend to means, methods, techniques, sequences or procedures of construction or to safety precautions and programs incident thereto. Contractor is responsible for dimensions to be confirmed and controlled at the job site; for information that pertains solely to the fabrication processes or to techniques of construction; and for contribution of the work of all trades.

BY: *Pat W. S.T.*
DATE: 3/20/01

OUT FOR APPROVAL	2-2-01										
OUT FOR APPROVAL											
ISSUED TO SHOP											
FIELD & OFFICE											
REV.	REMARKS	DATE	DWN	CHK	APP	Q.A.	NO.	DIA.	LGT	TYPE	WASHER
MATERIAL:	M270 GR 50W U.N.	ELECTRODES:		HOLES:	15/16 Ø (UN)	SHOP BOLTS:	7/8 Ø (UN)				
SURFACE PREP. & PAINT: -STEEL WITHIN 10'-0" OF ABUT 1 SHALL BE PAINTED (SEE GNI) -ALL OTHER STEEL SHALL BE BLAST CLEANED AND LEFT UNPAINTED.											
DESCRIPTION: STRINGER - S2A										DRAWN BY	DATE
JOB: BRIDGE NO. 435 I-89 SB OVER U.S. ROUTE 2 I-89 IMPROVEMENTS TOWN OF MIDDLESEX-BOLTON, VERMONT										PHG	01/23
TENSOR 2106-S										TRM	01/27
PROJ NO. IM-089-2(26)										APPROV BY	
CUSTOMER: VERMONT AGENCY OF TRANSPORTATION										SUPERVISOR	H. J. GATTI
CASCO BAY STEEL STRUCTURES, INC.										Q.A.	
75 SPRING HILL ROAD SACO, MAINE 04072										JOB NO.	DRG. NO.
PHONE (207) 282-7360 FAX. (207) 282-1179										116-435	102
										REV.	△