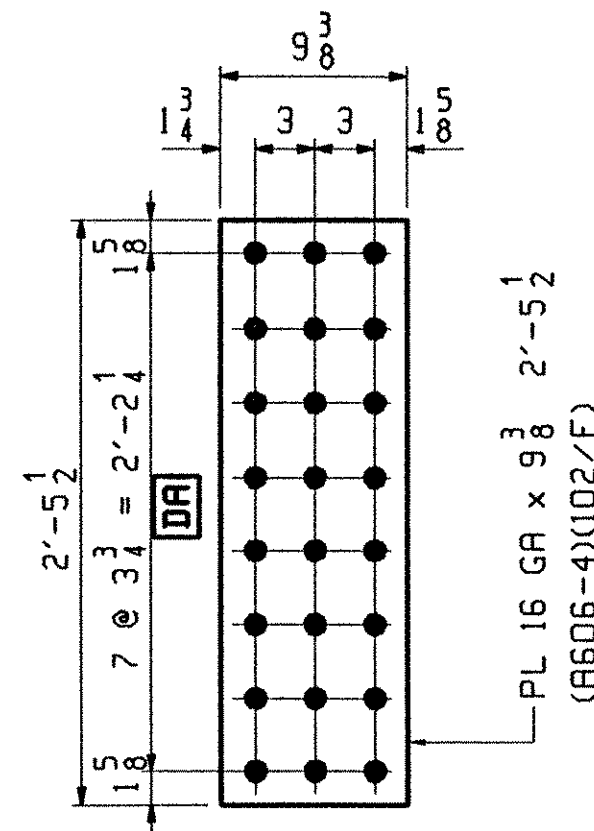
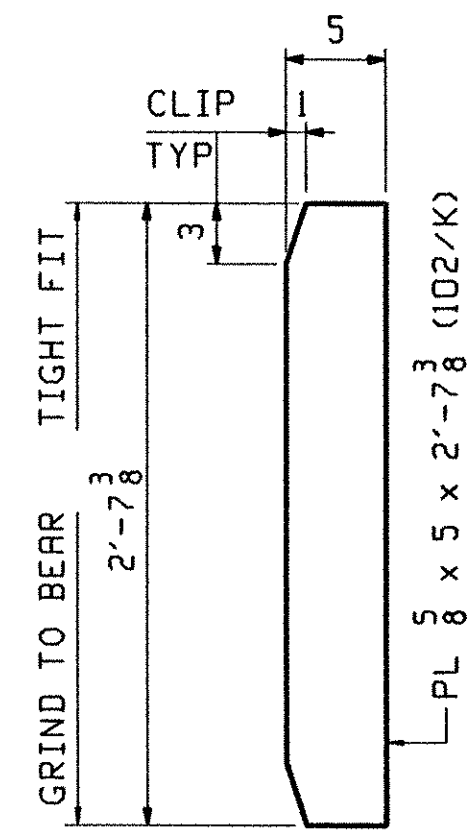


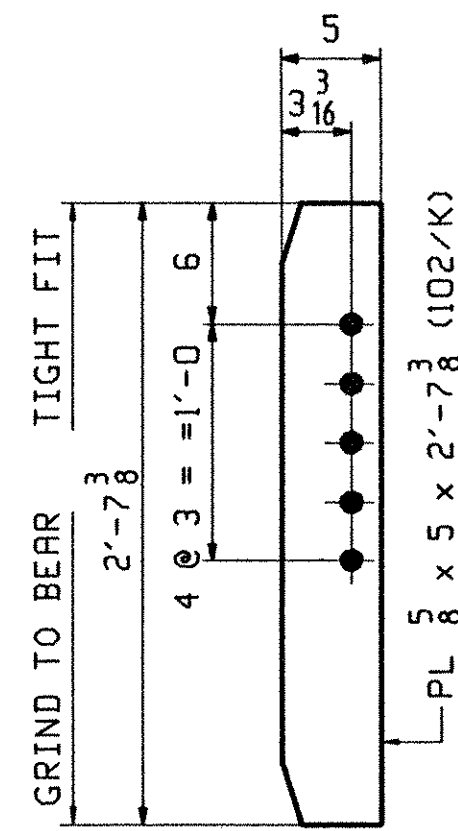
D.O.R.
20 ~ x11a



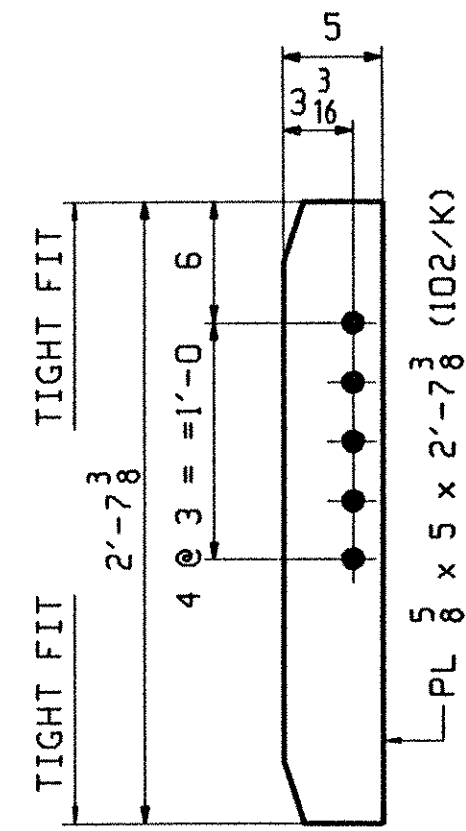
20 ~ x11d



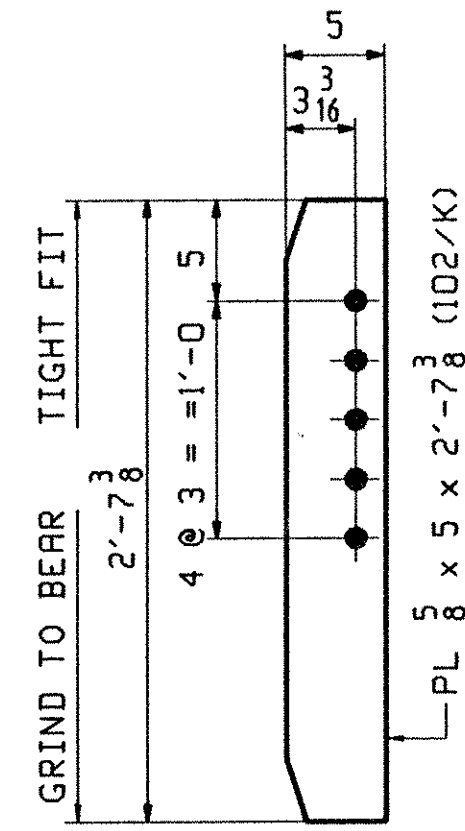
8 ~ x11g
BRG STIFF @
ABUT & PIER 2



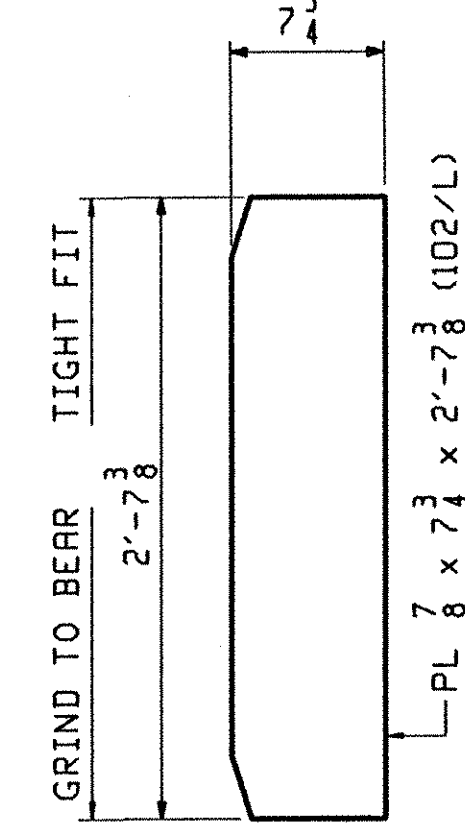
4 ~ x11h
BRG STIFF @ ABUT



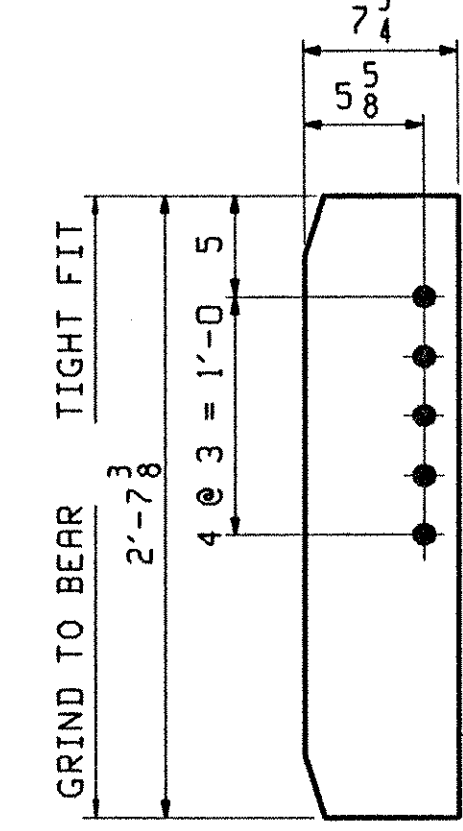
4 ~ x11k
ABUT CONN STIFF



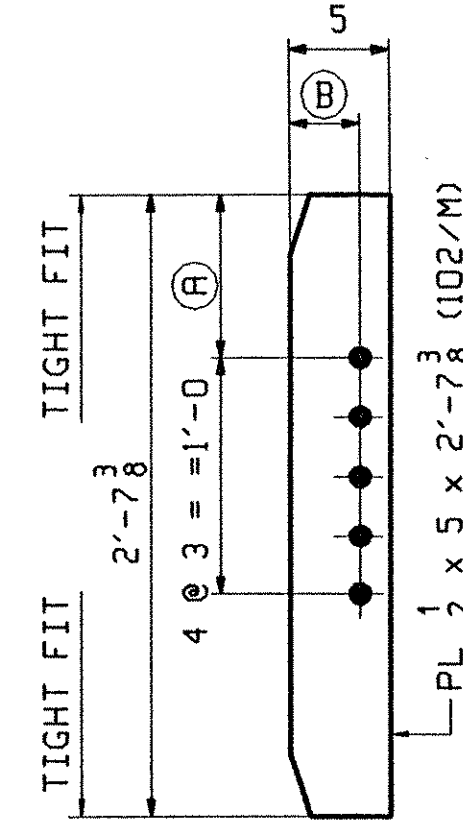
8 ~ x11m
BRG STIFF @ PIER 2



2 ~ x11n
BRG STIFF @ PIER 1

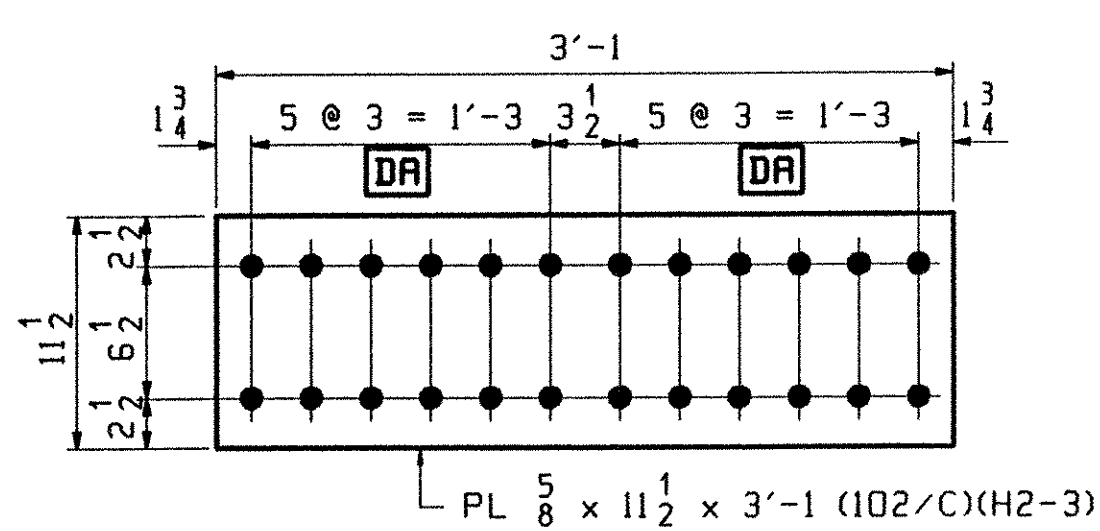


8 ~ x11p
BRG STIFF @ PIER 1

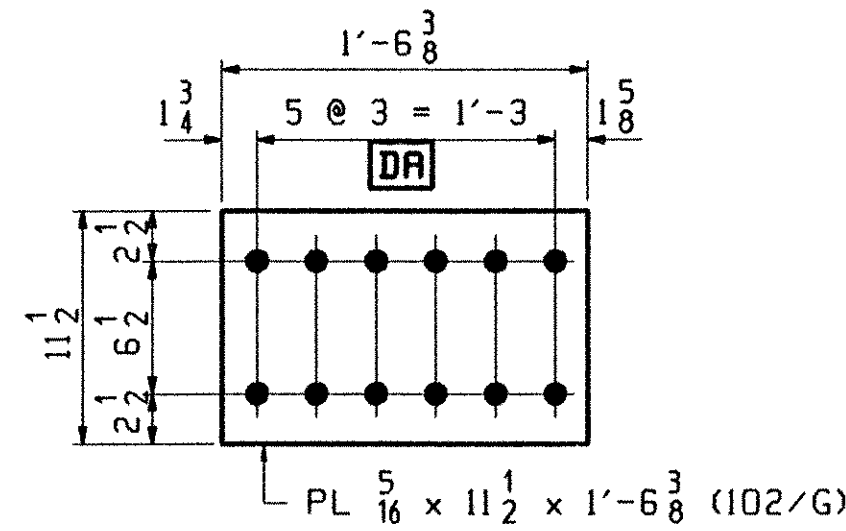


INT CONN STIFF

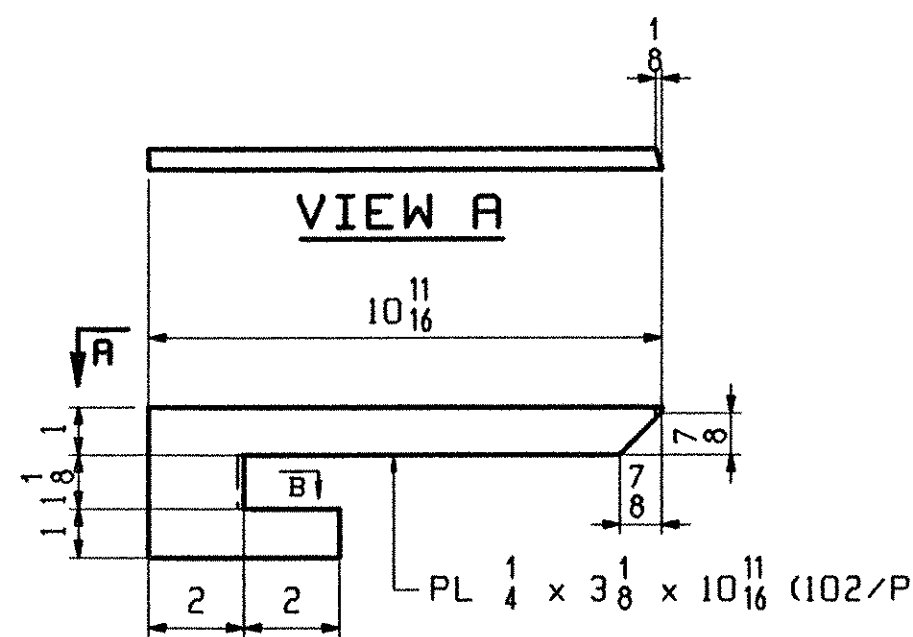
MARK	REQ'D	(A)	(B)
x11s	26	7	3 3/16
x11ab	4	8 1/2	3 3/16
x11ac	12	8 7/8	3 3/16
x11ad	8	9 1/8	3 3/16
x11af	2	9 3/8	3 3/16
x11ag	6	7	3 1/8
x11ah	4	8 7/8	3 1/8
x11ak	2	8 1/2	3 1/8



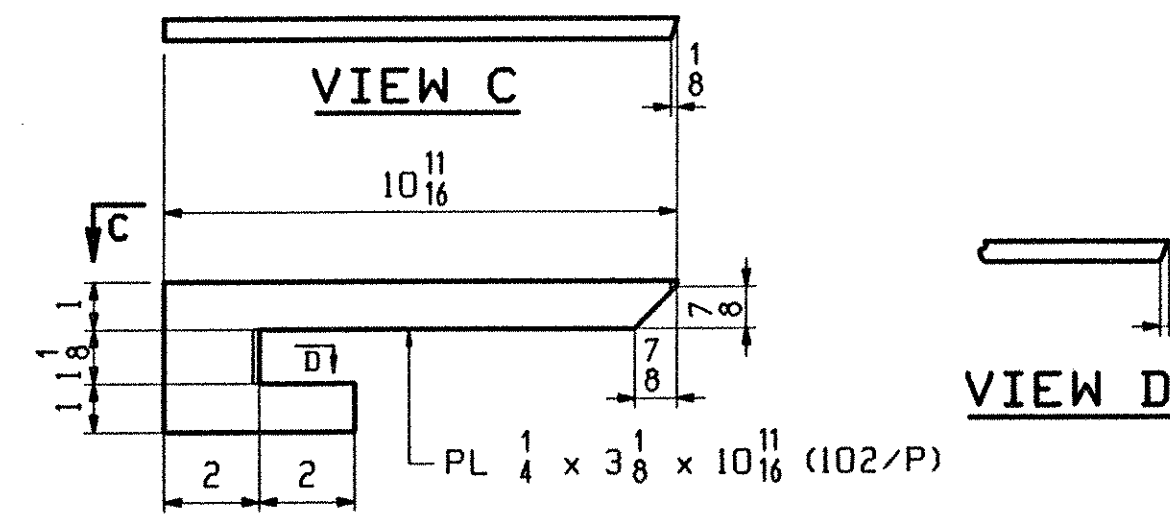
D.O.R.
20 ~ x11b



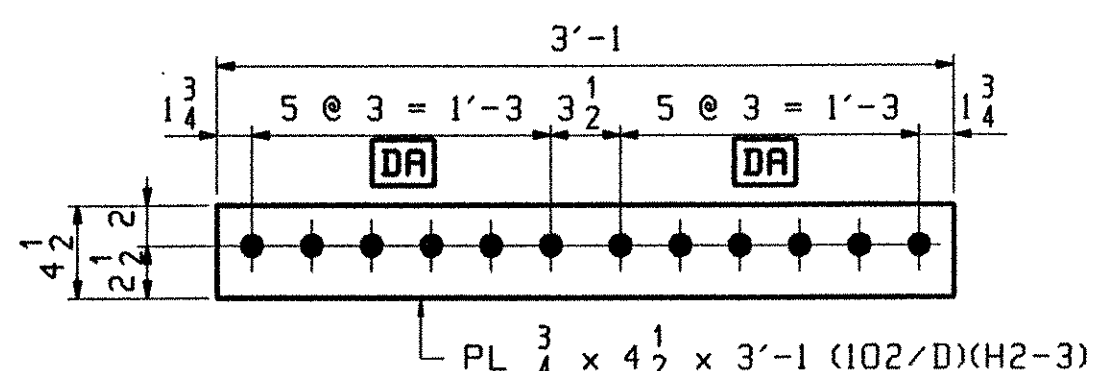
20 ~ x11f



1 ~ x11t
DRIP PL

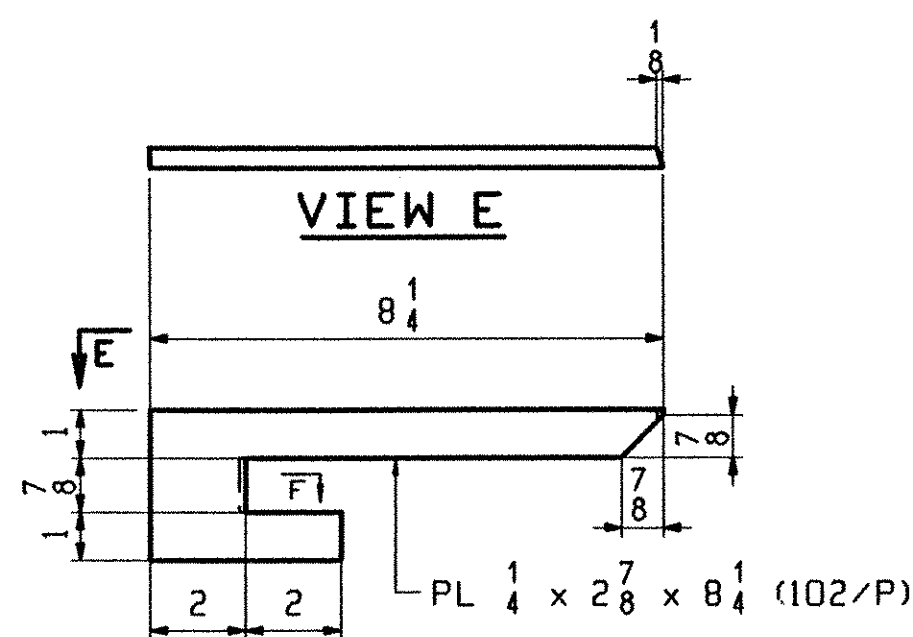


1 ~ x11v
DRIP PL

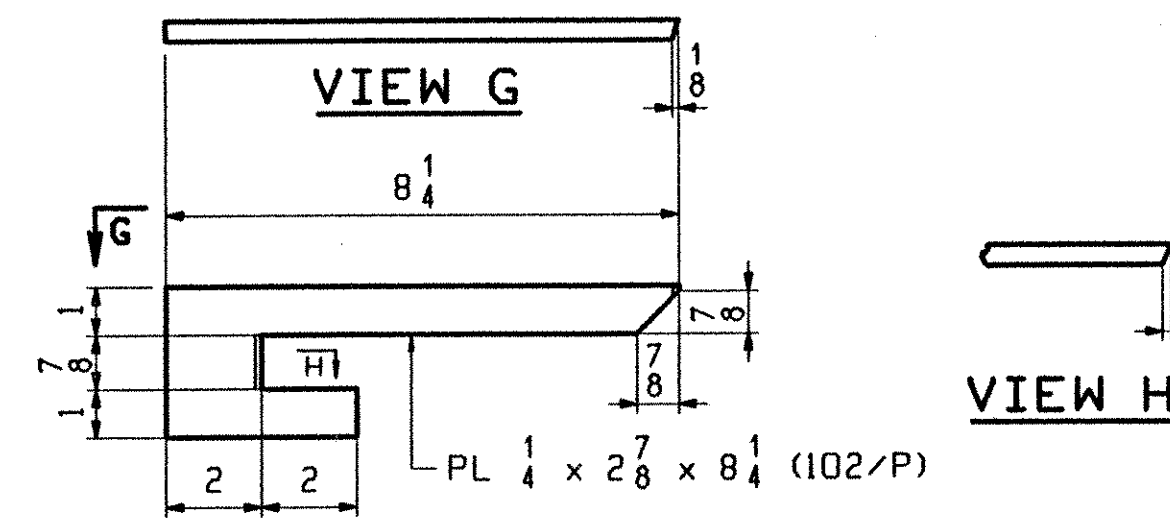


D.O.R.
40 ~ x11c

ENGR VERIFY WIDTH OF PL REDUCED TO CLEAR "K" OF W33 THICKNESS INCREASED TO 1/4" TO MAINTAIN NET SECTION



2 ~ x11w
DRIP PL



2 ~ x11aa
DRIP PL

TVGA
Engineering, Surveying, P.C.

NO EXCEPTIONS TAKEN REJECTED
 FURNISH AS CORRECTED REVISE AND RESUBMIT

ENGINEER has reviewed Shop Drawings and Samples and other data which Contractor is required to submit, only for conformance with the information given in the Contract Documents and compatibility with the design concept of the completed Project as a functioning whole as indicated in the Contract Documents. Such reviews do not extend to means, methods, techniques, sequences or procedures of construction or to safety precautions and programs incident thereto. Contractor is responsible for compliance to the confirmed and corrected at the job site, for information that pertains solely to the fabrication processes or to techniques of construction; and for coordination of the work of all trades.

BY: *[Signature]*
DATE: 3/20/01

NOTES:
FOR GENERAL NOTES SEE GNI
H2-3 DENOTES MATERIAL SUBJECT TO CHARPY V-NOTCH TESTING.
D.O.R. DENOTES DIRECTION OF MILL ROLLING

OUT FOR APPROVAL	2-2-01										
OUT FOR APPROVAL											
ISSUED TO SHOP											
FIELD & OFFICE											
REV.	REMARKS	DATE	DWN	CHK	APP	Q.A.	NO.	DIA.	LGT	TYPE	WASHER
MATERIAL:	M270 GR 50W U.N.										
ELECTRODES:											
HOLES:	15/16 Ø (UN)										
SHOP BOLTS:	7/8 Ø (UN)										
SURFACE PREP. & PAINT: -STEEL WITHIN 10'-0 OF ABUT 1 SHALL BE PAINTED (SEE GNI) -ALL OTHER STEEL SHALL BE BLAST CLEANED AND LEFT UNPAINTED.											
DESCRIPTION: STRINGER STANDARDS										DRAWN BY	DATE
JOB: BRIDGE NO. 435										PHG	01/22
I-89 SB OVER U.S. ROUTE 2										CHKD BY	
I-89 IMPROVEMENTS										TRM	01/26
TOWN OF MIDDLESEX-BOLTON, VERMONT										APPROV BY	
TENSOR 210E-S										SUPERVISOR	H. J. GATTI
PROJ NO. IM-089-2(26)										Q.A.	
CUSTOMER: VERMONT AGENCY OF TRANSPORTATION											
CASCO BAY STEEL STRUCTURES, INC.										JOB NO.	DRG. NO.
75 SPRING HILL ROAD										116-435	X11
PHONE (207) 282-7360										FAX.	(207) 282-1179
										REV.	△