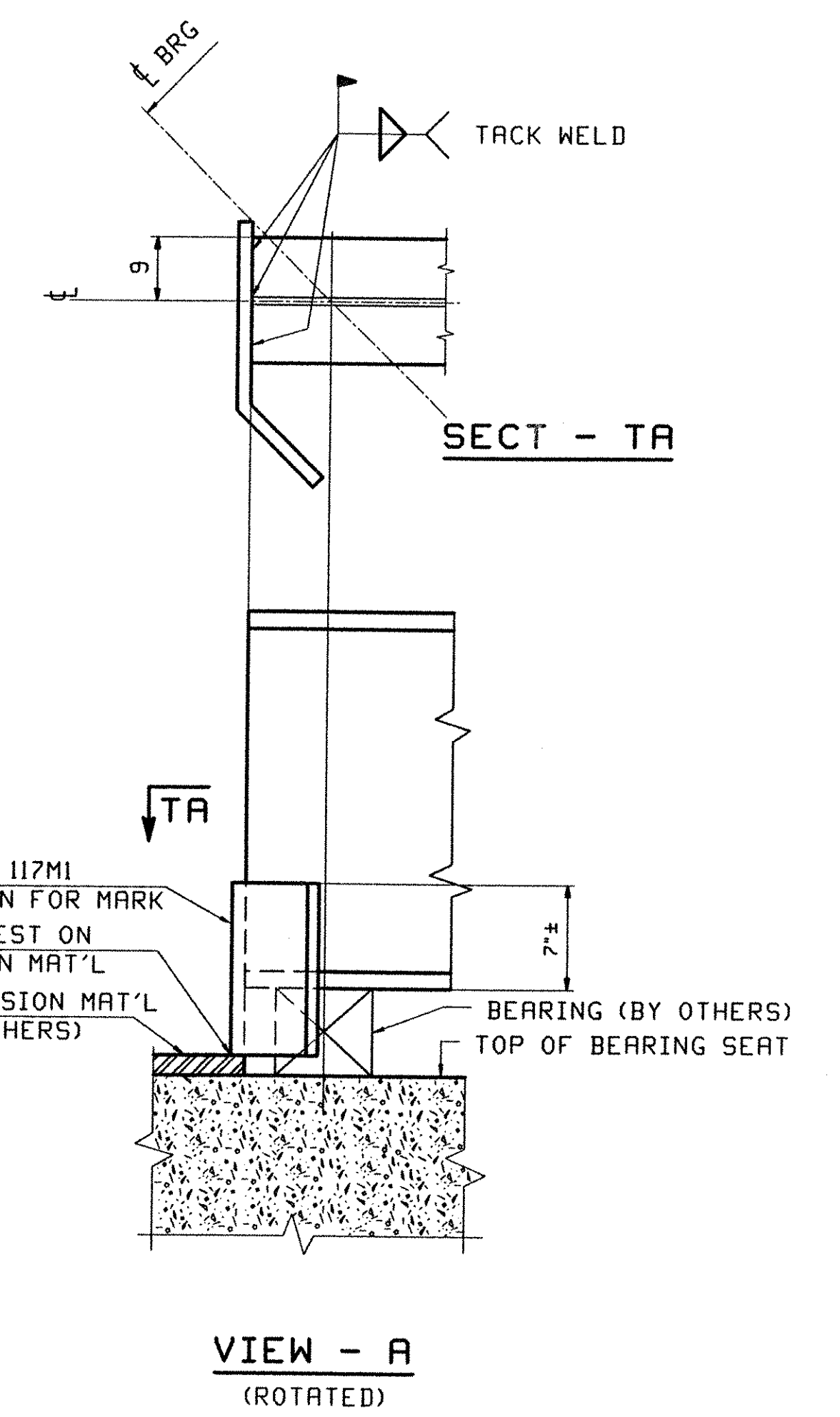


FRAMING PLAN



VIEW - A
(ROTATED)

| FIELD BOLT LIST | | | | A325 Type 3 BOLTS | | | | WASHER CODES | | PIECES CONNECTED AND REMARKS |
|-----------------|------------|-----------|-----------|-------------------|------------|--------|-----------------------------|--------------|-------------------------|------------------------------|
| LINE | NO. REV'D. | BOLT DIA. | BOLT LEN. | BOLTS OF CONN. | # OF CONN. | GRIP | THICKNESS OF PCS. CONNECTED | | | |
| 1 | | | | | | | | | FIELD SPLICES I&2 | |
| 2 | 480 | 7/8 | 4 | 24 | 20 | 2 1/2 | 3/4 | 1 5/8 | 1 TOP & BTM FLG SPLICE | |
| 3 | 480 | 7/8 | 3 | 48 | 10 | 1 1/16 | 1/2 | 1 1/16 | 1 WEB SPLICE | |
| 4 | | | | | | | | | | |
| 5 | | | | | | | | | INT. DIAPHRAGMS | |
| 6 | 320 | 7/8 | 2 1/4 | 5 | 64 | 1 5/16 | 1/2 | 7/16 | 1 WEB TO CONN PL | |
| 7 | | | | | | | | | | |
| 8 | | | | | | | | | BRG DIAPHRAGMS - ABUT 1 | |
| 9 | 40 | 7/8 | 2 1/2 | 5 | 8 | 1 1/8 | 1/2 | 5/8 | 1 GUSSET TO CONN PL | |
| 10 | 40 | 7/8 | 2 1/4 | 5 | 8 | 1 5/16 | 1/2 | 7/16 | 1 GUSSET TO WEB | |
| 11 | | | | | | | | | | |
| 12 | | | | | | | | | BRG DIAPHRAGMS - PIER 1 | |
| 13 | 40 | 7/8 | 2 3/4 | 5 | 8 | 1 3/8 | 1/2 | 7/8 | 1 GUSSET TO CONN PL | |
| 14 | | | | | | | | | | |
| 15 | | | | | | | | | BRG DIAPHRAGMS - PIER 2 | |
| 16 | 40 | 7/8 | 2 1/2 | 5 | 8 | 1 1/8 | 1/2 | 5/8 | 1 GUSSET TO CONN PL | |

WASHER CODES
1: 1 Hard Flat Washer

TVGA
Engineering, Surveying, P.C.

NO EXCEPTIONS TAKEN
 FURNISH AS CORRECTED
 REVISE AND RESUBMIT
 REJECTED

ENGINEER has reviewed Shop Drawings and Samples and other data which Contractor is required to submit, only for conformance with the information given in the Contract Documents and compatibility with the design concept of the completed Project as a functioning whole as indicated in the Contract Documents. Such review does not extend to means, methods, techniques, sequences or procedures of construction or to safety precautions and programs incident thereto. Contractor is responsible for dimensions to be confirmed and correlated at the job site; for information that pertains solely to the fabrication processes or to techniques of construction; and for coordination of the work of all trades.

BY: *P. W. S. J.*
DATE: 3/20/01

| | | | | | | | | | | | |
|--|---|--------------|-----|-------------|------------|-------------|----------|------|-----|------|--------|
| OUT FOR APPROVAL | 3/20/01 | | | | | | | | | | |
| OUT FOR APPROVAL | | | | | | | | | | | |
| ISSUED TO SHOP | | | | | | | | | | | |
| FIELD & OFFICE | | | | | | | | | | | |
| REV. | REMARKS | DATE | DWN | CHK | APP | Q.A. | NO. | DIA. | LGT | TYPE | WASHER |
| MATERIAL: | ELECTRODES: | HOLES: | | SHOP BOLTS: | | | | | | | |
| M270 GR 50W U.N. | | 15/16 Ø (UN) | | 7/8 Ø (UN) | | | | | | | |
| SURFACE PREP. & PAINT: -STEEL WITHIN 10'-0" OF ABUT 1 SHALL BE PAINTED (SEE GNI) -ALL OTHER STEEL SHALL BE BLAST CLEANED AND LEFT UNPAINTED. | | | | | | | | | | | |
| DESCRIPTION: | FRAMING PLAN | | | | DRAWN BY | DATE | | | | | |
| JOB: | BRIDGE NO. 43S I-89 SB OVER U.S. ROUTE 2 I-89 IMPROVEMENTS TOWN OF MIDDLESEX-BOLTON, VERMONT | | | | PHG | 01/25 | | | | | |
| TENSOR 2106-S | | | | | CHKD BY | 01/27 | | | | | |
| PROJ NO. | IM-089-2(26) | | | | APPROV BY | | | | | | |
| CUSTOMER: | VERMONT AGENCY OF TRANSPORTATION | | | | SUPERVISOR | H. J. GATTI | | | | | |
| CASCO BAY STEEL STRUCTURES, INC. | 75 SPRING HILL ROAD SACO, MAINE 04072 | | | | JOB NO. | 116-43S | DRG. NO. | E102 | | | |
| PHONE (207) 282-7360 | FAX. (207) 282-1179 | | | | REV. | △ | | | | | |