

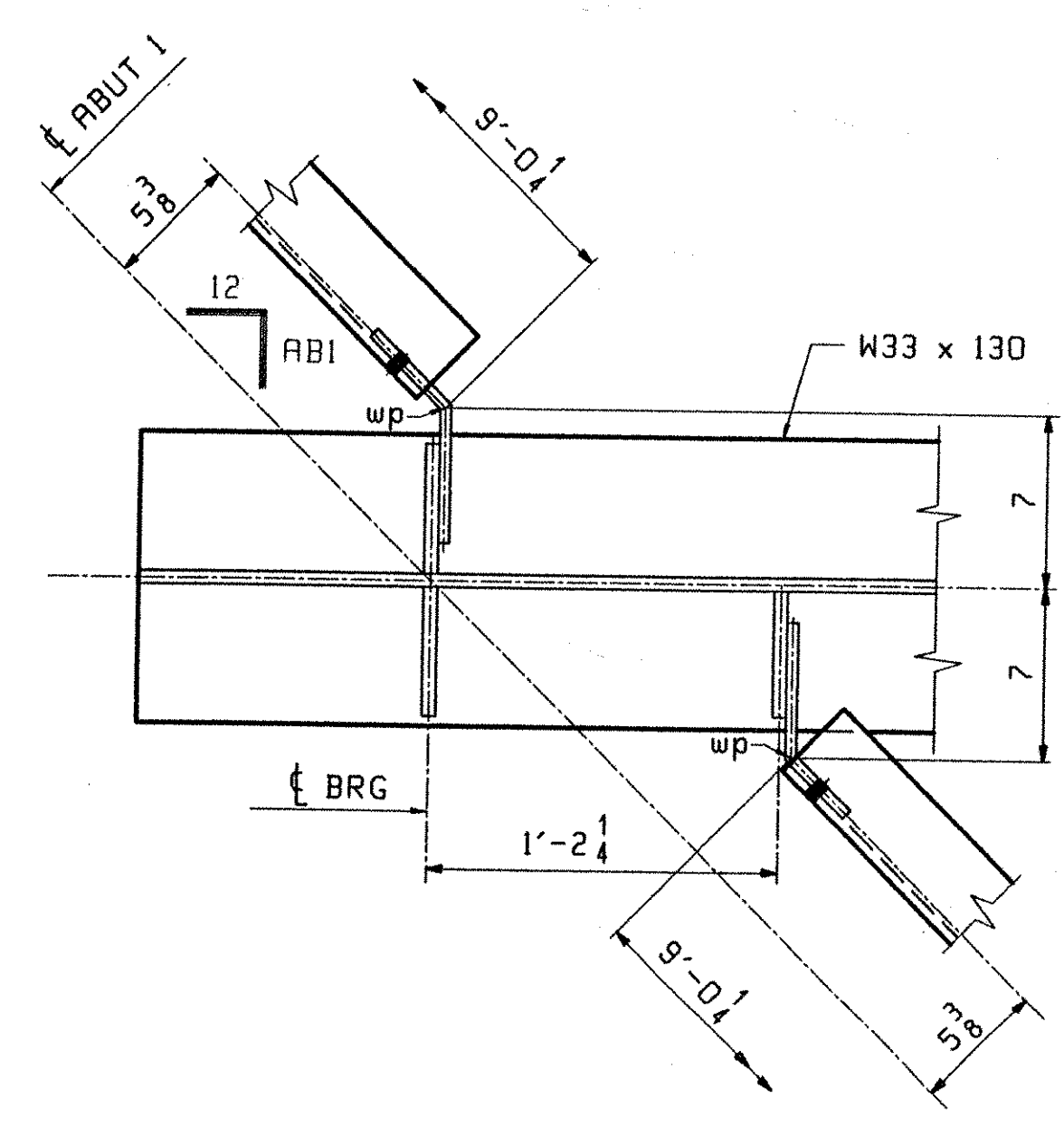
**CALCULATION PLAN**

Line	DEVELOPED LENGTHS ALONG BTM OF STRINGER					GRADE		BEVELS	
	LEN A	LEN BL	LEN B	LEN CL	LEN C	ABUT 1	Pier 1	ABI	PI
1	51'-1 15/16	22'-0 3/16	43'-3 5/16	62'-11	105'-8 9/16	-.0153	-.0218	11 13/16	11 7/8
2	51'-1 5/8	22'-0 3/16	43'-3 5/16	62'-10 11/16	105'-8 1/16	-.0157	-.0224	11 13/16	11 7/8
3	51'-1 3/8	22'-0 3/16	43'-3 5/16	62'-10 3/8	105'-7 9/16	-.0160	-.0228	11 13/16	11 7/8
4	51'-1 1/16	22'-0 3/16	43'-3 5/16	62'-10	105'-7 1/8	-.0164	-.0231	11 13/16	11 15/16
5	51'-0 13/16	22'-0 3/16	43'-3 5/16	62'-9 3/4	105'-6 5/8	-.0167	-.0238	11 7/8	11 15/16

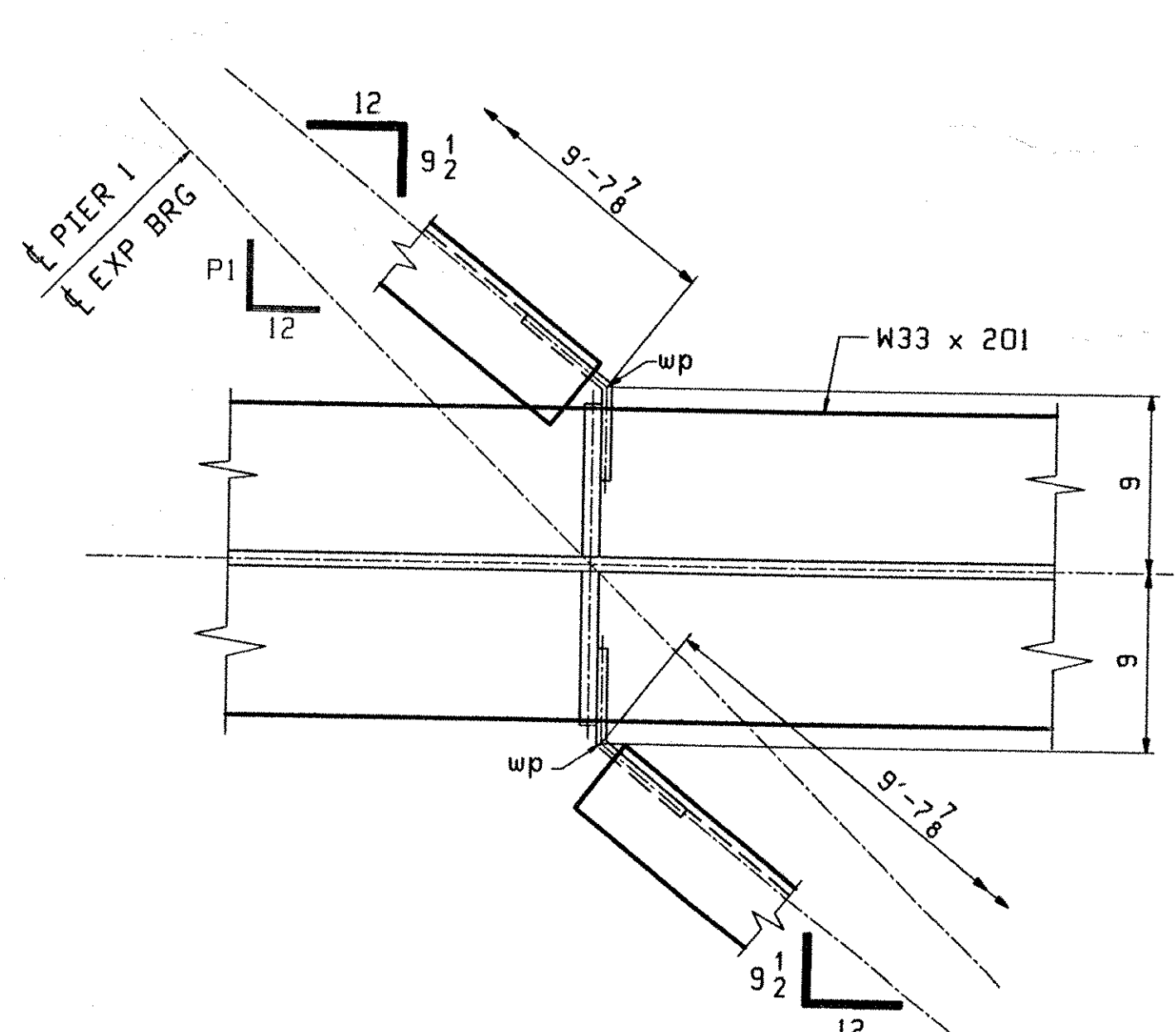
TVGA  
Engineering, Surveying, P.C.

NO EXCEPTIONS TAKEN  REJECTED  
 FURNISH AS CORRECTED  REVISE AND RESUBMIT  
 ENGINEER has reviewed Shop Drawings and Samples and other data which Contractor is required to submit, only for conformance with the information given in the Contract Documents and compatibility with the design concept of the completed Project as a functioning whole as indicated in the Contract Documents. Such reviews do not extend to means, methods, techniques, sequences or procedures of construction or to safety precautions and programs incident thereto. Contractor is responsible for dimensions to be confirmed and controlled at the job site, for information that pertains solely to the fabricator's processes or to techniques of construction and for coordination of the work of all trades.

BY: *[Signature]*  
DATE: 3/20/14



DIAPHRAGM WORKPOINTS @ ABUT 1



DIAPHRAGM WORKPOINTS @ PIER 1

**\*\* NOTE \*\***  
 THE PURPOSE OF THIS DRAWING IS TO COORDINATE GEOMETRIC CONTROL INFORMATION. THIS DNG IS SUBMITTED FOR INFORMATION ONLY AND IS NOT INTENDED FOR SHOP FABRICATION.

- NOTES
1. LONGITUDINAL DIMENSIONS ARE SLOPING ALONG BOTT OF STRINGER WITH CORRECTIONS MADE FOR VERTICAL CURVE, GRADE & DL CAMBER (UN).
  2. TRANSVERSE DIMENSIONS ARE IN A HORIZ. PLANE (UN).
  3. ARROW POINTS TOWARDS LOW END OF MEMBER.
  4. ENDS OF STRINGERS AND BRG. STIFF'S ARE VERTICAL AFTER DL ROTATION.
  5. DIAPH STIFF & FIELD SPLICES ARE NORMAL TO GRADE.
  6. BOTT PT NUMBERS = TOP PT NUMBERS + 200.
  7. FOR LAYOUTS SEE DNG ID101.
  8. COMBINE CROSSFRAMES FOR DIFF IN DROPS OF +/- 1/8.
  9. CROSSFRAMES DROPS ARE CALCULATED IN THEIR FINAL POSITION.
  10. WP'S AT  $\frac{1}{2}$  OF BENT PLATE.

OUT FOR APPROVAL	3-2-14										
ISSUED TO SHOP											
FIELD & OFFICE											
REV.	REMARKS	DATE	DWN	CHK	APP	Q.A.	NO.	DIA.	LGT	TYPE	WASHER
MATERIAL:	M270 GR 50W	ELECTRODES:		HOLES:	15/16 $\phi$ (UN)	SHOP BOLTS:	7/8 $\phi$ (UN)				
SURFACE PREP. & PAINT: -STEEL WITHIN 10'-0 OF ABUT 1 SHALL BE PAINTED (SEE GNI) -ALL OTHER STEEL SHALL BE BLAST CLEANED AND LEFT UNPAINTED.											
DESCRIPTION: CALCULATION PLAN										DRAWN BY	DATE
JOB: BRIDGE NO. 43S										HL	01/11
I-89 SB OVER U.S. ROUTE 2										CHKD BY	
I-89 IMPROVEMENTS										WMJ	01/15
TOWN OF MIDDLESEX-BOLTON, VERMONT										APPROV BY	
TENSOR 2106-S										SUPERVISOR	H. J. GATTI
PROJ NO.	1M-089-2(26)	Q.A.									
CUSTOMER: VERMONT AGENCY OF TRANSPORTATION											
<b>CASCO BAY STEEL STRUCTURES, INC.</b>										JOB NO.	DRG. NO.
75 SPRING HILL ROAD										116-43S	WS101
PHONE (207) 282-7360										FAX.	(207) 282-1179
										REV.	$\Delta$