

**BEARING NOTES**

1. ALL MATERIALS USED IN THE FABRICATION OF THESE BEARINGS SHALL BE MADE IN THE U.S.A.
2. BEARINGS ARE TO BE SHIPPED AS COMPLETE UNITS, STEEL Banded, AND SHALL BE WRAPPED TO PROTECT FROM MOISTURE AND DIRT DURING TRANSIT AND STORAGE.
3. LOCATION OF FABRICATION PLANT - 70 SOUTH STREET WALPOLE, MA. 02081
4. COSMEC, INC. REPRESENTATIVE - MR. WILLIAM BURHOE (508) 668-6600
5. AT NO TIME MAY ANY BEARINGS BE DISASSEMBLED WITHOUT AUTHORIZATION FROM COSMEC, INC.
6. BEARINGS SHALL BE STORED IN A CLEAN, DRY, LEVEL UPRIGHT POSITION.
7. FOR SETTING DETAIL SEE SHEET 24 OF 307 ON CONTRACT DRAWINGS.

**MATERIALS**

STEEL - AASHTO M270 GRADE 50 ZINC METALIZED AND SEALED WITH AN APPROVED SEALANT.

STAINLESS STEEL - ASTM A.240 TYPE 304, #8 MIRROR FINISH  
STAINLESS STEEL BACKING PLATE- ASTM A.240 TYPE 304

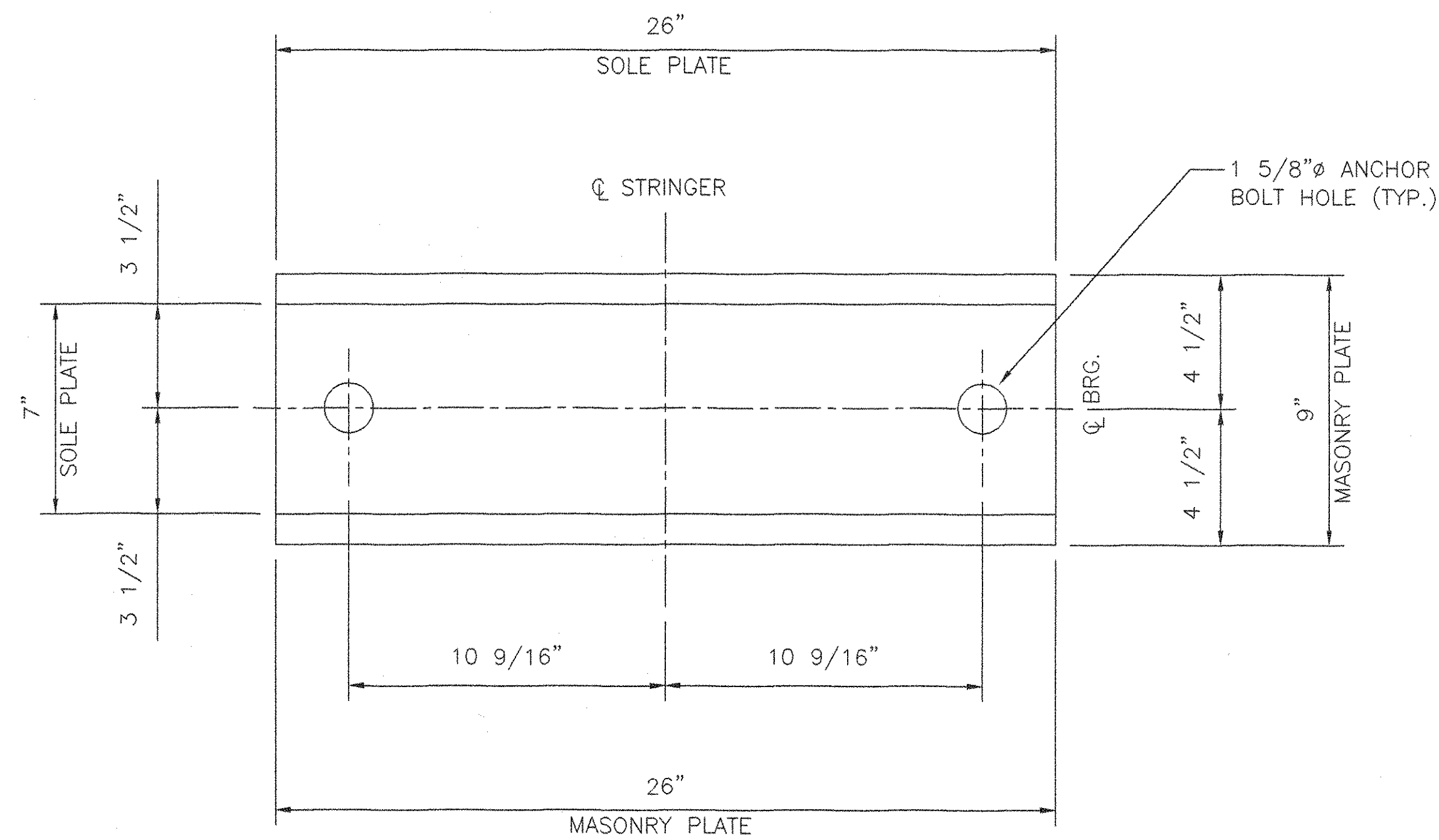
PREFORMED FABRIC PAD - AASHTO DIV. II SPEC. 18.4.10.1  
PTFE - ASTM D1457 (UNFILLED)

ELASTOMER- 60 DUROMETER NATURAL RUBBER GRADE 4  
THE AVERAGE SHEAR MODULUS (G) SHALL BE 150 P.S.I., WITH AN ALLOWABLE RANGE OF 127.5 TO 172.5 P.S.I.

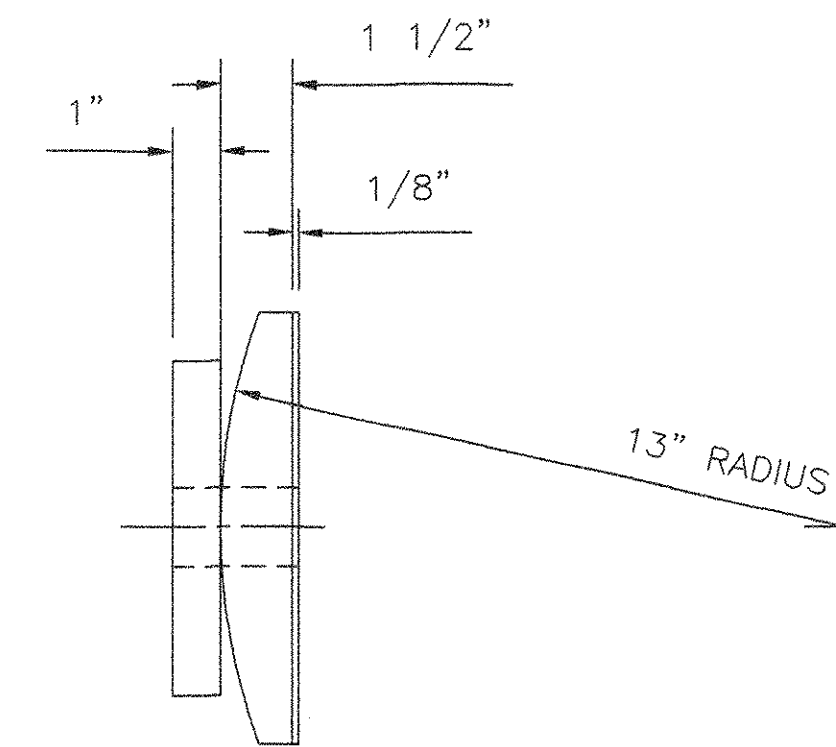
KEEPER PLATE BOLTS- AASHTO M164 TYPE 1  
ANCHOR BOLTS, NUTS & WASHERS - SEE DETAIL

ALL BEARINGS DEVICES SHALL BE METALIZED AS PER SUBSECTIONS 531.04(b) OR 506.15(C) & (b). BEARINGS SHALL BE SEALED WITH AN APPROVED SEALER AS SPECIFIED IN STANDARD SPEC. SUBSECTION 506.15(b). AREAS OF METALIZING DAMAGED BY FIELD WELDING OR HANDLING SHALL BE PAINTED WITH AN APPROVED SEALANT IN ACCORDANCE WITH STANDARD SPEC. SUBSECTION 708.02(d).

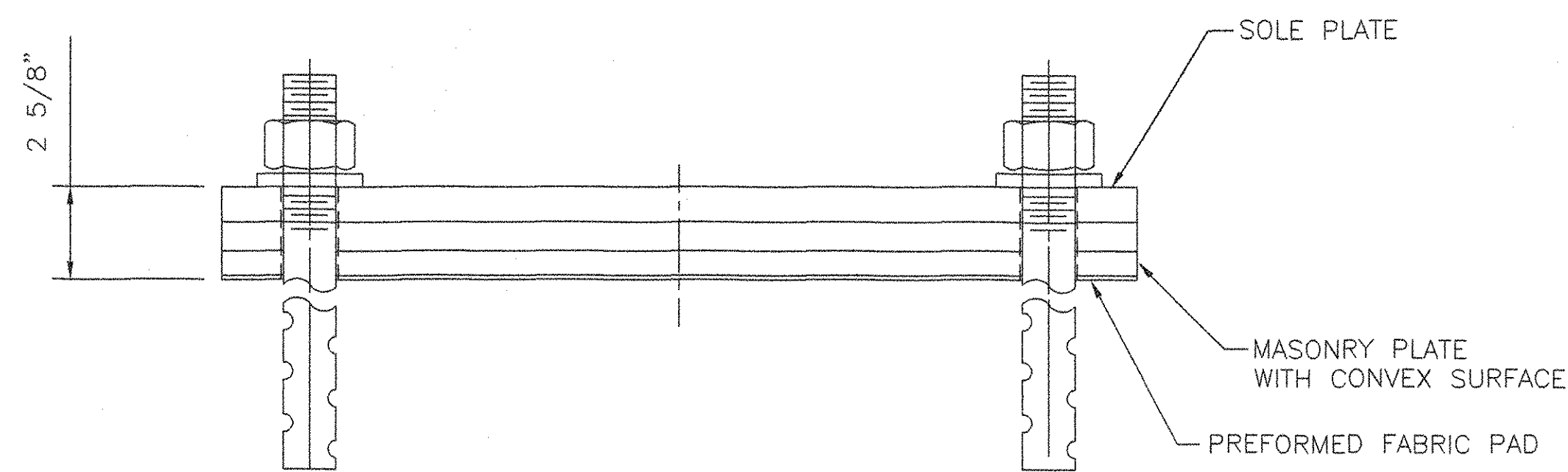
PRIOR TO GALVANIZING OR METALIZING, ALL CORNERS AND EDGES OF STEEL PLATES, SHAPES, ETC., SHALL BE GROUND TO A 1/16" RADIUS.



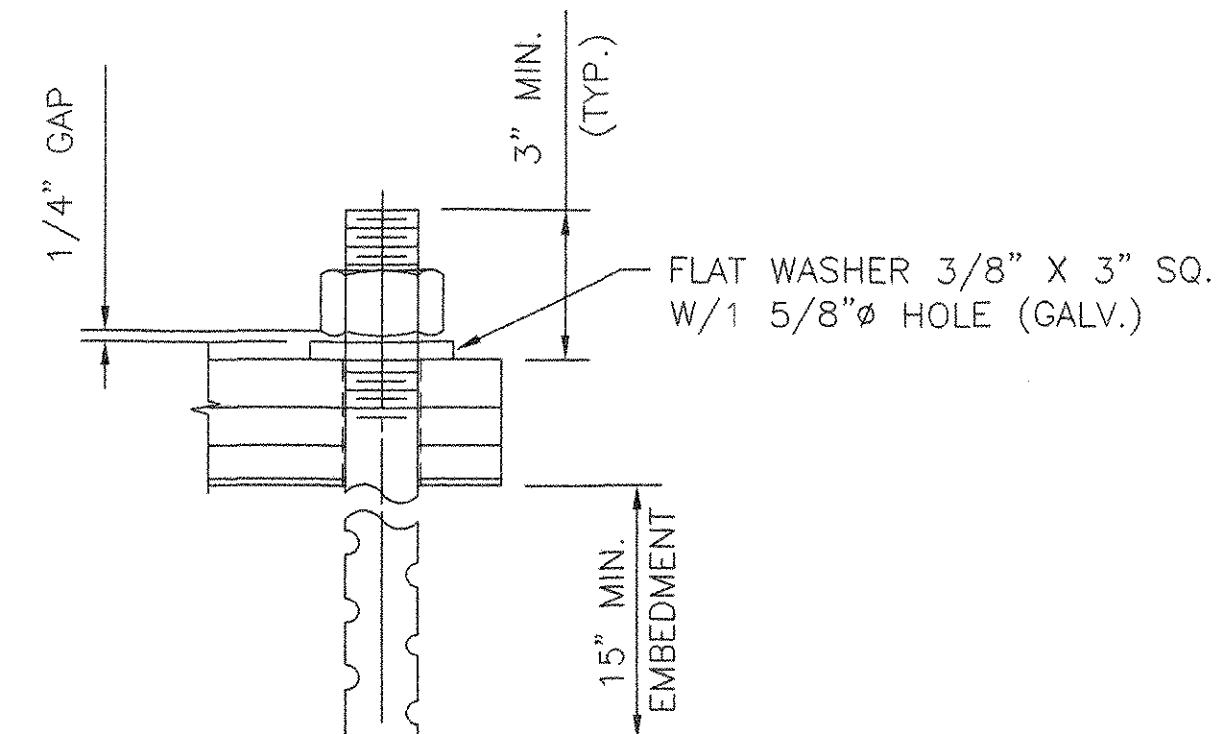
**PLAN**  
RADIAL BEARING  
QUANTITY: 4  
LOCATION: BRIDGE 49N & 49S  
ABUT. 1 STRINGER S1 & S7



**SIDE ELEVATION**



**FRONT ELEVATION**



**ANCHOR BOLT DETAIL**

1 1/4" SWEDGED ANCHOR BOLT WITH 5" OF THREAD (AASHTO M270 GRADE 36) WITH 1 HEAVY HEX NUT (TYP.) LEAVE A 1/4" GAP BETWEEN THE BOTTOM OF THE NUT AND THE TOP OF THE WASHER. ANCHOR BOLT THREADS SHALL BE BURRED TO PREVENT REMOVAL OF THE NUT. (TYP.)

**TVGA**  
Engineering, Surveying, P.C.  
 NO EXCEPTIONS TAKEN  REJECTED  
 FURNISH AS CORRECTED  
 REVISE AND RESUBMIT  
ENGINEER has reviewed Shop Drawings and Samples and other data which Contractor is required to submit, only for conformance with the information given in the Contract Documents and compatibility with the design concept of the completed Project as a functioning whole as indicated in the Contract Documents. Such reviews do not extend to means, methods, techniques, sequences or procedures of construction or to safety precautions and programs incident thereto. Contractor is responsible for dimensions to be confirmed and corrected at the job site; for information that pertains solely to the fabrication processes or to techniques of construction; and for coordination of the work of all trades.  
BY: P. W. S. T.  
DATE: 2/26/01

STATE OF VERMONT  
AGENCY OF TRANSPORTATION  
HIGHWAY NUMBER 1-89  
TOWN OF MIDDLESEX-BOLTON  
PROJECT # IM-089-2(26)

**COSMEC, INC.** 70 SOUTH STREET  
WALPOLE, MA. 02081

SCALE: 1/4" = 1" DRAWN BY: R.F.C. CHECKED BY: MCM  
DATE: 11-6-00 DATE: 11-27-00

**COSMEC RADIAL BEARINGS**

CUSTOMER: WINTERSET INC. S.O. NUMBER: 59184 DRAWING NUMBER: 3394 REV: 1

|        |           |         |               |           |       |
|--------|-----------|---------|---------------|-----------|-------|
| REV. 1 | MATERIALS | BY: RFC | DATE: 1/31/01 | CHK'D BY: | DATE: |
|--------|-----------|---------|---------------|-----------|-------|