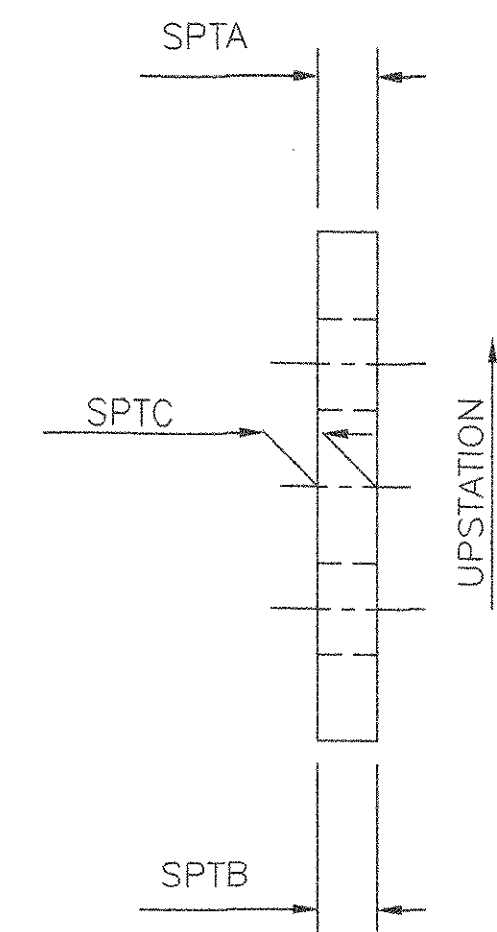
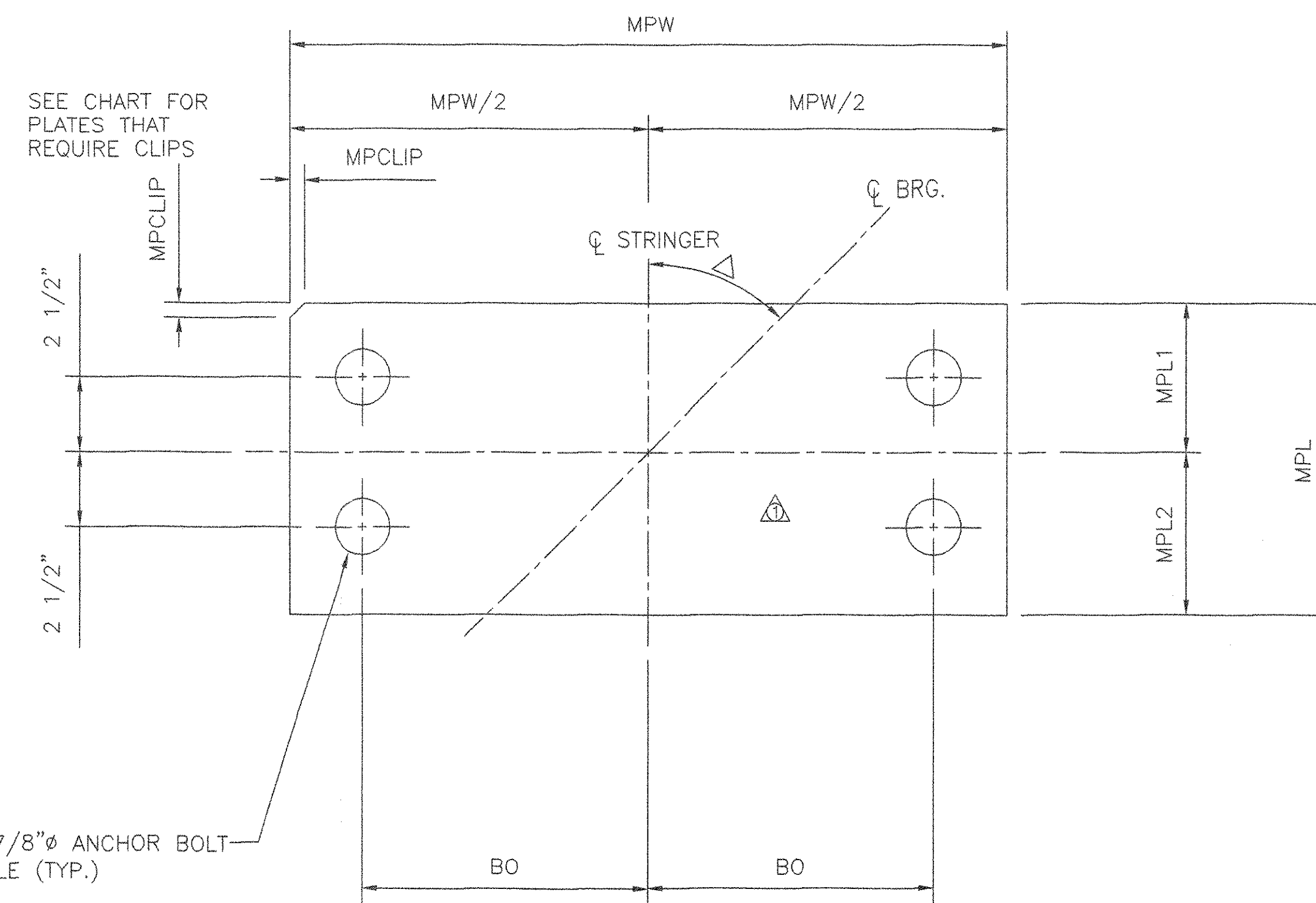


SOLE PLATE PLAN

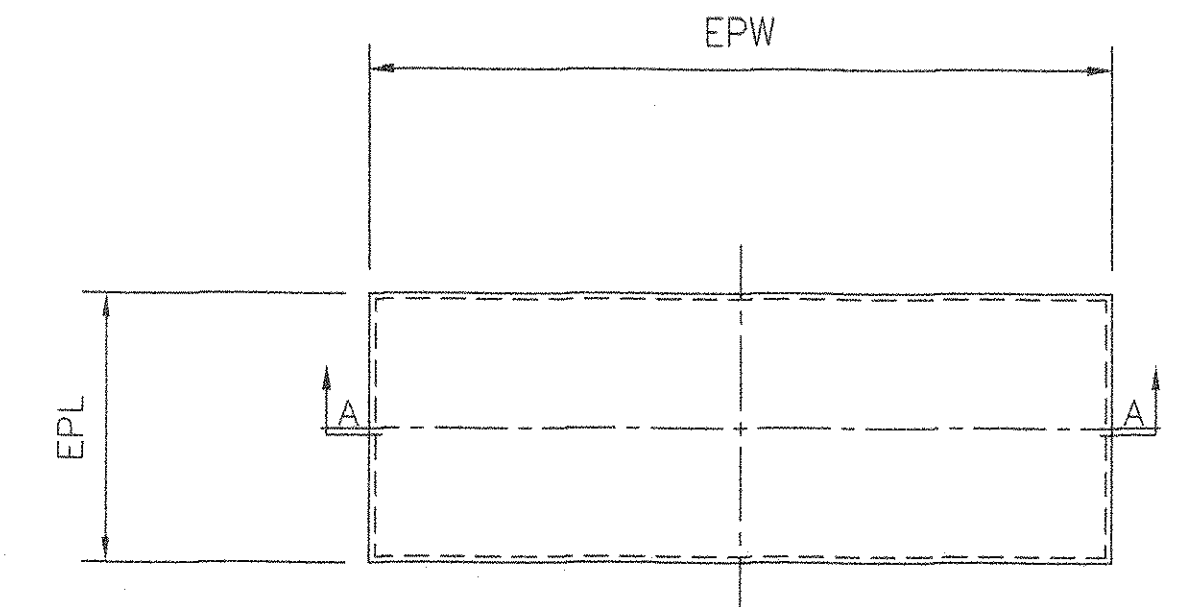


SOLE PLATE ELEVATION

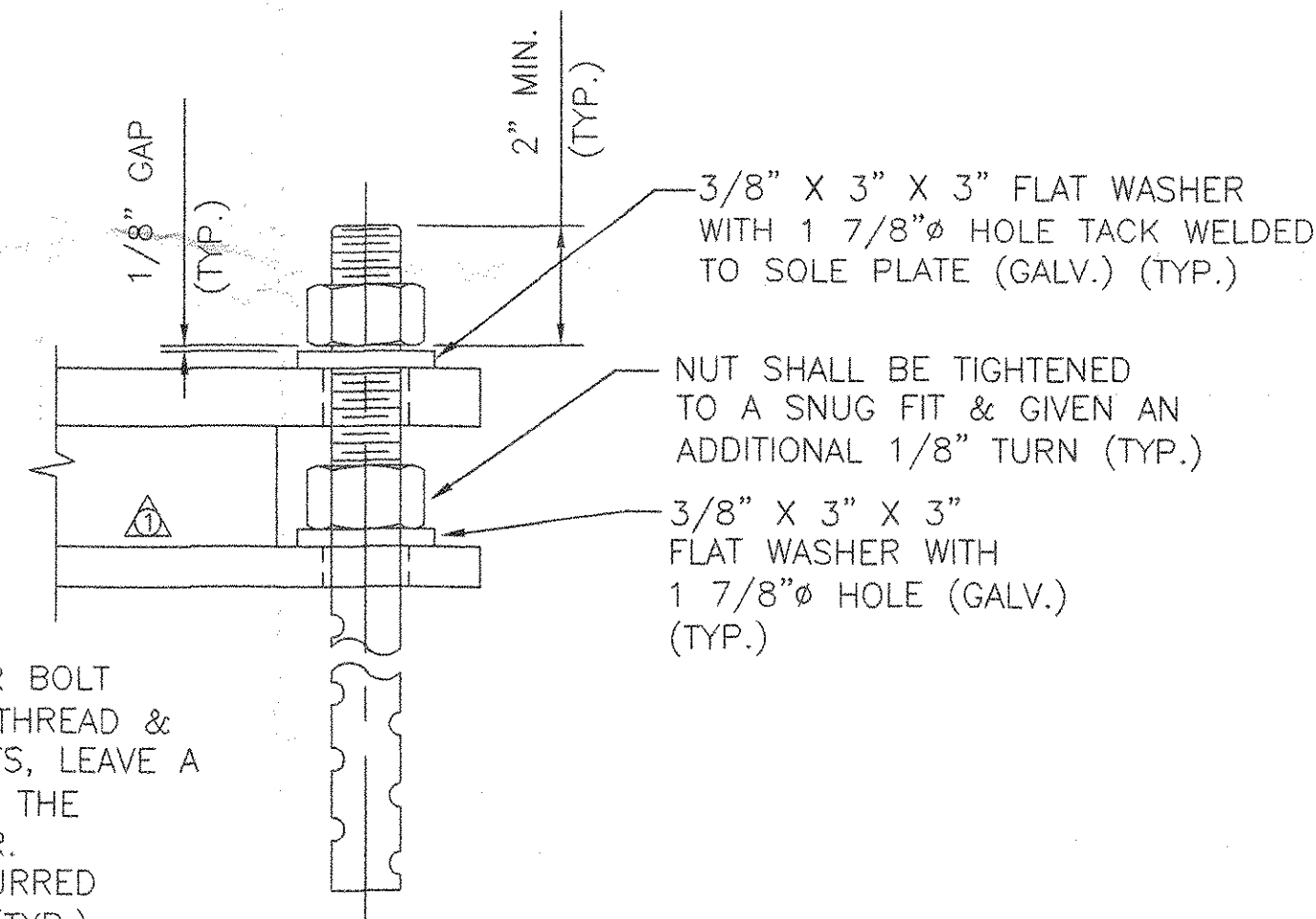
SEE CHART FOR BEVEL AND PLATE THICKNESS



MASONRY PLATE PLAN

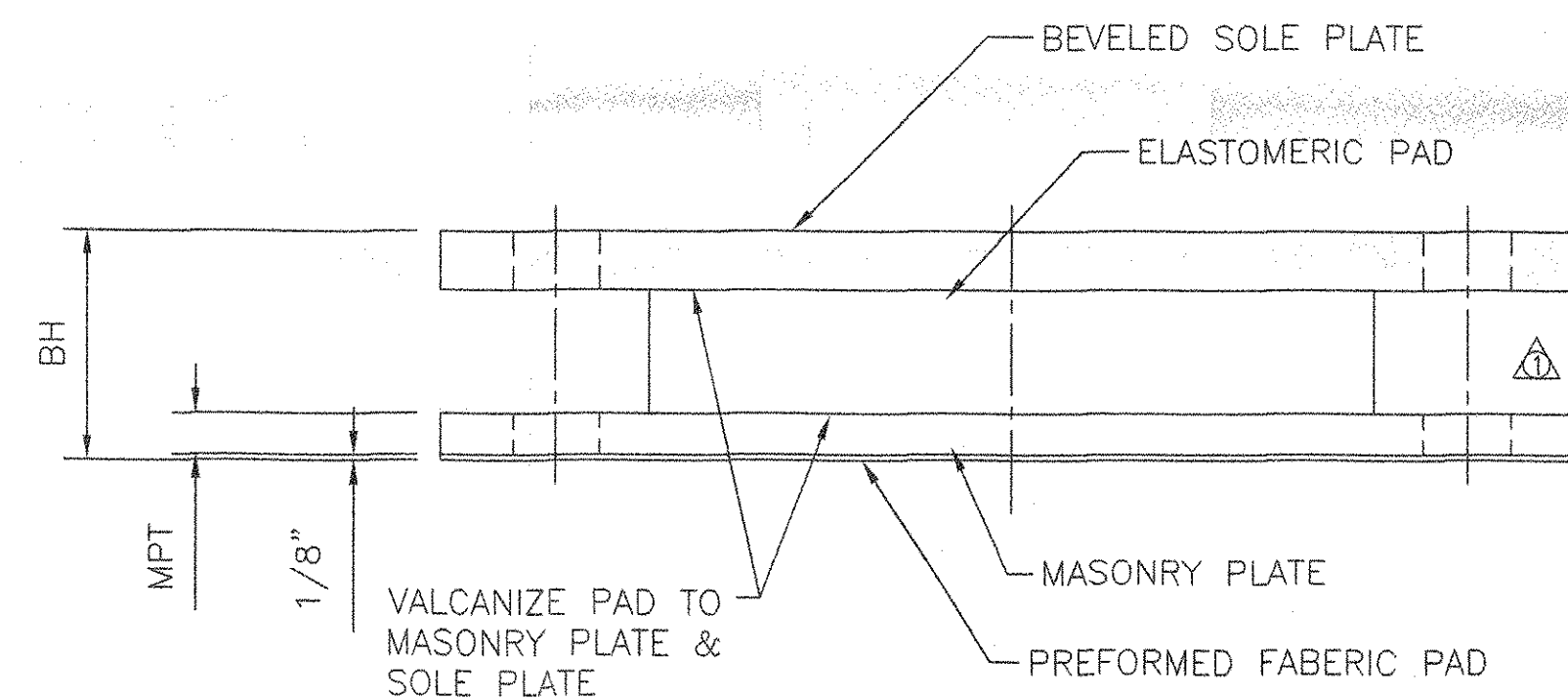


ELASTOMERIC PAD PLAN

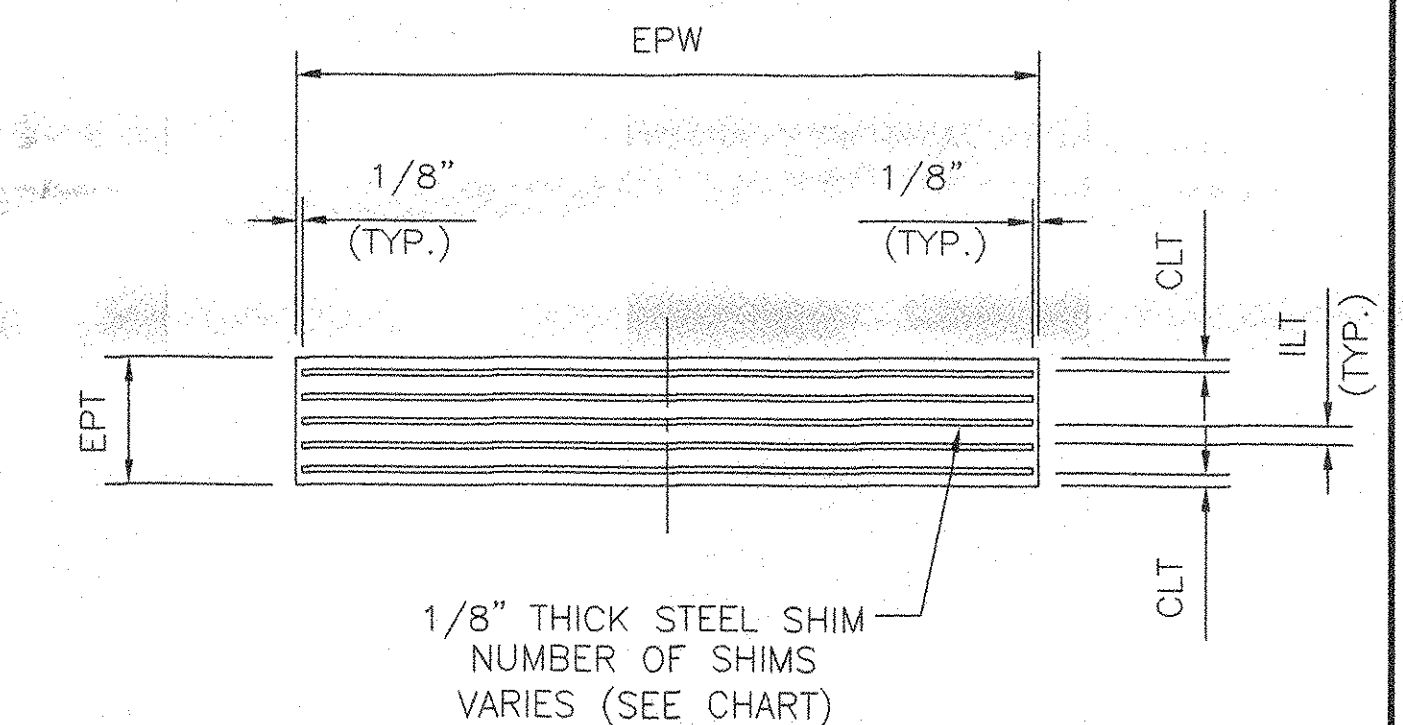


ANCHOR BOLT DETAIL

NEW 1 1/2" X BL SWEDGED ANCHOR BOLT (AASHTO M270 GRADE 36) WITH 11" OF THREAD & 2 HEAVY HEX NUTS. WHEN TIGHTENING NUTS, LEAVE A 1/8" GAP BETWEEN THE BOTTOM OF THE NUT & THE TOP OF THE WASHER. ANCHOR BOLT THREADS SHALL BE BURRED TO PREVENT REMOVAL OF THE NUT (TYP.) (ALL GALV.)



ELEVATION OF BEARING
FIXED ELASTOMERIC BEARING



SECTION A-A

QUANTITY	BEARING HEIGHT (BH) @ C	BRIDGE NO.	SUB-STRUCTURE NO.	△ ASKEW ANGLE	DIRECTION OF SKEW	FIXED BEARING TYPE	SOLE PLATE					MASONRY PLATE					ANCHOR BOLT			
							LENGTH (SPL)	WIDTH (SPW)	SPTA (UPSTATION)	SPTB (DOWNSTATION)	SPTC @ C	CORNER CLIP (SPCLIP)	MPL1	MPL2	MPL	WIDTH (MPW)	THICKNESS (MPT)	CORNER CLIP (MPCLIP)	OFFSET (BO)	LENGTH (BL)
ABUTMENT BEARINGS																				
5	4 3/4"	43N	ABUT. 1	44°42',11"	AHEAD RIGHT	AA	10 1/2"	24 1/2"	1"	1 1/4"	1 1/8"	3/4"	5"	5 1/2"	10 1/2"	24 1/2"	7/8"	1/2"	9 3/4"	23"
5	4 15/16"	43S	ABUT. 2	45°05',18"	AHEAD RIGHT	BB	10"	22"	3/4"	1 1/8"	15/16"	-----	5 3/4"	7 1/4"	13"	22"	3/4"	-----	8 1/2"	23"
5	5 1/16"	48N	ABUT. 1	66°34',38"	AHEAD LEFT	CC	13"	27 1/2"	7/8"	3/4"	13/16"	-----	5"	6 1/2"	11 1/2"	27 1/2"	1"	-----	11 1/4"	23"
5	5"	48S	ABUT. 2	62°21',09"	AHEAD LEFT	CC	10"	27 1/2"	3/4"	3/4"	3/4"	-----	5"	6 1/2"	11 1/2"	27 1/2"	1"	-----	11 1/4"	23"
5	5.03"	50N	ABUT. 1	44°11',07"	AHEAD RIGHT	AA	11"	26"	1 5/16"	1"	1.16"	1 3/4"	5"	5 1/2"	10 1/2"	26"	1 1/8"	1 1/4"	10 1/2"	23"
5	5"	50S	ABUT. 2	45°44',11"	AHEAD RIGHT	AA	10"	26"	1 1/4"	1"	1 1/8"	1 1/4"	5"	5 1/2"	10 1/2"	26"	1 1/8"	1 1/4"	10 1/2"	23"

STEEL REINFORCED ELASTOMERIC BEARING PAD									
QUANTITY	TEST PAD	FIXED BEARING TYPE	LENGTH (EPL)	WIDTH (EPW)	THICKNESS (EPT)	COVER LAYER THICKNESS (CLT)	INTERNAL LAYER THICKNESS (ILT)	NUMBER OF INTERNAL ELASTOMERIC LAYERS	NUMBER OF INTERNAL STEEL SHIMS
15	2	AA	5 1/2"	15 1/2"	2 5/8"	1/4"	3/8"	4	5
5	1	BB	9"	13"	3 1/8"	1/4"	1/2"	4	5
10	1	CC	7 1/2"	18 1/2"	3 1/8"	1/4"	1/2"	4	5

TVGA
Engineering, Surveying, P.C.

NO EXCEPTIONS TAKEN REJECTED
 FURNISH AS CORRECTED
 REVISE AND RESUBMIT

ENGINEER has reviewed Shop Drawings and Samples and other data which Contractor is required to submit, for conformance with the information given in the Contract Documents and compatibility with the design concept of the completed Project as a functioning whole as indicated in the Contract Documents. Such reviews do not extend to means, methods, techniques, sequences or procedures of construction or to safety precautions and programs incident thereto. Contractor is responsible for dimensions to be confirmed and corrected at the job site, for information that pertains solely to the fabrication processes or to techniques of construction for coordination of the work of all trades.

BY: *P. W. S. C.*
DATE: *2/26/01*

STATE OF VERMONT
AGENCY OF TRANSPORTATION

HIGHWAY NUMBER 1-89
TOWN OF MIDDLESEX-BOLTON
PROJECT # IM-089-2(26)

COSMEC, INC. 70 SOUTH STREET
WALPOLE, MA. 02081

SCALE: 1/4" = 1" DRAWN BY: R.F.C. CHECKED BY: MCM
DATE: 11-6-00 DATE: 11-22-00

COSMEC ELASTOMERIC BEARINGS

CUSTOMER: WINTERSET INC. S.O. NUMBER: 59184 DRAWING NUMBER: 3392 REV. 1

REV. 1 TEST PADS AND TOOK OUT KEEPER BY: RFC DATE: 1/31/01 CK'D BY: DATE: