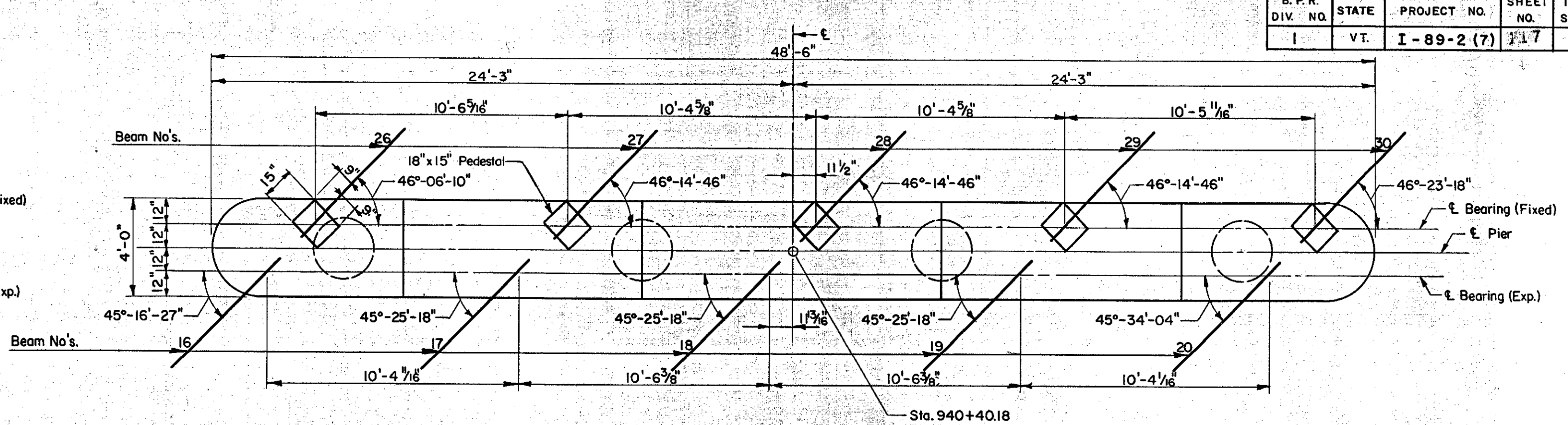
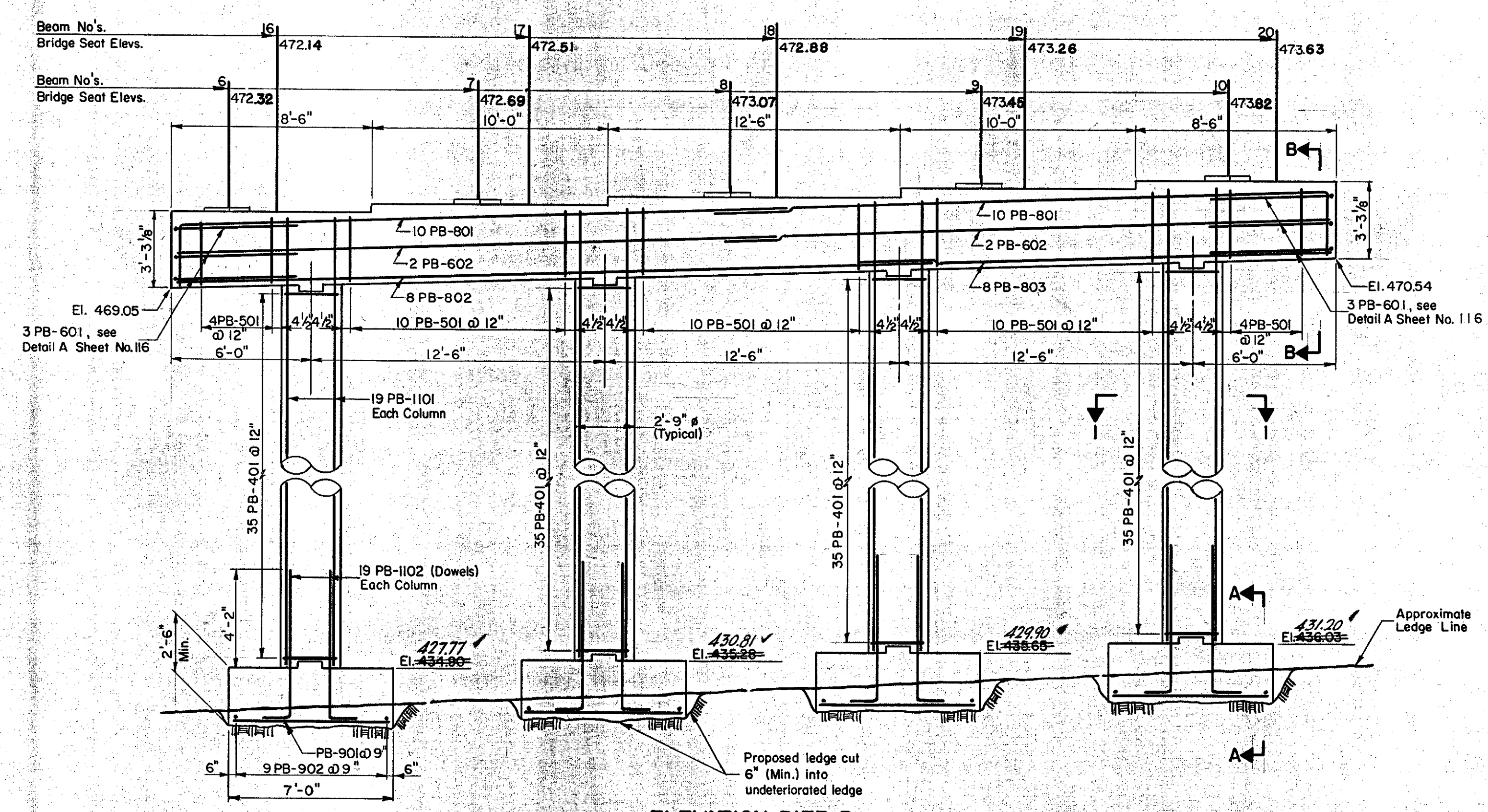


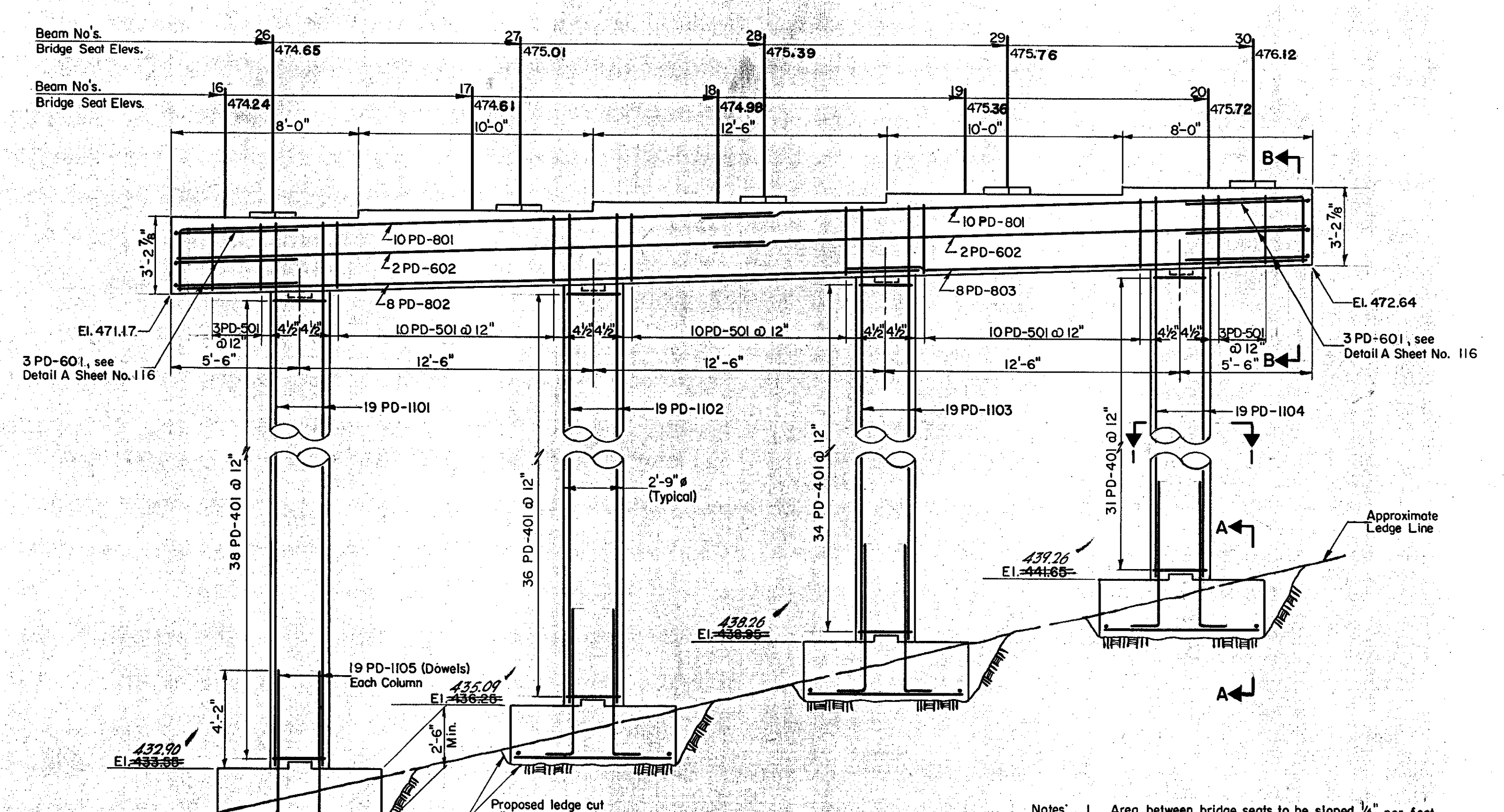
PLAN PIER B
Scale: 1/4" = 1'-0"



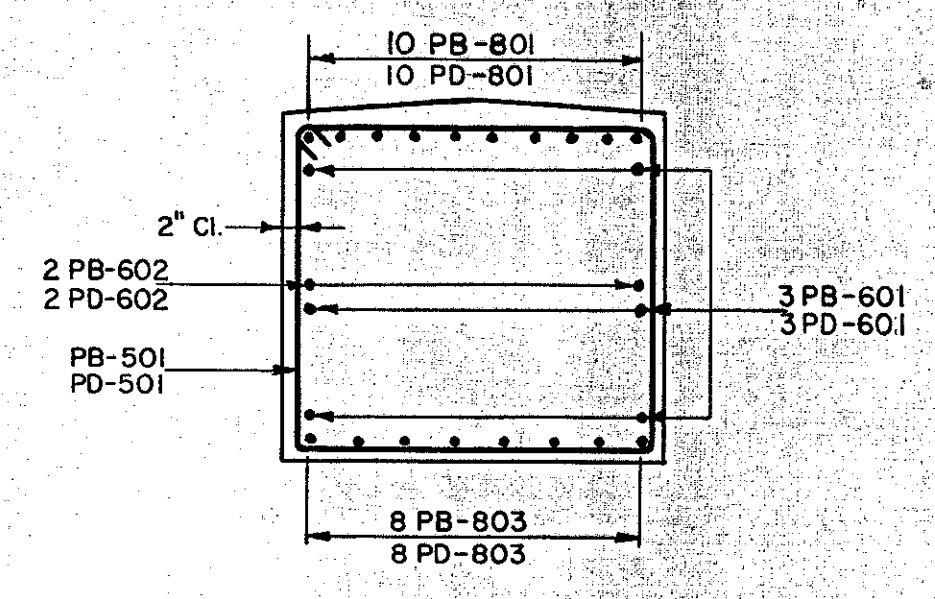
PLAN PIER D
Scale: 1/4" = 1'-0"



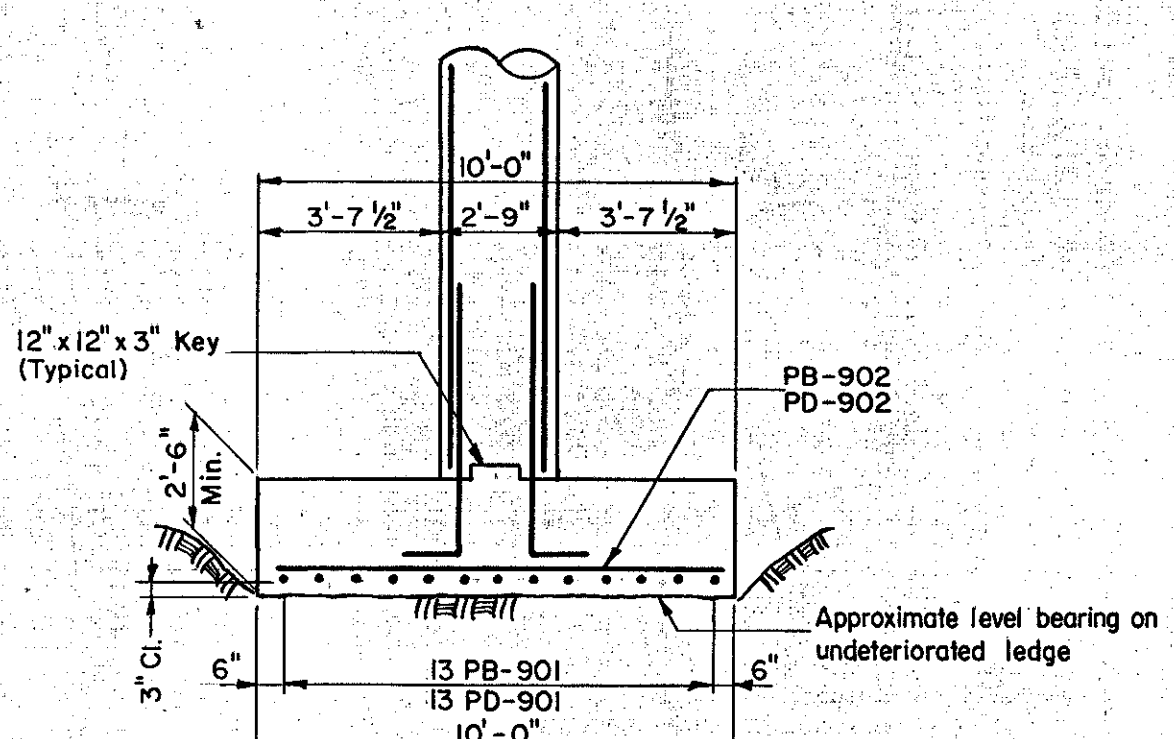
ELEVATION PIER B
Scale: 1/4" = 1'-0"



ELEVATION PIER D
Scale: 1/4" = 1'-0"



SECTION B-B
Scale: 1/2" = 1'-0"



SECTION A-A
Scale: 1/4" = 1'-0"

- Notes:
- Area between bridge seats to be sloped 1/4" per foot from $\bar{\epsilon}$ Pier. Bridge Seats to be covered with 1/2" Asphaltic Asbestos coating after superstructure is in place.
 - All exposed corners to have 1" chamfer.
 - For Section I-I, see Sheet No. 116.

ESTIMATED QUANTITIES

ITEM NO.	DESCRIPTION	UNIT	PIER A				PIER C				
			NET	OVER-RUN	TOTAL	FINAL	NET	OVER-RUN	TOTAL	FINAL	
107	Structure Excavation	C. Y.	23	✓	23	23	✓	23	23	✓	23
401-B	Concrete Class B (Mod.)	C. Y.	104	✓	104	104	✓	104	104	✓	104
402	Reinforcing Steel	LBS.	See Reinforcing Steel Schedule Sheet No. 122								
407	Asphaltic-Asbestos Coating	S. Y.	23	✓	23	23	✓	22	22	✓	22
504	Steel Piling	L. F.	918	✓	918	959	✓	702	702	✓	771

ITEM NO.	DESCRIPTION	UNIT	PIER B				PIER D				
			NET	OVER-RUN	TOTAL	FINAL	NET	OVER-RUN	TOTAL	FINAL	
107	Structure Excavation	C. Y.	89	✓	89	326	✓	110	110	✓	146
401-B	Concrete Class B (Mod.)	C. Y.	80	✓	80	102	✓	79	79	✓	86
402	Reinforcing Steel	LBS.	See Reinforcing Steel Schedule Sheet No. 122								
407	Asphaltic-Asbestos Coating	S. Y.	22	✓	22	22	✓	22	22	✓	22

IM 089-2(26)
This sheet for information only
BR 50 N & S

CONTRACT NO. 1

PIERS B AND D

STATE OF VERMONT
DEPARTMENT OF HIGHWAYS
INTERSTATE PROJECT in the town of
WATERBURY
INTERSTATE OVER STA. 939+50
U.S. ROUTE 2 (RELOC.) OVER STA. 20+00
THE CLARKESON ENGINEERING CO., INC.
CONSULTING ENGINEERS
BOSTON MASSACHUSETTS
SURVEYED BY: S.A.L. CHECKED BY: D.S. & J.B. SCALE: AS NOTED
DRAWN BY: S.A.L. IN CHARGE: J.V.B. DATE: 6-19-88
PROJECT NO. I-89-2(7) SHEET 253 OF 307