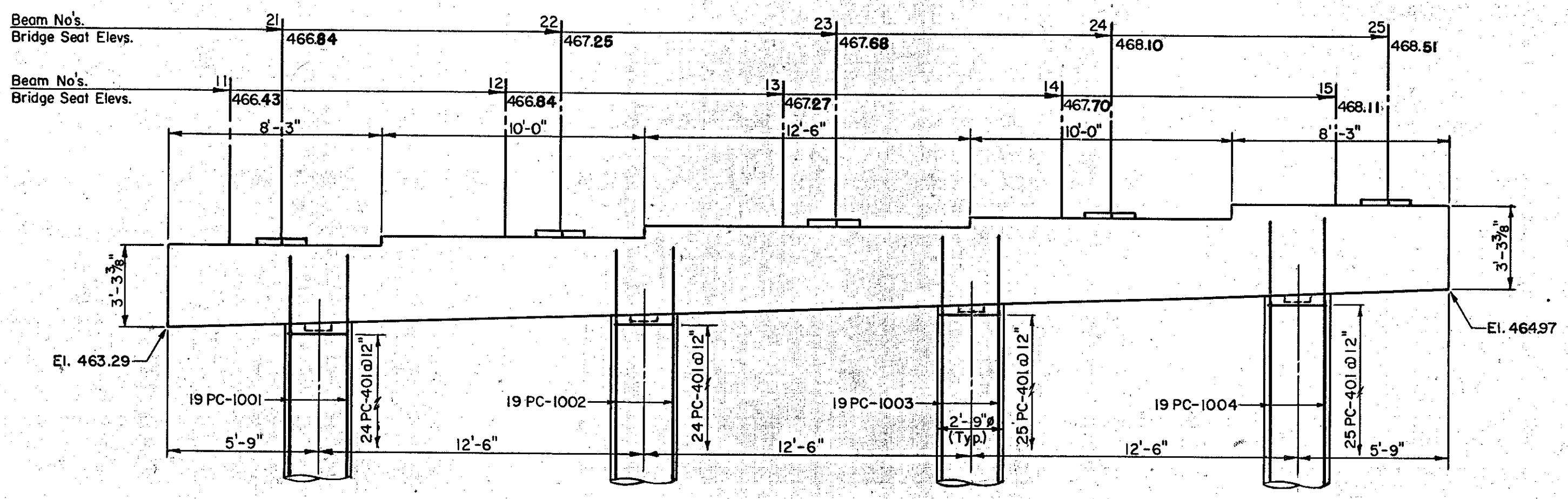
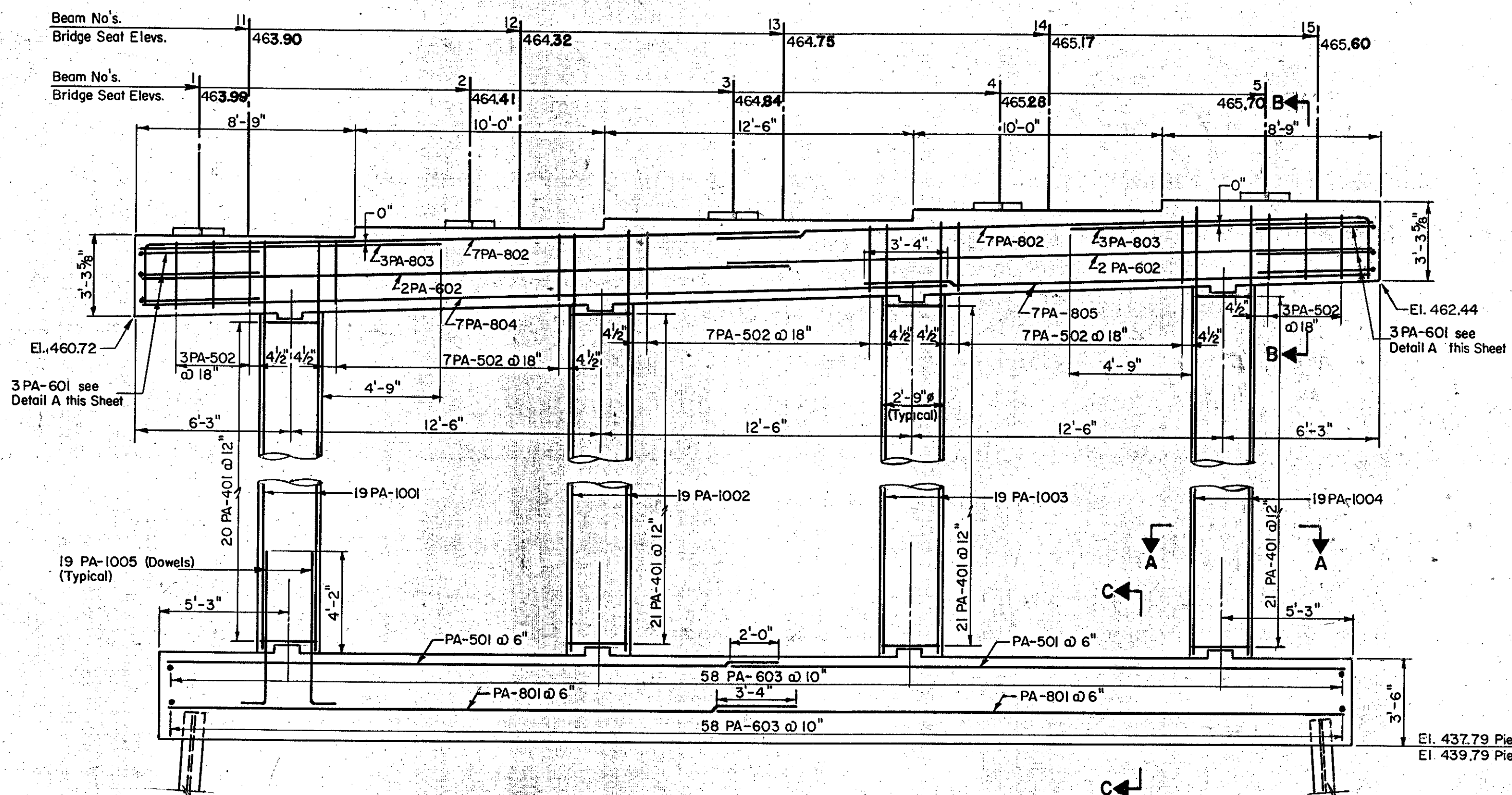
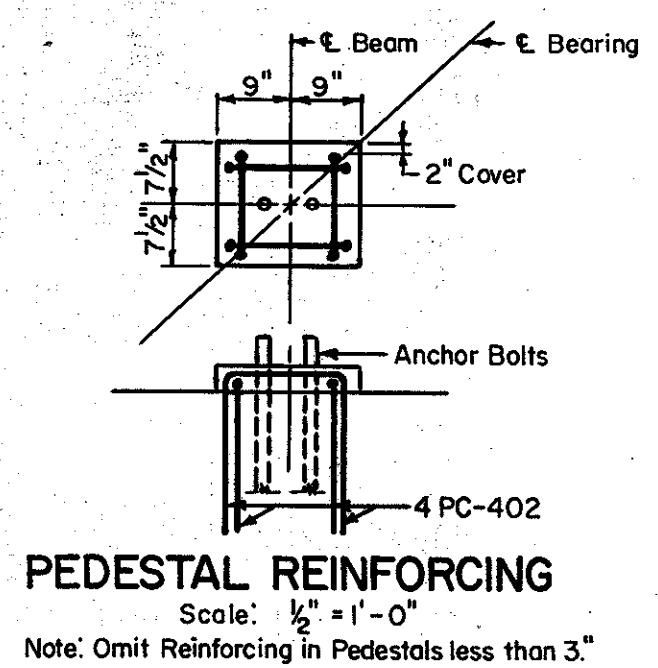
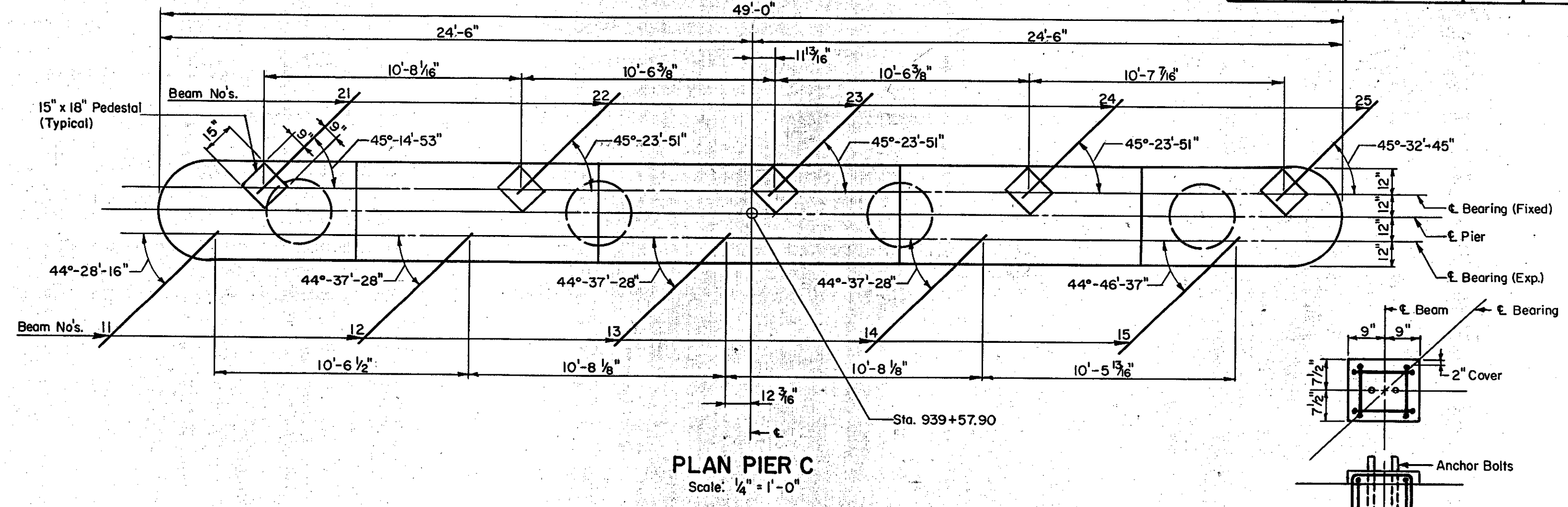
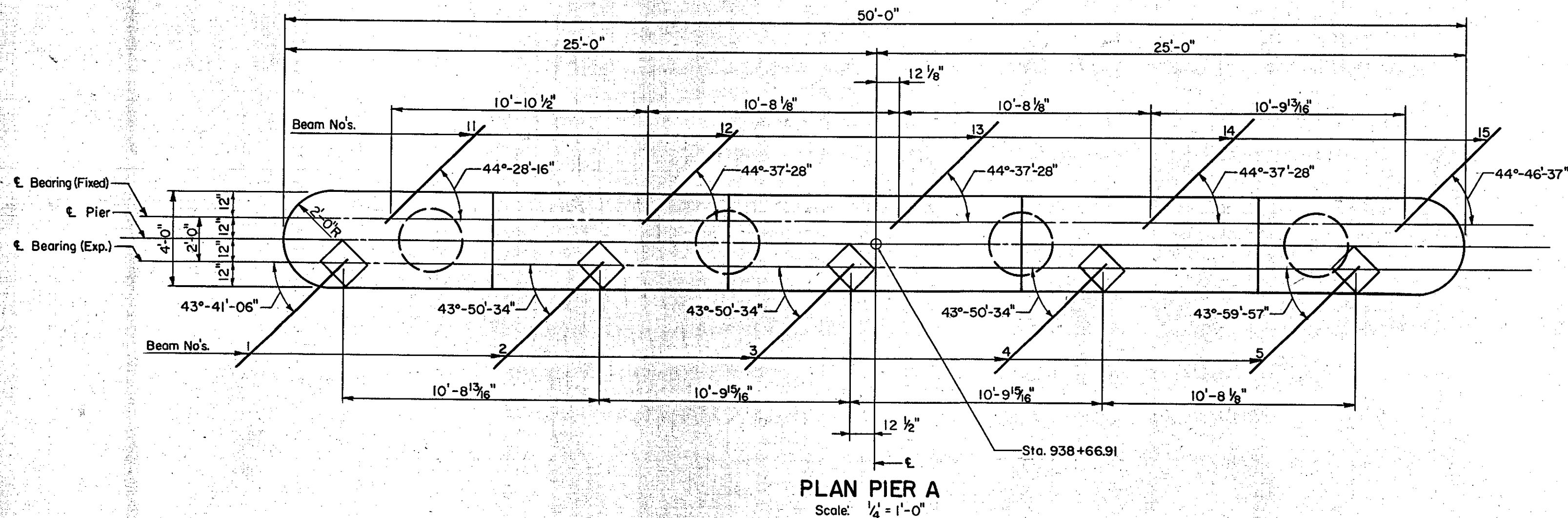
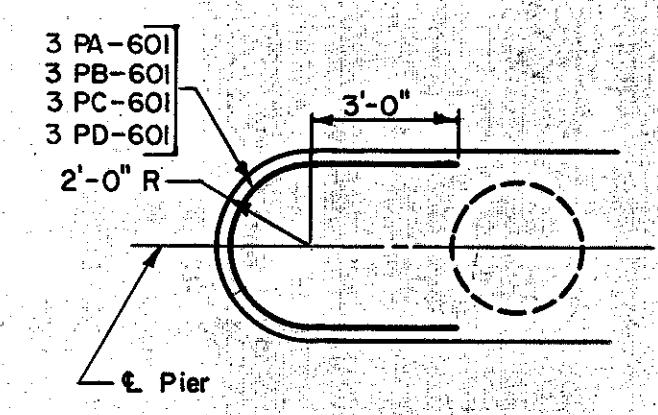
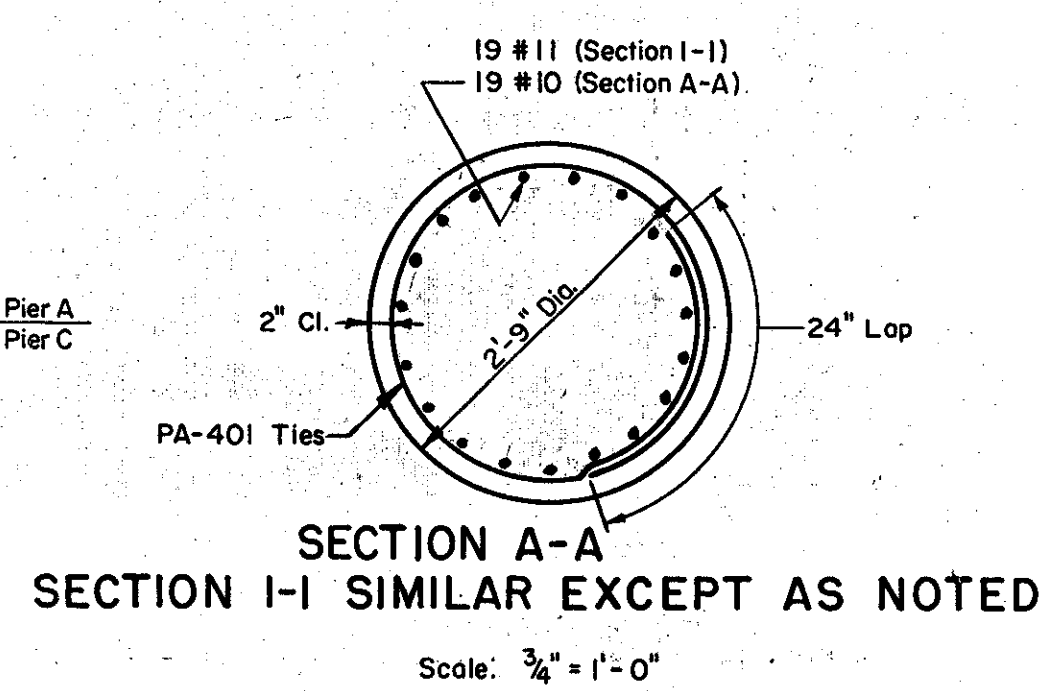


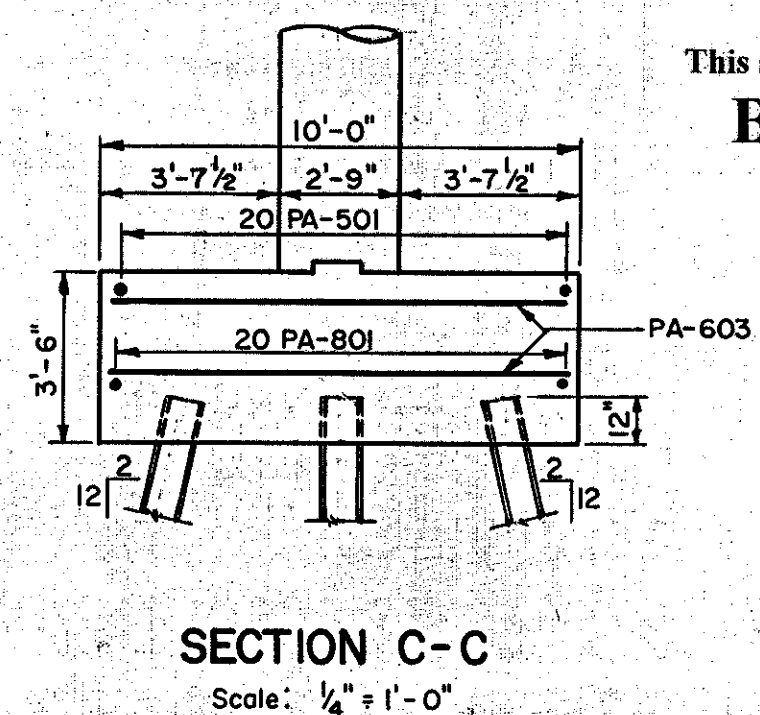
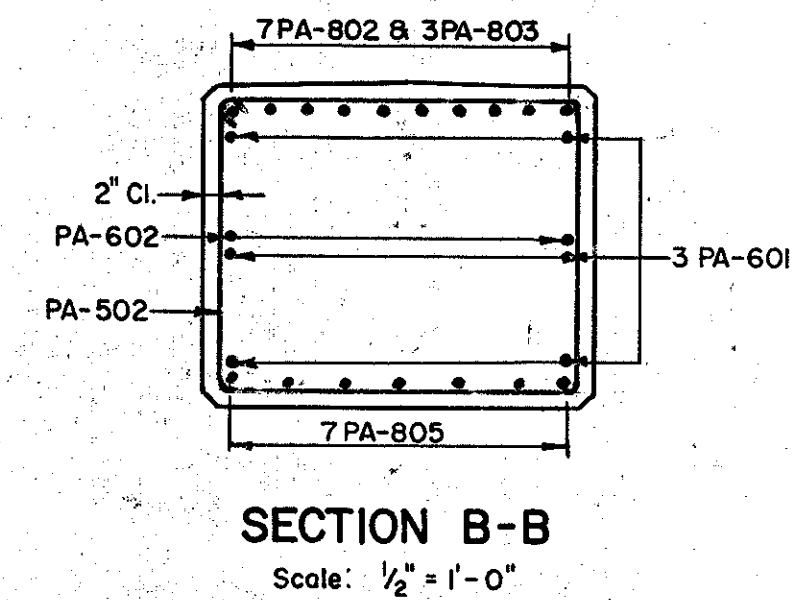
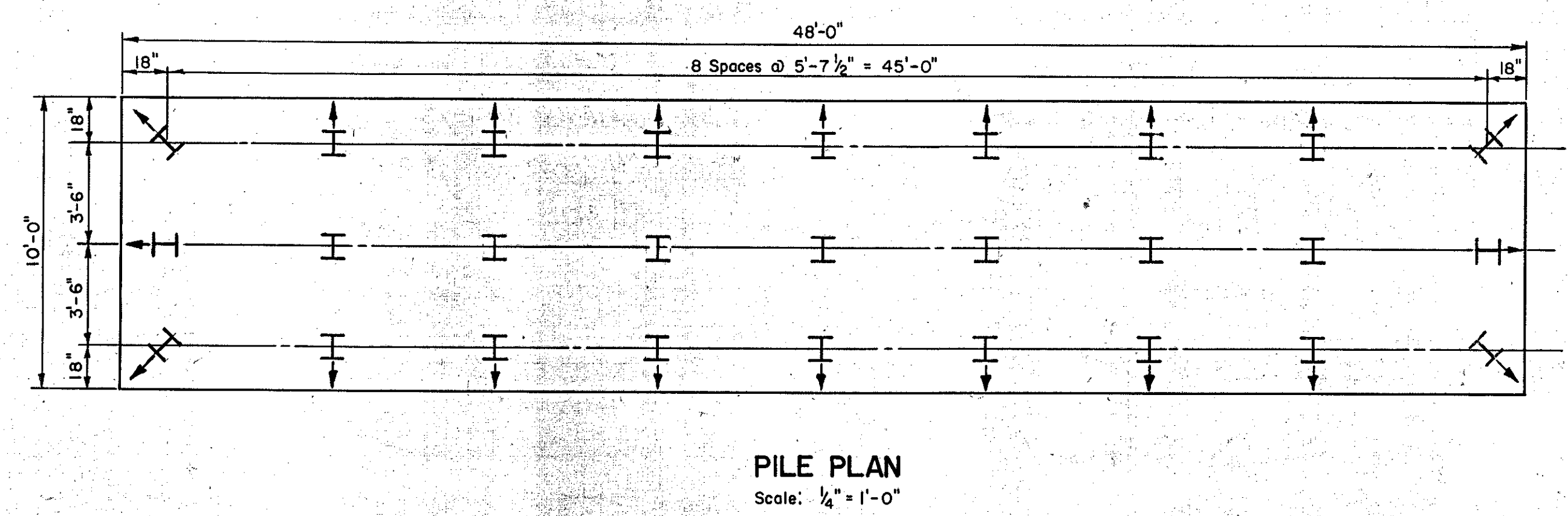
B.R.R. DIV. NO.	STATE	PROJECT NO.	SHEET NO.	TOTAL SHEETS
I	VT.	I-89-2 (7)	116	296



Note: Reinforcing for Beam and Footing of Pier C similar to Pier A except bars to be prefixed PC.



- Notes:
- All piles IO BP 42, 35 ton design load, indicated thus: I Vertical, † Battered.
 - For estimating purposes, Pier piles are assumed to be 34' (Average) long Pier A, and 26' (Average) long Pier C.
 - Prior to driving the piles, rock free fill shall be placed under the Pier area to approximately the level of the pile cut off elevation and with a surface area of at least two (2) feet just outside the pier footings. After the piles have been driven, the fill is to be excavated to the elevations of the footings.
 - All exposed corners to have 1" Chamfer.
 - For location of Section I-I, see Sheet No. 117.
 - Area between bridge seats to be sloped 1/4" per foot from † Pier. Bridge Seats to be covered with 1/2" Asphaltic-Asbestos coating after superstructure is in place.



IM 089-2(26)
This sheet for information only
BR 50 N & S

CONTRACT NO. 2

PIERS A AND C	
STATE OF VERMONT	
DEPARTMENT OF HIGHWAYS	
INTERSTATE PROJECT in the town of	
WATERBURY	
INTERSTATE	STA. 939+50
OVER	
U.S. ROUTE 2 (RELOC.)	STA. 20+00
THE CLARKESON ENGINEERING CO., INC.	
CONSULTING ENGINEERS	
BOSTON	MASSACHUSETTS
SURVEYED BY: S.A.L.	CHECKED BY: D.S. & J.B.
DRAWN BY: S.A.L.	IN CHARGE: J.V.B.
PROJECT NO. I-89-2(7)	SHEET 252 OF 307