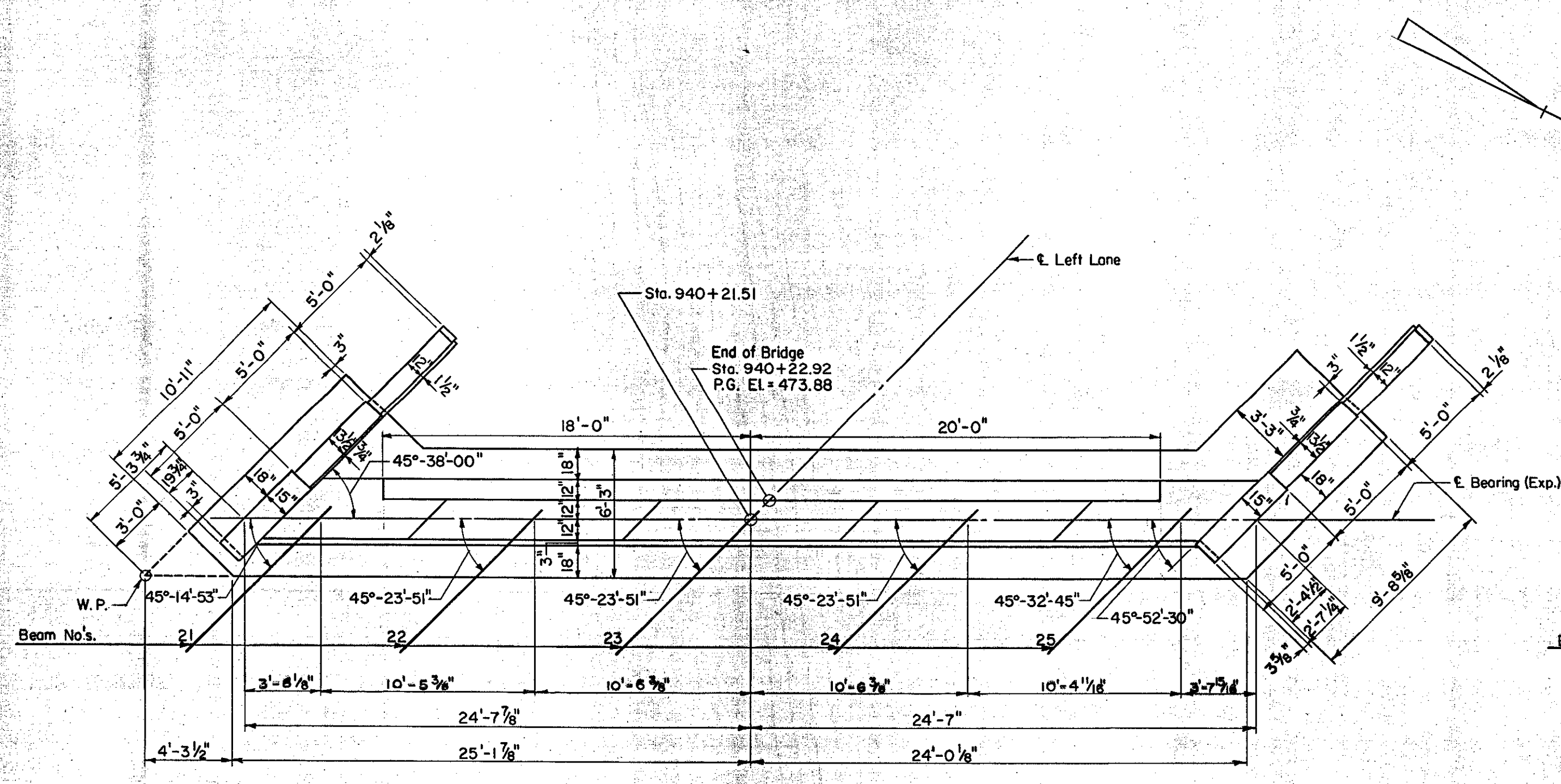
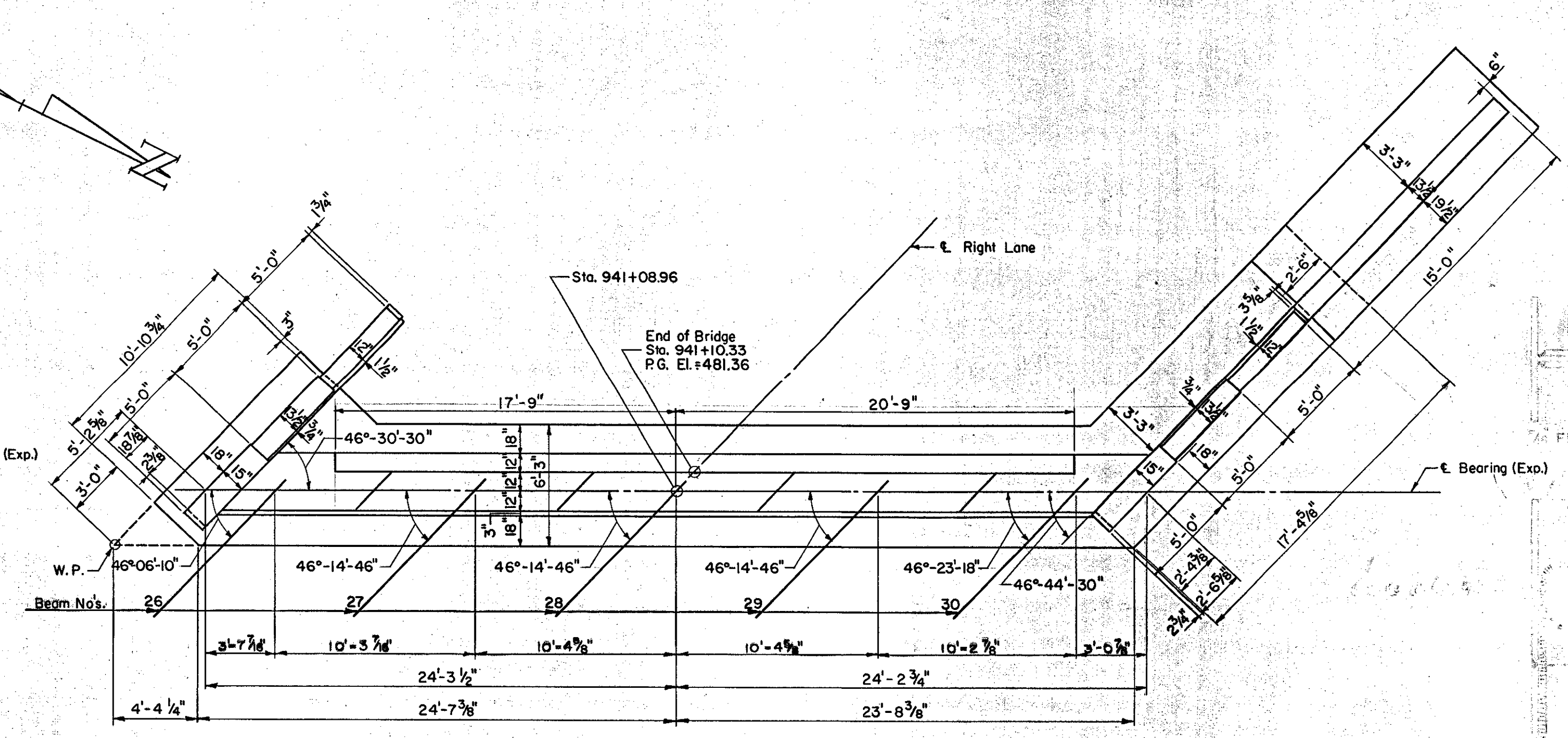


B.P.R. DIV. NO.	STATE	PROJECT NO.	SHEET NO.	TOTAL SHEETS
1	VT.	I-89-2 (7)	113	296

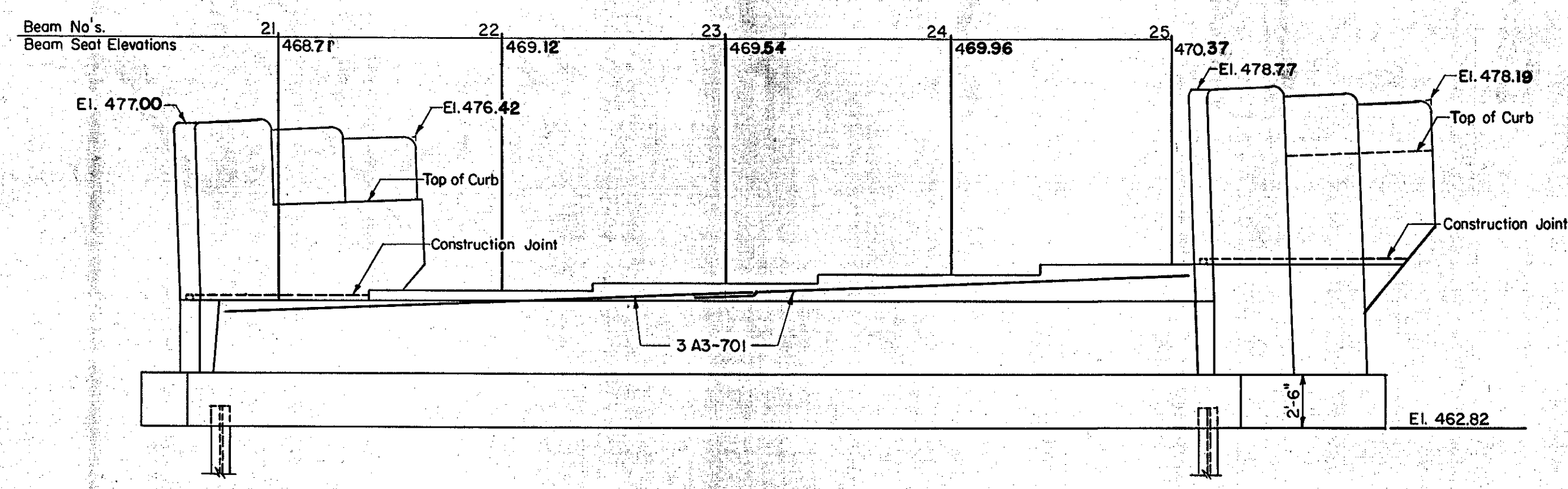


**PLAN ABUTMENT NO. 3**  
Scale: 3/16" = 1'-0"

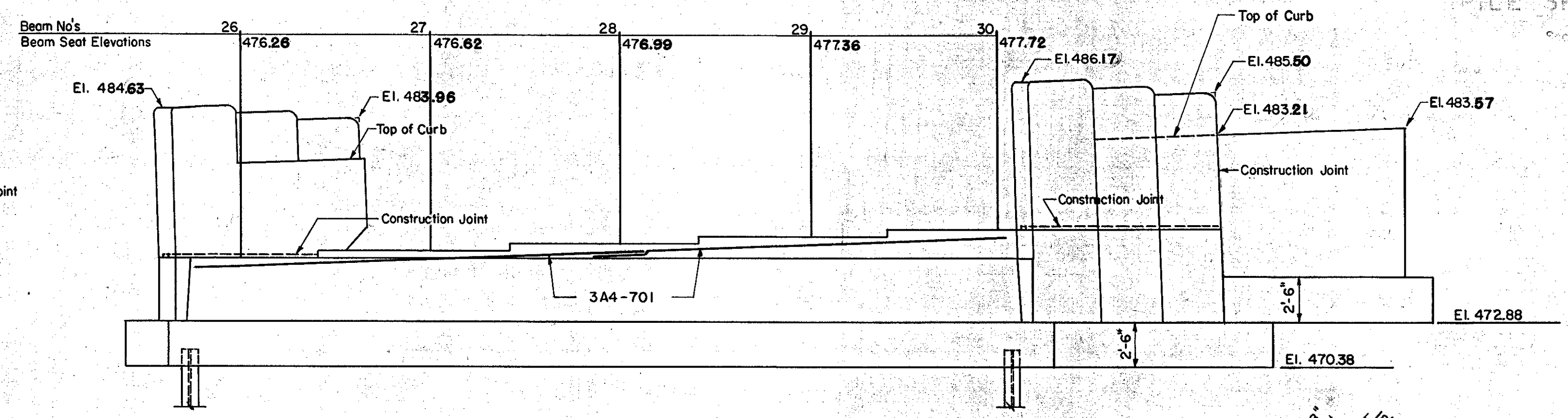


**PLAN ABUTMENT NO. 4**  
Scale: 3/16" = 1'-0"

FOR PILE SPLICE DETAIL SEE STANDARD SHEET SB-20-56

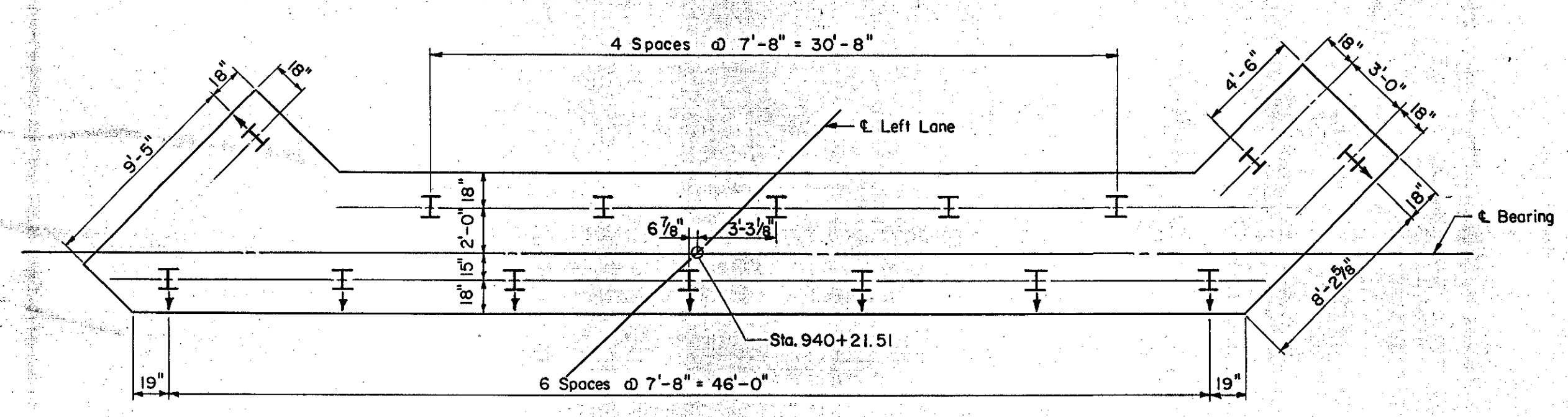


**ELEVATION ABUTMENT NO. 3**  
Scale: 3/16" = 1'-0"

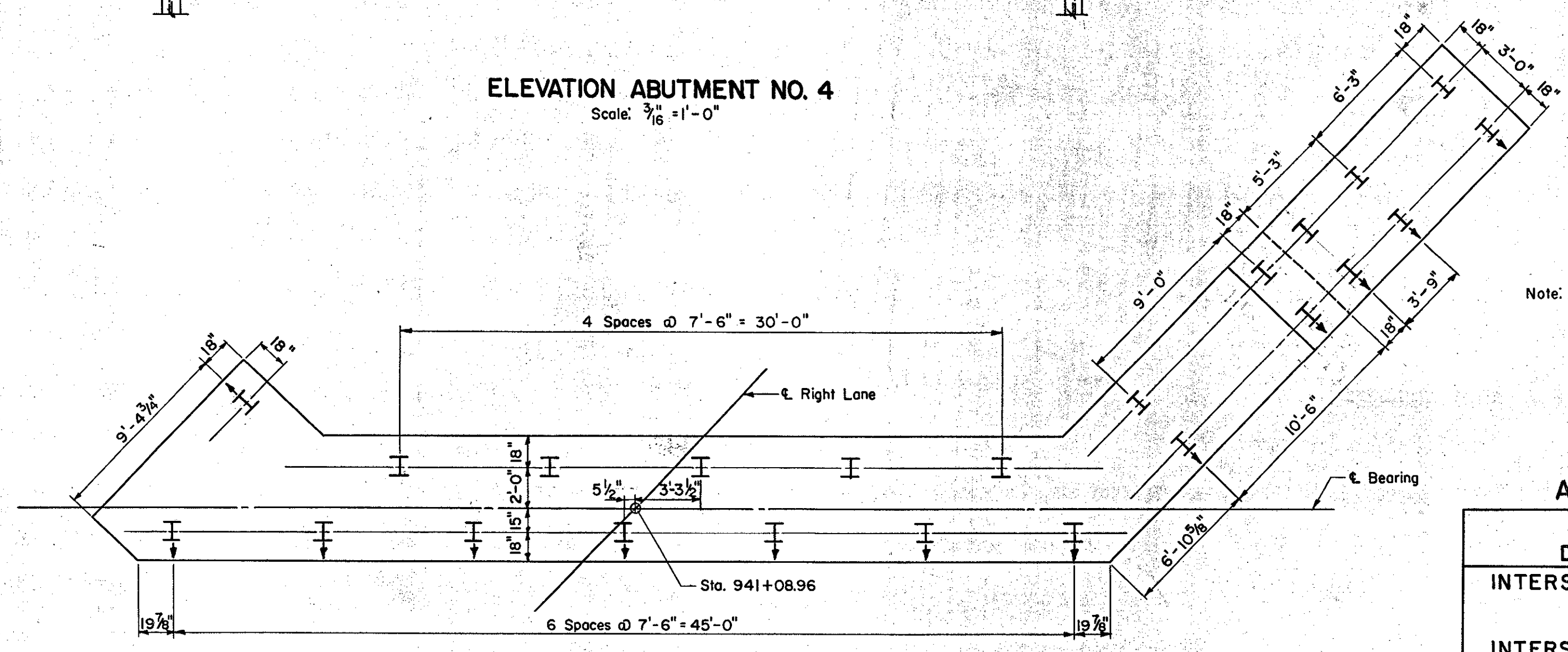


**ELEVATION ABUTMENT NO. 4**  
Scale: 3/16" = 1'-0"

PILE SPLICE DETAILS  
Scale: 1/2" = 1'-0"



**PILE PLAN ABUTMENT NO. 3**  
Scale: 3/16" = 1'-0"



**PILE PLAN ABUTMENT NO. 4**  
Scale: 3/16" = 1'-0"

Note: See Sheet 113 for General Notes.

IM 089-2(26)  
This sheet for information only  
**BR 50 N & S**  
CONTRACT NO. 2

**ABUTMENTS NO. 3 AND NO. 4**  
STATE OF VERMONT  
DEPARTMENT OF HIGHWAYS  
INTERSTATE PROJECT in the town of  
**WATERBURY**  
INTERSTATE OVER STA. 939+50  
U.S. ROUTE 2 (RELOC.) STA. 20+00  
THE CLARKSON ENGINEERING CO., INC.  
CONSULTING ENGINEERS MASSACHUSETTS  
BOSTON  
SURVEYED BY: S.A.L. CHECKED BY: J.B.D.S. SCALE: AS NOTED  
DRAWN BY: S.A.L. IN CHARGE: J.V.B. DATE: 6-19-58  
PROJECT NO. I-89-2(7) SHEET 249 OF 307