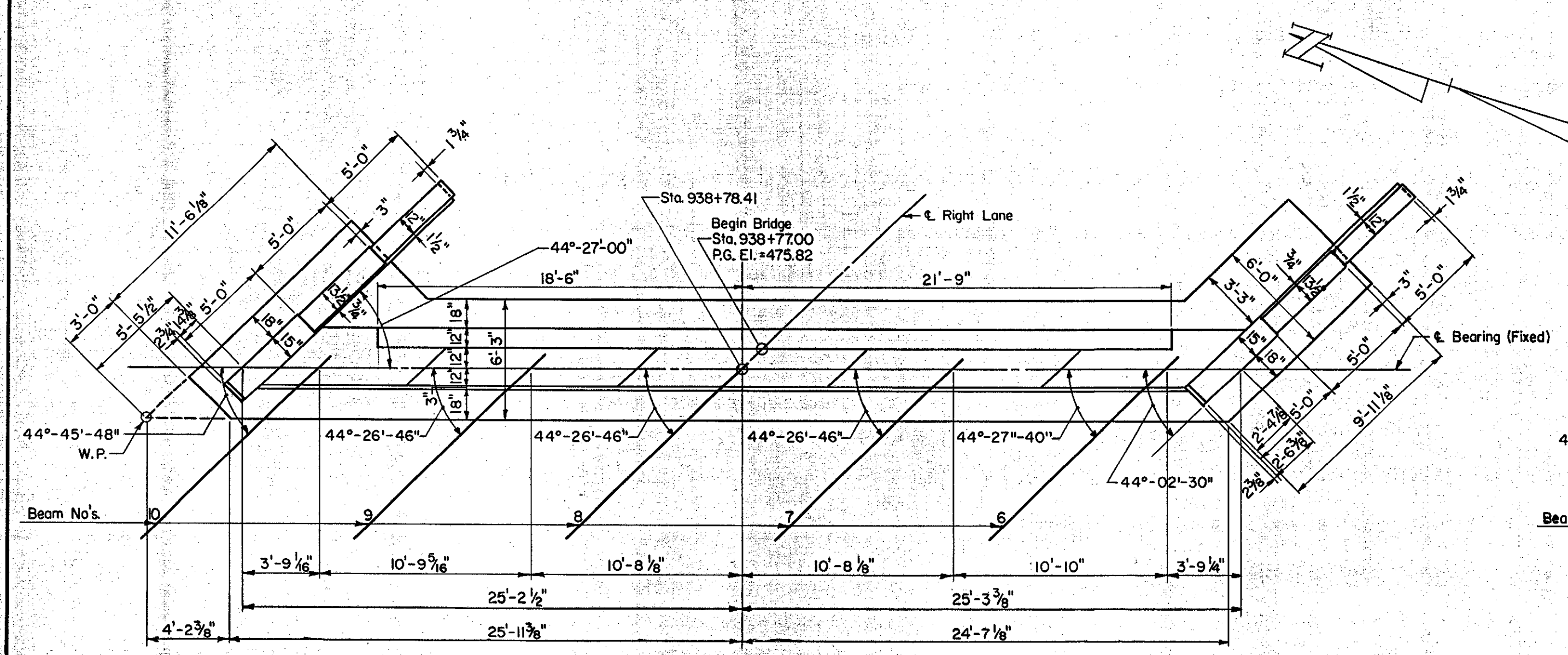
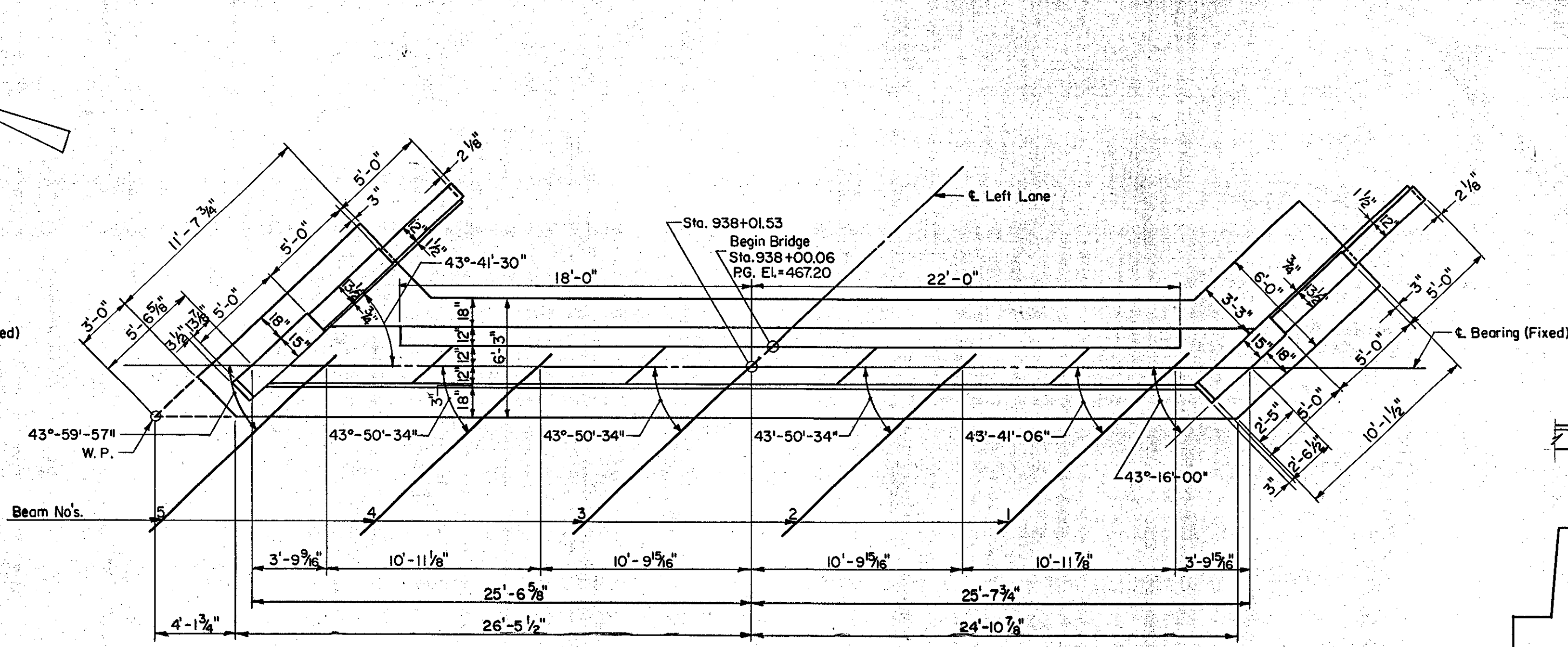


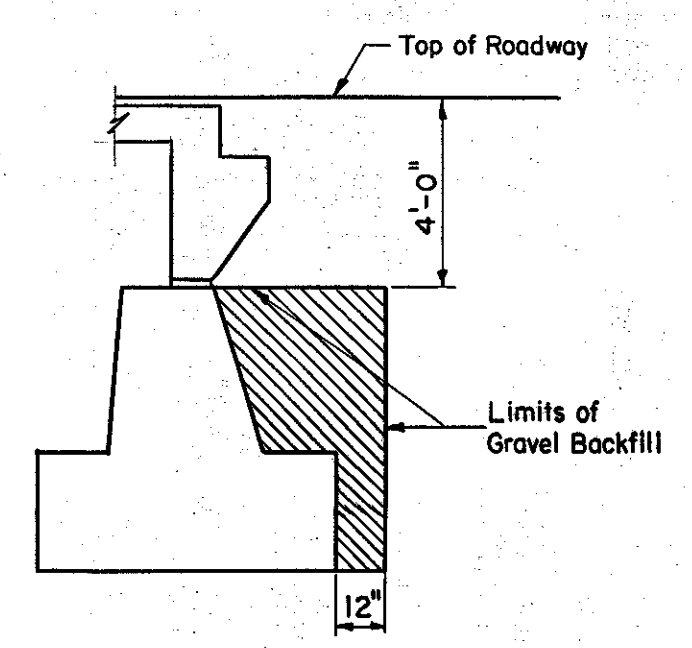
B.P.R. DIV. NO.	STATE	PROJECT NO.	SHEET NO.	TOTAL SHEETS
1	VT.	I-89-2(7)	12	295



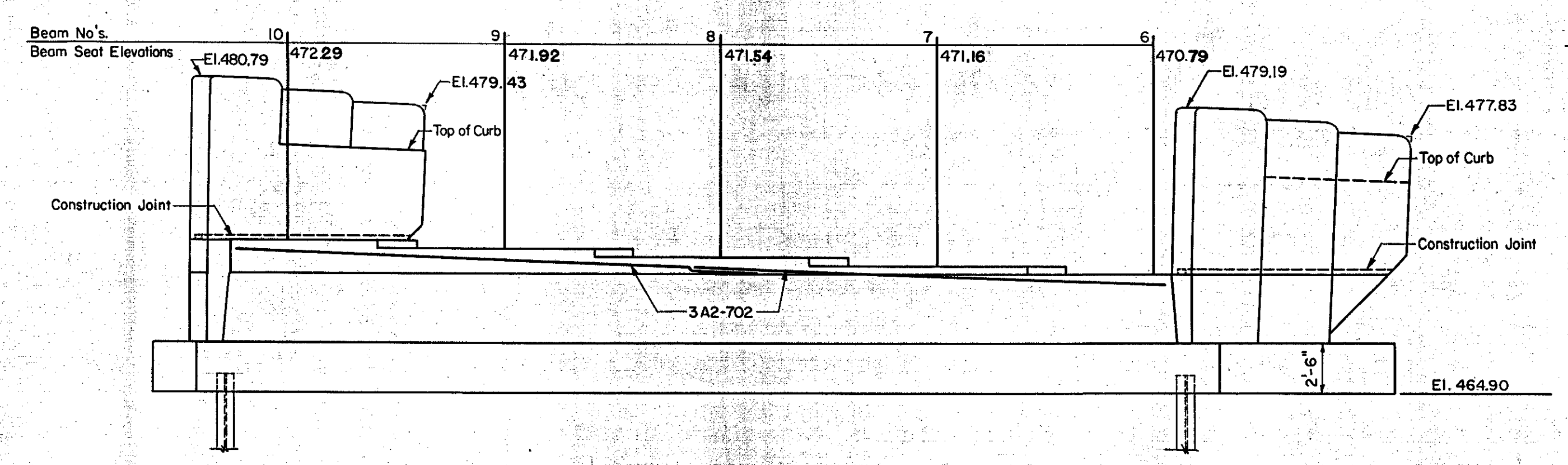
**PLAN ABUTMENT NO. 2**  
Scale: 3/16" = 1'-0"



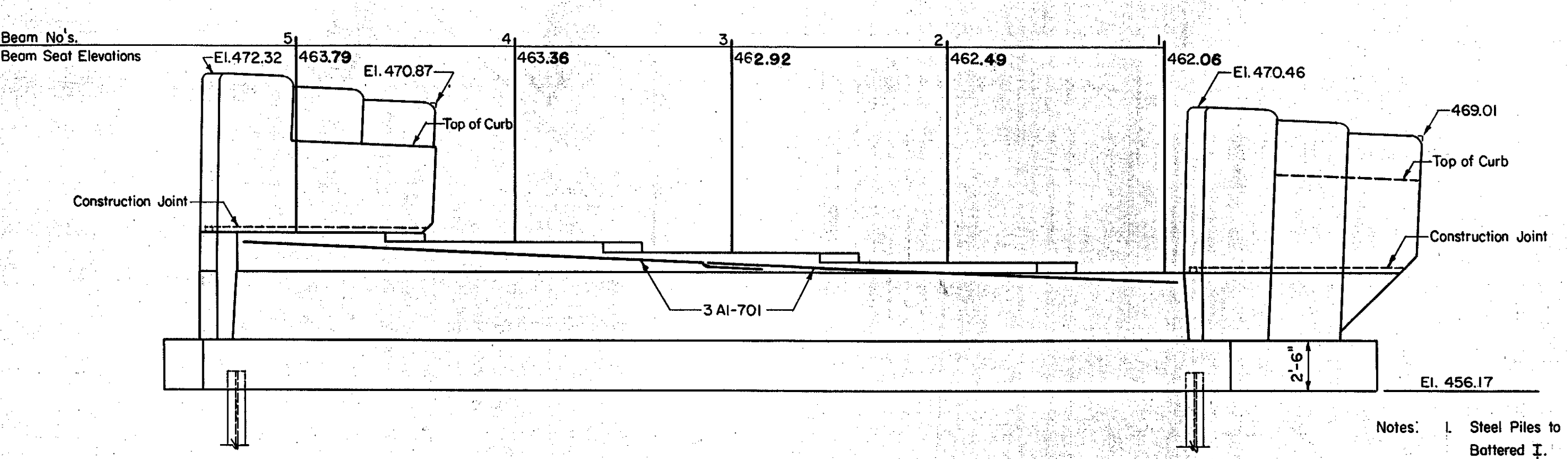
**PLAN ABUTMENT NO. 1**  
Scale: 3/16" = 1'-0"



**LIMITS OF GRAVEL BACKFILL**  
Scale: 1/4" = 1'-0"

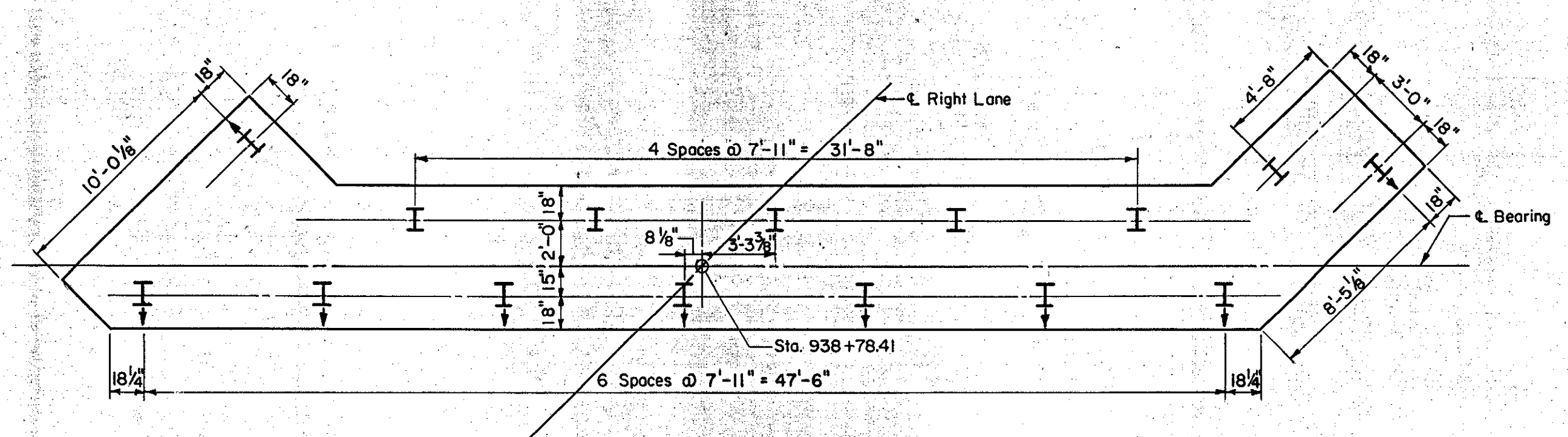


**ELEVATION ABUTMENT NO. 2**  
Scale: 3/16" = 1'-0"

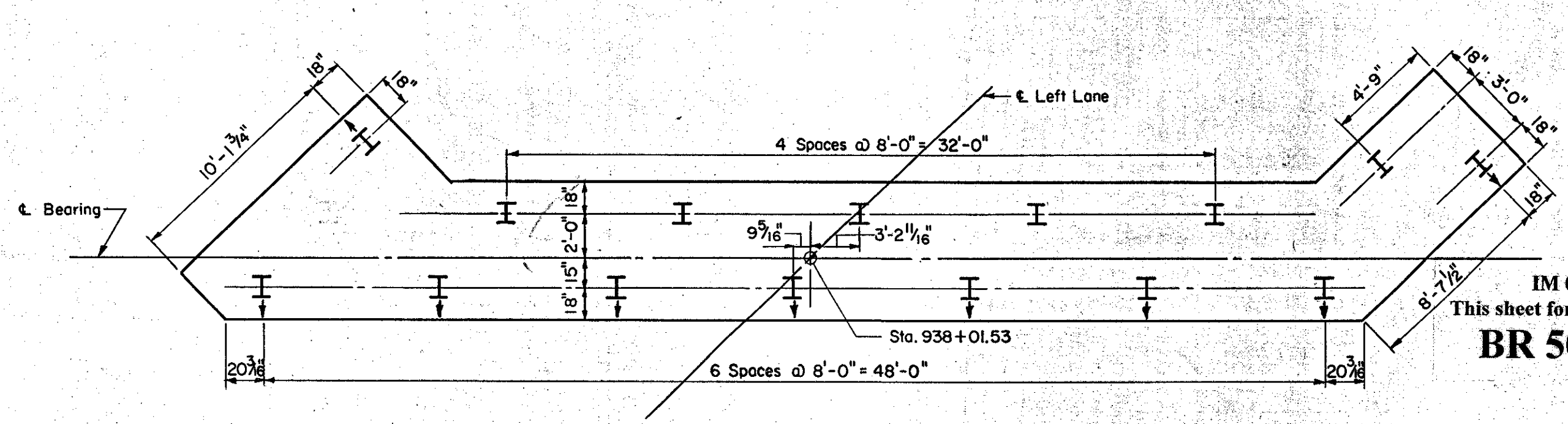


**ELEVATION ABUTMENT NO. 1**  
Scale: 3/16" = 1'-0"

- Notes:
1. Steel Piles to be IOBP42, 35 Ton Design Load. Indicated thus: Vertical I, Battered I.
  2. For Estimating Purposes, the average length of steel piles is assumed to be 52' Abut. No. 1, 49' Abut. No. 2, 44' Abut. No. 3, and 31' Abut. No. 4.
  3. Slope all Bridge Seats 1/4" per ft. between Bearing E's.
  4. Entire exposed surface of the Bridge Seat to be covered with 1/2" Asphaltic-Asbestos coating after superstructure is in place.
  5. Prior to driving the piles, rock free fill shall be placed under the Abutment area to approximately the level of the pile cut-off elevation and with a surface area at least two (2) feet outside the Abutment. After piles are driven, the fill is to be excavated to the elevation of the bottom of footing.
  6. All beam seat elevations shown are to top of concrete.
  7. A layer of Sub-Base of Crushed Rock, Item 204 (Mod.), one (1) foot thick shall be placed 73'± along slope Abut. No. 1 & 2, 70'± along slope Abut. No. 3 and 79'± along slope Abut. No. 4. The edges of the area to be in line with the end posts and parallel to the E. of the Roadway.
  8. For Footing Reinforcing, see Sheet No. 114.
  9. For Wingwall details and typical Abutment Sections, see Sheet No. 115.



**PILE PLAN ABUTMENT NO. 2**  
Scale: 3/16" = 1'-0"



**PILE PLAN ABUTMENT NO. 1**  
Scale: 3/16" = 1'-0"

This sheet for information only  
IM 089-2(26)  
**BR 50 N & S ABUTMENTS NO. 1 AND NO. 2**

<b>STATE OF VERMONT</b>		
<b>DEPARTMENT OF HIGHWAYS</b>		
INTERSTATE PROJECT in the town of		
<b>WATERBURY</b>		
INTERSTATE	OVER	STA. 939+50
<b>U.S. ROUTE 2 (RELOC.)</b>		STA. 20+00
THE CLARKESON ENGINEERING CO., INC.		
CONSULTING ENGINEERS		
BOSTON	MASSACHUSETTS	
SURVEYED BY:	CHECKED BY: J.B. O.D.S.	SCALE: AS NOTED
DRAWN BY: S.A.L.	IN CHARGE: J.V.B.	DATE: 6-19-58
PROJECT NO. I-89-2(7)	SHEET 1	248 OF 307