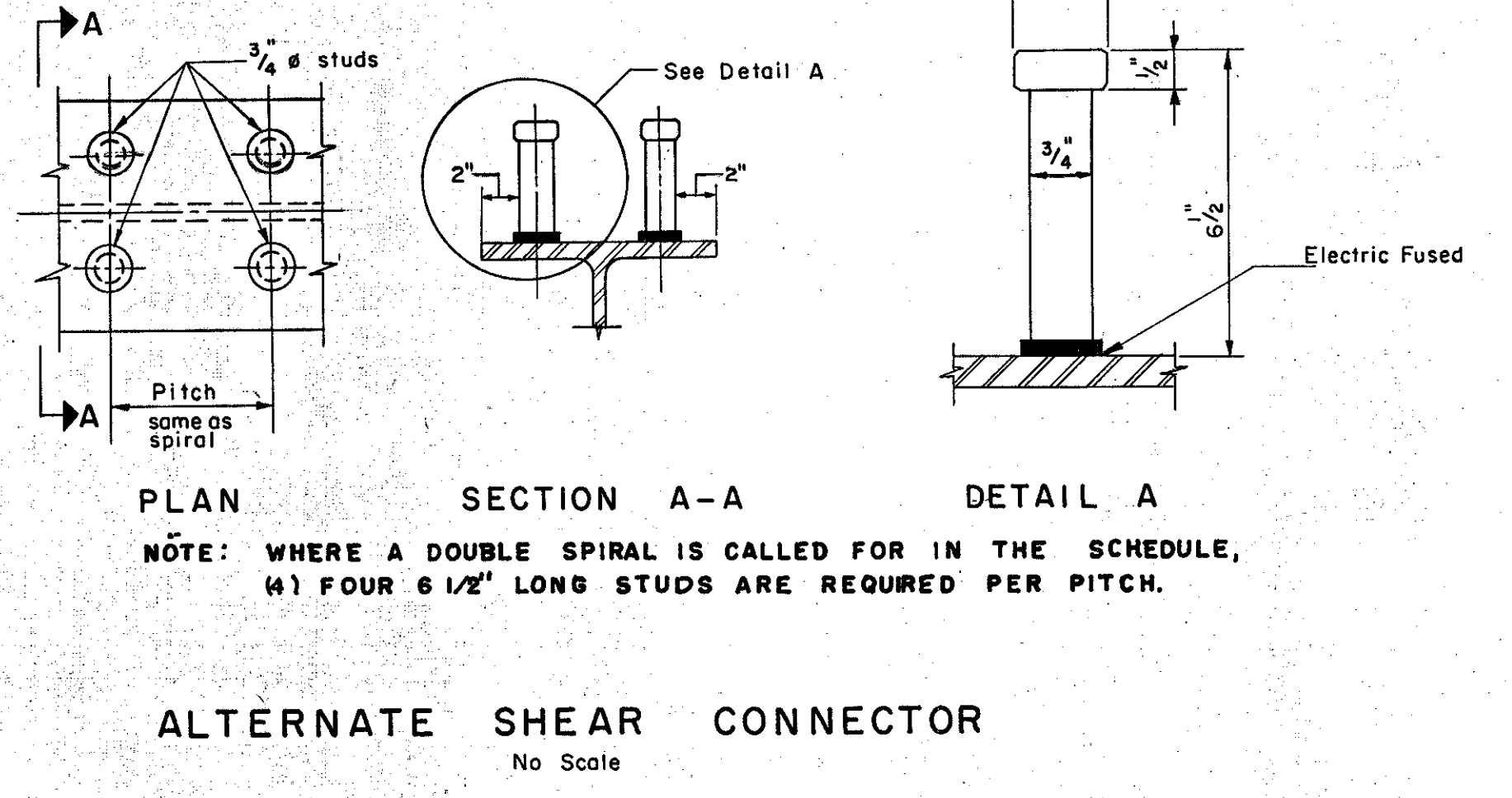
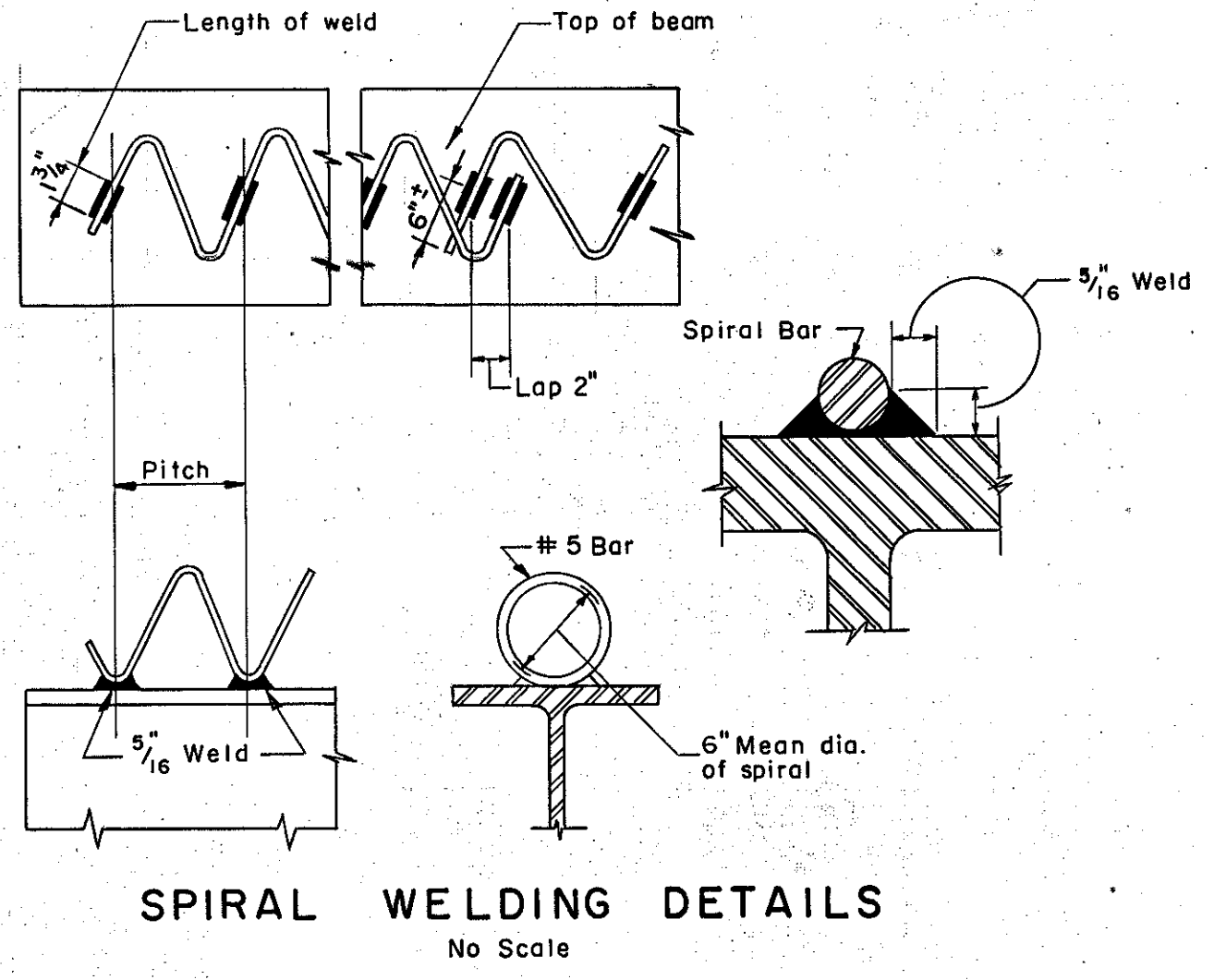
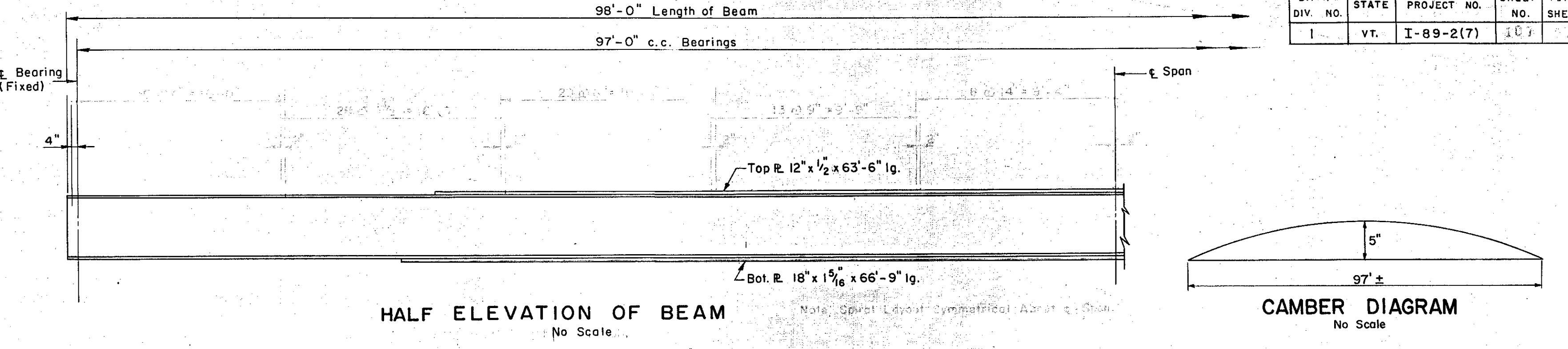
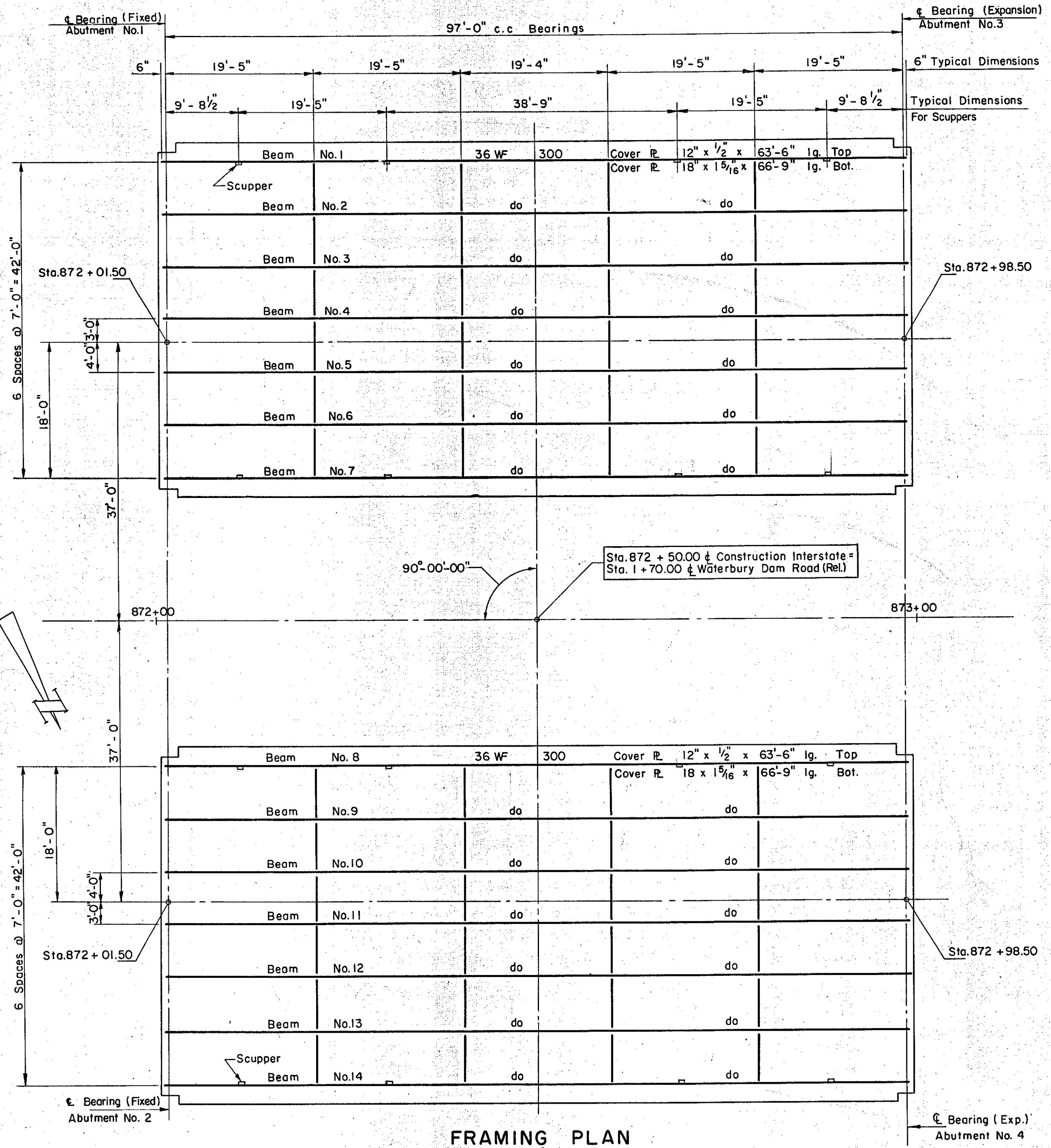


| B.P.R. DIV. NO. | STATE | PROJECT NO. | SHEET NO. | TOTAL SHEETS |
|-----------------|-------|-------------|-----------|--------------|
| 1 | VT. | I-89-2(7) | 107 | |



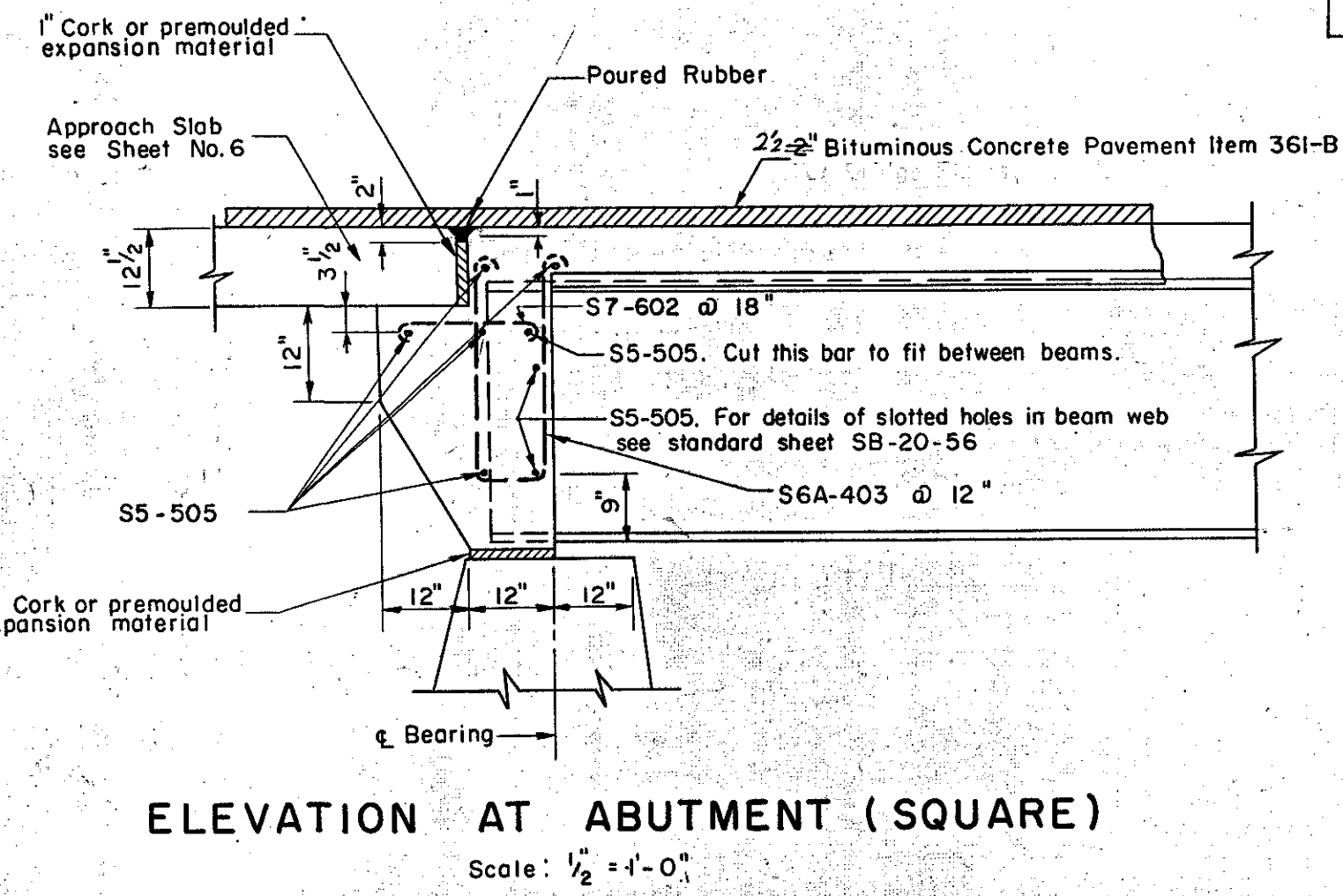
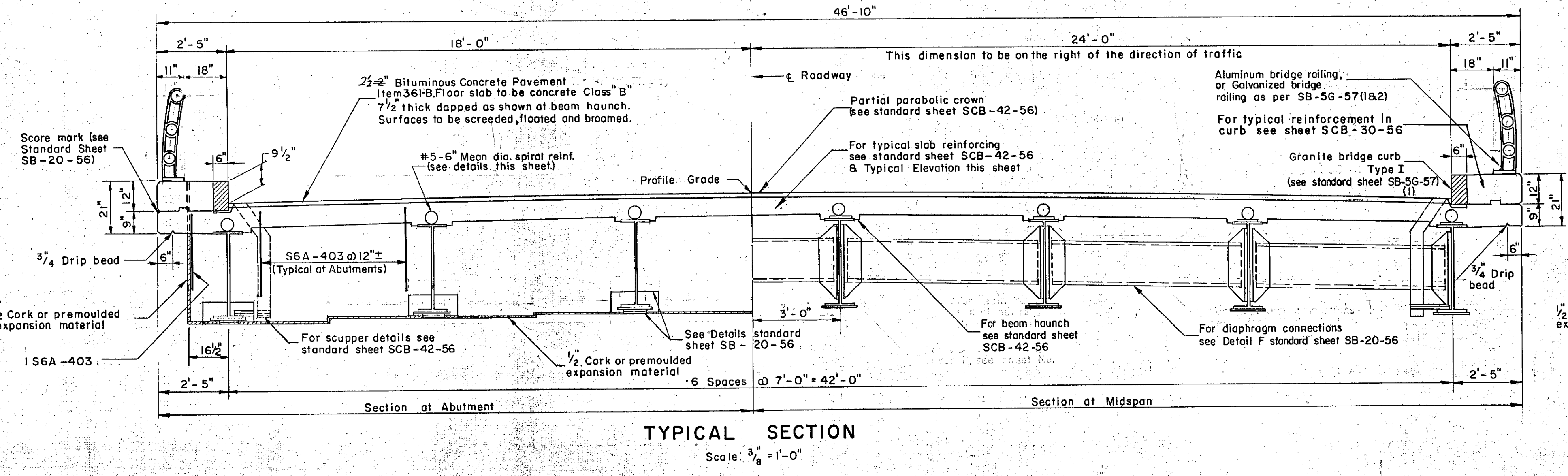
ESTIMATED QUANTITIES

| ITEM NO. | DESCRIPTION | UNIT | RIGHT LANE | | | LEFT LANE | | | | |
|----------|-----------------------------------|------|--|----------|---------|-----------|----------|-------|---------|-----------|
| | | | NET | OVER-RUN | TOTAL | NET | OVER-RUN | TOTAL | | |
| 36-B | Bit. Conc. Pavement | Tons | -62 | -8 | -60 | See Total | -52 | -8 | -60 | See Total |
| 401-B | Concrete Class B (Mod.) | C.Y. | +45 | -7 | +38 | 157 | +45 | -7 | +38 | 157 |
| 402 | Reinforcing Steel | Lbs. | See Reinforcing Steel Schedule Sheet No. 8 | | | | | | | |
| 403-c | Spiral Reinforcement (5,100 LBS.) | L.S. | 1 | 1 | 1 | 1 | 1 | 1 | 1 | 1 |
| 404-A | Structural Steel | Lbs. | 264,742 | -5295 | 270,037 | 263,155 | 264,742 | -5295 | 270,037 | 263,155 |

- NOTES:**
- All dimensions are horizontal dimensions.
 - All diaphragms shall be 18 C 42.7.
 - All beams shall be rolled to true circular camber with the middle ordinate as shown on this sheet.
 - The steel for all beams and cover plates shall conform to A.S.T.M. Designation A373. All other structural steel shall conform to either A 7 or A 373.

SPIRAL SCHEDULE

| SPIRAL PITCH | 0-10' FROM BRNG | DOUBLE @ 5 1/2" |
|--------------|------------------|-----------------|
| " " | 10-20' OR @ SPAN | DOUBLE @ 6 1/2" |
| " " | 20-30' OR @ SPAN | 4 1/2" |
| " " | 30-40' OR @ SPAN | 5 1/2" |
| " " | 40'-@ SPAN | 7" |



IM 089-2(26)
This sheet for information only
BR 49 N & S
CONTRACT NO. 1

STRUCTURAL STEEL PLAN AND DETAILS
STATE OF VERMONT
DEPARTMENT OF HIGHWAYS
INTERSTATE PROJECT in the town of
WATERBURY
INTERSTATE OVER STA. 872 + 50
WATERBURY DAM RD. (REL.) STA. 1 + 70

THE CLARKSON ENGINEERING CO., INC.
CONSULTING ENGINEERS
BOSTON MASSACHUSETTS

SURVEYED BY V.C.S. CHECKED BY G.B. & D.S. SCALE AS NOTED
DRAWN BY J.V.B. IN CHARGE DATE 6-19-56

PROJECT NO. I-89-2(7) SHE 243 OF 307