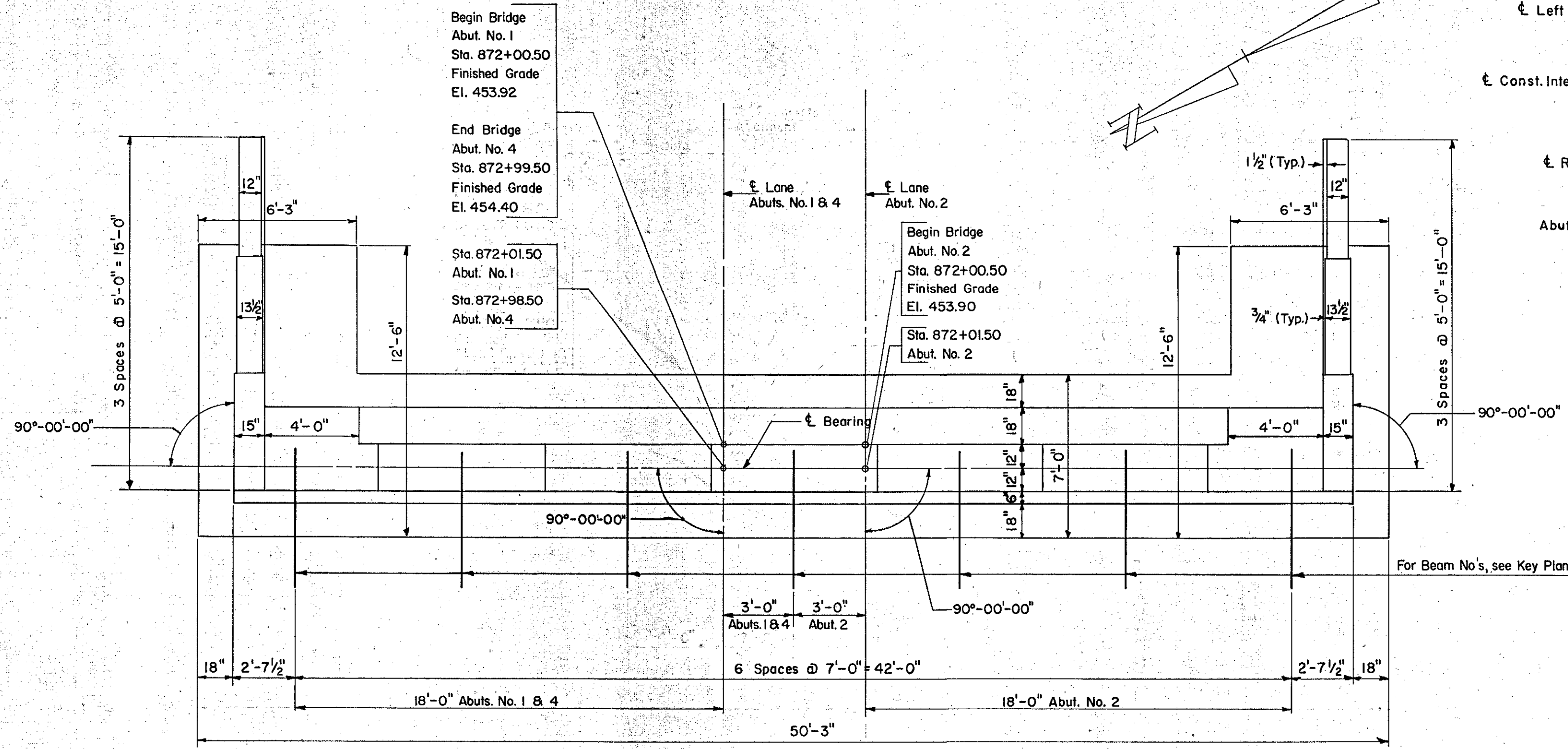
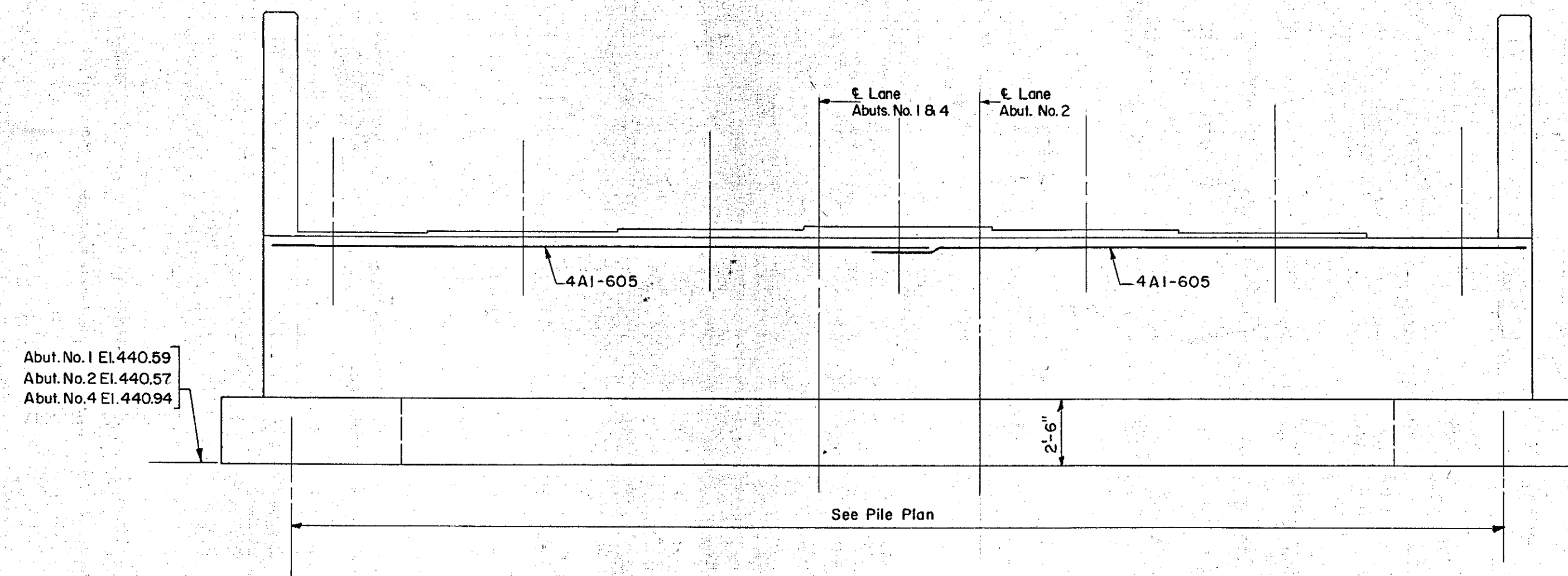


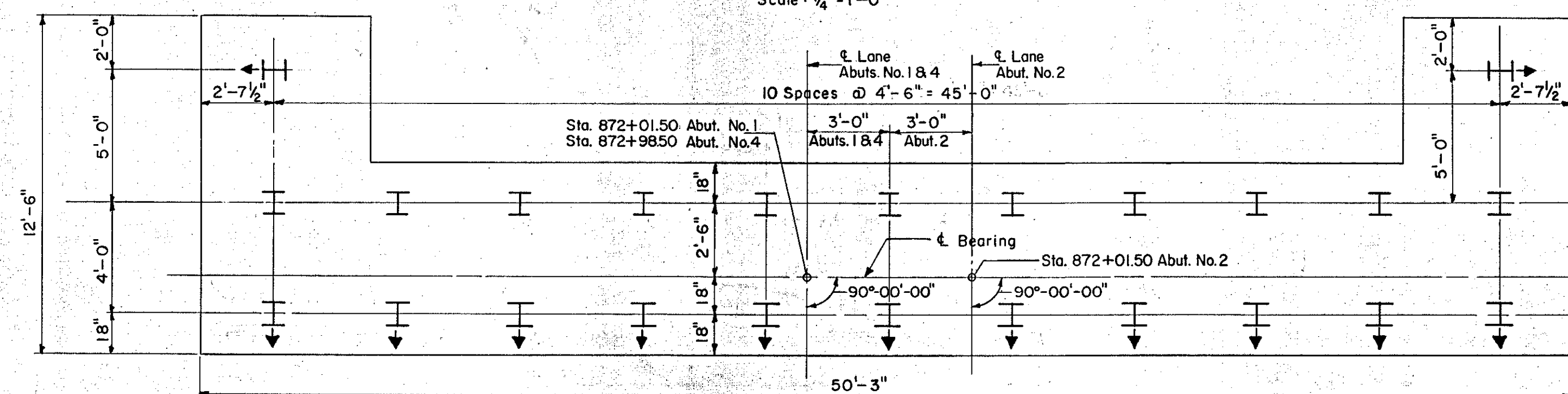
B.P.R. DIV. NO.	STATE	PROJECT NO.	SHEET NO.	TOTAL SHEETS
1	VT.	I-89-2 (7)	10	10



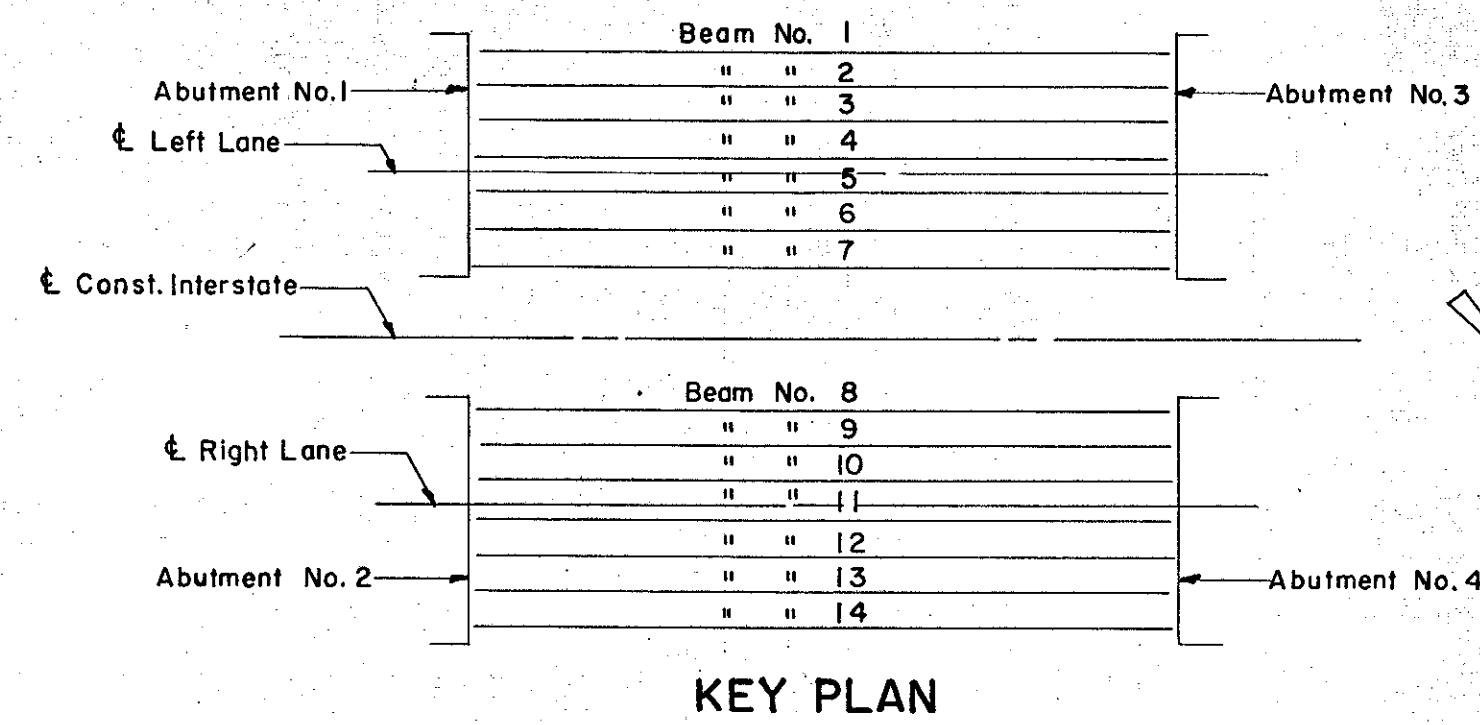
PLAN ABUTMENTS NO. 1 & 4
ABUTMENT NO. 2 SIMILAR EXCEPT AS NOTED
Scale: 1/4" = 1'-0"



ELEVATION ABUTMENTS NO. 1 & 4
ABUTMENT NO. 2 SIMILAR EXCEPT AS NOTED
Scale: 1/4" = 1'-0"



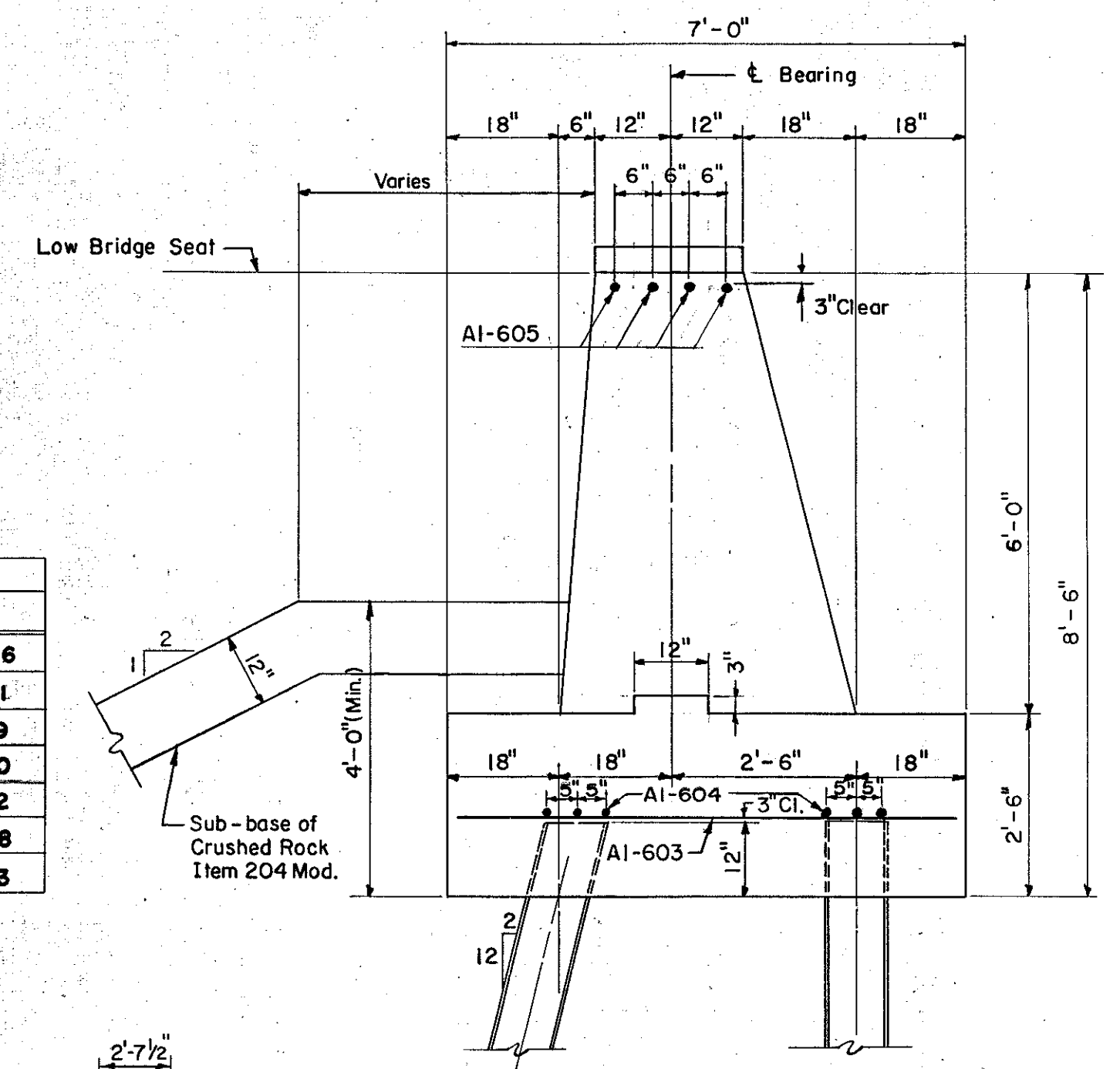
PILE PLAN ABUTMENTS NO. 1 & 4
ABUTMENT NO. 2 SIMILAR EXCEPT AS NOTED
Scale: 1/4" = 1'-0"



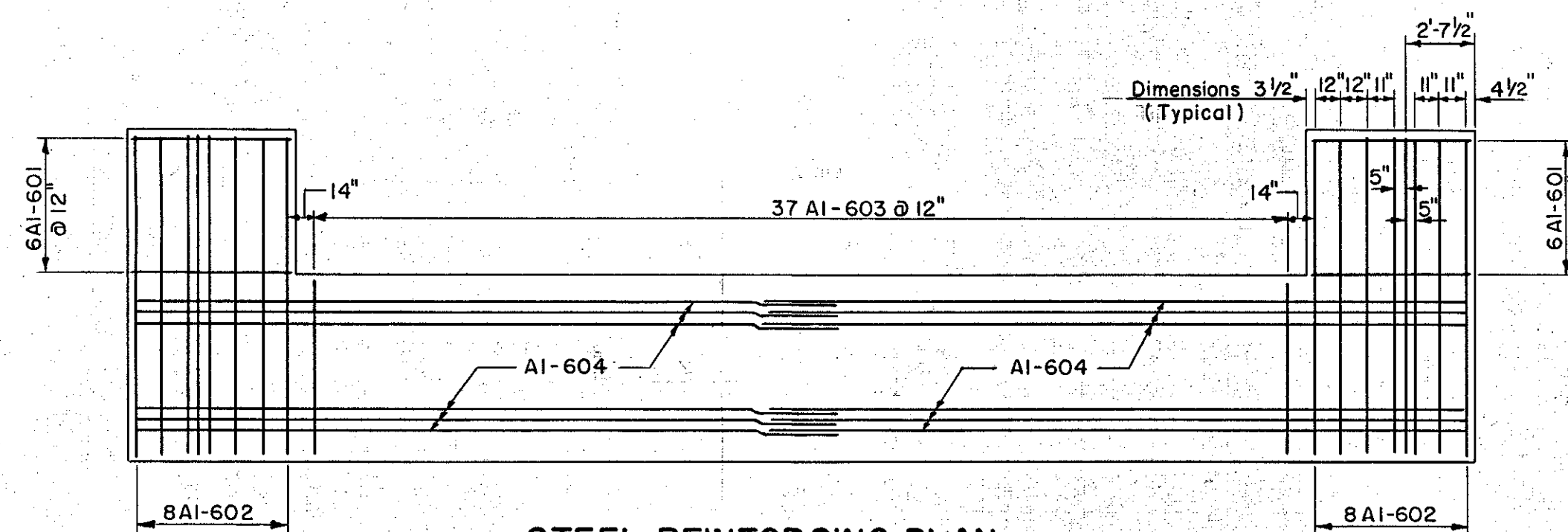
KEY PLAN

MASONRY SHELF ELEVATIONS

ABUTMENT NO. 1		ABUTMENT NO. 3		ABUTMENT NO. 2		ABUTMENT NO. 4	
Beam No.	Elev.	Beam No.	Elev.	Beam No.	Elev.	Beam No.	Elev.
1	448.98	1	449.35	8	449.09	8	449.46
2	449.13	2	449.50	9	449.24	9	449.61
3	449.27	3	449.64	10	449.32	10	449.69
4	449.36	4	449.72	11	449.33	11	449.70
5	449.34	5	449.71	12	449.25	12	449.62
6	449.26	6	449.63	13	449.11	13	449.48
7	449.11	7	449.48	14	448.96	14	449.33



TYPICAL SECTION ABUTMENTS 1, 2 & 4
Scale: 1/2" = 1'-0"



STEEL REINFORCING PLAN
ABUTMENTS 1, 2 AND 4

Note: Reinforcing in Abutments 2 and 4 to be prefixed A2 and A4 respectively.

- Note:
- Beam seat elevations are to top of concrete.
 - For Typical Elevation of Wing walls, see Sheet No. 6.
 - Steel piles to be IOBP-42, 35 Ton design Load. Vertical piles indicated thus \perp . Battered piles indicated thus \perp .
 - For Limits of Gravel Backfill see Sheet No. 6.
 - Prior to driving piles, rock free fill shall be placed, under the abutment to approximately the pile cut-off elevation and with a surface area of at least 2 (two) feet outside the abutment area. After the piles are driven the fill shall be excavated to the elevation of the bottom of footing.
 - Slope area between bridge seats 1/4" per ft. Entire exposed surface of the Bridge Seat to be covered with 1/2" Asphaltic-Asbestos Coating after superstructure is in place.
 - A layer of Sub-Base of Crushed Rock (Mod.) Item 204, one (1) foot thick, 38 feet long shall be placed on the slope of all abutments. The edges of this area to be in line with the outside of the end posts and parallel to the centerline of roadway.
 - For estimating purposes the length of steel piles is assumed to be 48' for Abutment No. 1, 57' for Abutment No. 2 and 20' (average) for Abutment No. 4.
 - All piles shall be driven thru the fill, into the original ground and to refusal.

ESTIMATED QUANTITIES

ITEM NO.	DESCRIPTION	UNIT	ABUTMENT NO. 1				ABUTMENT NO. 2						
			NET	OVER-RUN	TOTAL	FINAL	NET	OVER-RUN	TOTAL	FINAL			
107	Structure Excavation	C.Y.	21	✓	-2	23	21	✓	-2	23	21	✓	
204	Sub-base of Crushed Rock (Mod.)	C.Y.	-6	✓	-10	-7	60	✓	-6	-10	-7	60	✓
222	Gravel Backfill	C.Y.	37	✓	+0	47	37	✓	+0	47	37	✓	
401-B	Concrete Class "B" (Mod.)	C.Y.	87	✓	-4	91	87	✓	-4	91	87	✓	
402	Reinforcing Steel	Lbs.	See Reinforcing Schedule Sheet No. 8										
407	Asphaltic-Asbestos Coating	S.Y.	-5	✓	-	-5	10	✓	-	-5	10	✓	
504	Steel Piling	L.F.	+152	✓	-	+152	1232	✓	-	+368	1200	✓	

ESTIMATED QUANTITIES

ITEM NO.	DESCRIPTION	UNIT	ABUTMENT NO. 3				ABUTMENT NO. 4						
			NET	OVER-RUN	TOTAL	FINAL	NET	OVER-RUN	TOTAL	FINAL			
107	Structure Excavation	C.Y.	-50	✓	-5	-55	21	✓	-2	23	21	✓	
204	Sub-base of Crushed Rock (Mod.)	C.Y.	-6	✓	-10	-7	60	✓	-6	-10	-7	60	✓
222	Gravel Backfill	C.Y.	19	✓	-5	24	37	✓	+0	47	37	✓	
401-B	Concrete Class B (Mod.)	C.Y.	+18	✓	-6	+12	134	✓	-4	+130	130	✓	
402	Reinforcing Steel	Lbs.	See Reinforcing Schedule Sheet No. 8										
407	Asphaltic-Asbestos Coating	S.Y.	-5	✓	-	-5	10	✓	-	-5	10	✓	
504	Steel Piling	L.F.	-	✓	-	-	480	✓	-	-480	676	✓	

IM 089-2(26)
This sheet for information only
BR 49 N & S

CONTRACT NO. 1

ABUTMENTS NO. 1, 2 AND 4
STATE OF VERMONT
DEPARTMENT OF HIGHWAYS

INTERSTATE PROJECT in the town of
WATERBURY
INTERSTATE OVER STA. 872+50
WATERBURY DAM RD. (REL.) STA. 1+70

THE CLARKESON ENGINEERING CO., INC.
CONSULTING ENGINEERS MASSACHUSETTS
BOSTON
SURVEYED BY: J.V.B. CHECKED BY: G.B.D.S. SCALE AS NOTED
DRAWN BY: A.R.C. IN CHARGE DATE 6-19-58
PROJECT NO. I-89-2(7) SHEET 1 240 OF 307