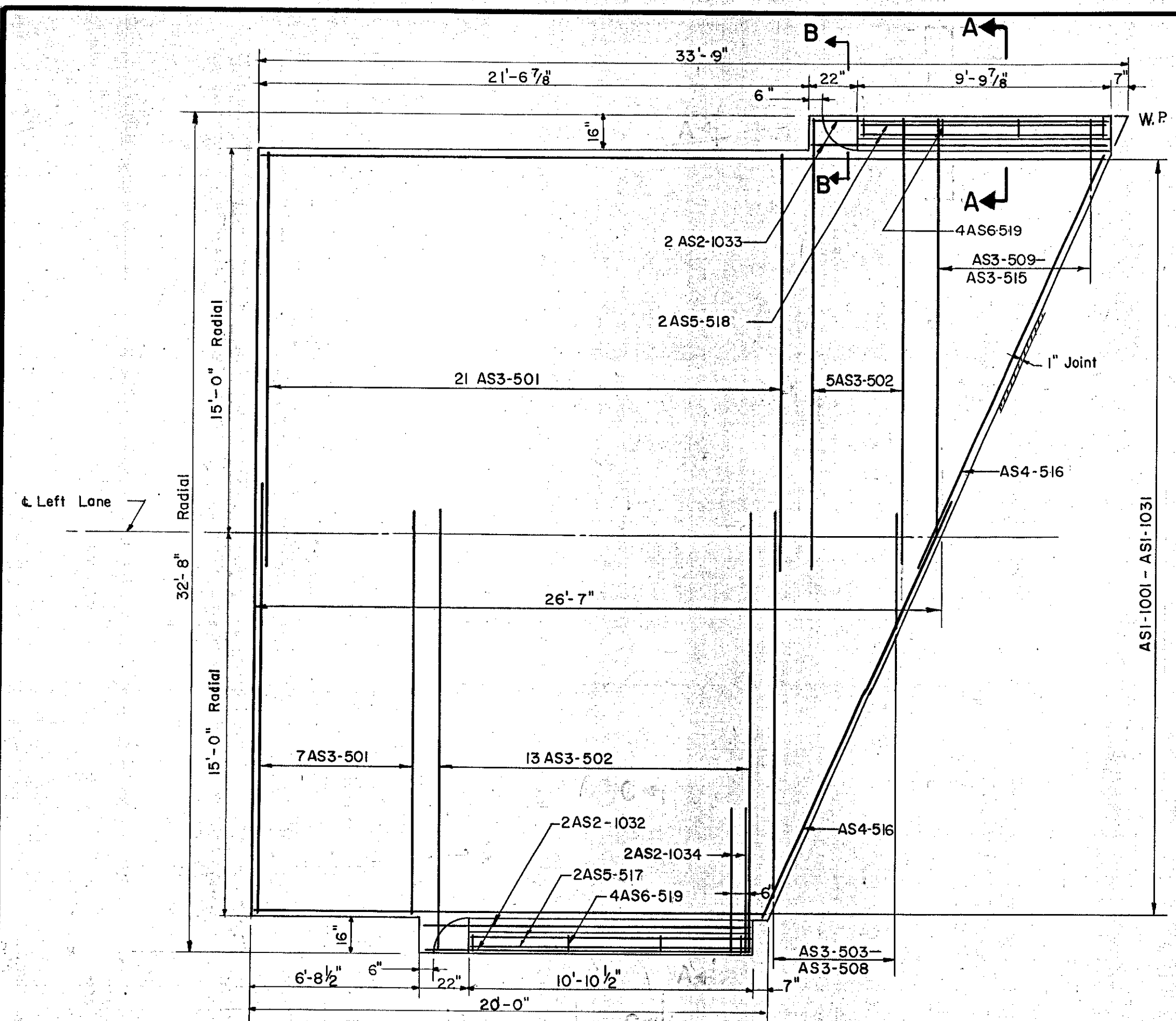
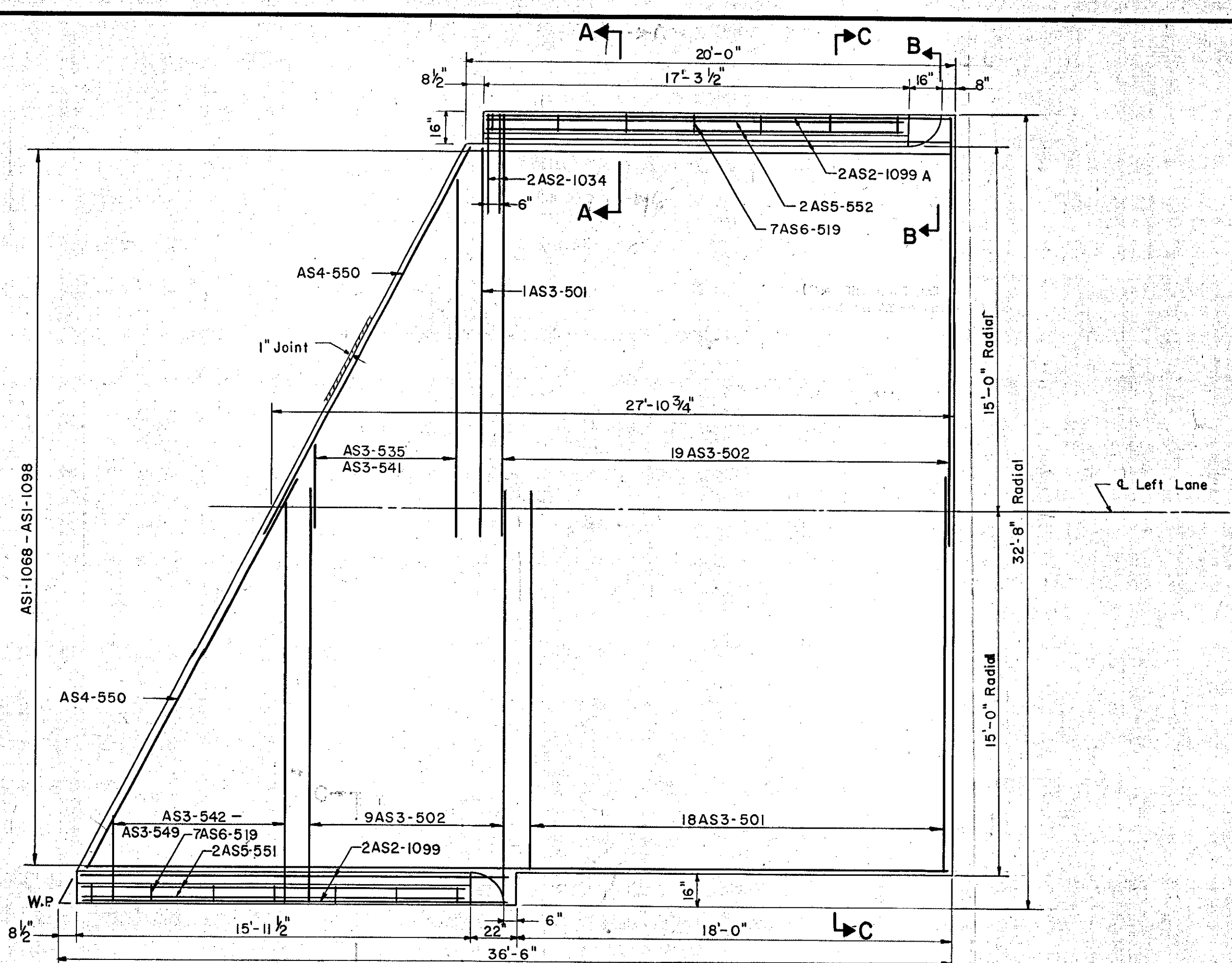


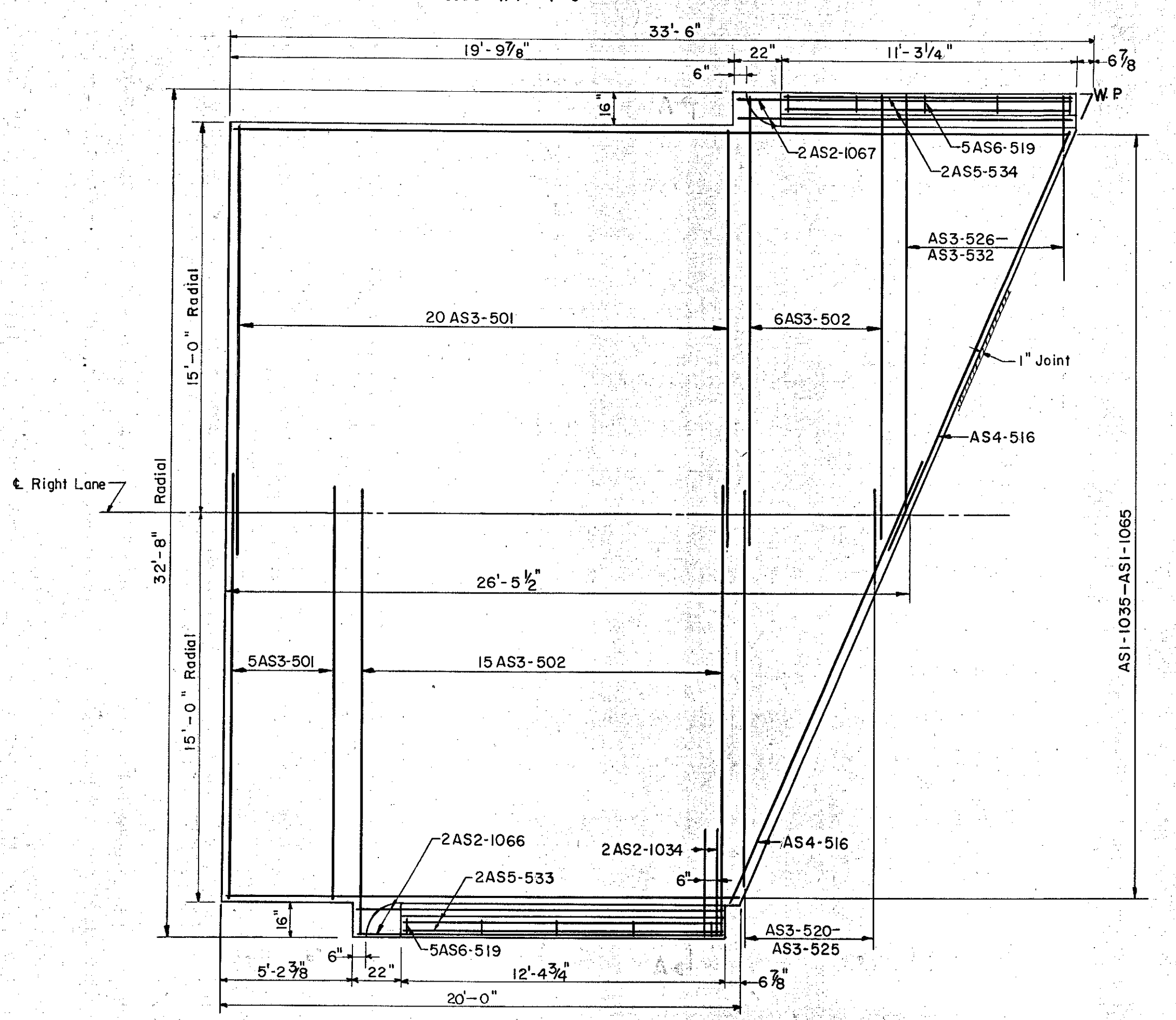
B. P. R. DIV. NO.	STATE	PROJECT NO.	SHEET NO.	TOTAL SHEETS
1	VT.	1-89-2(7)	25	30



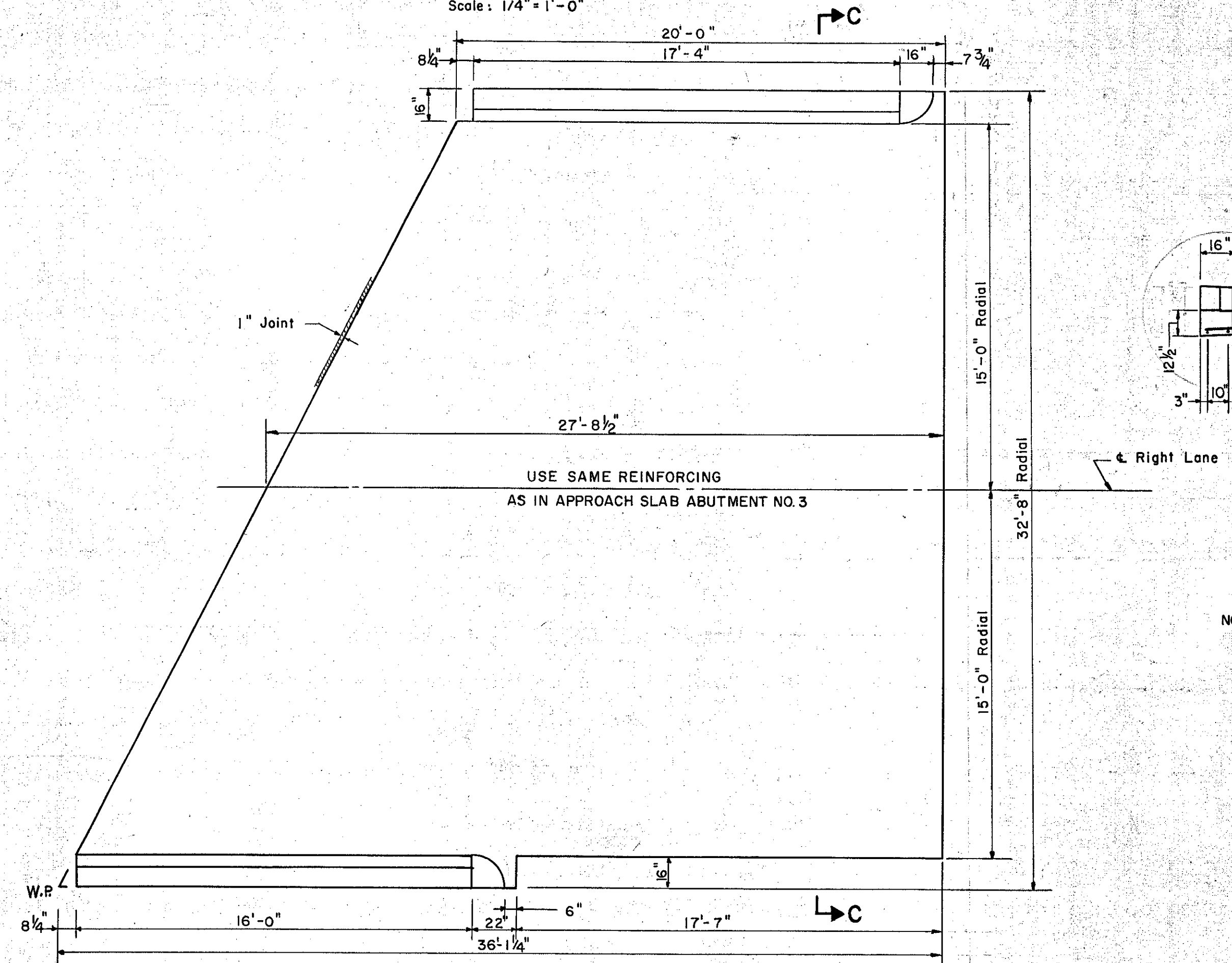
**APPROACH SLAB ABUTMENT NO. 1**  
Scale: 1/4" = 1'-0"



**APPROACH SLAB ABUTMENT NO. 3**  
Scale: 1/4" = 1'-0"

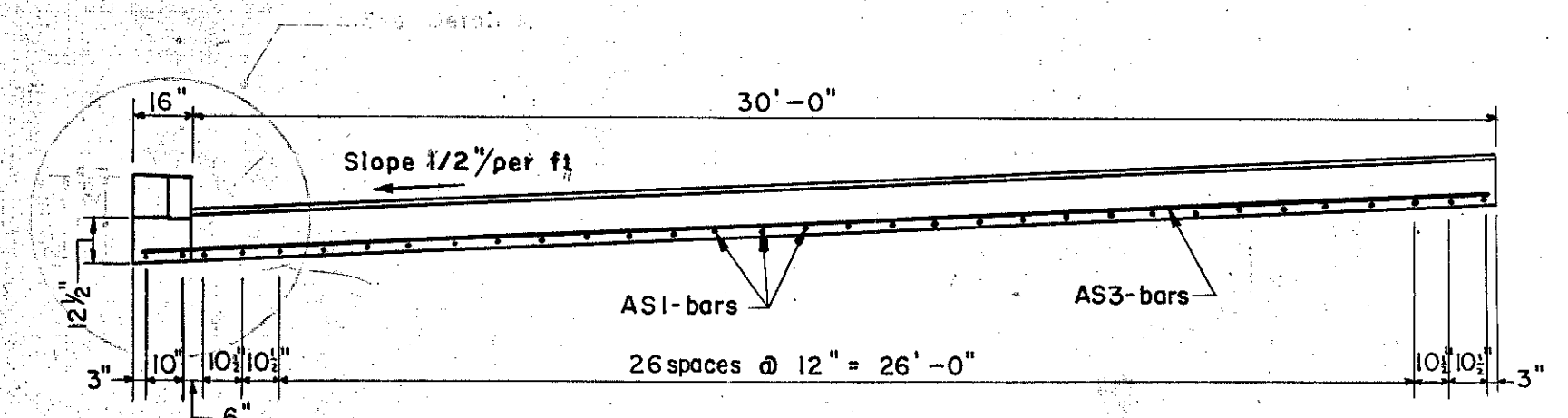


**APPROACH SLAB ABUTMENT NO. 2**  
Scale: 1/4" = 1'-0"



**APPROACH SLAB ABUTMENT NO. 4**  
Scale: 1/4" = 1'-0"

ITEM NO.	DESCRIPTION	UNIT	APPROACH SLABS			
			NET	OVERRUN	TOTAL	FINAL
361-B	Bit. Conc. Pavement	Ton	-41=	-6=	-47=	51 ✓
401-B	Concrete, Class 'B' (Mod.)	CY	137 ✓	-7=	-144=	137 ✓
402	Reinforcing Steel	LBS	See Reinforcing Steel Schedule			
556-C	Granite Bridge Curb (Type 1)	L.F.	See General Plan & Elevation Sheet No. 3			



**SECTION C-C**  
Scale: 1/4" = 1'-0"

NOTE: For Sections A-A & B-B See Standard Detail Sheet SB-AS-30° Skew-57.

IM 089-2(26)  
This sheet for information only  
**BR 48 N & S**

CONTRACT NO. 1

**APPROACH SLABS**  
**STATE OF VERMONT**  
**DEPARTMENT OF HIGHWAYS**

INTERSTATE PROJECT in the town of  
**WATERBURY**

INTERSTATE OVER STA. 865+24  
**LITTLE RIVER** STA. 5+15

THE CLARKESON ENGINEERING CO. INC.  
CONSULTING ENGINEERS  
BOSTON MASSACHUSETTS

SURVEYED BY: [ ] CHECKED BY B.K. & J.B. [ ] SCALE AS SHOWN  
DRAWN BY J.K. [ ] IN CHARGE J.V.B. [ ] DATE 8-20-57

PROJECT NO. 1-89-2(7) SHEET 230 OF 307