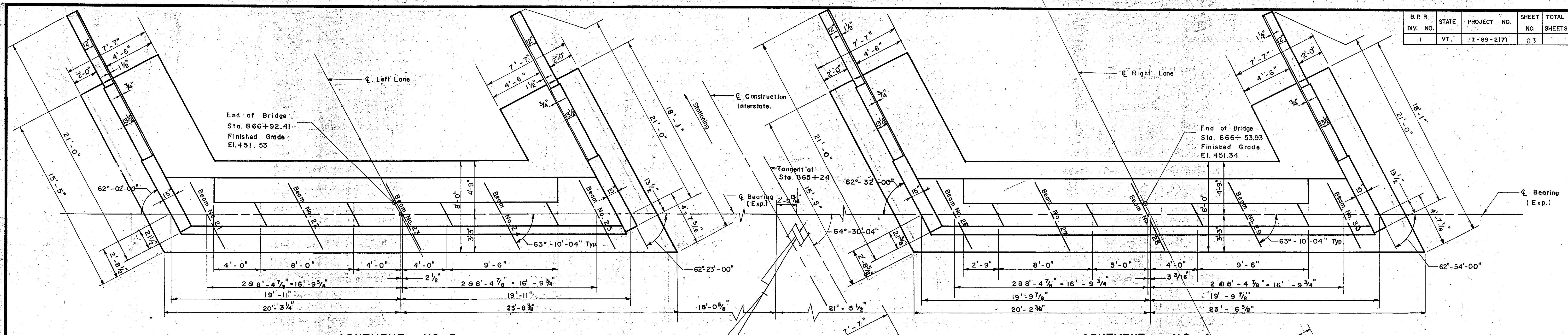
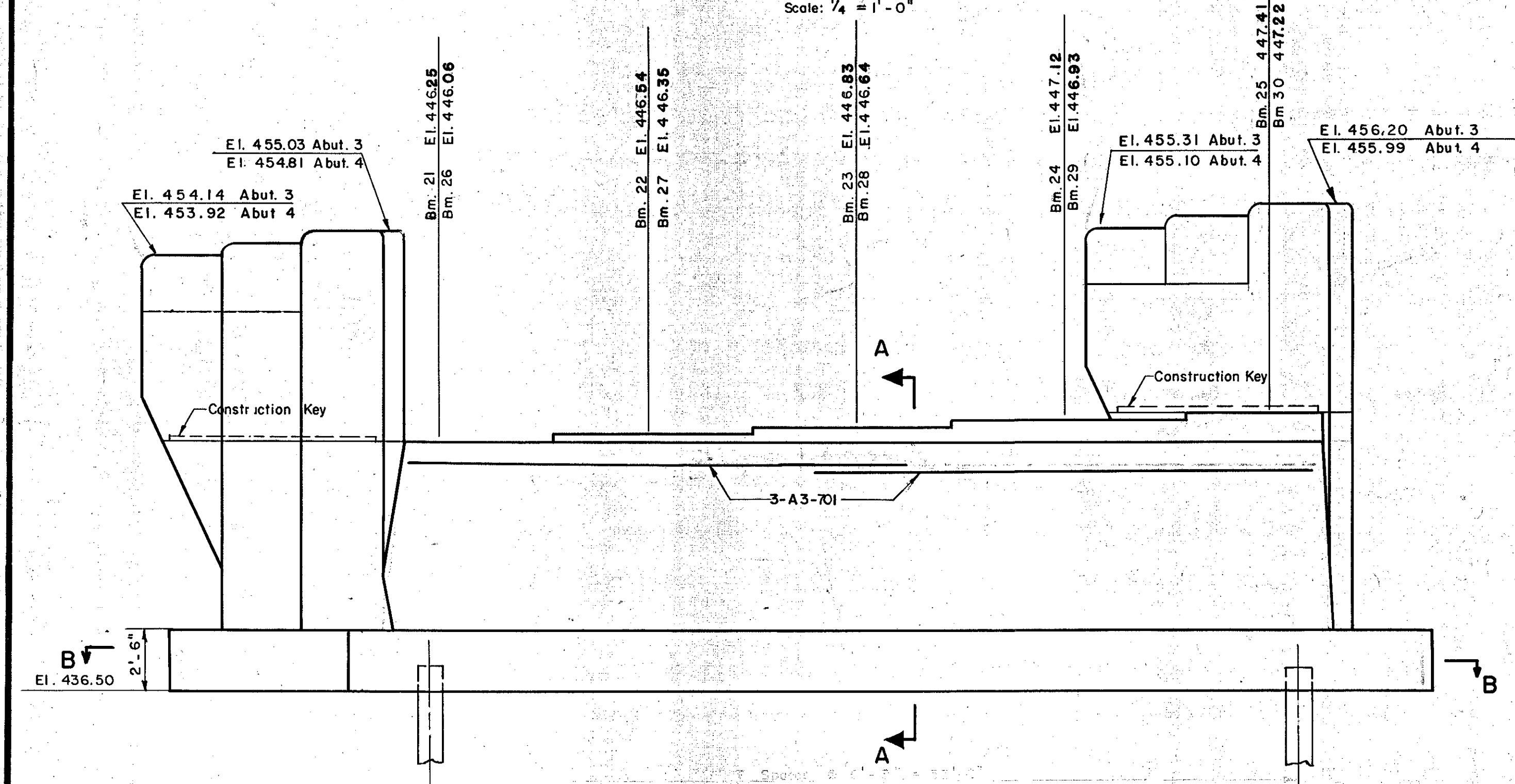


B. R. R.	STATE	PROJECT NO.	SHEET NO.	TOTAL SHEETS
1	VT.	I-89-2(7)	23	23

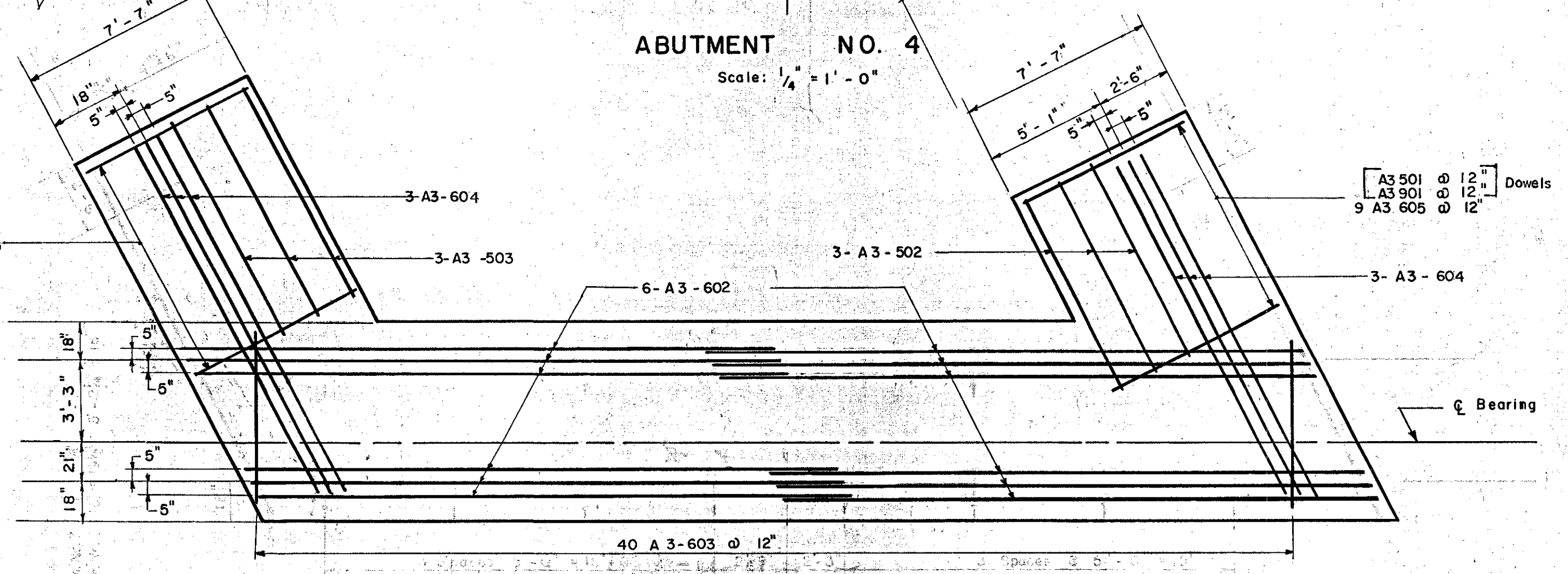


**ABUTMENT NO. 3**  
Scale: 1/4" = 1'-0"

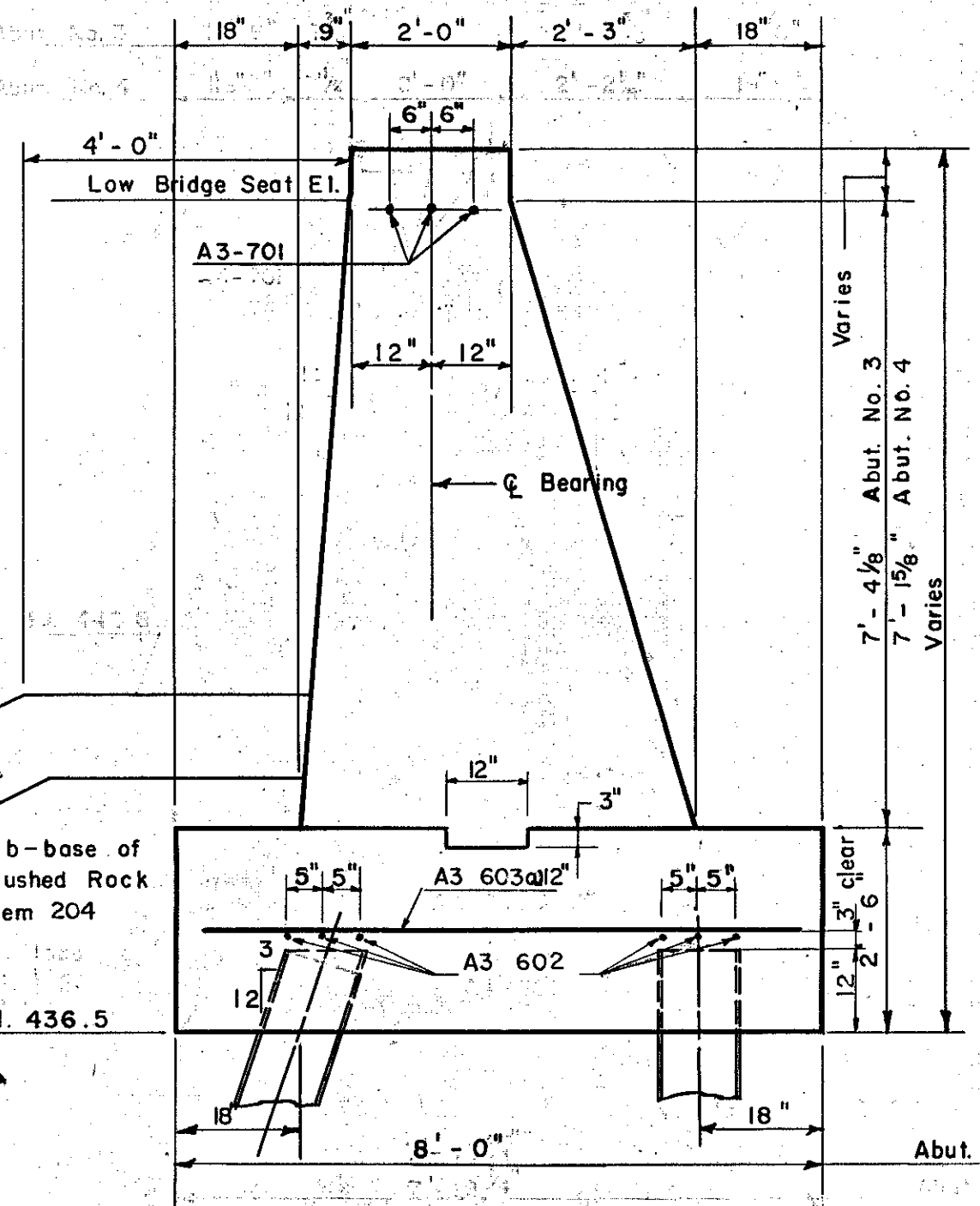
**ABUTMENT NO. 4**  
Scale: 1/4" = 1'-0"



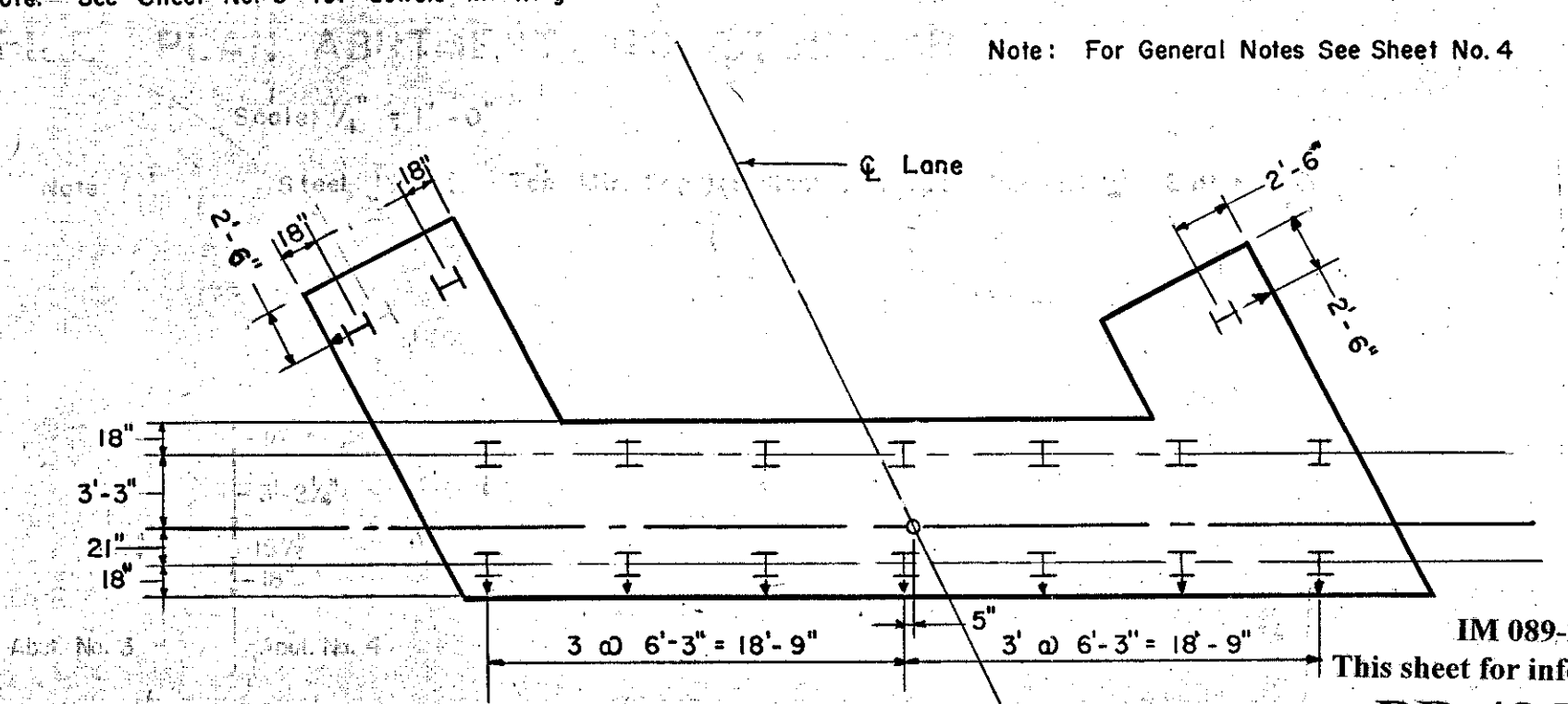
**ELEVATION ABUTMENT NO. 3**  
**ELEVATION ABUTMENT NO. 4 (SIMILAR, EXCEPT AS NOTED)**  
Scale: 1/4" = 1'-0"  
Note: See Sheet No. 6 for Wingwall Section.



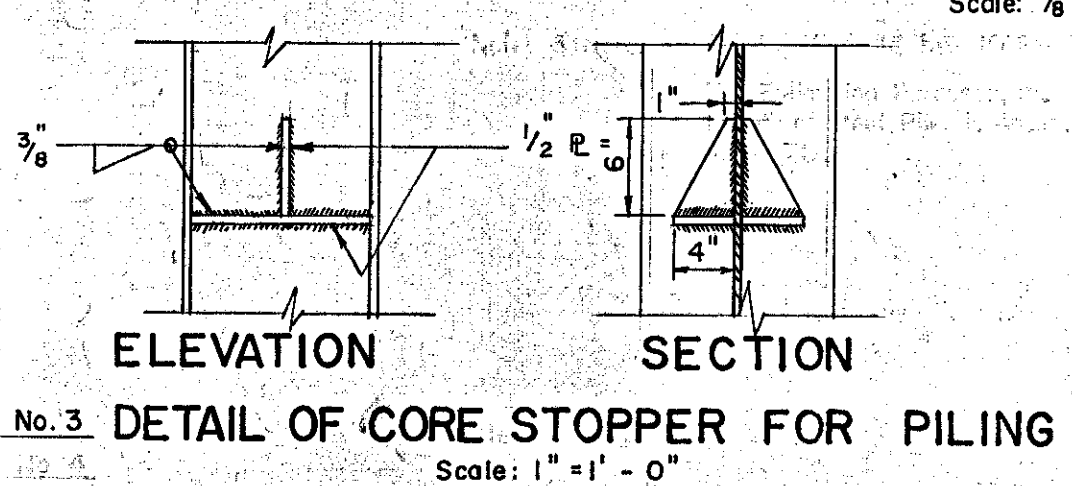
**SECTION B-B**  
Scale: 1/4" = 1'-0"  
Note: See Sheet No. 6 for dowels in Wingwall Section.



**SECTION A-A**  
Scale: 1/2" = 1'-0"  
Note: See Sheet No. 6 for Limits of Gravel Backfill.



**PILE PLAN ABUTMENT NO. 4**  
**PILE PLAN ABUTMENT NO. 3 (SIMILAR, EXCEPT AS NOTED)**  
Scale: 1/8" = 1'-0"



**ELEVATION SECTION**  
**DETAIL OF CORE STOPPER FOR PILING**  
Scale: 1" = 1'-0"  
Note: Core Stoppers to be used if so designated by the Engineer at the time of driving the piling. Payment for Core Stoppers, if used, shall be included under Item No. 504, 'Steel Piling'.

**ESTIMATED QUANTITIES**

ITEM NO.	DESCRIPTION	UNIT	ABUTMENT NO. 3				ABUTMENT NO. 4			
			NET	OVER-RUN	TOTAL	FINAL	NET	OVER-RUN	TOTAL	FINAL
107	Structural Excavation	C.Y.	23	2	25	23	2	25	23	
2C4	Sub-base of Crushed Rock (Mod.)	C.Y.	29	4	33	38	29	4	33	
2	Gravel Backfill	C.Y.	66	14	80	48	53	101	107	
40-B	Concrete, Class 'B' (Mod.)	C.Y.	107	5	112	109	104	5	109	
4C2	Reinforcing Steel	LBS	See Reinforcing Schedule, Sheet No. 12							
407	Asphaltic-Asbestos Coating	SY	8	0	8	8	8	0	8	
504	Steel Piling	LF	1190	0	1190	859	1190	0	1190	

IM 089-2(26)  
This sheet for information only  
**BR 48 N & S**  
CONTRACT NO. 1  
**ABUTMENTS NO. 3 AND NO. 4**  
STATE OF VERMONT  
DEPARTMENT OF HIGHWAYS  
INTERSTATE PROJECT in the town of  
**WATERBURY**  
INTERSTATE OVER STA. 865+24  
LITTLE RIVER OVER STA. 5+15  
THE CLARKESON ENGINEERING CO. INC.  
BOSTON, MASSACHUSETTS  
SURVEYED BY B.S.S. CHECKED BY B.K.A.J.B. SCALE AS NOTED  
DRAWN BY B.S.S. IN CHARGE J.V.B. DATE 8-20-57  
PROJECT NO. I-89-2(7) SHEET 228 OF 307