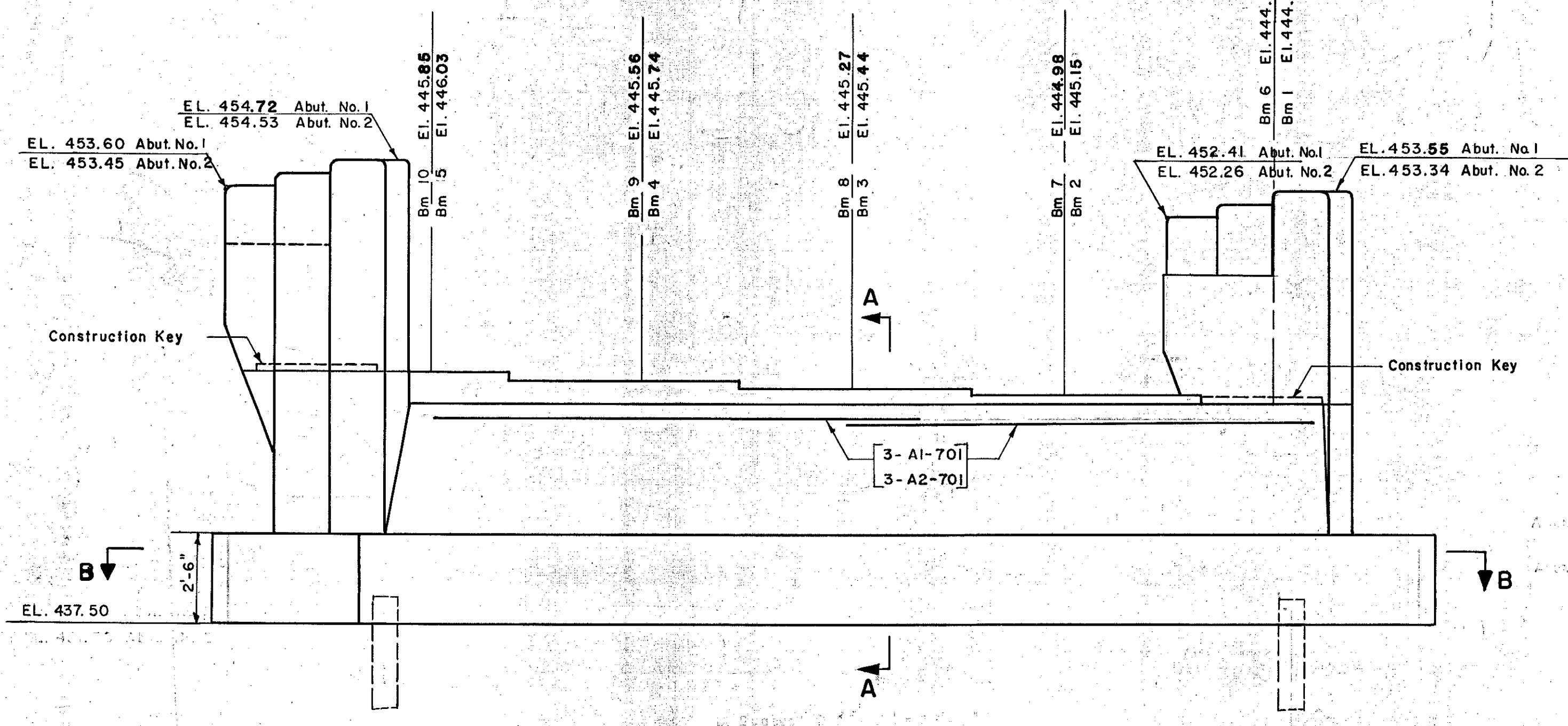


ABUTMENT NO. 2
Scale: 1/4" = 1'-0"

ABUTMENT NO. 1
Scale: 1/4" = 1'-0"

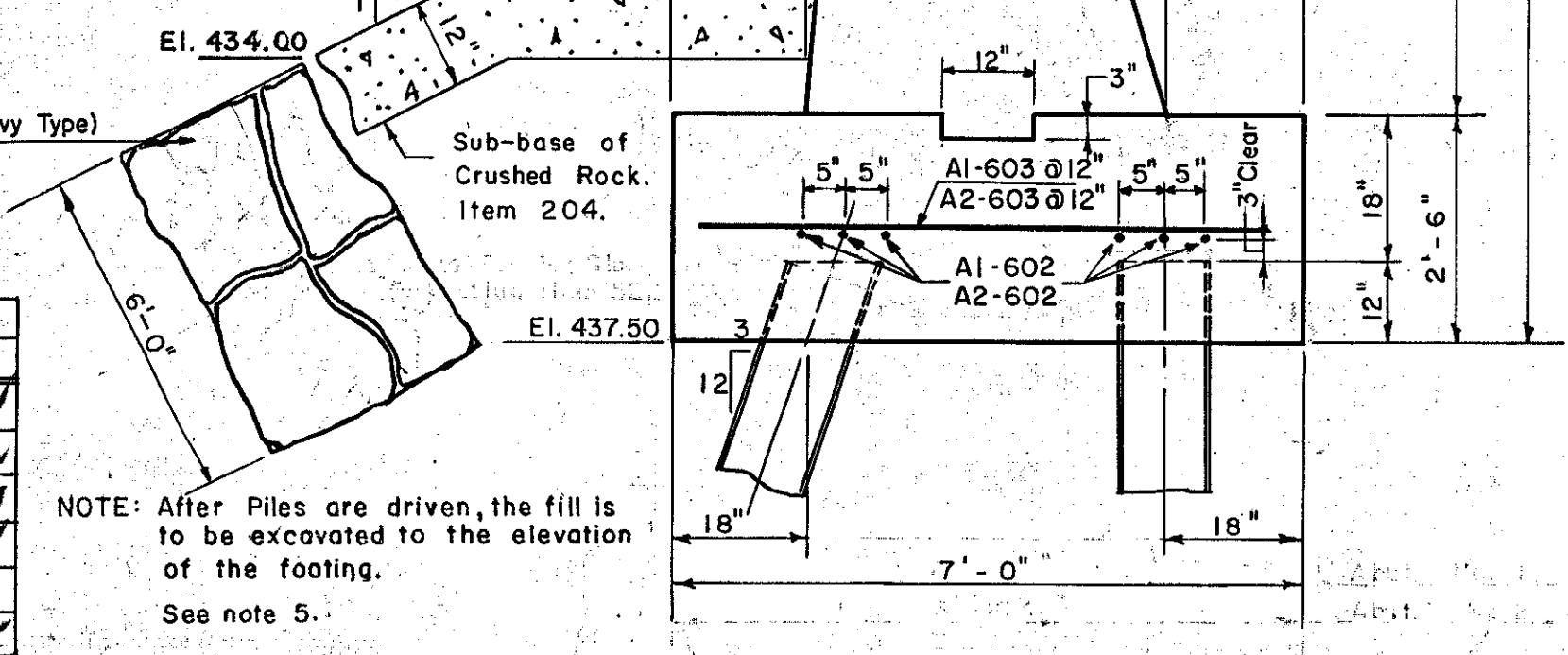


ELEVATION ABUTMENT NO. 2
ELEVATION ABUTMENT NO. 1 (SIMILAR EXCEPT AS NOTED)
Scale: 1/4" = 1'-0"

NOTE: See Sheet No. 6 For Wingwall Section
Bars in Abutment No. 1 to be marked A1
Bars in Abutment No. 2 to be marked A2

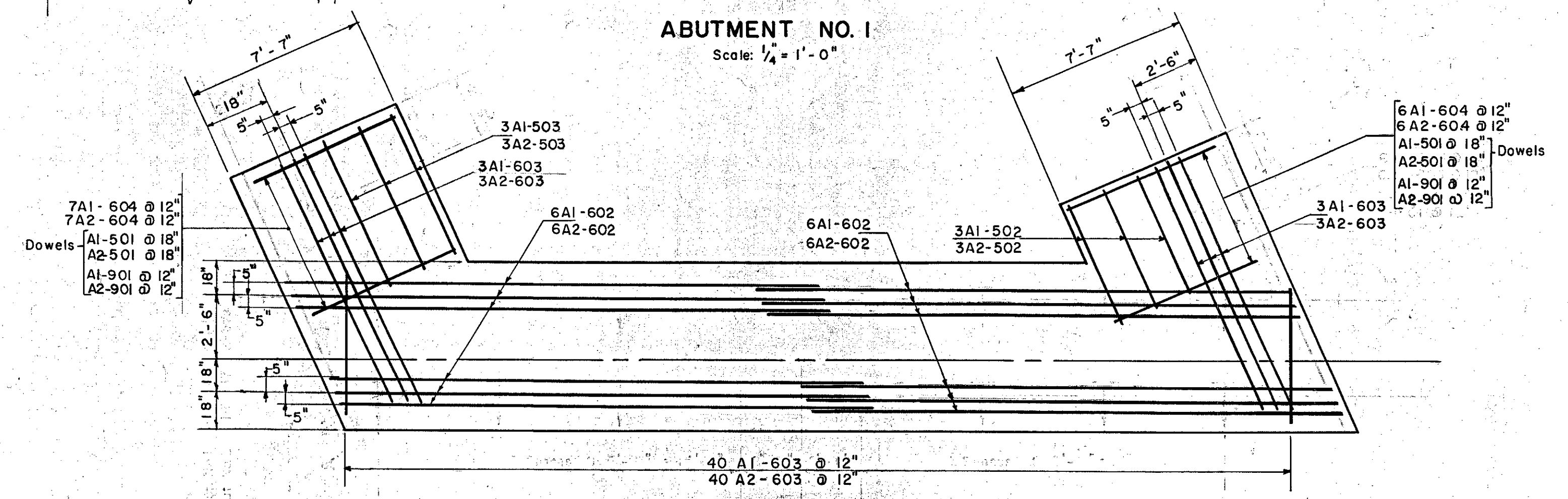
ESTIMATED QUANTITIES

ITEM NO.	DESCRIPTION	UNIT	ABUTMENT NO. 1				ABUTMENT NO. 2			
			NET	OVER-RUN	TOTAL	FINAL	NET	OVER-RUN	TOTAL	FINAL
107	Structure Excavation	C.Y.	19	2	21	18	19	2	21	19
204	Sub-base of Crushed Rock (Mod.)	C.Y.	32	5	37	52	32	5	37	53
222	Gravel Backfill	C.Y.	37	4	41	30	37	4	41	30
402B	Concrete Class B (Mod.)	C.Y.	70	4	74	72	73	4	77	74
402	Reinforcing Steel	LBS	See Reinforcing Steel Schedule Sheet No. 12							
407	Asphaltic-Asbestos Coating	S.Y.	8	0	8	8	8	0	8	8
504	Steel Piling	L.F.	190	0	190	858	190	0	190	886



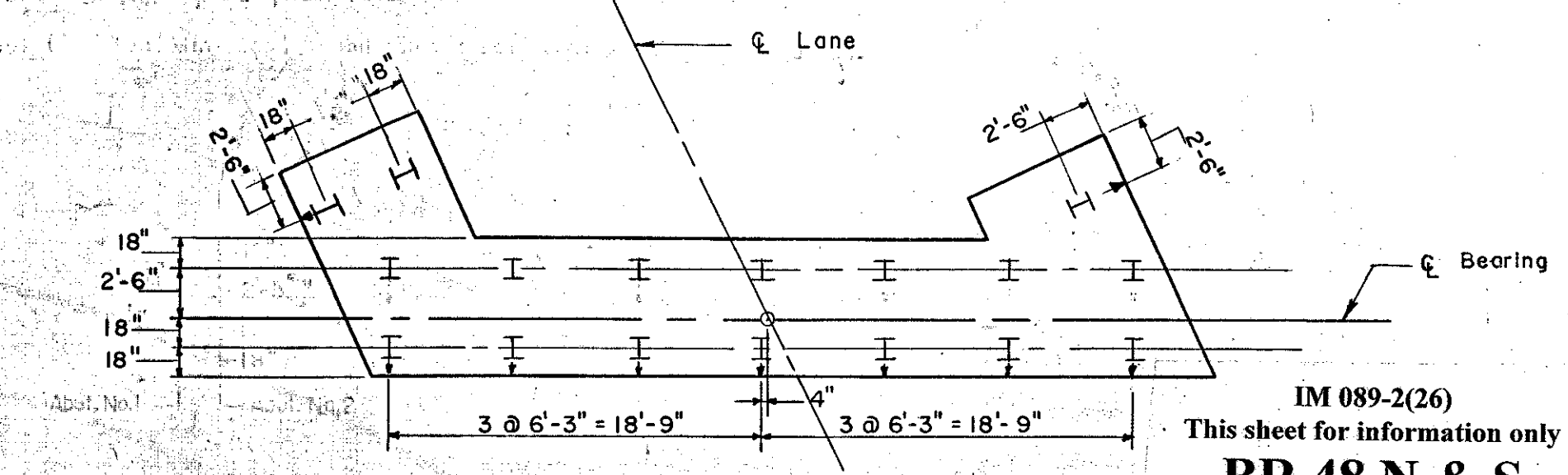
SECTION A-A
Scale: 1/2" = 1'-0"

Note: See Sheet No. 6 for Limits of Gravel Backfill



SECTION B-B
Scale: 1/4" = 1'-0"

NOTE: See Sheet No. 6 For Dowels in Wingwall Footings



PILE PLAN ABUTMENT NO. 1 & NO. 2
Scale: 1/8" = 1'-0"

- NOTES:
- Steel Piles to be 10BP42, 35 Ton Design Load. Indicated "thus" Vertical, "x" Battered.
 - For Estimating purposes, the Length of Steel Piles is assumed to be 70' using 1/2" diameter Rocker Piles.
 - Slope all bridge seats 1/2" per ft.
 - Entire exposed surface of the Bridge Seat to be covered with 1/2" Asphaltic-Asbestos coating after superstructure is in place.
 - Prior to driving the piles, rock-free fill shall be placed under the abutment area to approximately the level of the pile cutoff elevation, and with a surface area at least (2) two feet outside the abutment.
 - A layer of Sub-base of Crushed Rock (Mod.) Item 204 one (1) foot thick shall be placed 21 feet in front of the Abutments. The edges of the area to be in line with the outside of the end posts and parallel to the centerline of the roadway.
 - Stone Fill (Heavy Type) Item 521 shall be placed 96 feet in front of the Abutments to the limits shown on the Plan of Sheet No. 1.

CONTRACT NO. 1

ABUTMENTS NO. 1 AND NO. 2

STATE OF VERMONT
DEPARTMENT OF HIGHWAYS

INTERSTATE PROJECT in the town of
WATERBURY

INTERSTATE OVER **STA. 865+24**

LITTLE RIVER OVER **STA. 5+15**

THE CLARKSON ENGINEERING CO. INC.
BOSTON MASSACHUSETTS

SURVEYED BY B.S.S. CHECKED BY B.K.B.J.B. SCALE AS NOTED
DRAWN BY B.S.S. IN CHARGE J.V.B. DATE 9-20-57

PROJECT NO. I-89-2(7) SHEET 227 OF 307