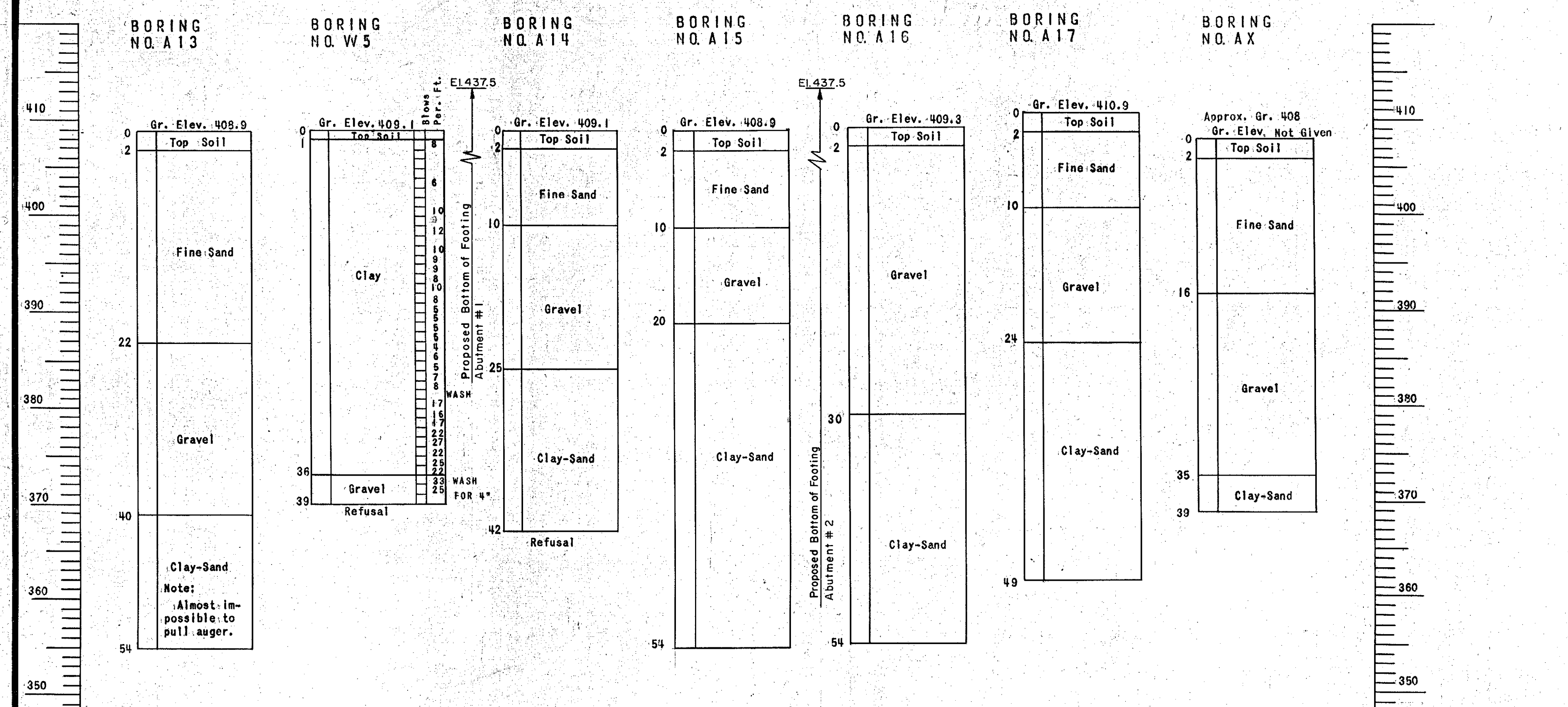
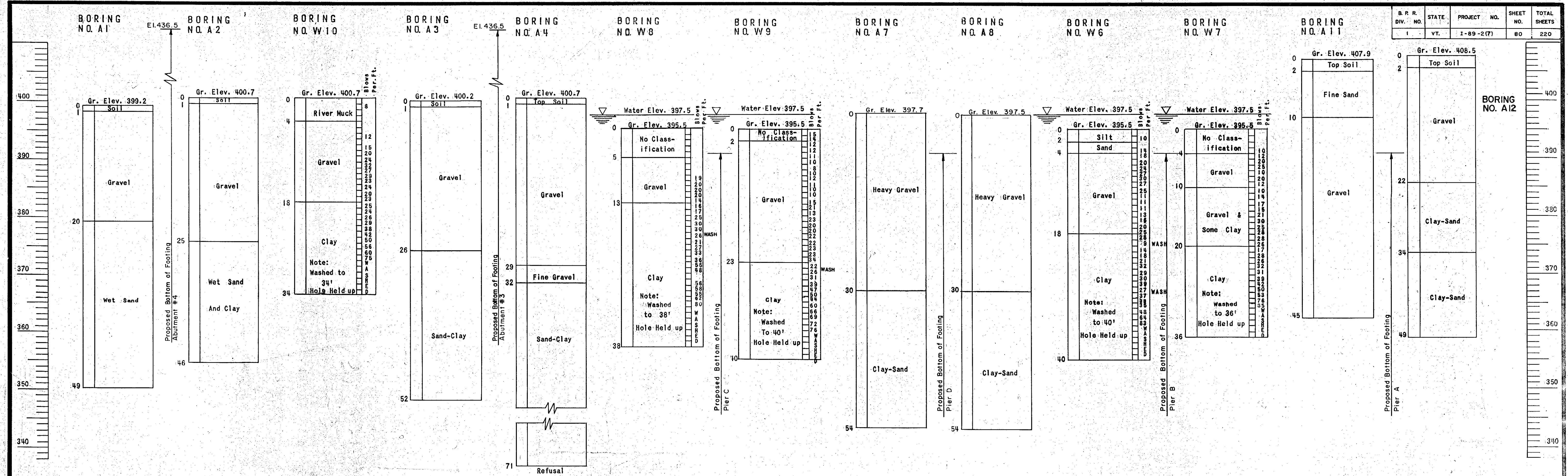


B. P. R. DIV. NO.	STATE	PROJECT NO.	SHEET NO.	TOTAL SHEETS
1	Vt.	1-89-2(7)	80	220



BORING LOG
 Scale: 1/8" = 1' - 0"

Note: Auger borings prefixed with letter "A"
 Wash borings prefixed with letter "W"
 For wash borings:
 Weight of hammer = 350#
 Drop of hammer = 24"
 Diameter of Casing = 2 1/2"
 Thickness of Casing = 3/8"

For Location of Borings, See Sheet 1

IM 089-2(26)
 This sheet for information only
BR 48 N & S

CONTRACT NO. 1

BORING LOG

STATE OF VERMONT
 DEPARTMENT OF HIGHWAYS

INTERSTATE PROJECT in the town of
WATERBURY

INTERSTATE OVER STA. 865 + 24
 LITTLE RIVER OVER STA. 5 + 15

THE CLARKESON ENGINEERING CO. INC.
 CONSULTING ENGINEERS

BOSTON MASS.
 SURVEYED BY: R.J.F. CHECKED BY: B.K.B. DATE: 8-20-57
 IN CHARGE: J.V.B. SCALE: AS SHOWN
 PROJECT NO. 1-89-2(7) SHEET 225 OF 307