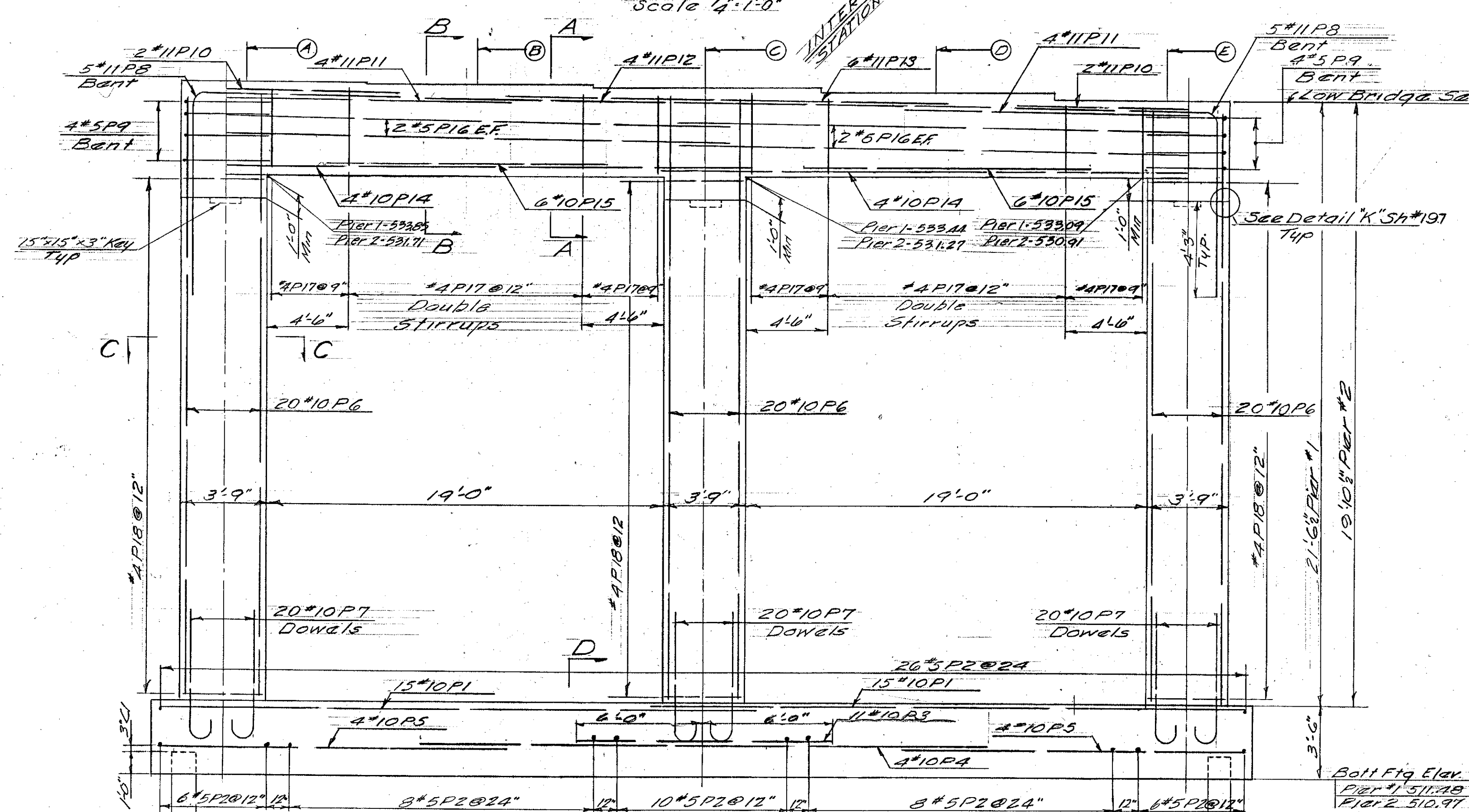
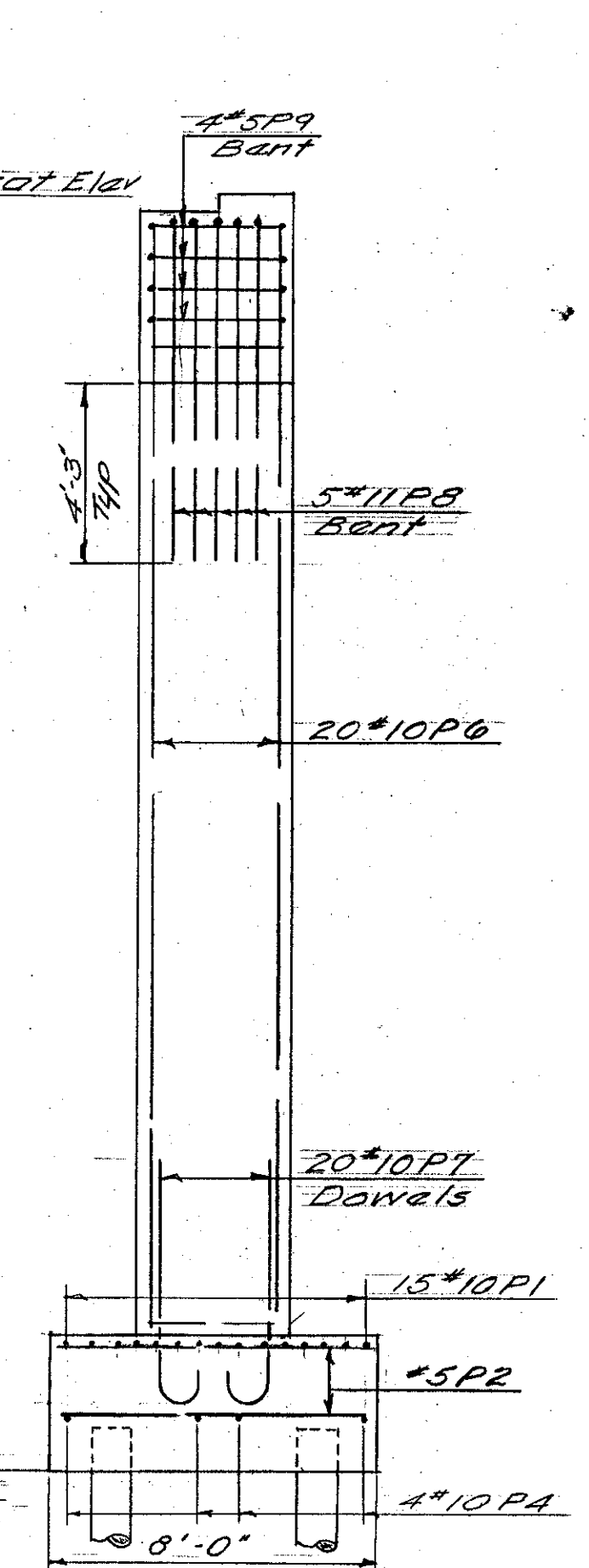


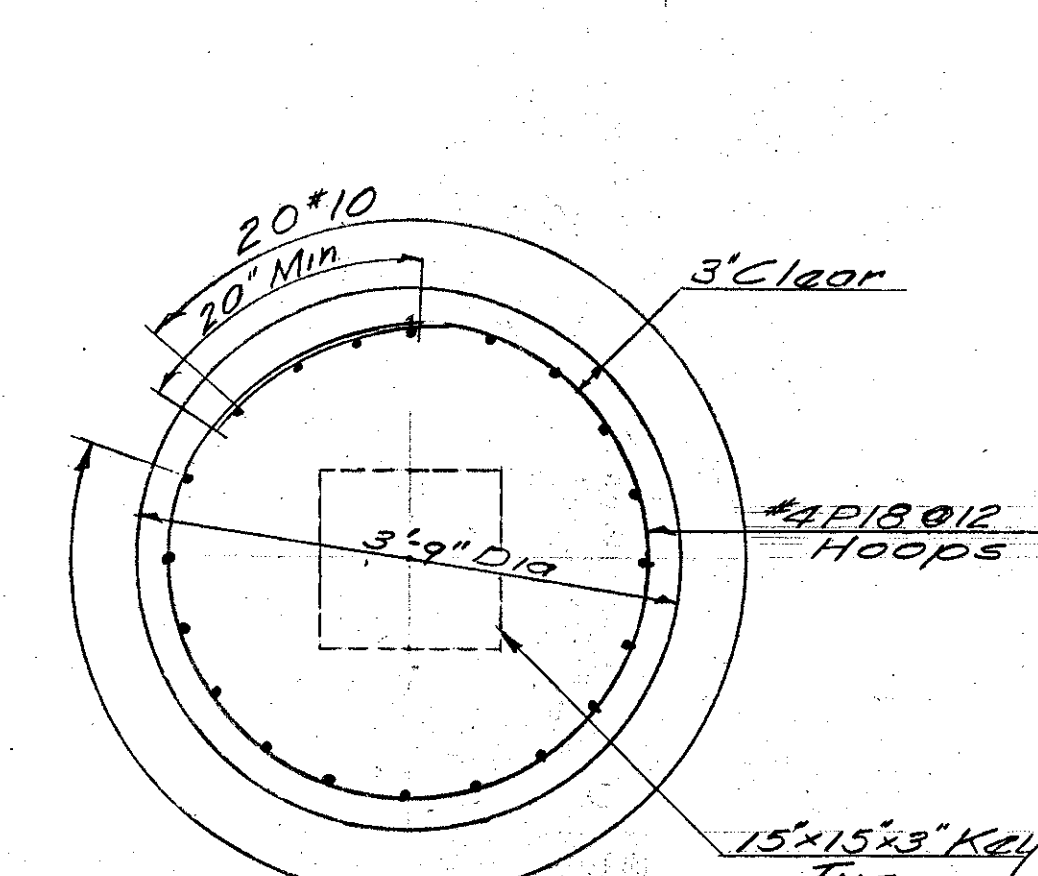
HALF SECTION SHOWING TOP REINFORCING  
HALF SECTION SHOWING BOTTOM REINFORCING



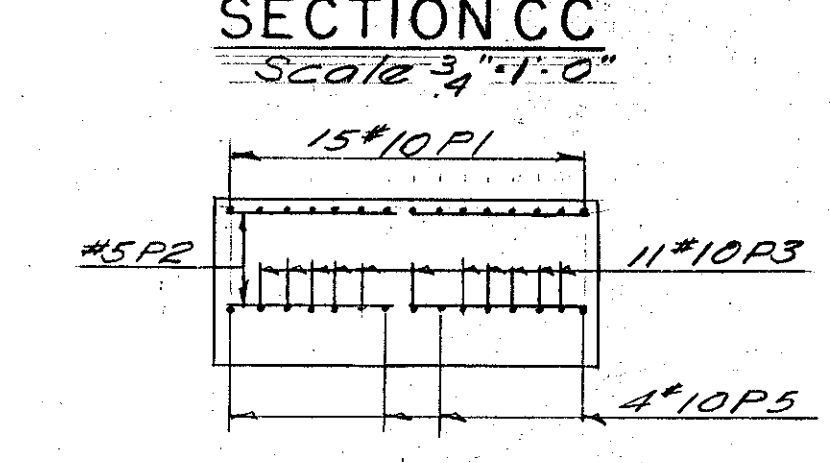
ELEVATION Scale 1/4"=1'-0"



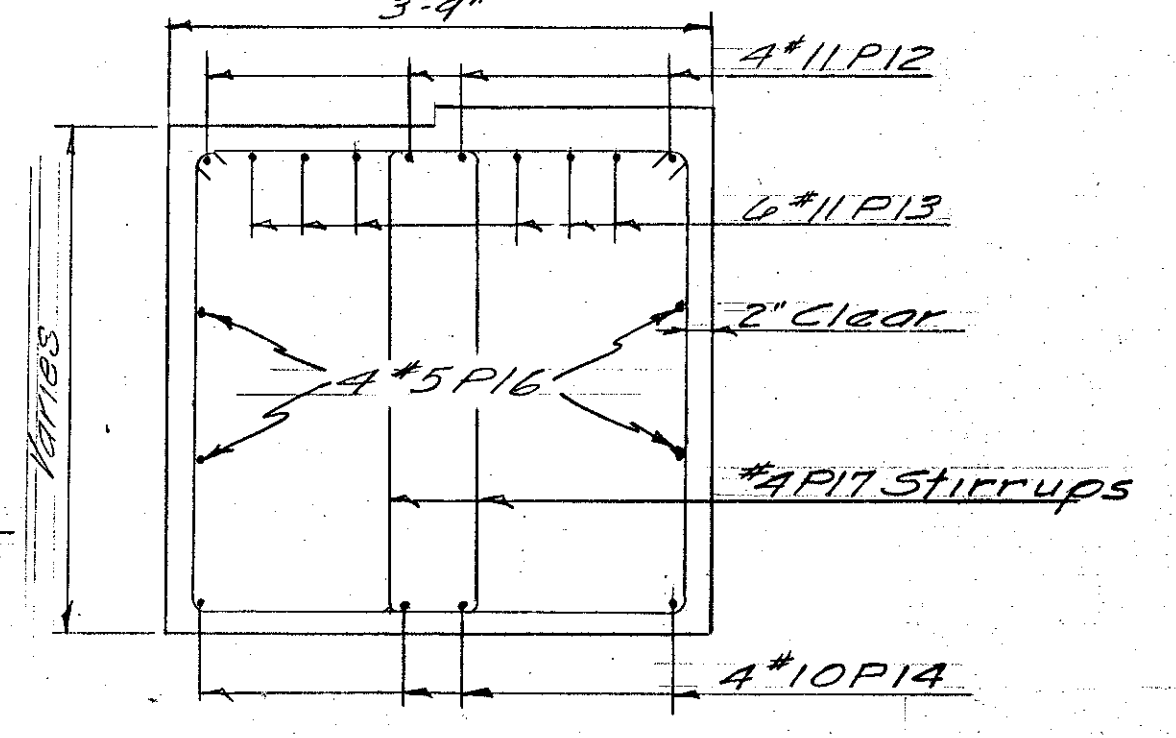
END ELEVATION Scale 1/4"=1'-0"



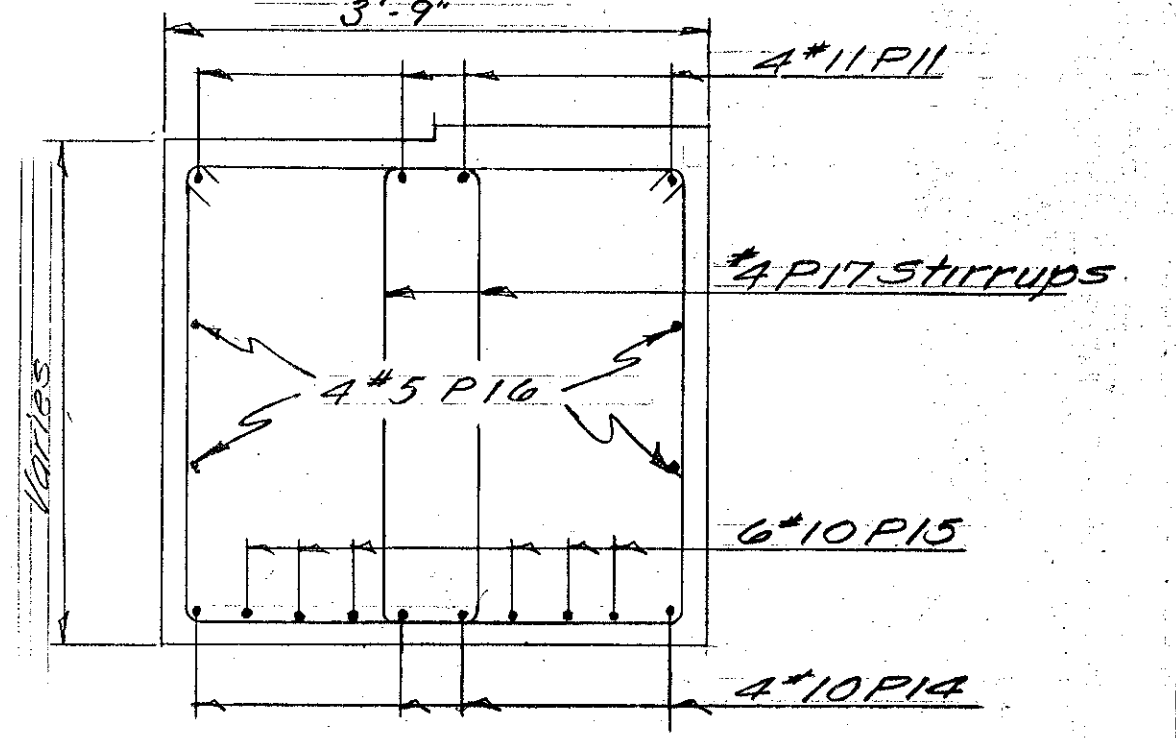
SECTION CC Scale 3/4"=1'-0"



SECTION D-D Scale 1/4"=1'-0"

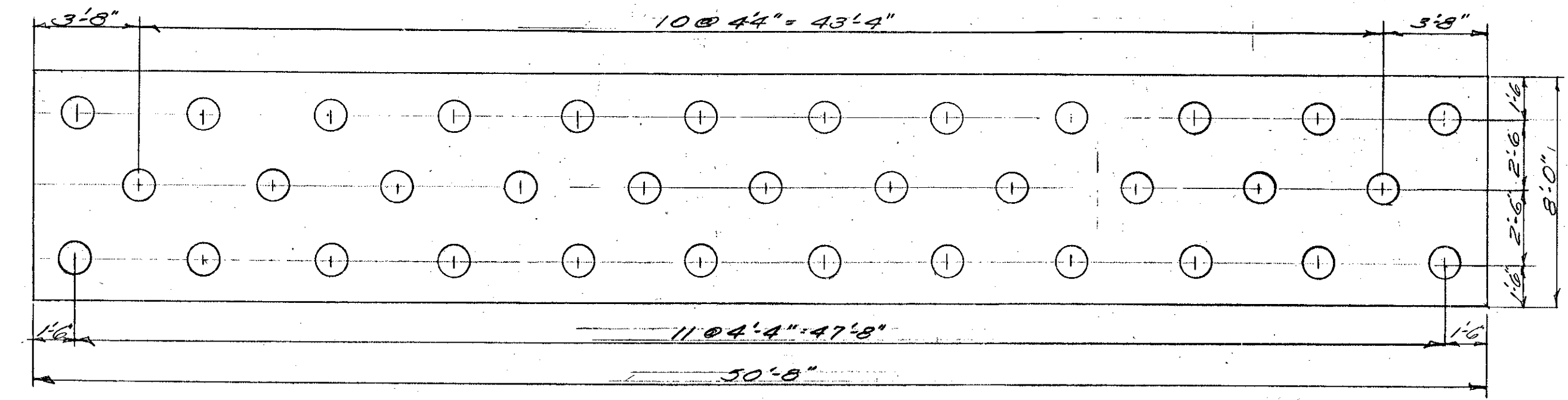


SECTION AA Scale 3/4"=1'-0"



SECTION BB Scale 3/4"=1'-0"

- NOTES**
- For General notes see Sh #136
  - For Bearing Devices and Anchor Bolts see Detail 'E' Sh #197
  - For Pile Shoes see Detail 'F' Sh #197
  - Reinforcing in top of Pier Cap shall be spaced to pass anchor bolts, maintaining minimum spacing requirements



PILE PLAN Scale 1/4"=1'-0"

BEARING ELEVATIONS						
W.B.	BEARING	A	B	C	D	E
PIER #1	EAST	537.64	537.56	537.39	537.11	536.75
	WEST	537.42	537.33	537.16	536.88	536.52
PIER #2	EAST	535.35	535.26	535.07	534.78	534.41
	WEST	535.28	535.19	535.00	534.71	534.34

		NEAR	ROUND
407	Asphaltic Asbestos Coating #1 SY	22	
407	" " " #2 SY	22	
401B	Class 'B' Conc. (Mod) #1 CY	100	105
401B	" " " #2 CY	99	104
502B	Treated Timber Piles #1 LF	1400	
502B	" " " #2 LF	1400	
402	Reinf. Steel #1 LB	19,101	19,101
402	" " " #2 LB	18,600	18,600

IM 089-2(26)  
This sheet for information only  
**BR 43 N & S**

STATE OF VERMONT  
DEPARTMENT OF HIGHWAYS

INTERSTATE PROJECT in the towns of  
BERLIN - MONTPELIER - MIDDLESEX  
**OVERPASS STA. 314+00. STRUCTURE #4  
WESTBOUND PIER DETAILS.**

BOSWELL ENGINEERING CO.  
CONSULTING ENGINEERS  
RICHFIELD PARK, N.J.

DRAWN BY: *RAB* CHECKED BY: *MJC* SCALE: AS SHOWN  
IN CHARGE: *KD* DATE: *AUG. 1957*

PROJECT NO.: 89-2-131 SHEET 219 OF 307