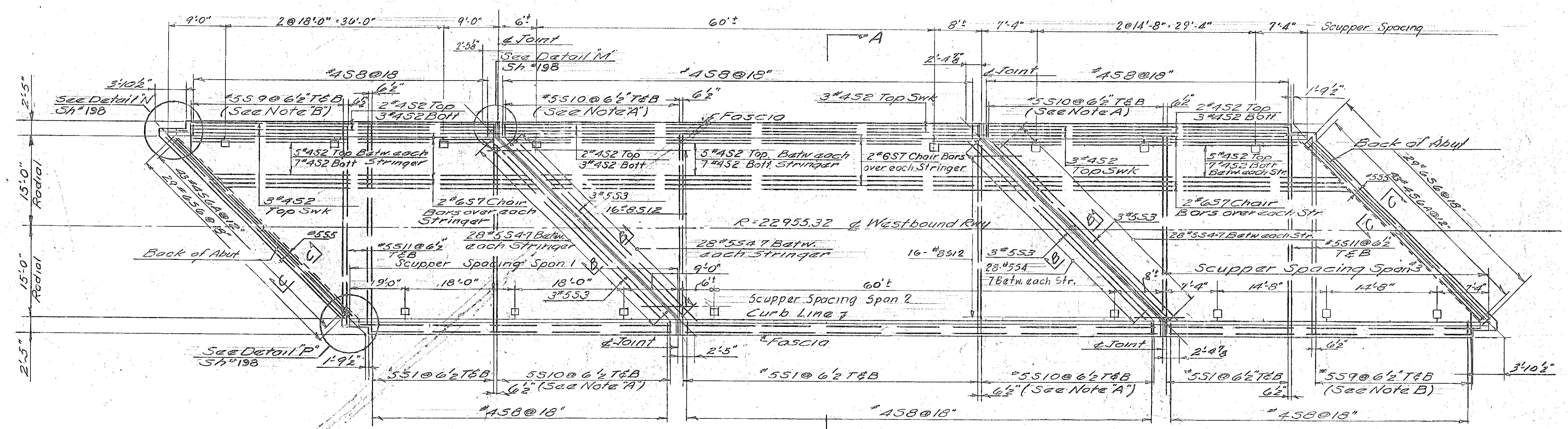
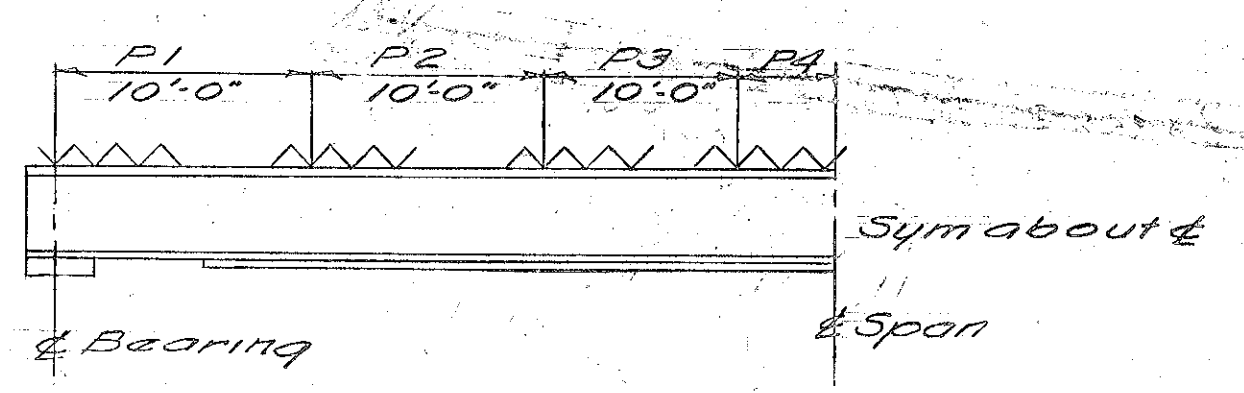


FRAMING PLAN  
Scale 3/32" = 1'-0"



REINFORCING PLAN  
Scale 3/32" = 1'-0"

- NOTE:**
1. For General Notes see Sh. #136
  2. For Bearing Devices and Anchor Bolts see Detail 'E' Sh. #197
  3. For Cover Plates see Detail 'A' Sh. #197
  4. For Scuppers see Detail 'B' Sh. #197
  5. For Spiral Welds see Detail 'S' Sh. #197
  6. For Curbs see Details '5' Sh. #198
  7. For Section 'AA' see Sh. #198
  8. For Section 'BB' see Sh. #198
  9. For Section 'CC' see Sh. #198
  10. For Bridge Railing see Details '5' & 'T' Sh. #198
  11. Scupper Spacing may be changed in the field by the Engineer.
  12. For Alternate Bridge Railing see Sh. #199



SPIRAL PITCH

STRINGER SCHEDULE									
Stringer Mark	No. Req'd	Dist. C-C Bearings	Length of Beam	Length of Bottom Cover R.	D.L. Δ	Spiral Pitch			
						P1	P2	P3	P4
S1	1	51'-2"	53'-3"	—	3'-1 1/2"	4'-2"	6'-2"	11'-2"	—
S2	3	51'-2"	52'-5"	29'-3"	3'-1 1/2"	4'-2"	6'-2"	11'-2"	—
S3	1	51'-2"	53'-3"	—	3'-1 1/2"	4'-2"	6'-2"	11'-2"	—
S4	1	71'-2"	73'-10"	51'-9"	1'-2"	2'-8"	4'-0"	5'-8"	13'-0"
S5	3	71'-2"	72'-8"	51'-9"	1'-2"	2'-8"	4'-0"	5'-8"	13'-0"
S6	1	71'-2"	73'-10"	51'-9"	1'-2"	2'-8"	4'-0"	5'-8"	13'-0"
S7	1	41'-2"	43'-3"	—	3'-1 1/2"	4'-2"	6'-2"	11'-2"	—
S8	3	41'-2"	42'-8"	—	3'-1 1/2"	4'-2"	6'-2"	11'-2"	—
S9	1	41'-2"	43'-3"	—	3'-1 1/2"	4'-2"	6'-2"	11'-2"	—

- NOTE:**
- A. #10 bars vary from 2'-3" to 32'-0" in 6'-2" increments (8 of each size req'd)
  - B. #9 bars vary from 3'-9" to 32'-0" in 6'-2" increments (4 of each size req'd)

**ESTIMATE OF QUANTITIES**

ITEM	DESCRIPTION	UNIT	NEAT	ROUND
401B	Class B Concrete (Mod)	CY	190	199
402	Reinforcing Steel	LB	36,866	36,555
403	Spiral Reinforcement (2950LB)	LB	—	—
401A	Structural Steel	LB	16,431	16,820
361B	Bit Concrete Pavement	T	64	74
596L	Granite Bridge curb	LF	347	—
512	Bridge Railing	LB	330	—

IM 089-2(26)  
This sheet for information only  
**BR 43 N & S**

STATE OF VERMONT  
DEPARTMENT OF HIGHWAYS

INTERSTATE PROJECT in the Towns of  
BERLIN - MONTPELIER - MIDDLESEX

**OVERPASS - STA 314+00 - STRUCT. #4**  
**WESTBOUND FRAMING & REINFORCING PLAN**

DESIGNED BY: RAE  
CHECKED BY: A.J.I.  
DATE: AUG. 1957

PROJECT NO. : 89-2-131 SHEET 217 OF 307