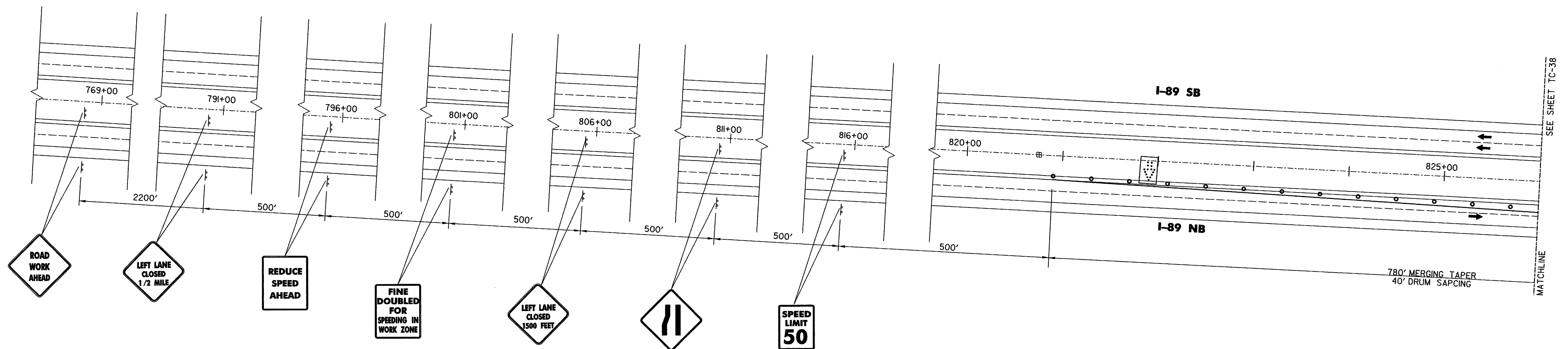


LEGEND

- CONCRETE BARRIER
- DIRECTION OF TRAFFIC FLOW WITH DETOUR IN PLACE
- CROSSOVER ALIGNMENT
- BRIDGE WORK AREA
- LEDGE OUTCROPPING
- GUARDRAIL
- EXISTING DROP INLET
- PORTABLE ARROW BOARD
- TYPE I DELINEATOR (YELLOW)
- TYPE I DELINEATOR (WHITE)
- REFLECTORIZED PLASTIC DRUM
- 4" TEMPORARY PAVEMENT MARKINGS
- TYPE III BARRICADE
- TYPE III (MOD) BARRICADE
- APPROXIMATE CULVERT LOCATION



**STATE OF VERMONT
AGENCY OF TRANSPORTATION**

Town Of MIDDLESEX-BOLTON		Bridge No. 48, 49, 50
Highway No. I-89	Log Sta.	Surv. Sta.
PHASE II CONSTRUCTION I-89 NORTHBOUND CROSSOVER		
BRIDGES 48, 49, 50		
Designed By J.M.SMYRSKI/K.S.MARSHA	Drawn By S.E.SCHMITT	
Checked By J.W.TUCKER	Date 10/99	Bridge Design Supervisor J.P.HALSTEAD Date 10/99
PROJECT MIDDLESEX-BOLTON		PROJECT NO. IM-089-2(26)
Drawing No. ...148-49-50-nb.dgn		Date OCT 1999
Bridge Sheet No. TC-37		Sheet 197 of 307

