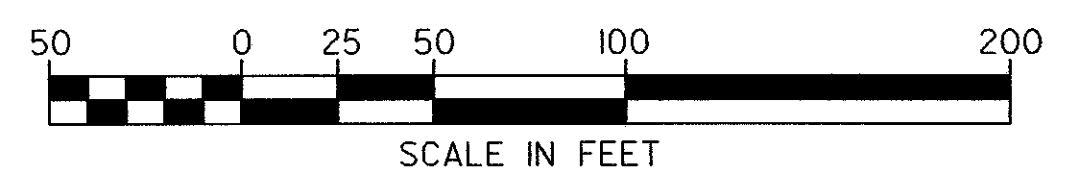
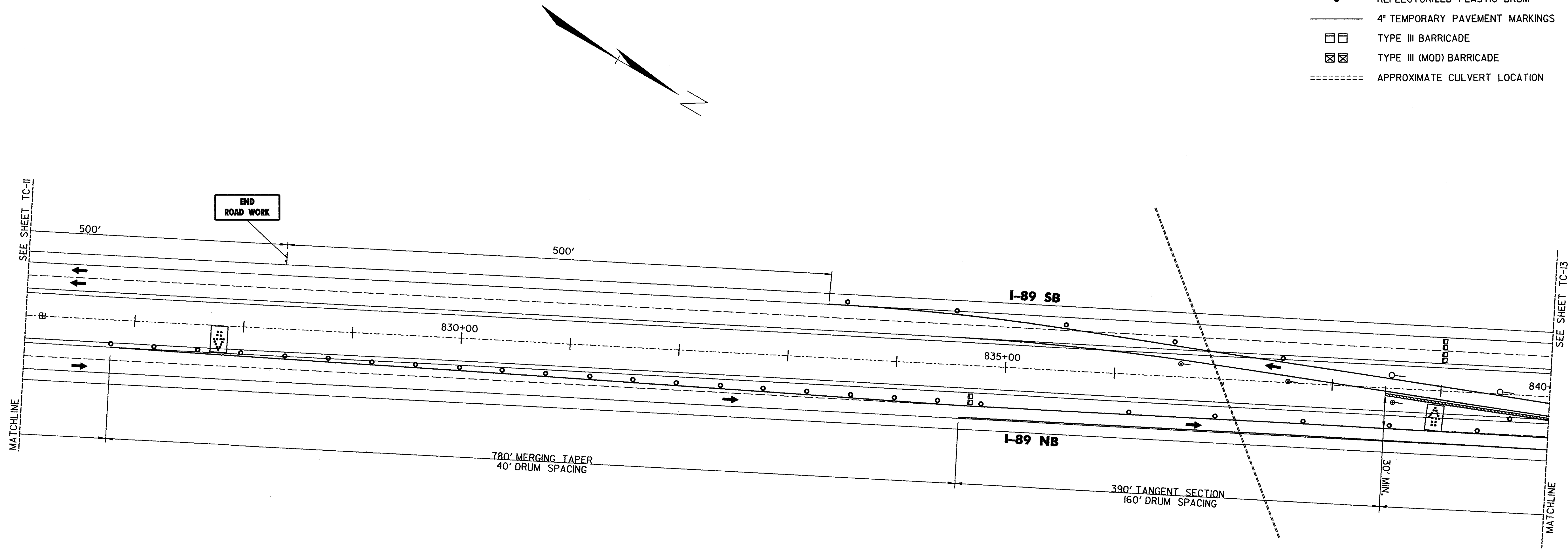


**LEGEND**

- CONCRETE BARRIER
- DIRECTION OF TRAFFIC FLOW WITH DETOUR IN PLACE
- ==== CROSSOVER ALIGNMENT
- ▨ BRIDGE WORK AREA
- ▨ LEDGE OUTCROPPING
- GUARDRAIL
- ⊞ EXISTING DROP INLET
- ⊞ PORTABLE ARROW BOARD
- TYPE I DELINEATOR (YELLOW)
- TYPE I DELINEATOR (WHITE)
- REFLECTORIZED PLASTIC DRUM
- 4" TEMPORARY PAVEMENT MARKINGS
- TYPE III BARRICADE
- ▣ TYPE III (MOD) BARRICADE
- ===== APPROXIMATE CULVERT LOCATION



**STATE OF VERMONT  
AGENCY OF TRANSPORTATION**

Town Of MIDDLESEX-BOLTON		Bridge No. <b>48, 49, 50</b>
Highway No. I-89	Log Sta.	Surv. Sta.
<b>PHASE I CONSTRUCTION I-89 SOUTHBOUND CROSSOVER</b>		
<b>BRIDGES 48, 49, 50</b>		
Designed By J.M.SMYRSKI/K.S.MARSHA	Drawn By S.E.SCHMITT	
Checked By J.W.TUCKER	Date 10/99	Bridge Design Supervisor J.P.HALSTEAD Date 10/99
PROJECT MIDDLESEX-BOLTON	PROJECT NO. IM-089-2(26)	
Drawing No. ...148-49-50-sb.dgn	Date OCT 1999	
Bridge Sheet No. TC-12	Sheet 172 of 307	

