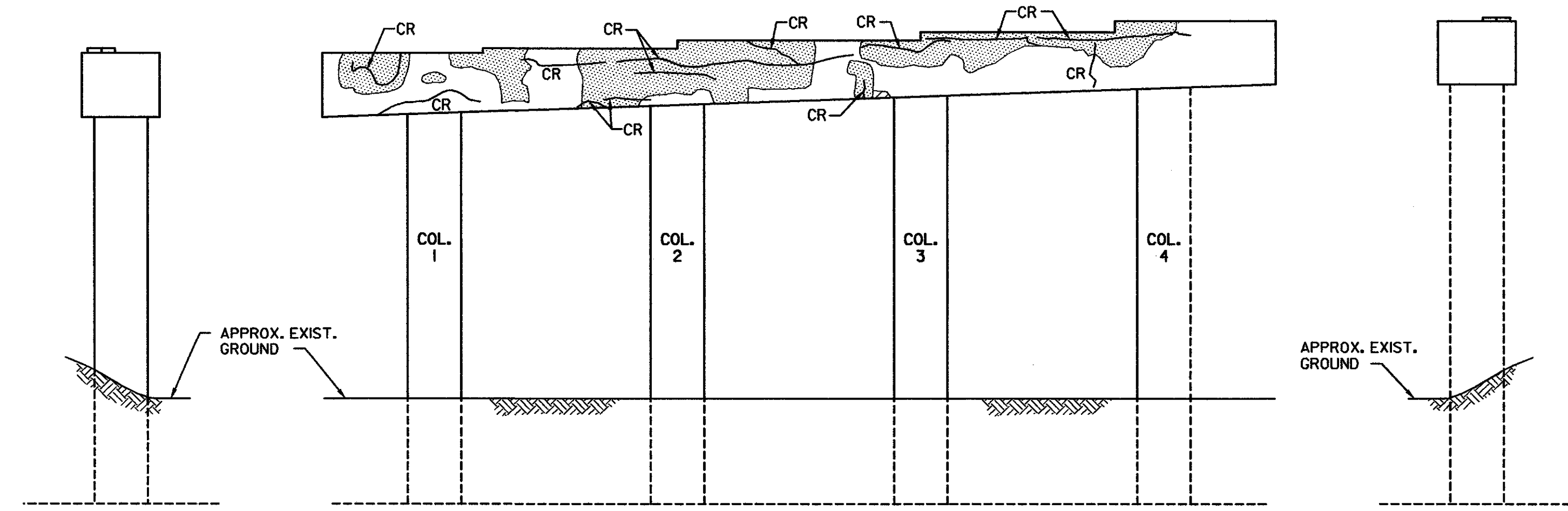
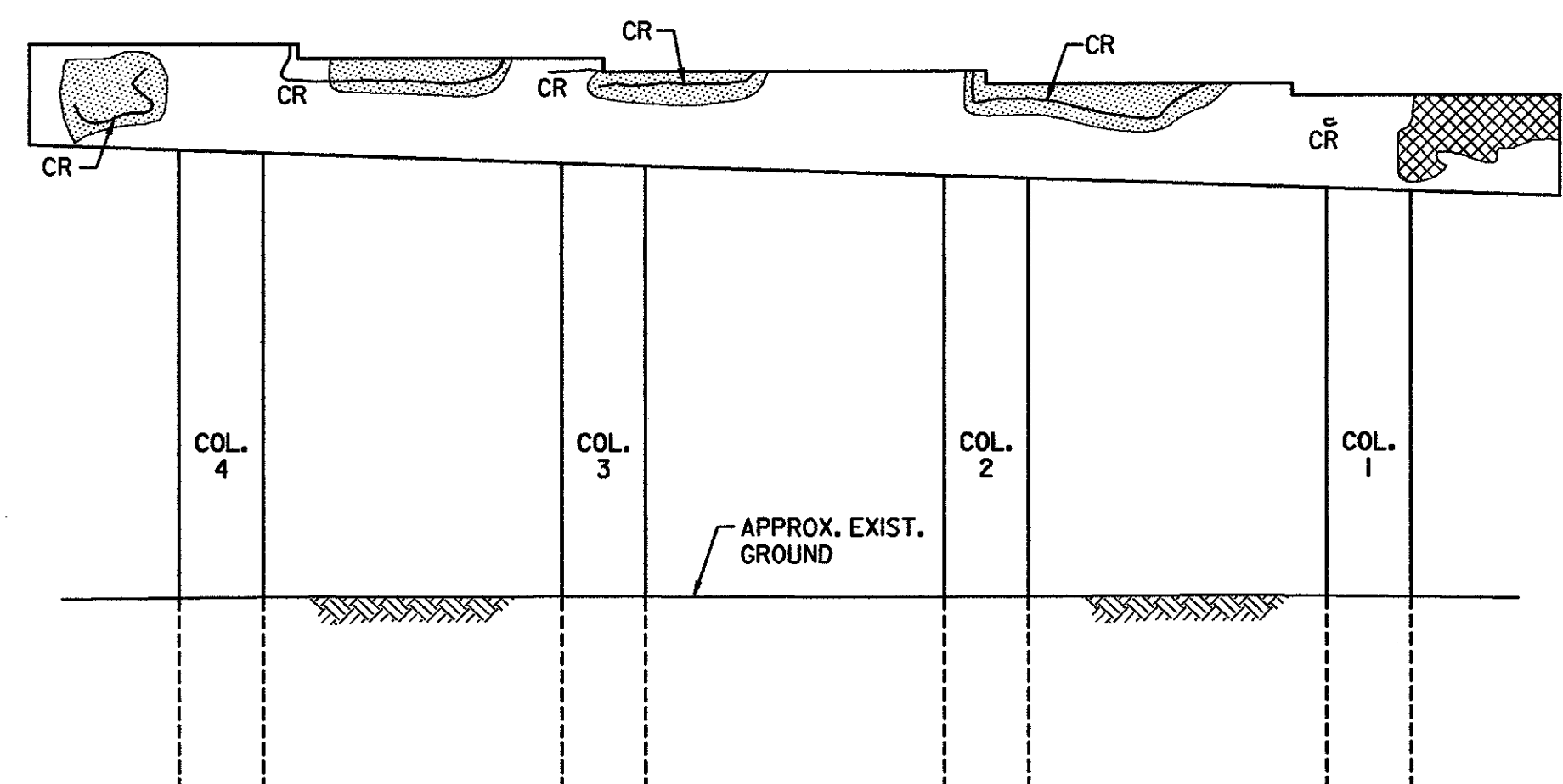


(ABUT. 1 SIDE)



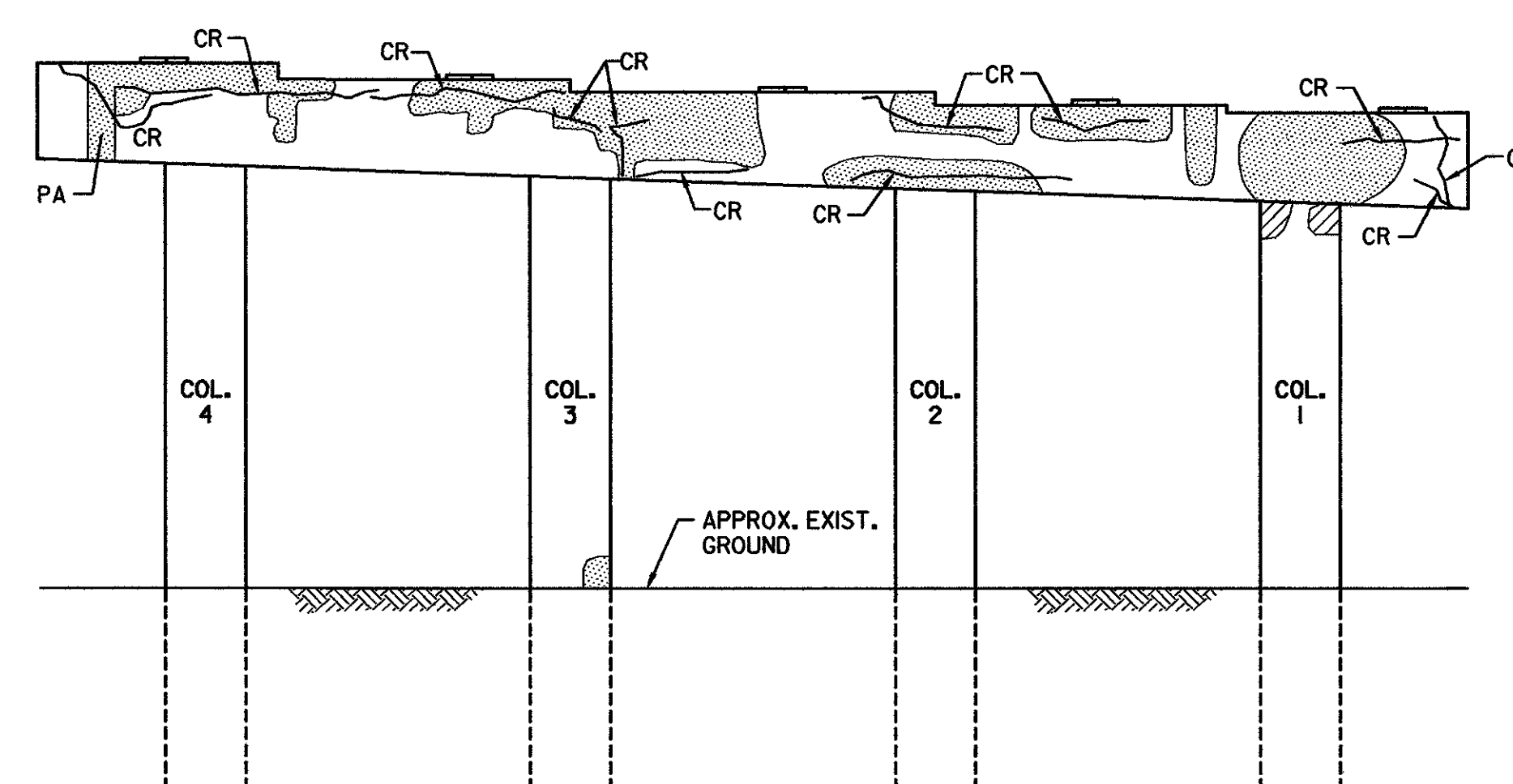
(PIER 1 SIDE)



(PIER 2 SIDE)

**PIER 1 ELEVATIONS**

SCALE: 3/16"=1'-0"



(ABUT. 2 SIDE)

**PIER 2 ELEVATIONS**

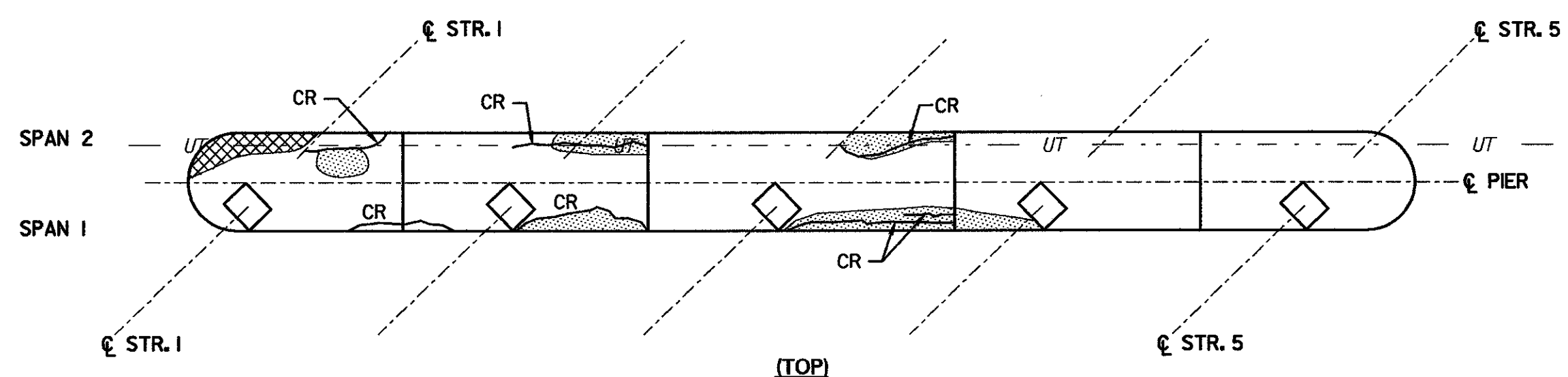
SCALE: 3/16"=1'-0"

**ABBREVIATIONS**

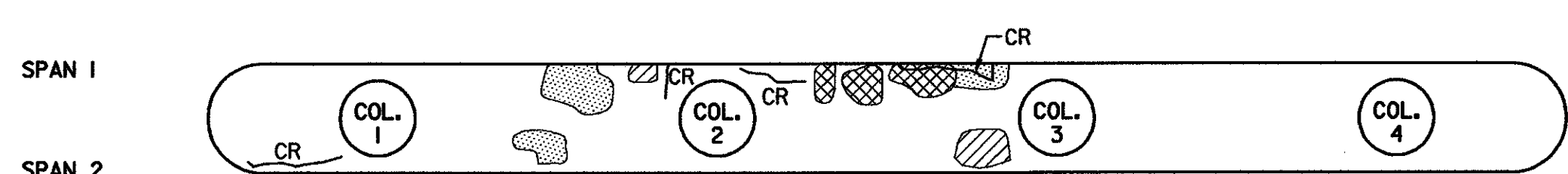
CR CRACK  
PA CRACK PREVIOUSLY PATCHED AREA

**LEGEND**

CRACK  
DELAMINATED AREA  
SPALLED AREA  
DEEPLY SPALLED WITH EXPOSED REBAR  
UNDERGROUND TELEPHONE — UT —  
UNDERGROUND ELECTRIC — UE —  
EXISTING GROUND



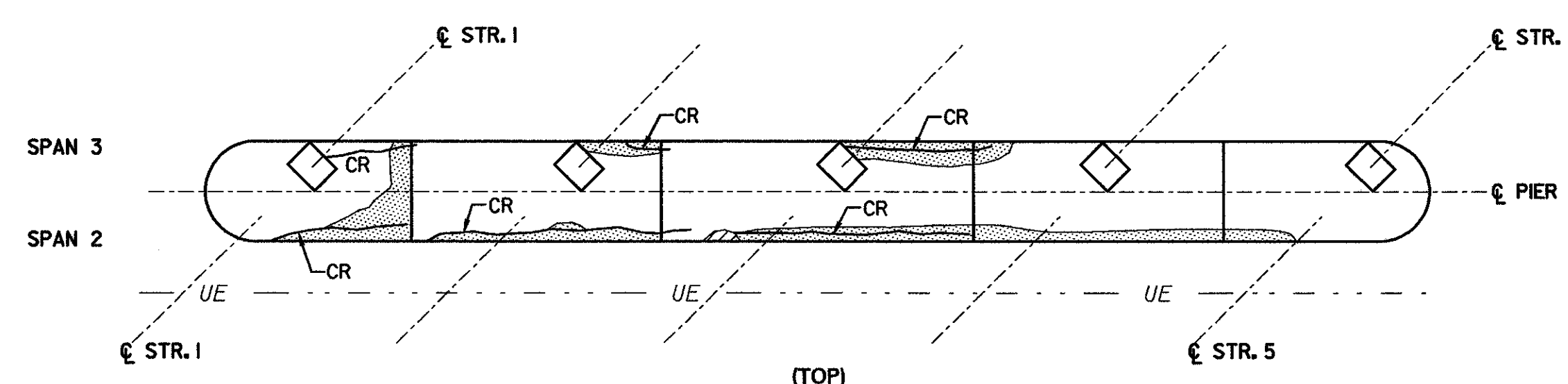
(TOP)



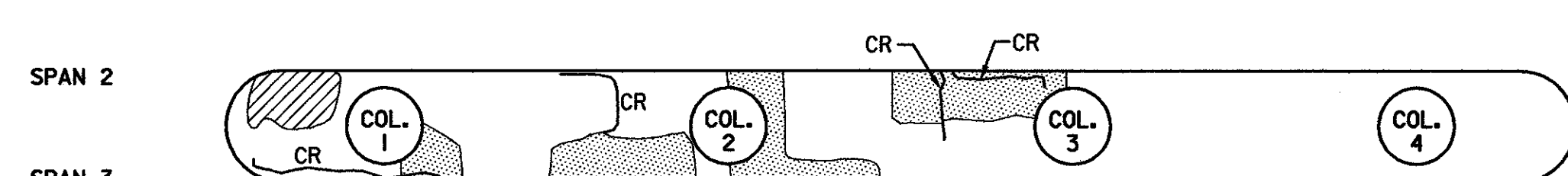
(BOTTOM)

**PIER 1 CAP**

SCALE: 3/16"=1'-0"



(TOP)



(BOTTOM)

**PIER 2 CAP**

SCALE: 3/16"=1'-0"

**STATE OF VERMONT  
AGENCY OF TRANSPORTATION**

Town Of	MIDDLESEX-BOLTON	Bridge No.	50S
Highway No.	I-89	Log Sta.	
		Surv. Sta.	
I-89 SB OVER U.S. ROUTE 2			
<b>EXIST. SUBSTR. CONDITION (50S) (1 OF 2)</b>			
Designed By	P.W. SZUSTAK	Drawn By	R.A. BOTZENHART
Checked By	J.P. HALSTEAD	Date	10/99
		Bridge Design Supervisor	J.P. HALSTEAD Date 10/99
PROJECT	MIDDLESEX-BOLTON	PROJECT NO.	IM-089-2(26)
TVGA CAD Drawing No.	50plers	Date	10/99
Bridge Sheet No.	SC-15	Sheet	149 of 307