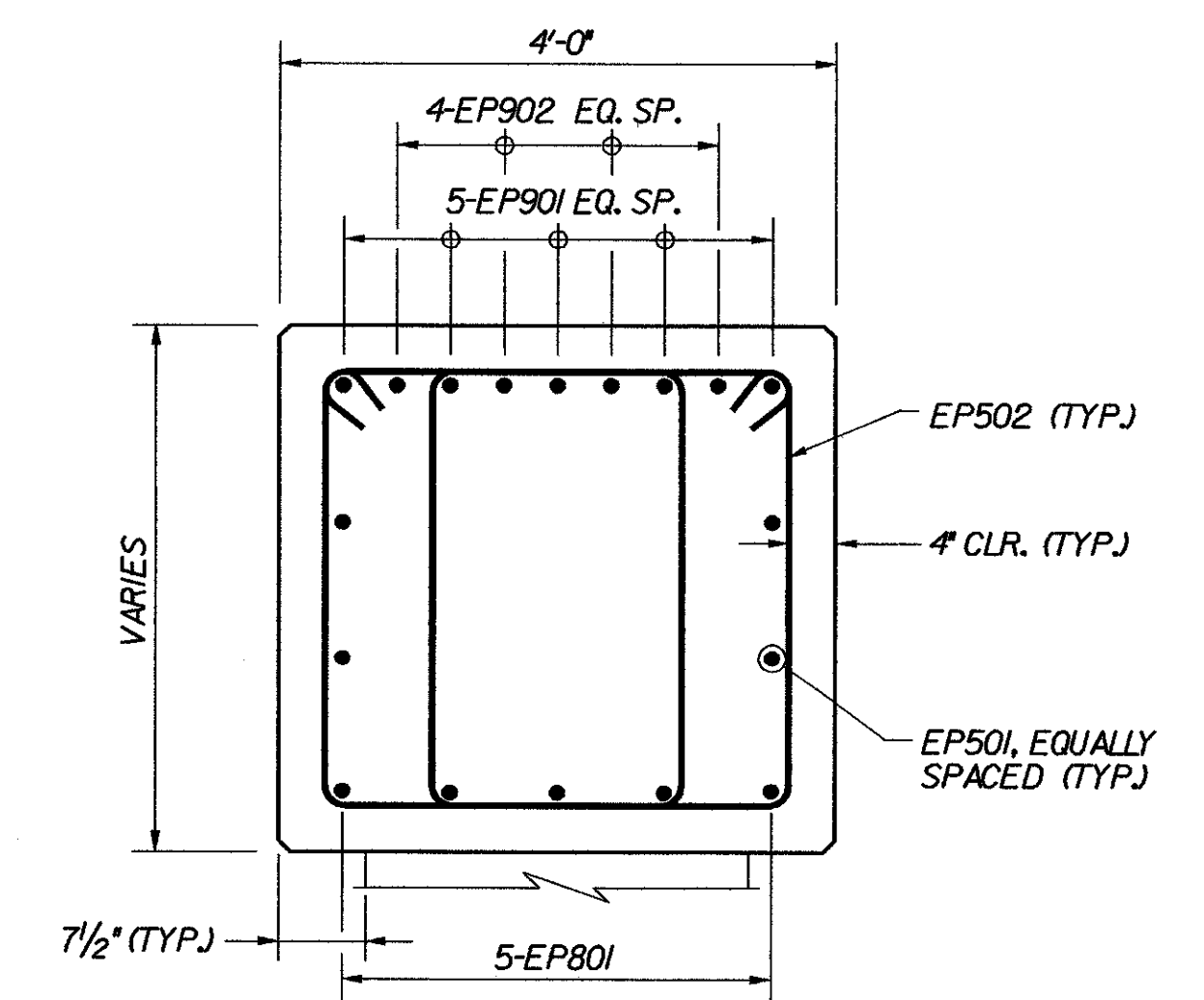
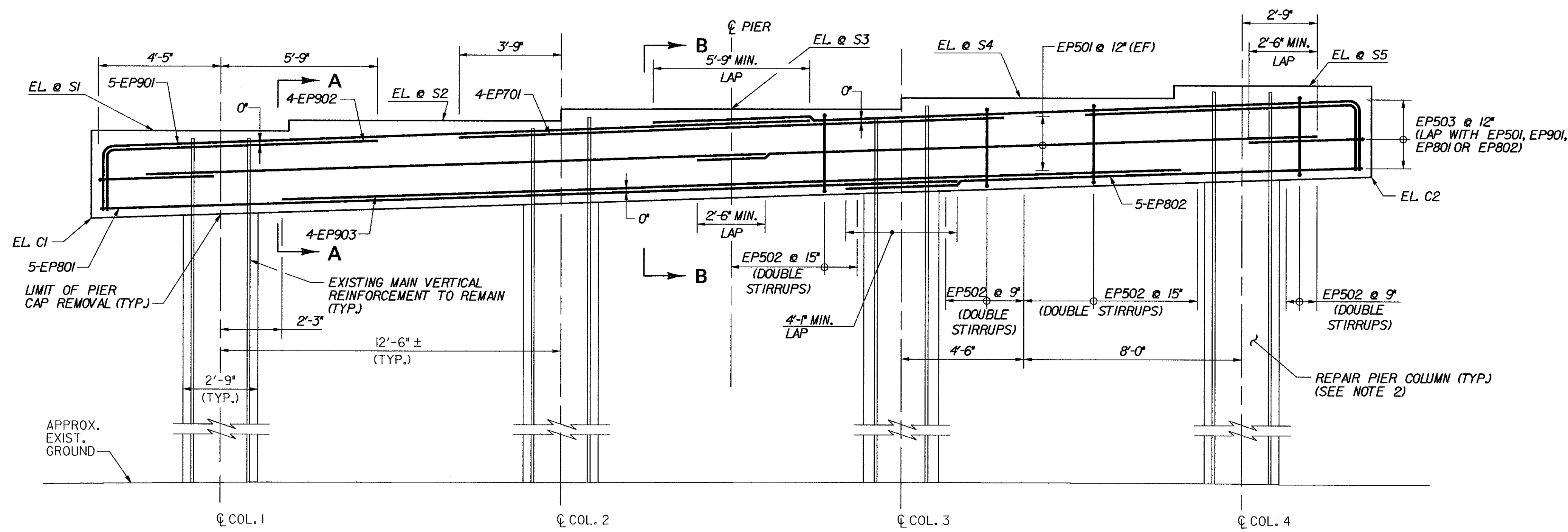


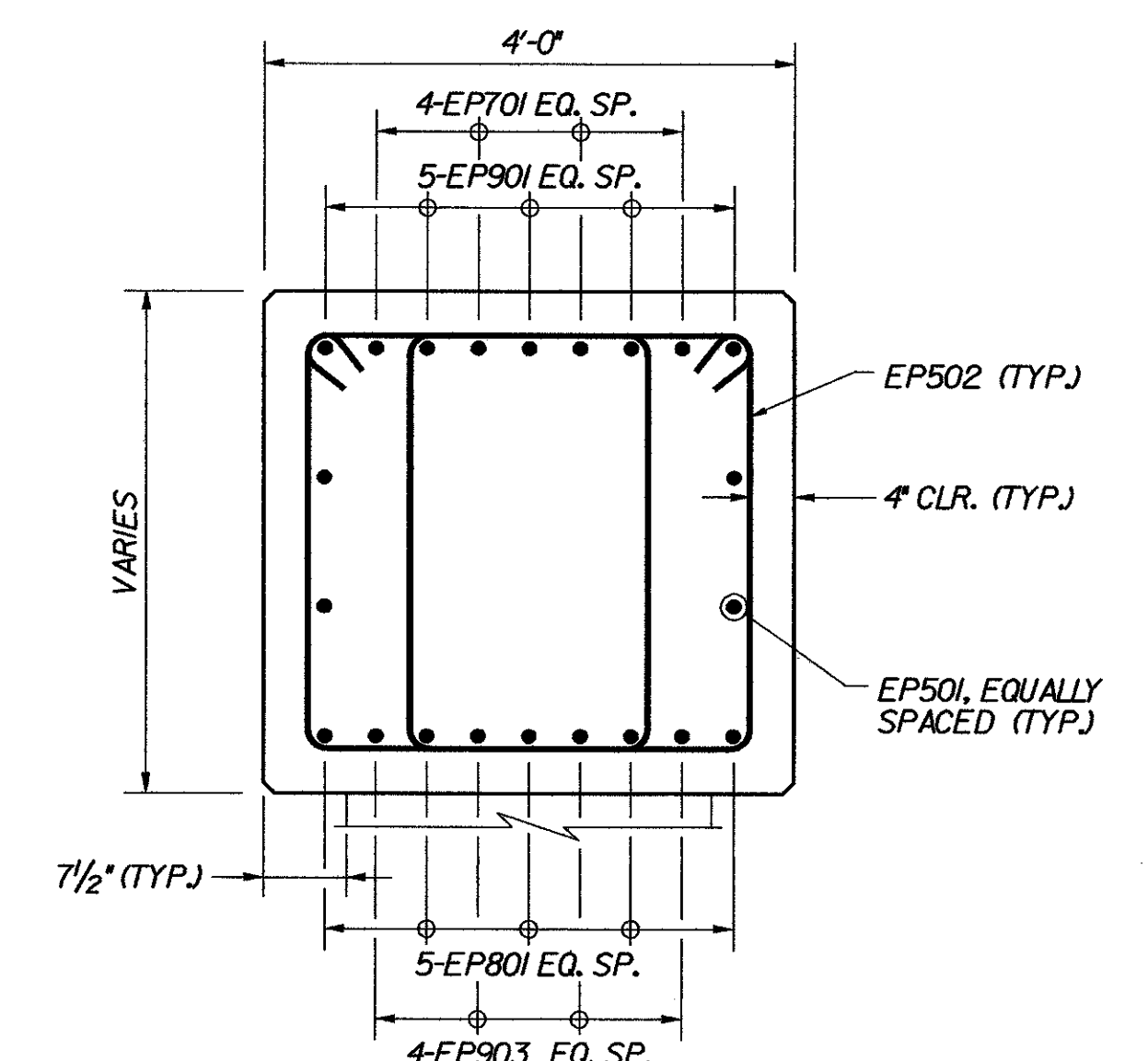
TYPICAL PIER CAP PLAN
SCALE: 3/8"=1'-0"



SECTION A-A
SCALE: 3/4"=1'-0"



TYPICAL PIER ELEVATION
SCALE: 3/8"=1'-0"



SECTION B-B
SCALE: 3/4"=1'-0"

- NOTES:**
- STEPS ON PIER CAP SEAT SHALL BE EQUIDISTANT BETWEEN STRINGERS.
 - REPAIR ALL EXISTING SPALLED AND DELAMINATED AREAS ON PIER. SEE EXISTING SUBSTRUCTURE CONDITION, BRIDGE SHEETS SC-13 THROUGH SC-16 FOR APPROXIMATE CONDITION OF EXISTING SUBSTRUCTURES. FOR CONCRETE REPAIR DETAILS, SEE SUBSTRUCTURE REPAIR DETAILS AND NOTES, BRIDGE SHEET C-45.

BRIDGE	PIER	STA.	ASKEW ANGLE	CL BRG. DIRECTION	DIM. "A"	DIM. "B"	DIM. "C"	DIM. "D"	PIER SEAT ELEVATIONS					BOTTOM OF PIER CAP ELEVATIONS	
									S1	S2	S3	S4	S5	C1	C2
50N	1	6+32.21	44°50'40.0"	N 35°43'28.2" W	10'-7 7/8"	10'-7 11/16"	10'-7 9/16"	10'-7 3/8"	472.16	472.54	472.91	473.29	473.66	468.65	470.01
	2	7+28.71	45°48'11.7"	N 35°43'28.2" W	10'-5 3/4"	10'-5 5/8"	10'-5 7/16"	10'-5 5/16"	474.46	474.83	475.20	475.57	475.93	470.70	472.14
50S	1	5+48.86	44°11'11.3"	N 35°36'33.8" W	10'-9 3/8"	10'-9 3/16"	10'-9 1/16"	10'-8 7/8"	463.80	464.23	464.66	465.09	465.52	460.37	461.90
	2	6+39.36	45°05'50.5"	N 35°36'33.8" W	10'-7 5/16"	10'-7 1/8"	10'-7"	10'-6 13/16"	466.55	466.97	467.39	467.81	468.23	462.84	464.52

- KEY**
- NF NEAR FACE
 - FF FAR FACE
 - EF EACH FACE
 - ▲ REINFORCEMENT TO BE CUT TO FIT IN THE FIELD

**STATE OF VERMONT
AGENCY OF TRANSPORTATION**

Town Of	MIDDLESEX-BOLTON	Bridge No.	50N&S
Highway No.	I-89	Log Sta.	
		Surv. Sta.	
I-89 OVER U.S. ROUTE 2			
PIER CAP MASONRY & REINF. (50N&S)			
Designed By	P.W. SZUSTAK	Drawn By	R.A. BOTZENHART
Checked By	J.P. HALSTEAD	Date	10/99
		Bridge Design Supervisor	J.P. HALSTEAD Date 10/99
PROJECT	MIDDLESEX-BOLTON	PROJECT NO.	IM-089-2(26)
TVGA CAD Drawing No.	50pmas	Date	10/99
Bridge Sheet No.	BR50-13	Sheet	97 of 307