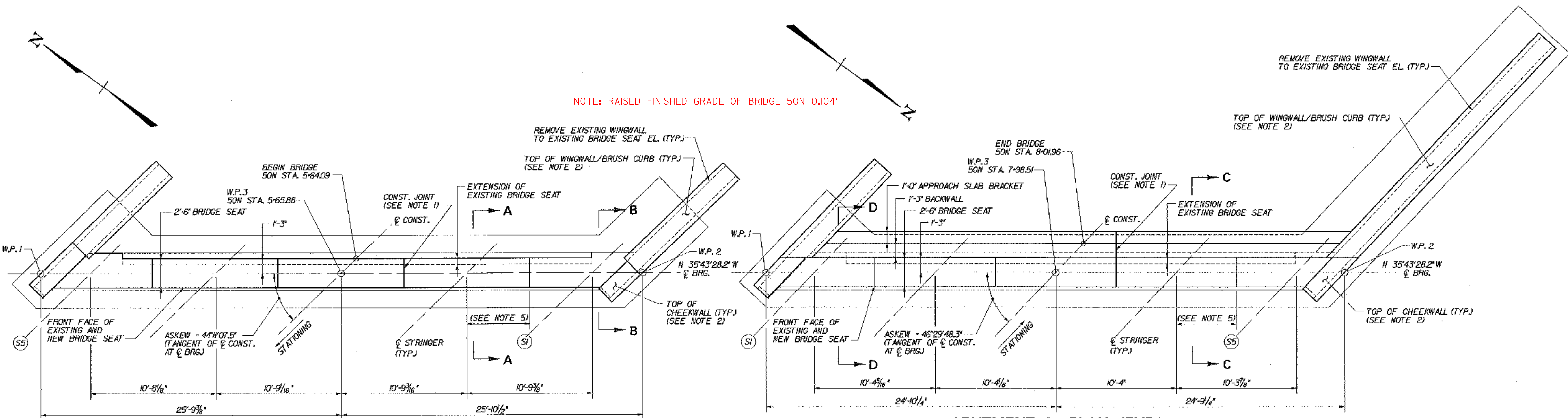
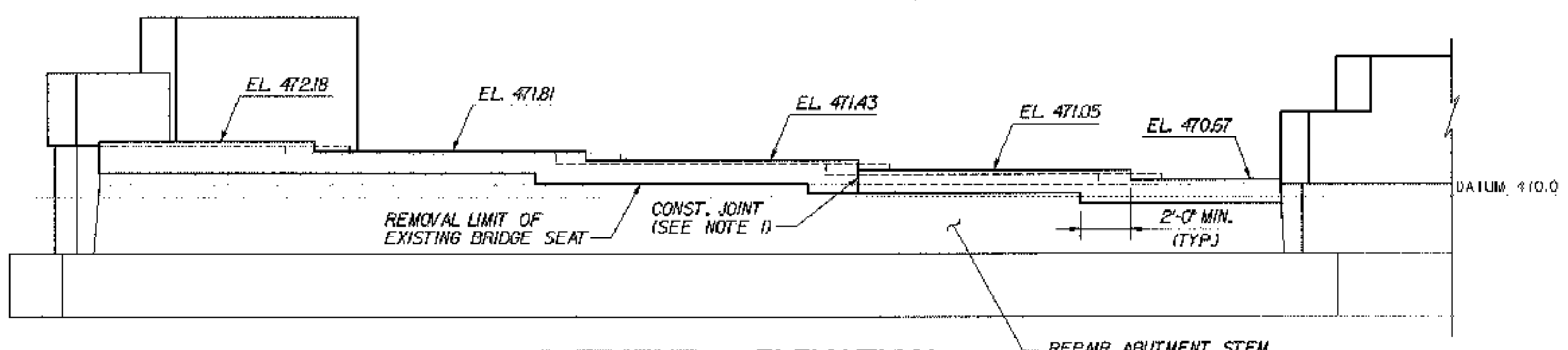


NOTE: RAISED FINISHED GRADE OF BRIDGE 50N 0.104'

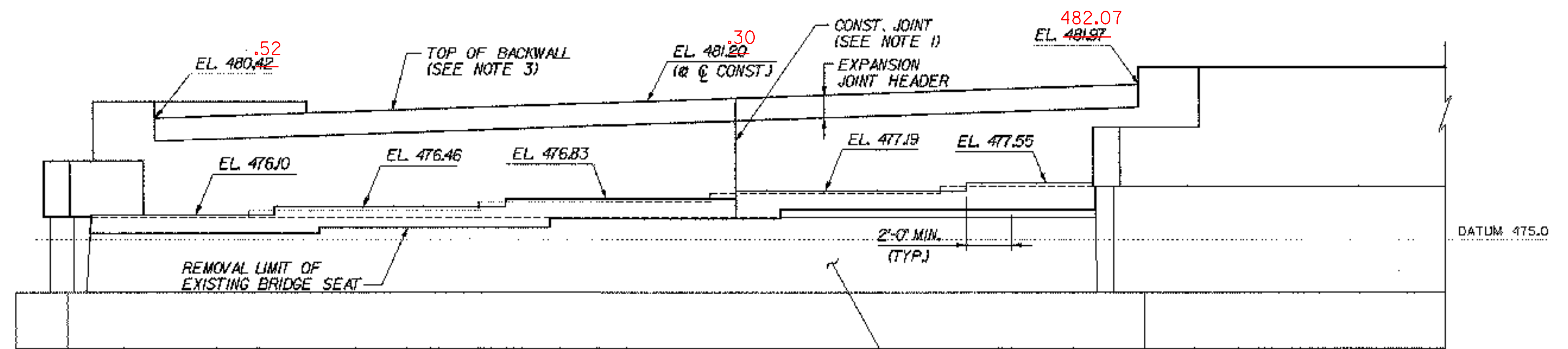


ABUTMENT 1 PLAN (FIXED)
SCALE: 1/4"=1'-0"

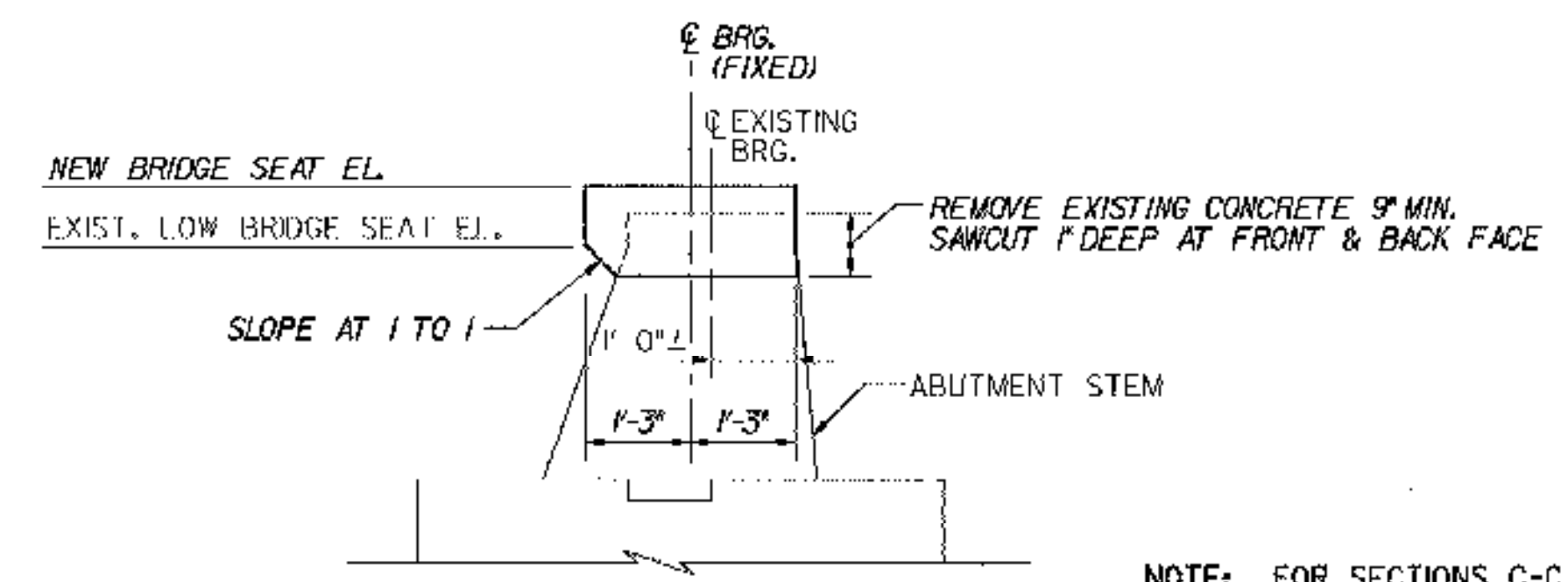
ABUTMENT 2 PLAN (EXP.)
SCALE: 1/4"=1'-0"



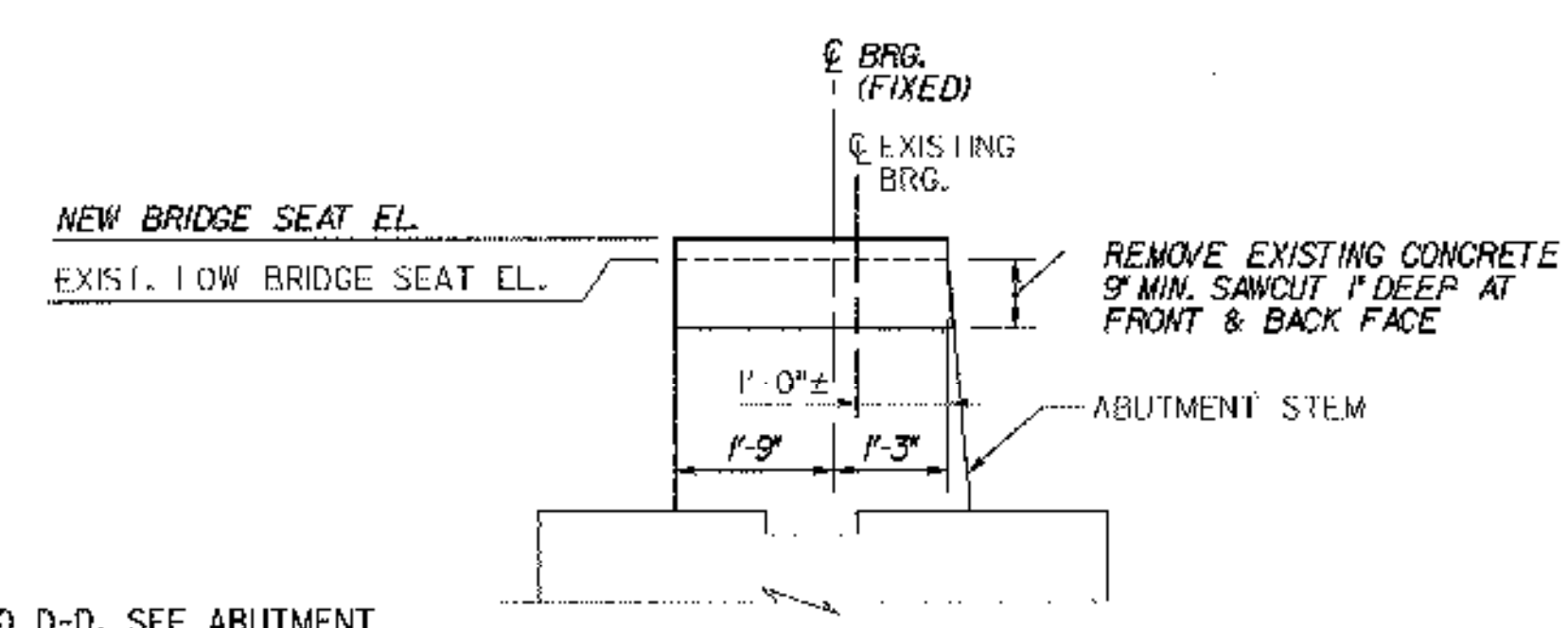
ABUTMENT 1 ELEVATION
SCALE: 1/4"=1'-0"



ABUTMENT 2 ELEVATION
SCALE: 1/4"=1'-0"



SECTION A-A
SCALE: 1/2"=1'-0"



SECTION B-B
SCALE: 1/2"=1'-0"

NOTE: FOR SECTIONS C-C AND D-D, SEE ABUTMENT MASONRY (50S), BRIDGE SHEET BR50-12.

NOTES:

- CONSTRUCTION JOINT LOCATED AT STEP IN BRIDGE SEAT. LOCATION SHALL BE REVISED AS DIRECTED BY THE RESIDENT ENGINEER AS REQUIRED TO MATCH ANY CONSTRUCTION JOINT IN THE EXISTING ABUTMENT STEM.
- FOR WINGWALL AND CHEEKWALL DIMENSIONS, DETAILS AND ELEVATIONS, SEE TYPICAL WINGWALL DETAILS, BRIDGE SHEETS C-43 AND C-44.
- BACKWALL ELEVATIONS SHOWN AT FRONT FACE OF BACKWALL.
- FOR ABUTMENT REINFORCEMENT DETAILS, SEE TYPICAL EXPANSION ABUTMENT REINFORCEMENT, BRIDGE SHEET C-40, AND TYPICAL FIXED ABUTMENT REINFORCEMENT, BRIDGE SHEET C-41.
- STEPS IN BRIDGE SEATS SHALL BE EQUIDISTANT BETWEEN STRINGERS.
- REPAIR ALL EXISTING SPALLED AND DELAMINATED AREAS ON ABUTMENT. SEE EXISTING SUBSTRUCTURE CONDITION, BRIDGE SHEETS SC-13 THROUGH SC-16 FOR APPROXIMATE CONDITION OF EXISTING SUBSTRUCTURES. FOR CONCRETE REPAIR DETAILS, SEE SUBSTRUCTURE REPAIR DETAILS AND NOTES, BRIDGE SHEET C-45.

STATE OF VERMONT AGENCY OF TRANSPORTATION	
Town Of MIDDLESEX-BOLTON	Bridge No. 50N
Highway No. I-89	Log Sta.
1-89 NB OVER U.S. ROUTE 2	
ABUTMENT MASONRY (50N)	
Designed By P.W. SZUSTAK	Drawn By R.A. BOTZENHART
Checked By J.P. HALSTEAD	Bridge Design Supervisor J.P. HALSTEAD
Date 10/99	Date 10/99
PROJECT MIDDLESEX-BOLTON	PROJECT NO. 1M-089-2(26)
TVGA CAD Drawing No. 50obmas	Date 10/99
Bridge Sheet No. BR50-11	Sheet 95 of 307