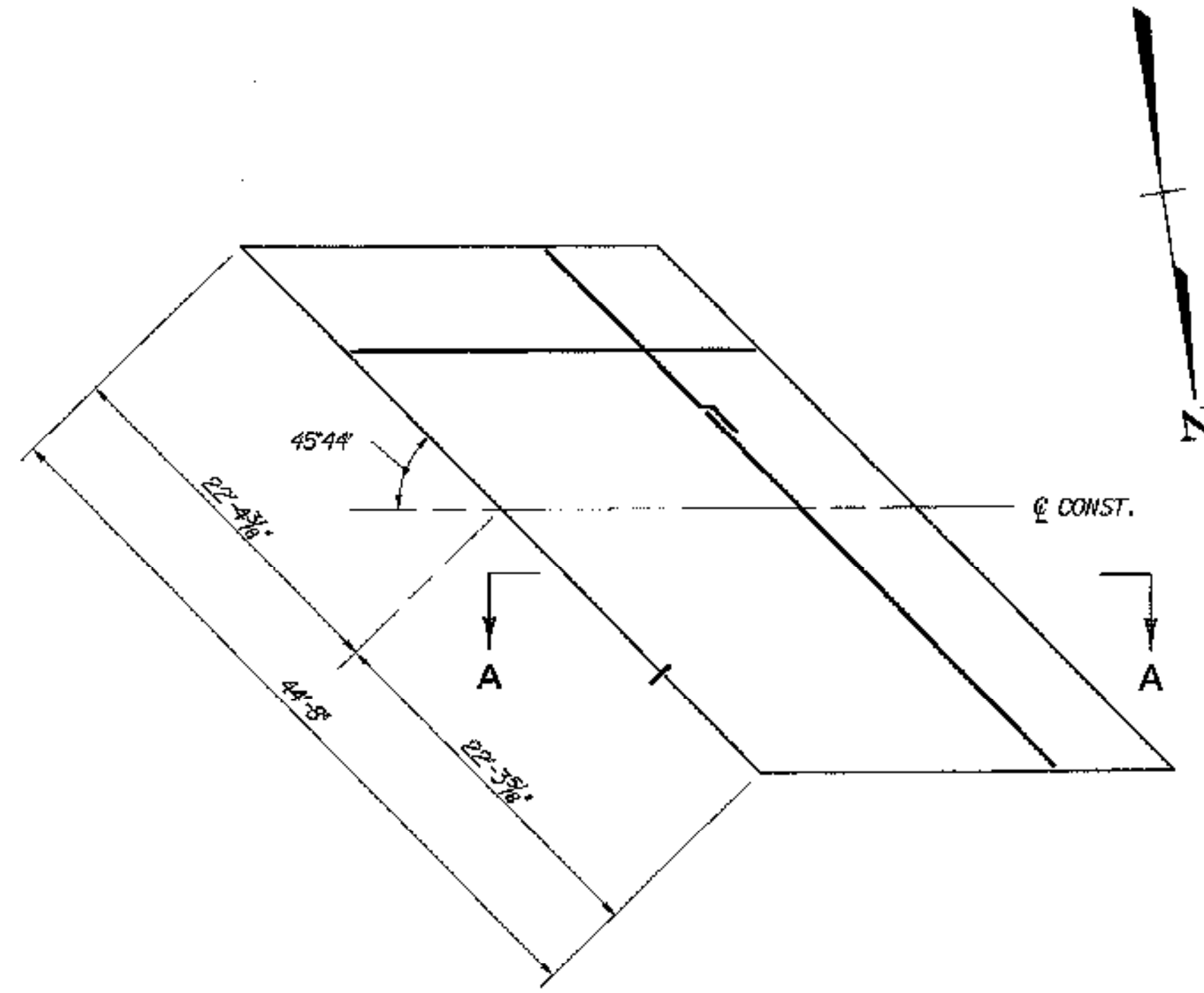
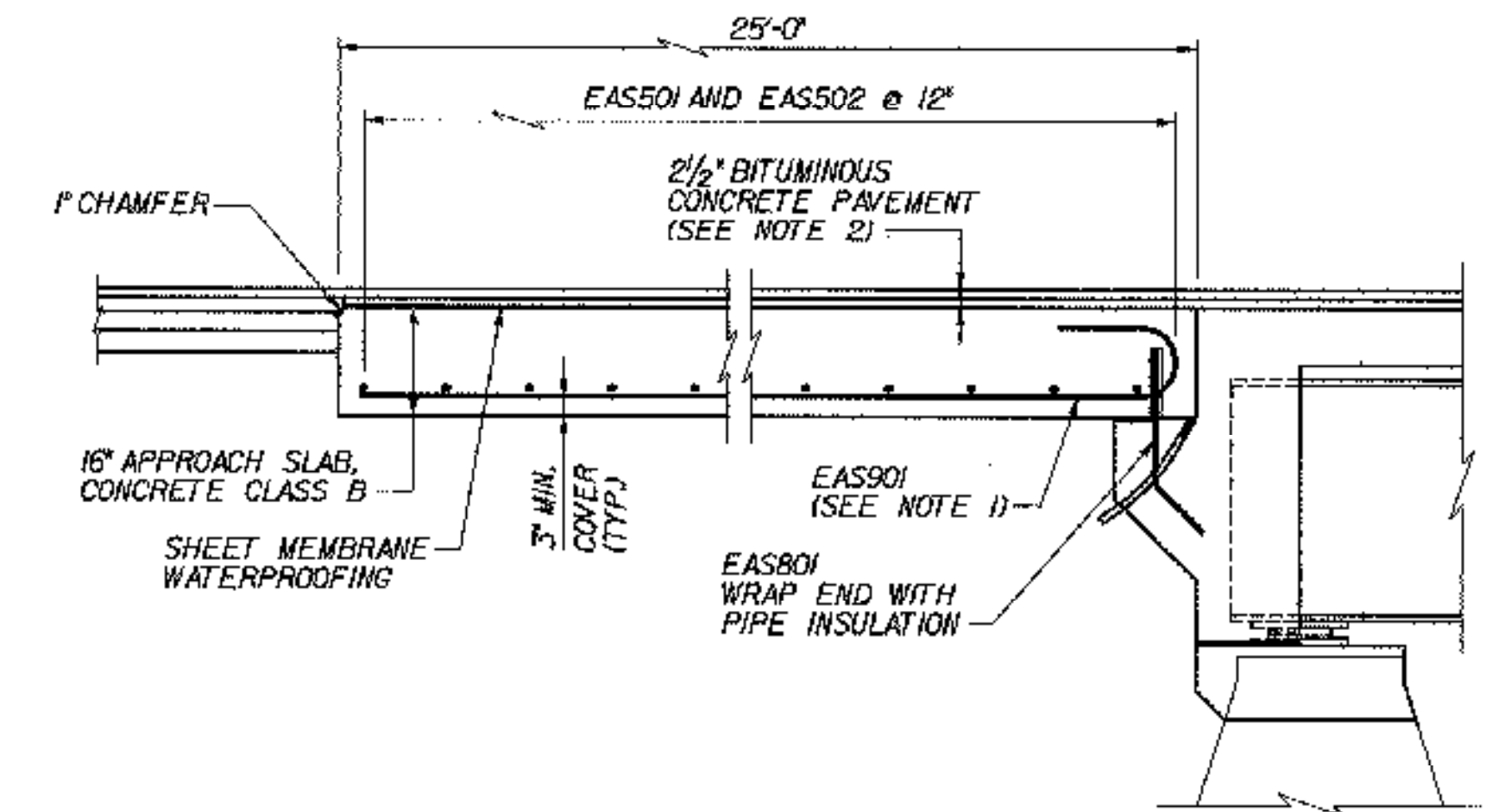


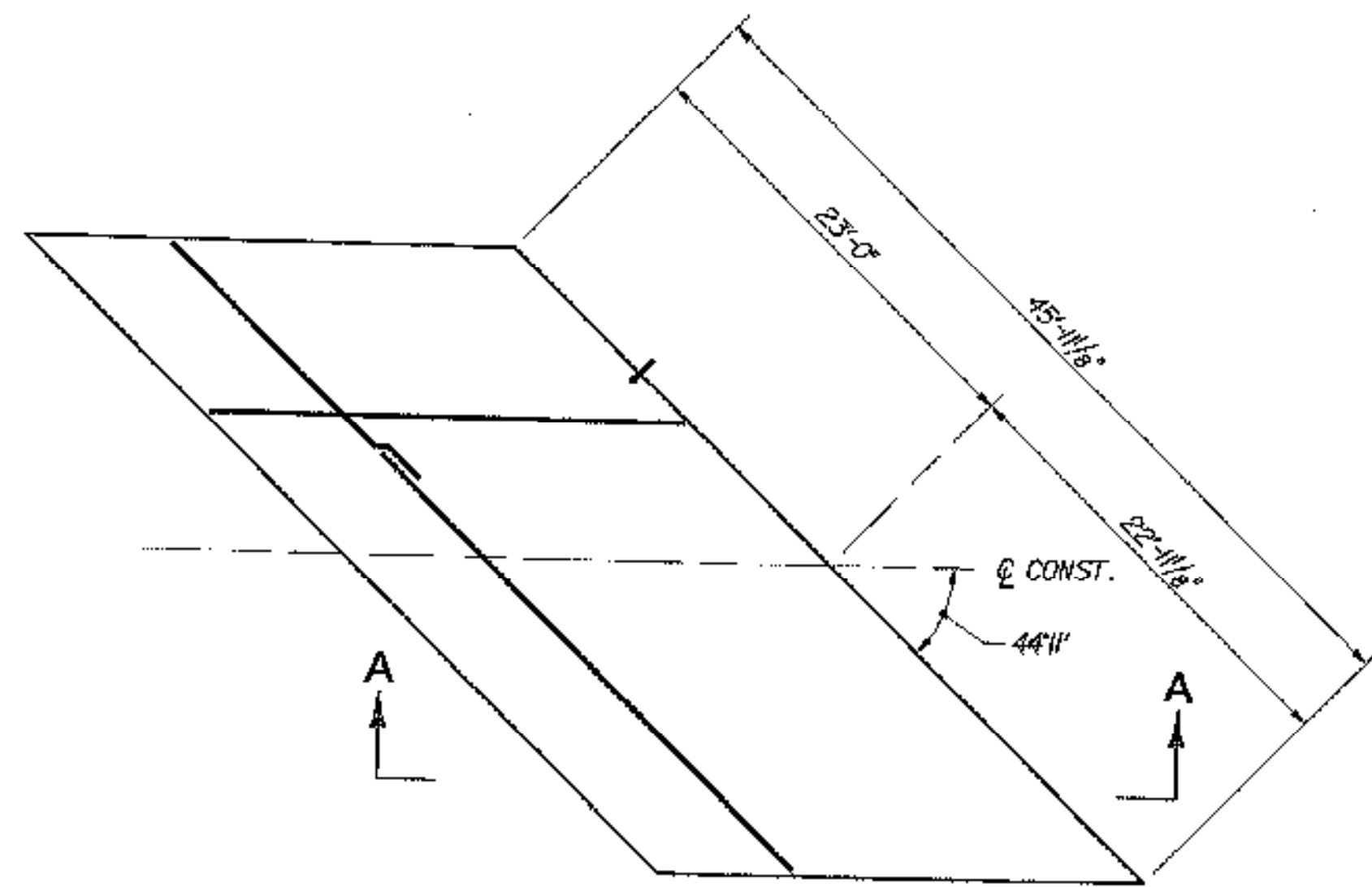
50S ABUTMENT 1



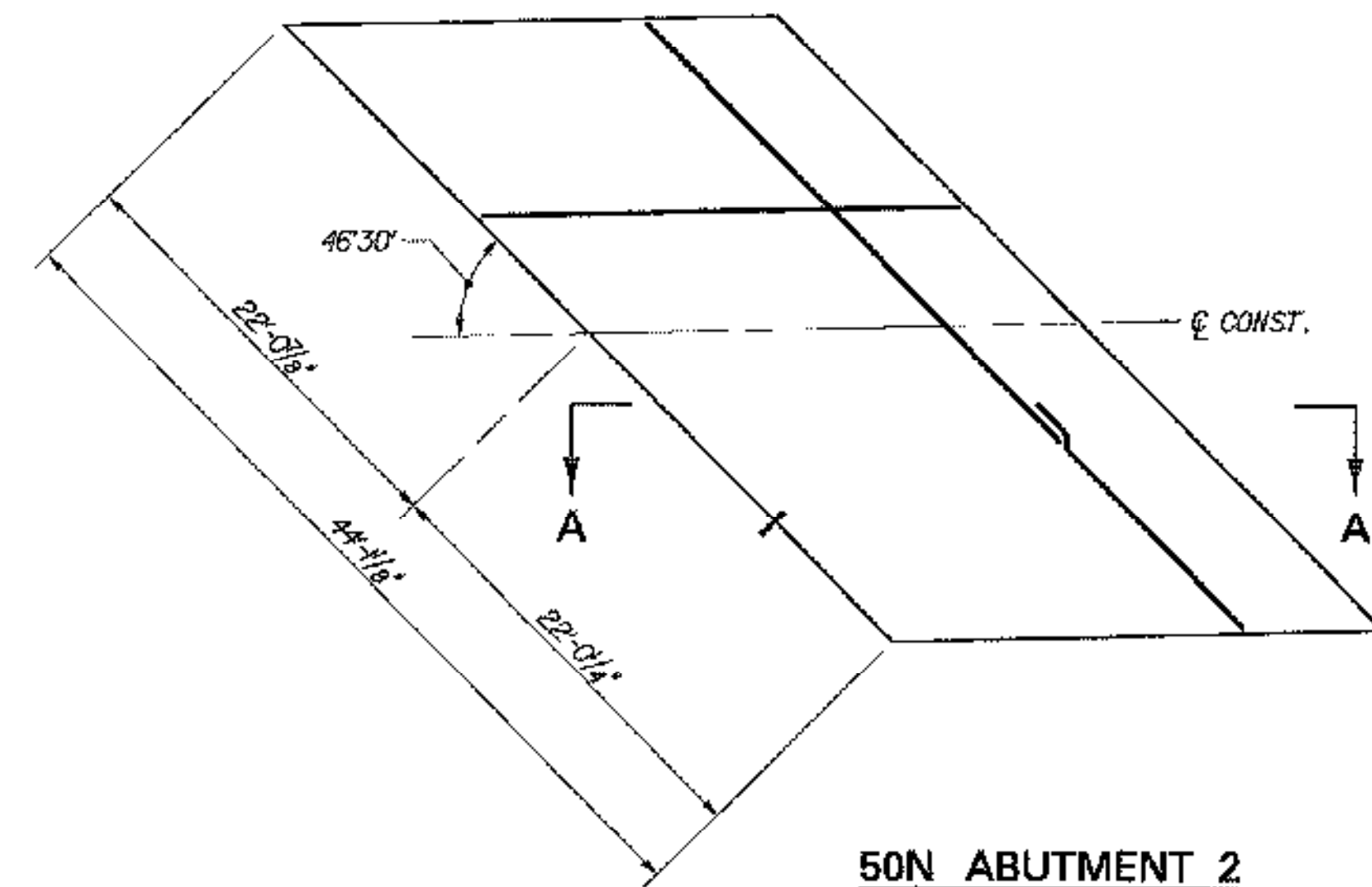
50S ABUTMENT 2



SECTION A-A
(APPROACH SLAB AT FIXED ABUT. SHOWN;
SLAB AT EXPANSION ABUT. SIMILAR)
N.T.S.

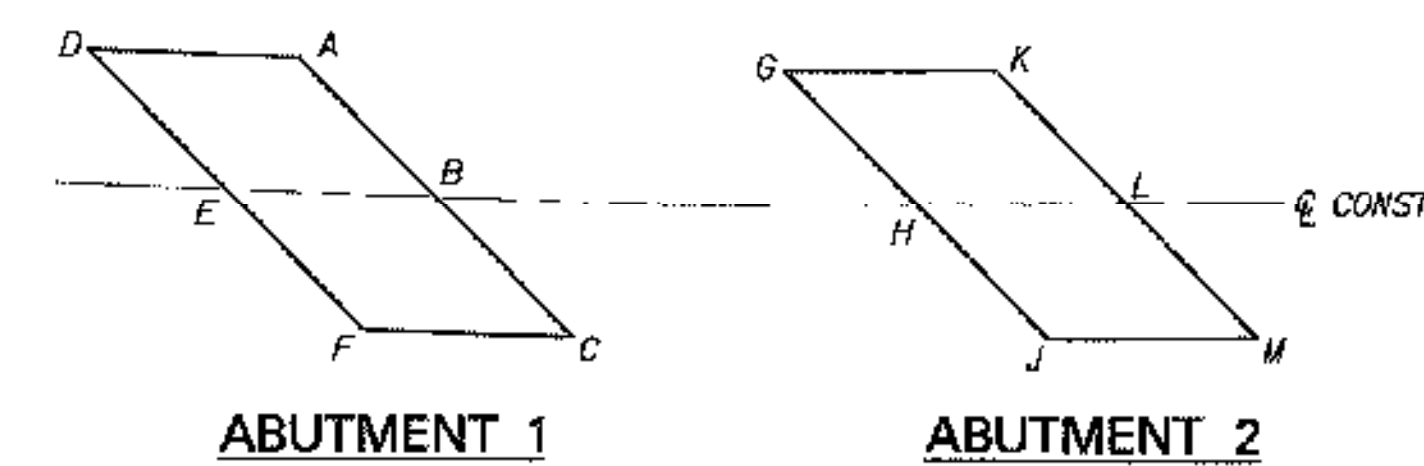


50N ABUTMENT 1



50N ABUTMENT 2

APPROACH SLAB PLANS
SCALE: 1/8" = 1'-0"



APPROACH SLAB ELEVATION KEY
N.T.S.

RAISED FINISHED GRADE 1/4"
RAISED FINISHED GRADE 1/2"

TOP OF APPROACH SLAB ELEVATIONS					
BR 50N			BR 50S		
LOCATION	STATION	ELEVATION	LOCATION	STATION	ELEVATION
A	5+47.54	474.57-.67	A	4+62.93	465.73
B	5+84.08	475.38-.48	B	4+79.87	466.86
C	5+80.49	476.18-.28	C	4+96.66	467.56
D	5+22.40	473.97-.07	D	4+37.78	465.00
E	5+39.09	474.78-.88	E	4+54.87	465.91
F	5+55.63	475.58-.69	F	4+71.81	466.83
G	7+86.73	480.25-.35	G	6+88.96	472.55
H	8+01.06	481.03-.13	H	7+04.60	473.44
J	8+17.06	481.80-.90	J	7+20.13	474.33
K	8+11.86	480.85-.95	K	7+14.09	473.31
L	8+26.98	481.62-.72	L	7+29.60	474.20
M	8+41.94	482.39-.49	M	7+44.98	475.09

NOTES:

- TIP HOOK END OF BAR AS REQUIRED TO ACHIEVE MINIMUM COVER.
- FOR DETAILS OF APPROACH SLAB PAVEMENT AND TRANSITION TO EXISTING PAVEMENT, SEE DETAIL ON TYPICAL END OF DECK SLAB DETAILS, BRIDGE SHEET C-15.

STATE OF VERMONT
AGENCY OF TRANSPORTATION

Town Of MIDDLESEX-BOLTON Bridge No. 50N&S
Highway No. I-89 Log Sta. Surv. Sta.

I-89 OVER U.S. ROUTE 2
APPROACH SLAB DETAILS (50N&S)

Designed By P.W. SZUSTAK Drawn By R.A. BOTZENHART
Checked By J.P. HALSTEAD Date 10/99 Bridge Design Supervisor

PROJECT MIDDLESEX-BOLTON PROJECT NO. IM-089-2(26)