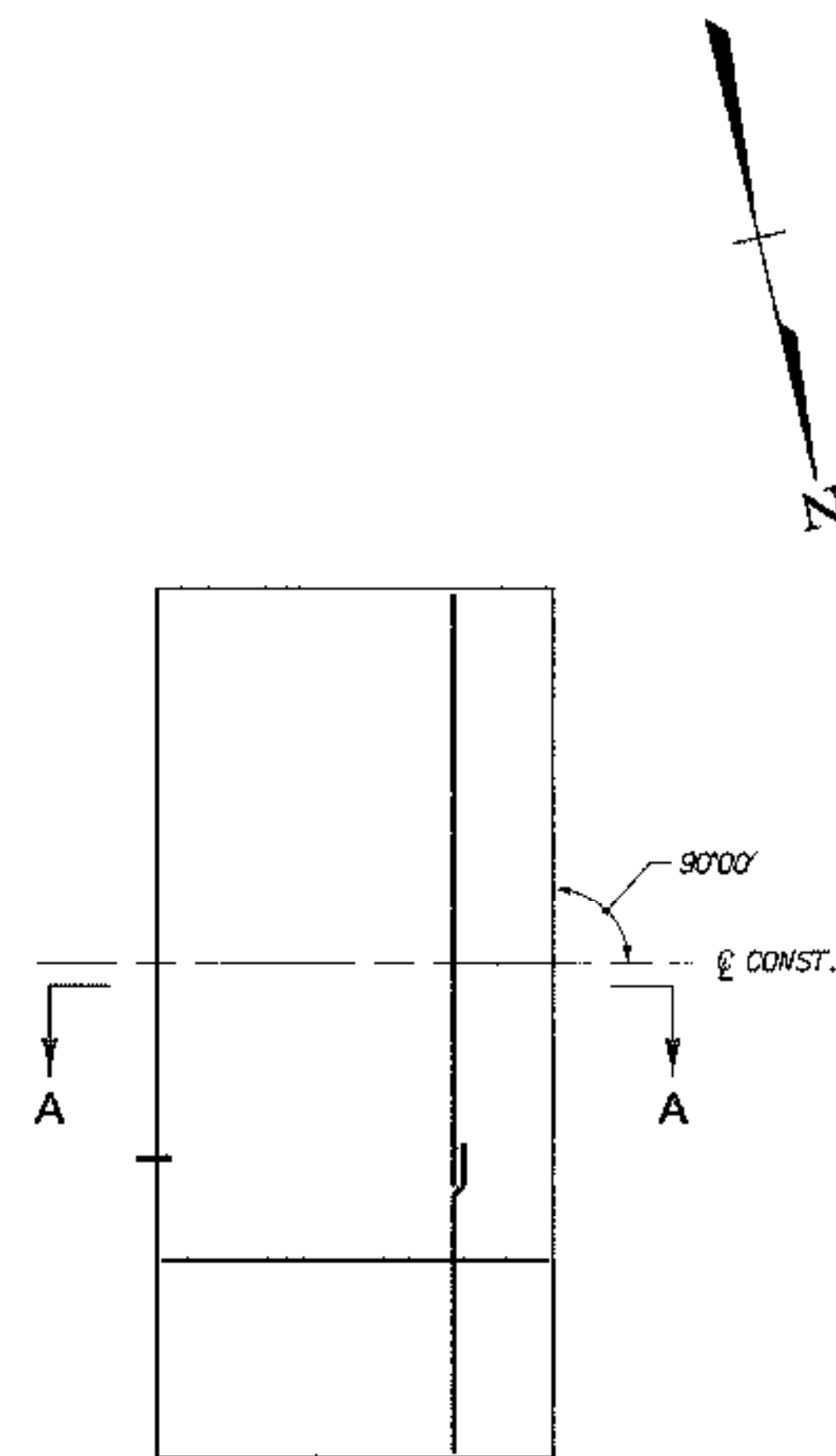
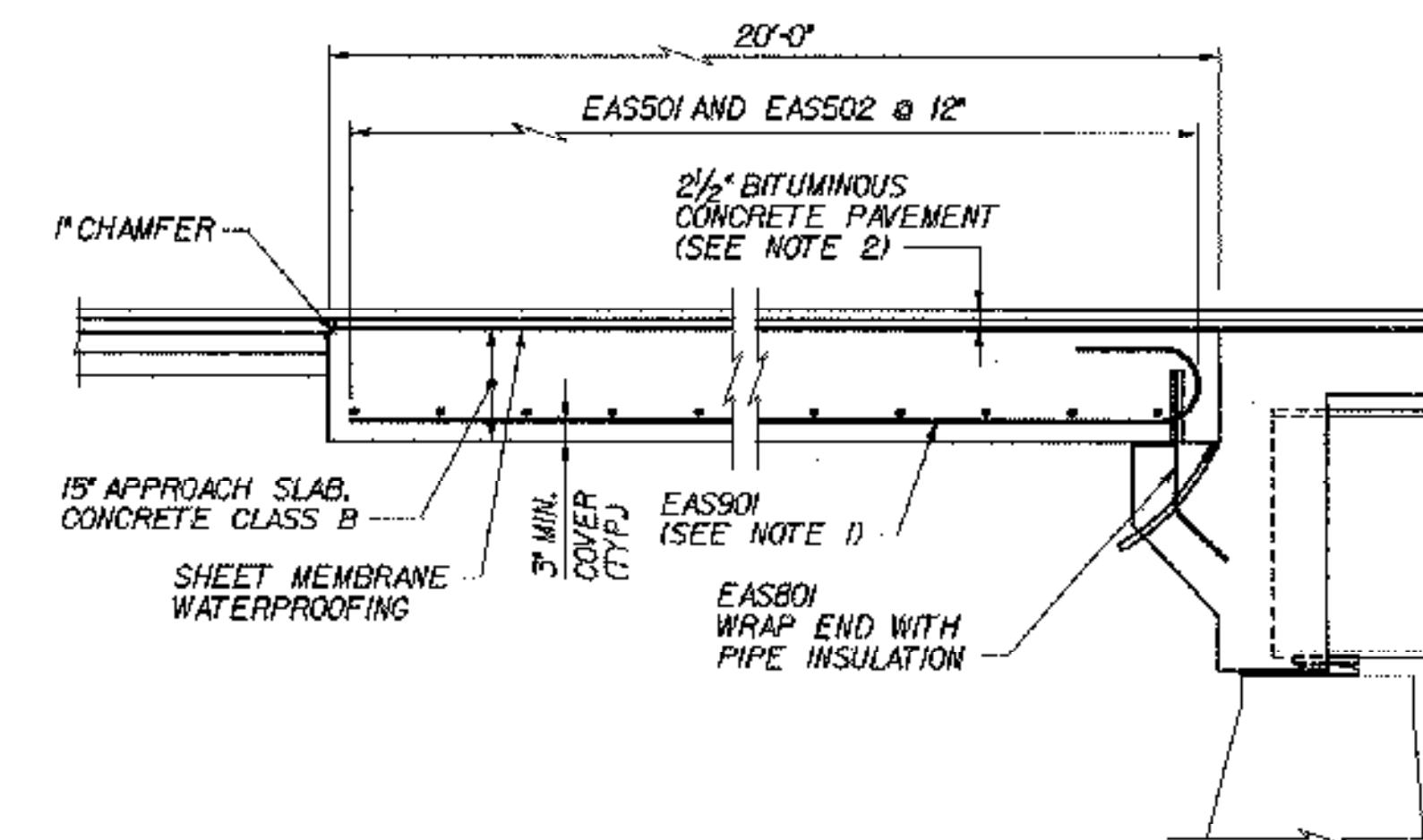


49N ABUTMENT 1



49N ABUTMENT 2

APPROACH SLAB PLANS
(49N SHOWN; 49S SIMILAR)
SCALE: 1/8" = 1'-0"



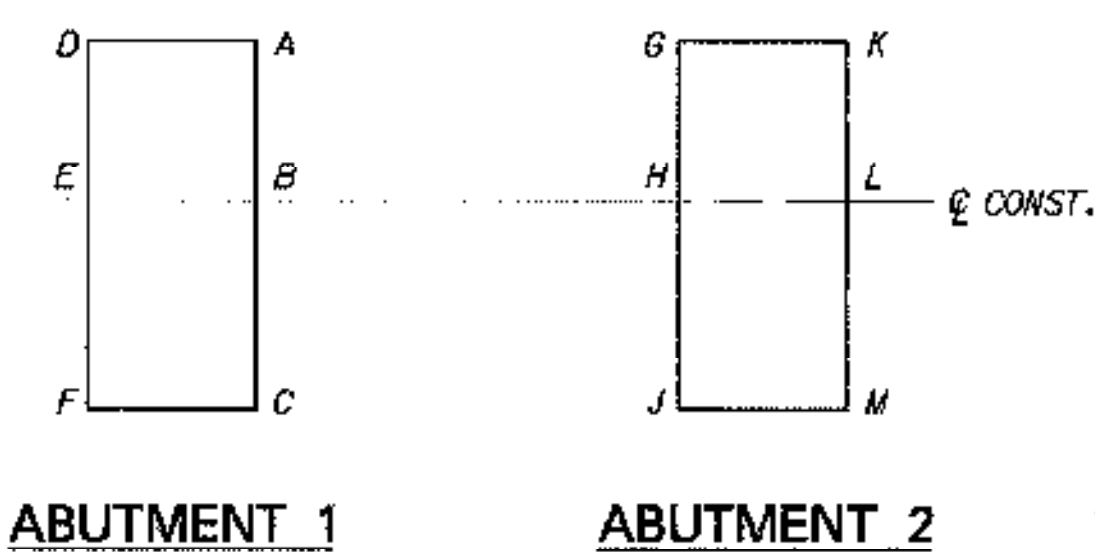
SECTION A-A
(APPROACH SLAB AT FIXED ABUT. SHOWN;
SLAB AT EXPANSION ABUT. SIMILAR)
N.T.S.

RAISED BRIDGE 49N FINISH GR. 1/2"
RAISED BRIDGE 49S FINISHED GR. 5/8"

TOP OF APPROACH SLAB ELEVATIONS						
BR 49N			BR 49S			
LOCATION	STATION	ELEVATION	LOCATION	STATION	ELEVATION	
A	12+12.22	453.06-.09	A	11+98.17	452.82	452.87
B	12+12.22	453.45-.49	B	11+98.17	453.34	453.39
C	12+12.22	452.93-.97	C	11+98.17	452.94	453.99
D	11+92.22	452.94-.98	D	11+78.17	452.68	452.73
E	11+92.22	453.34-.38	E	11+78.17	453.21	453.26
F	11+92.22	452.82-.86	F	11+78.17	452.81	452.86
G	13+12.85	453.61-.65	G	12+98.90	453.48	453.53
H	13+12.85	454.01-.05	H	12+98.90	454.00	454.05
J	13+12.85	453.49-.53	J	12+98.90	453.60	453.65
K	13+32.85	453.73-.77	K	13+18.90	453.61	453.66
L	13+32.85	454.12-.16	L	13+18.90	454.13	454.18
M	13+32.85	453.80-.64	M	13+18.90	453.73	453.78

NOTES:

- TIP HOOK END OF BAR AS REQUIRED TO ACHIEVE MINIMUM COVER.
- FOR DETAILS OF APPROACH SLAB PAVEMENT AND TRANSITION TO EXISTING PAVEMENT, SEE DETAIL ON TYPICAL END OF DECK SLAB DETAILS, BRIDGE SHEET C-15.



APPROACH SLAB ELEVATION KEY
N.T.S.

**STATE OF VERMONT
AGENCY OF TRANSPORTATION**

Town Of	MIDDLESEX-BOLTON	Bridge No.	49N&S
Highway No.	I-89	Log Sta.	
		Surv. Sta.	
I-89 OVER TH 7			
APPROACH SLAB DETAILS (49N&S)			
Designed By	P.W. SZUSTAK	Drawn By	R.A. BOTZENHART
Checked By	J.P. HALSTEAD	Bridge Design Supervisor	J.P. HALSTEAD
Date	10/99	Date	10/99
PROJECT	MIDDLESEX-BOLTON	PROJECT NO.	IM-089-2(26)
TVGA CAD Drawing No.	49apslab	Date	10/99
Bridge Sheet No.	BR49-6	Sheet	80 of 307