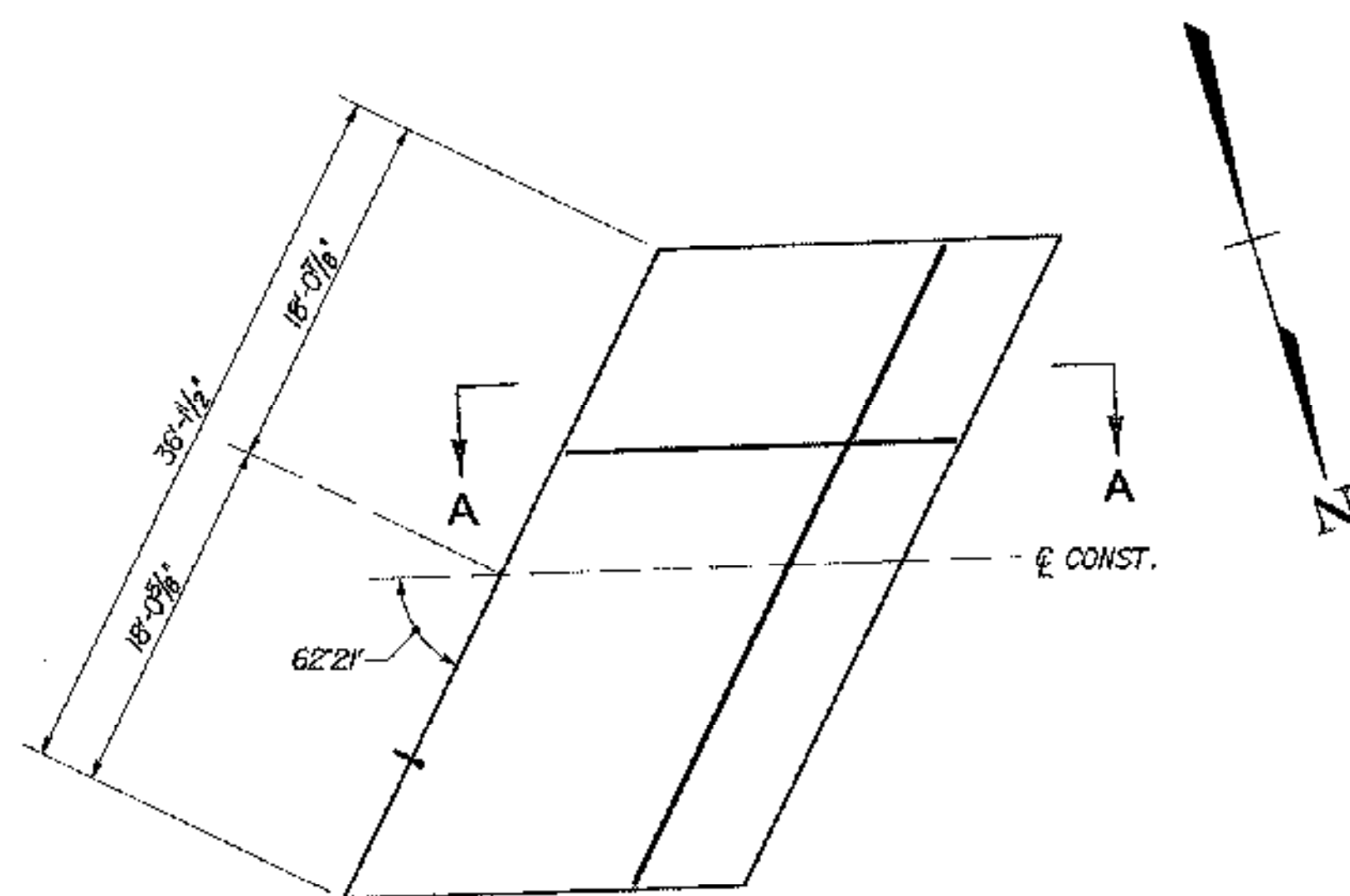
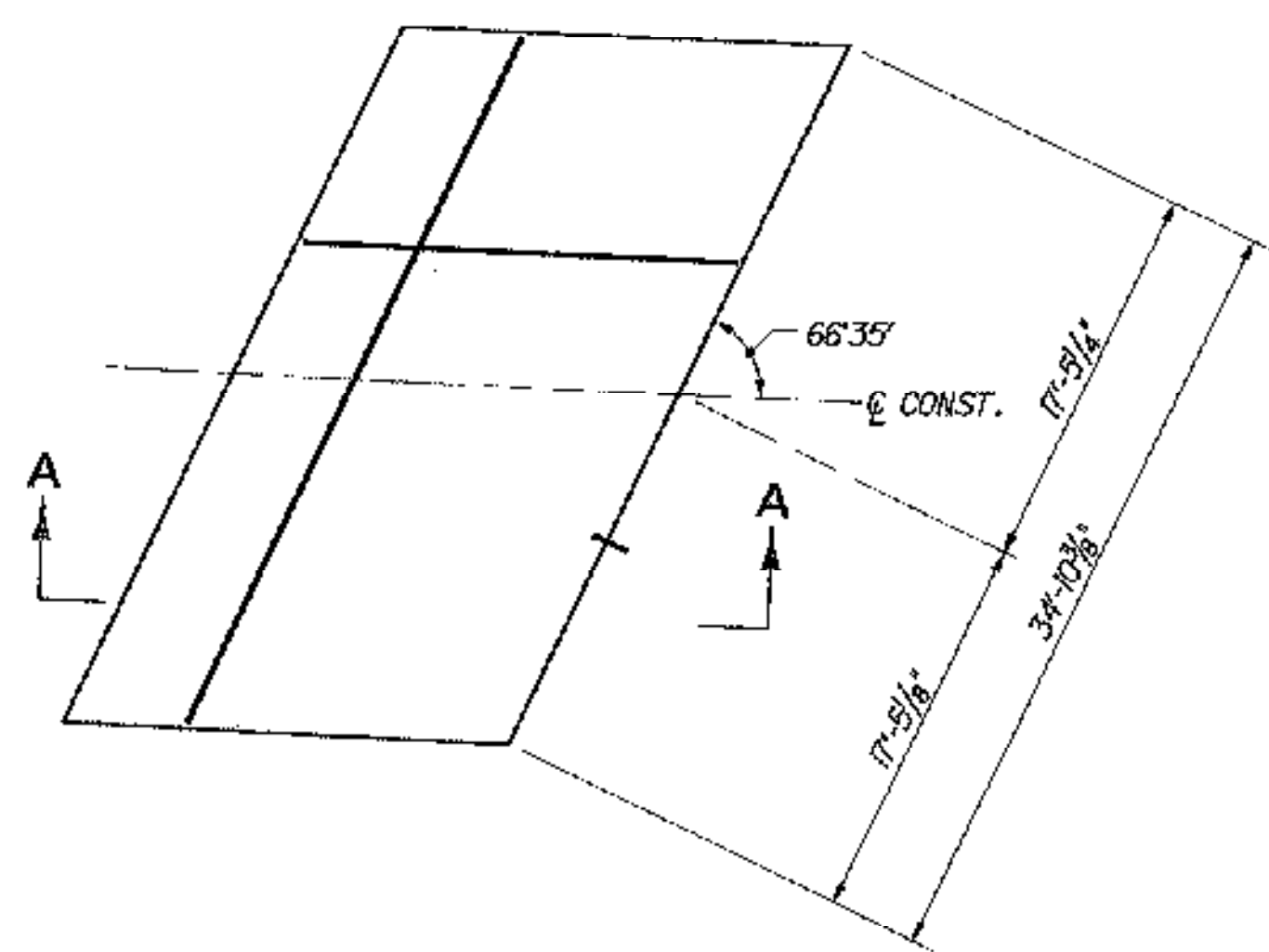


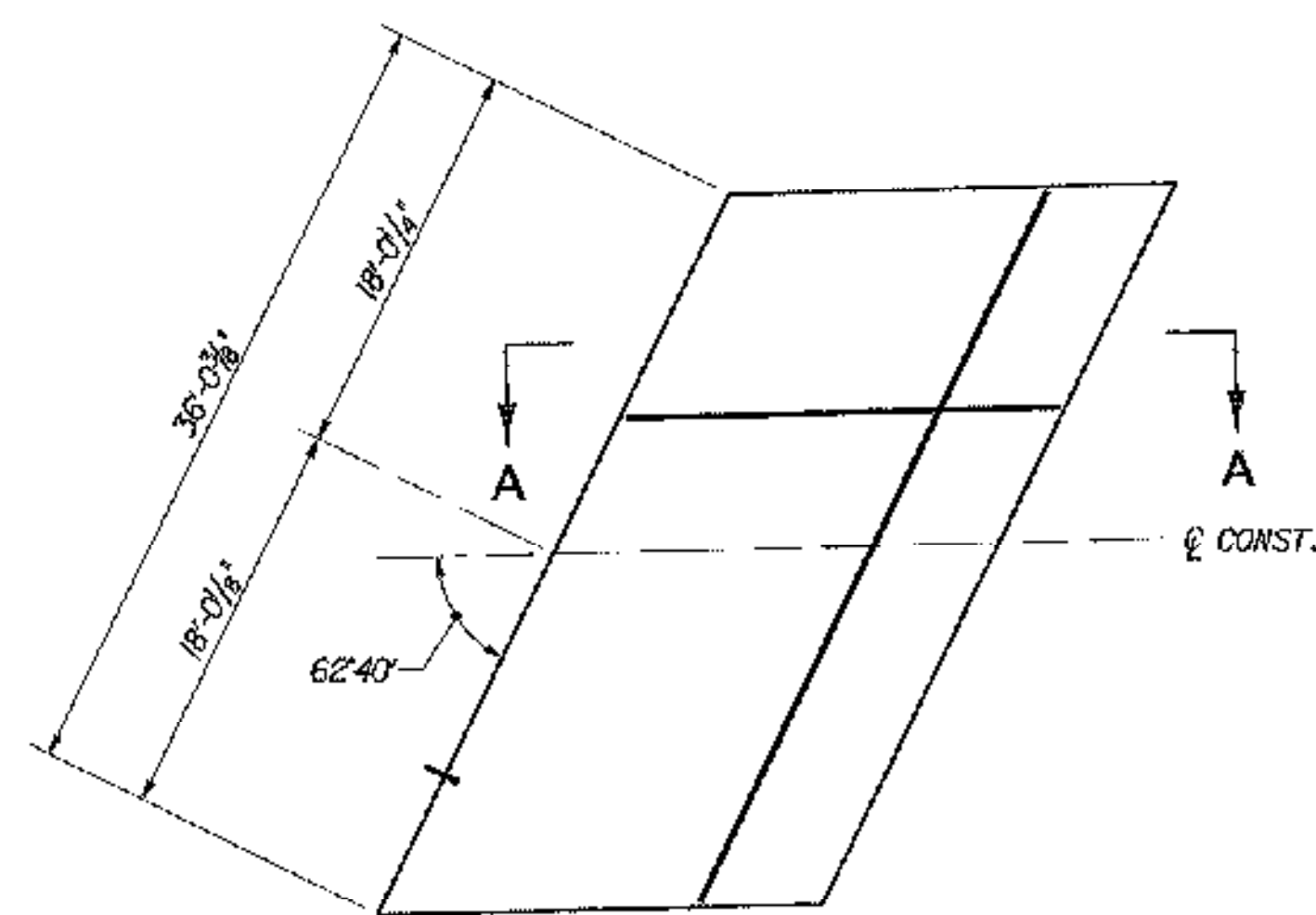
48S ABUTMENT 1



48S ABUTMENT 2



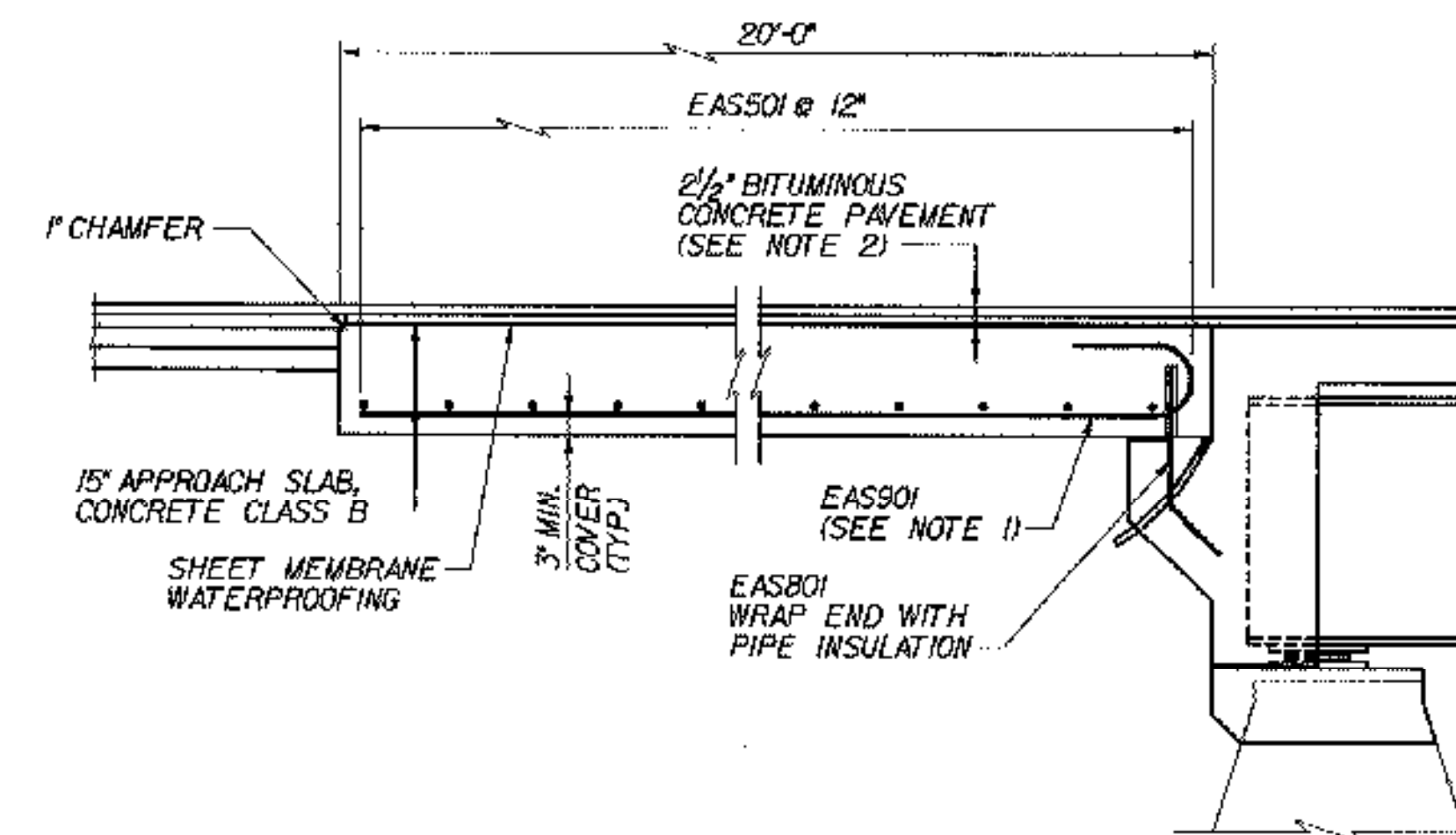
48N ABUTMENT 1



48N ABUTMENT 2

APPROACH SLAB PLANS

SCALE: 1/8" = 1'-0"



SECTION A-A

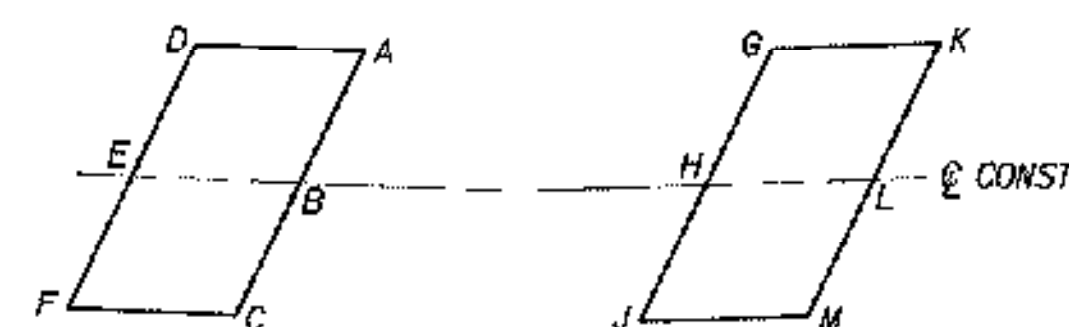
(APPROACH SLAB AT FIXED ABUT. SHOWN;
SLAB AT EXPANSION ABUT. SIMILAR)
N.T.S.

RAISED FINISHED GRADE 5/4" RAISED FINISHED GRADE 3/4"

TOP OF APPROACH SLAB ELEVATIONS					
BR 48N			BR 48S		
LOCATION	STATION	ELEVATION	LOCATION	STATION	ELEVATION
A	4+13.74	449.55.99	A	4+30.00	448.74
B	4+06.79	449.18.62	B	4+31.88	449.38
C	3+98.89	449.81.25	C	4+24.89	450.01
D	3+83.66	449.44.88	D	4+18.80	448.64
E	3+86.70	449.07.51	E	4+11.86	449.27
F	3+79.88	449.71.15	F	4+04.98	449.91
G	7+14.80	450.17.61	G	7+40.99	450.32
H	7+06.49	450.80.24	H	7+32.56	450.95
J	6+98.24	451.43.87	J	7+24.21	451.68
K	7+34.89	450.28.72	K	7+61.08	450.43
L	7+26.49	450.94.35	L	7+52.58	451.05
M	7+18.14	451.54.98	M	7+44.11	451.88

NOTES:

- TIP HOOK END OF BAR AS REQUIRED TO ACHIEVE MINIMUM COVER.
- FOR DETAILS OF APPROACH SLAB PAVEMENT AND TRANSITION TO EXISTING PAVEMENT, SEE DETAIL ON TYPICAL END OF DECK SLAB DETAILS, BRIDGE SHEET C-15.



ABUTMENT 1

ABUTMENT 2

APPROACH SLAB ELEVATION KEY

N.T.S.

STATE OF VERMONT
AGENCY OF TRANSPORTATION

Town Of MIDDLESEX-BOLTON Bridge No. 48N&S
Highway No. I-89 Log Sta. Surv. Sta.

I-89 OVER LITTLE RIVER

APPROACH SLAB DETAILS (48N&S)

Designed By P.W. SZUSTAK Drawn By R.A. BOTZENHART
Checked By J.P. HALSTEAD Date 10/99 Bridge Design Supervisor J.P. HALSTEAD Date 10/99

PROJECT MIDDLESEX-BOLTON PROJECT NO. IM-089-2(26)

TVGA CAD Drawing No. 48apslab Date 10/99
Bridge Sheet No. BR48-6 Sheet 66 of 307