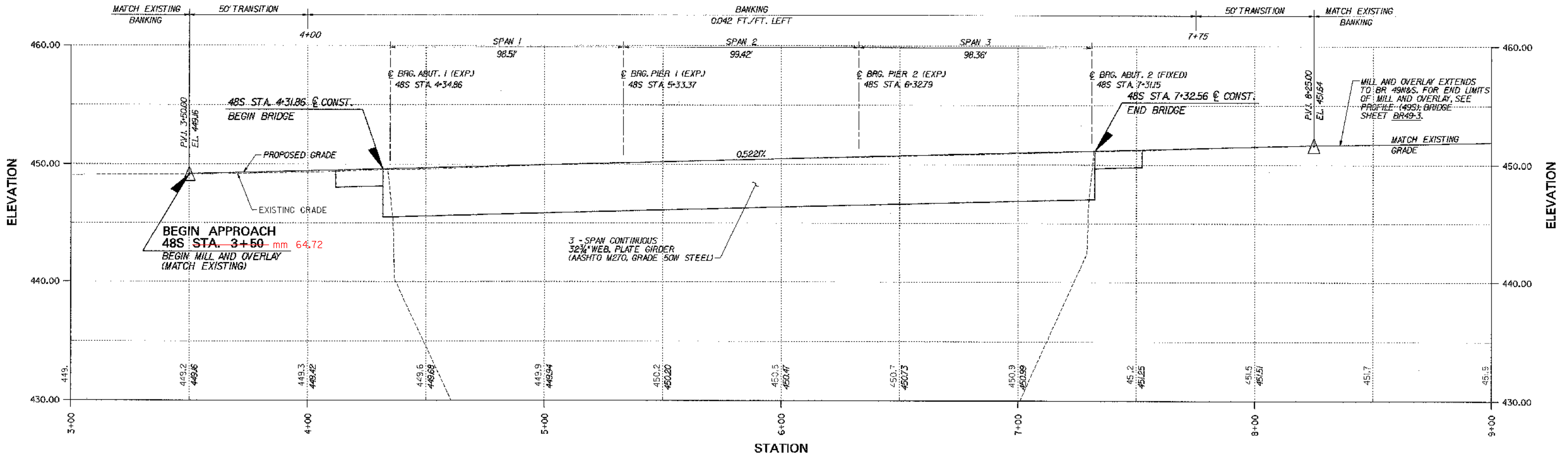
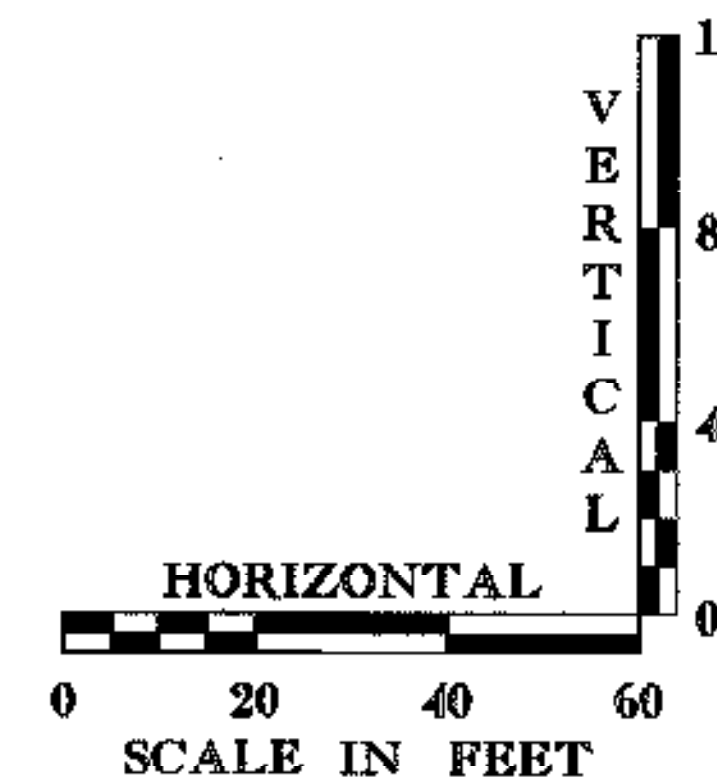


NOTE: RAISED BRIDGE 48S FIN. GRADE 0.27'



PROFILE - BR 48S



STATE OF VERMONT
AGENCY OF TRANSPORTATION

Town Of	MIDDLESEX-BOLTON	Bridge No.	485
Highway No.	I-89	Log Sta.	
		Surv. Sta.	

I-89 SB OVER LITTLE RIVER
PROFILE (48S)

Designed By	P.W. SZUSTAK	Drawn By	R.A. BOTZENHART
Checked By	J.P. HALSTEAD	Date	10/99
		Bridge Design Supervisor	J.P. HALSTEAD
		Date	10/99

PROJECT	MIDDLESEX-BOLTON	PROJECT NO.	IM-089-2(26)
---------	------------------	-------------	--------------

TVGA CAD Drawing No.	48spraf	Date	10/99
Bridge Sheet No.	BR48-3	Sheet	63 of 307

