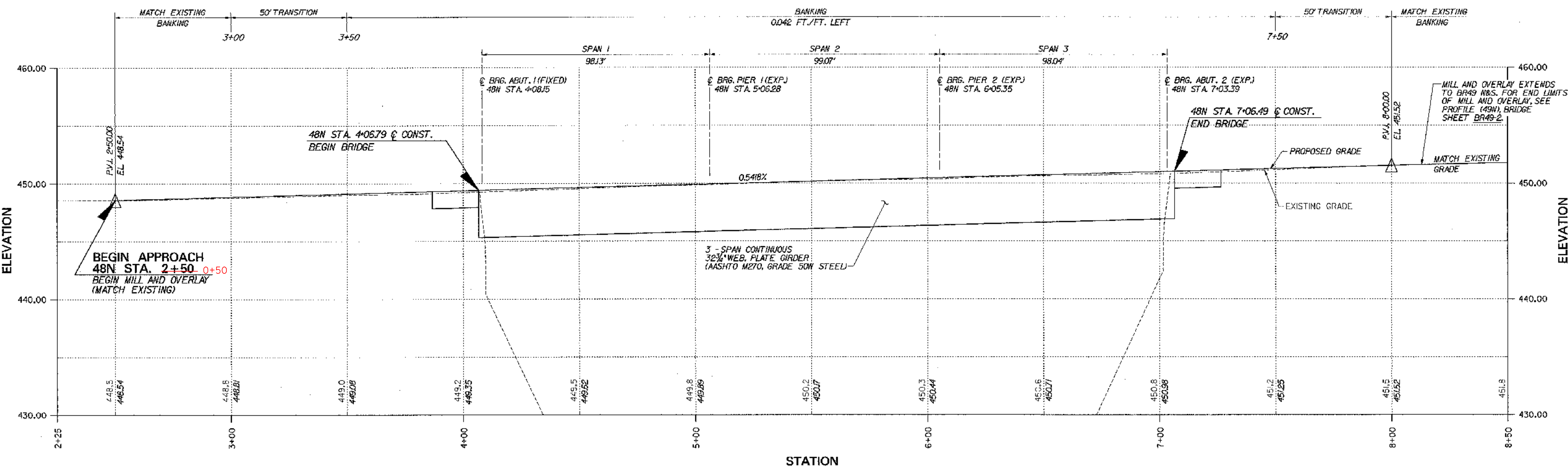
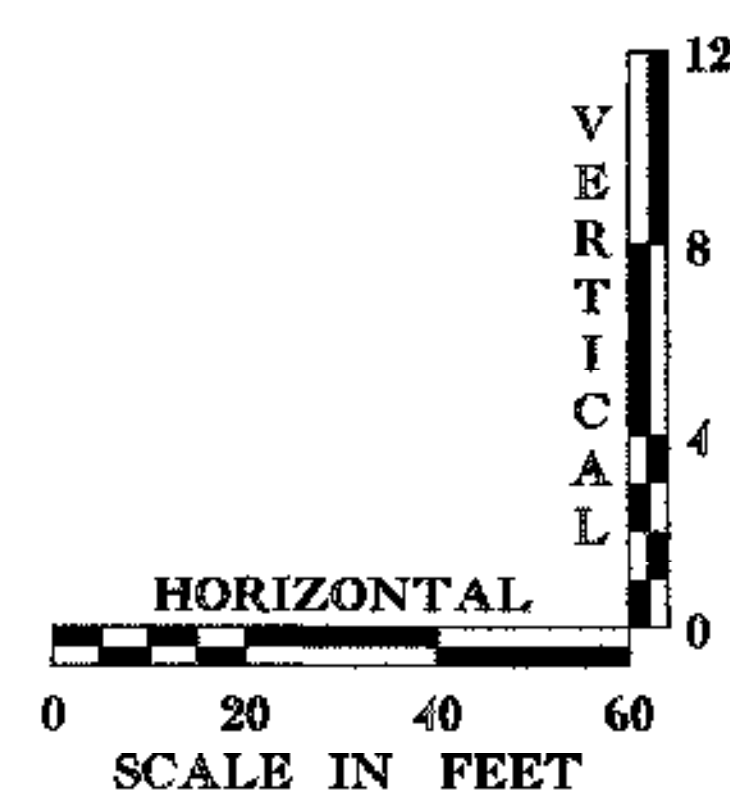


NOTE: RAISED BRIDGE 48N FIN. GRADE 0.44'



PROFILE - BR 48N



STATE OF VERMONT AGENCY OF TRANSPORTATION			
Town Of	MIDDLESEX-BOLTON	Bridge No.	48N
Highway No.	I-89	Log Sta.	
		Surv. Sta.	
I-89 NB OVER LITTLE RIVER			
PROFILE (48N)			
Designed By	P.W. SZUSTAK	Drawn By	R.A. BOTZENHART
Checked By	J.P. HALSTEAD	Bridge Design Supervisor	J.P. HALSTEAD
Date	10/99	Date	10/99
PROJECT	MIDDLESEX-BOLTON	PROJECT NO.	IM-089-2(26)
TVGA CAD Drawing No.	48nprof	Date	10/99
Bridge Sheet No.	BR48-2	Sheet	62 of 307

TVGA TVGA ENGINEERING, SURVEYING, P.C.