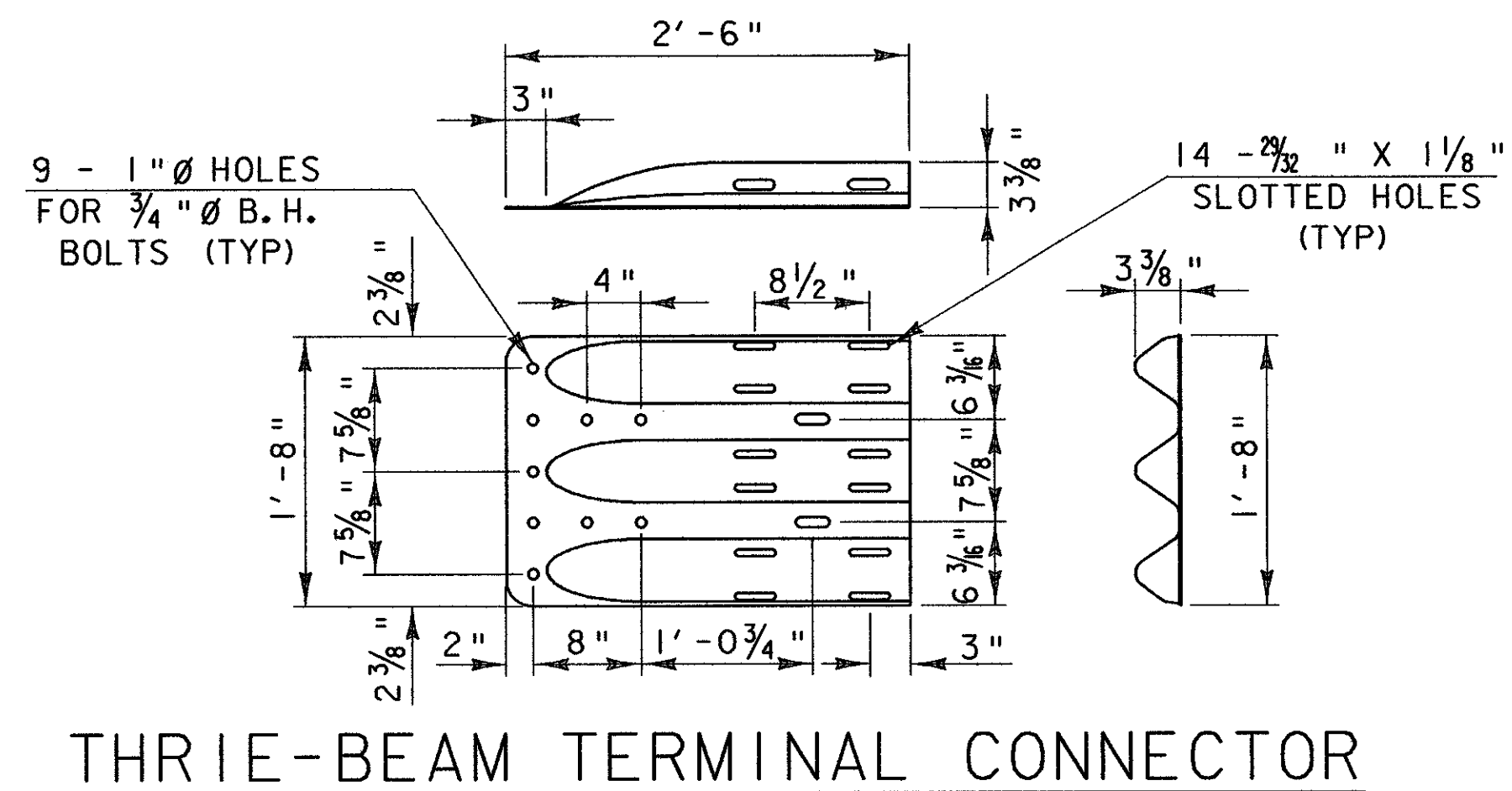
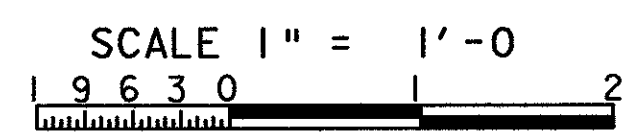
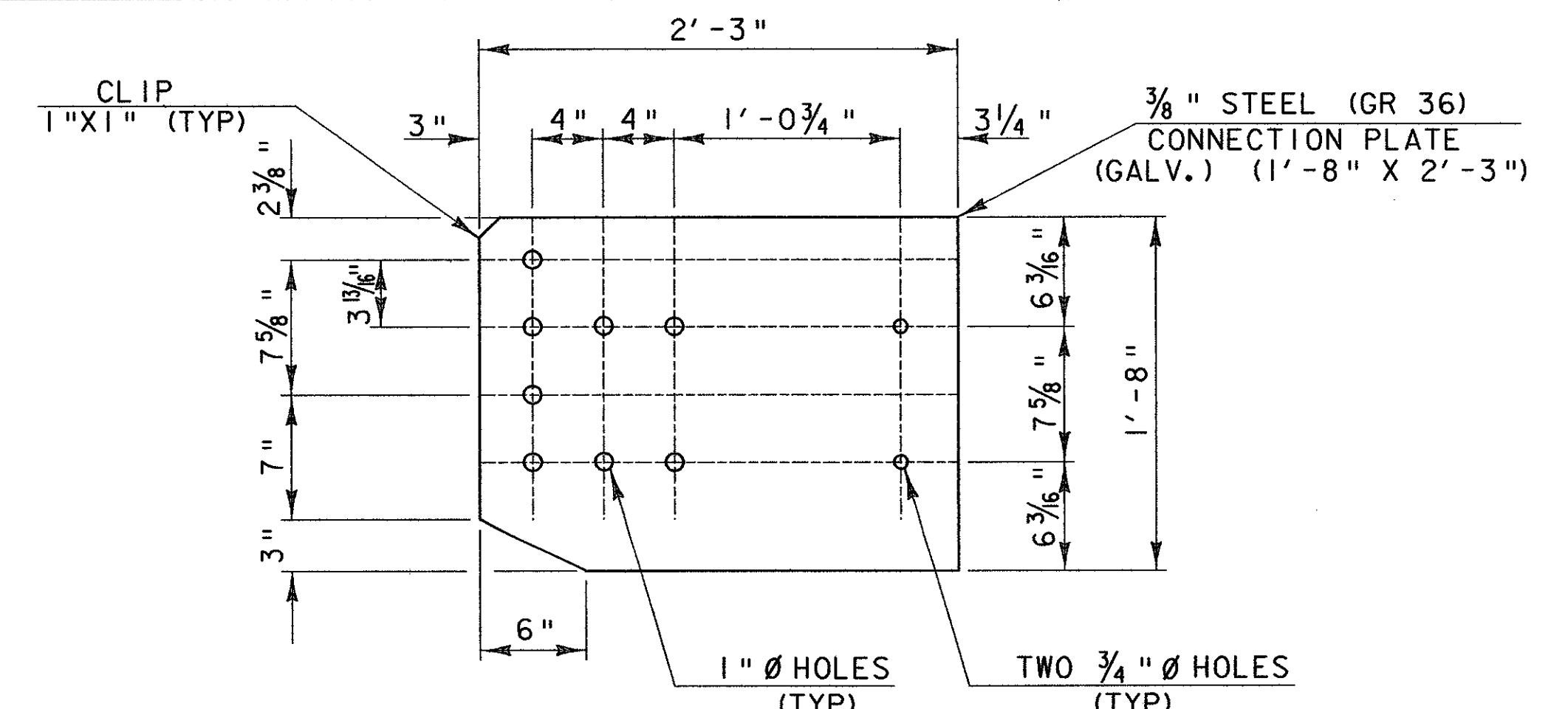
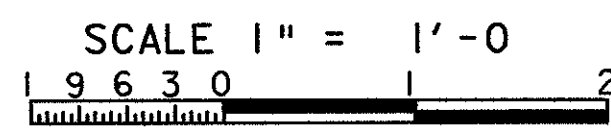


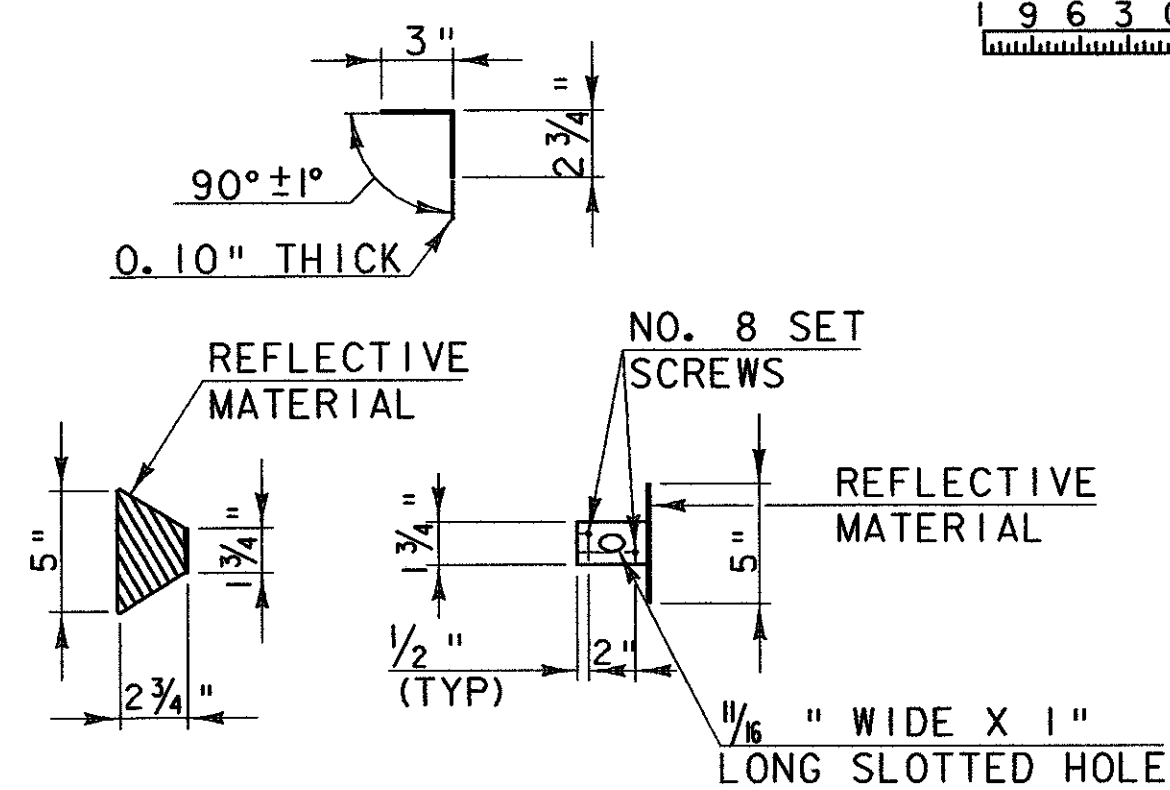
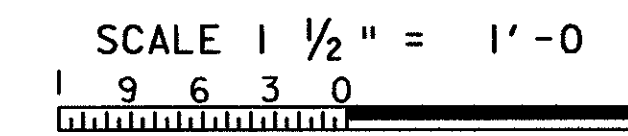
SECTION B-B (POST RAIL ASSEMBLY)



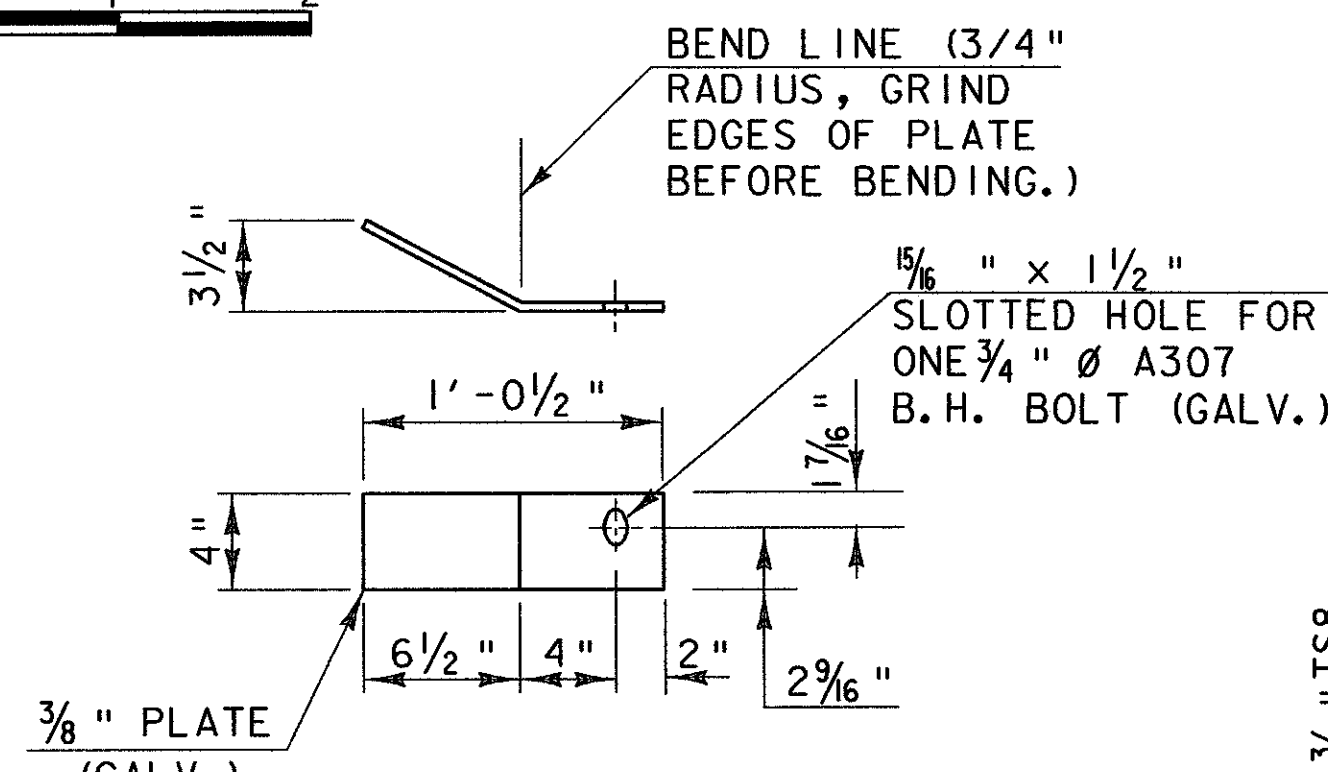
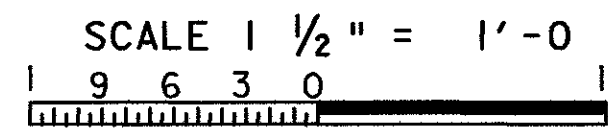
THREE-BEAM TERMINAL CONNECTOR



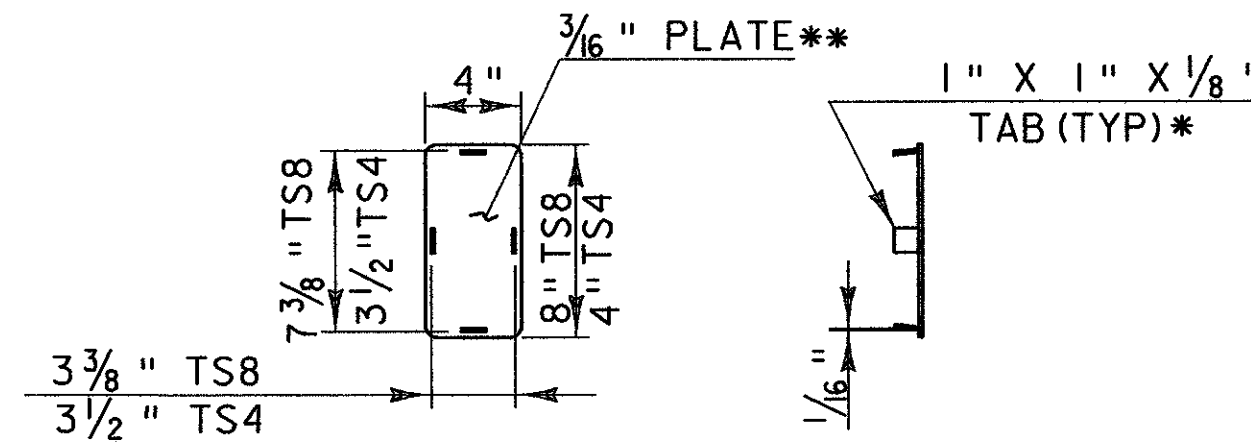
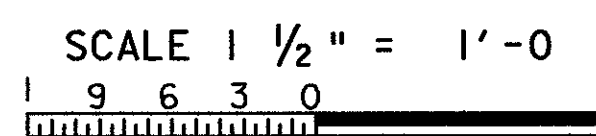
CONNECTION PLATE



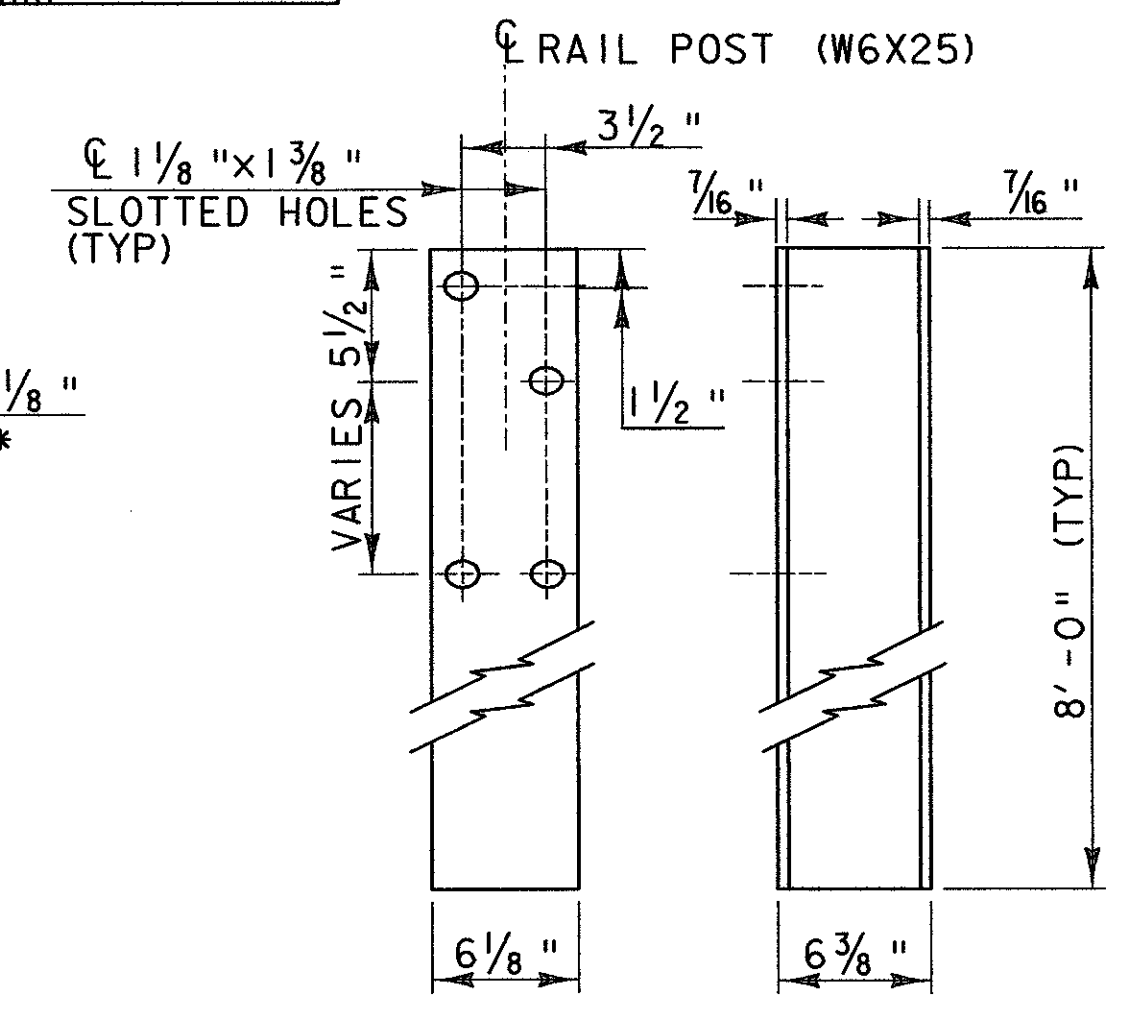
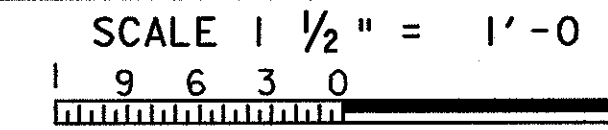
DELINEATION DEVICE DETAILS



DEFLECTOR PLATE DETAIL

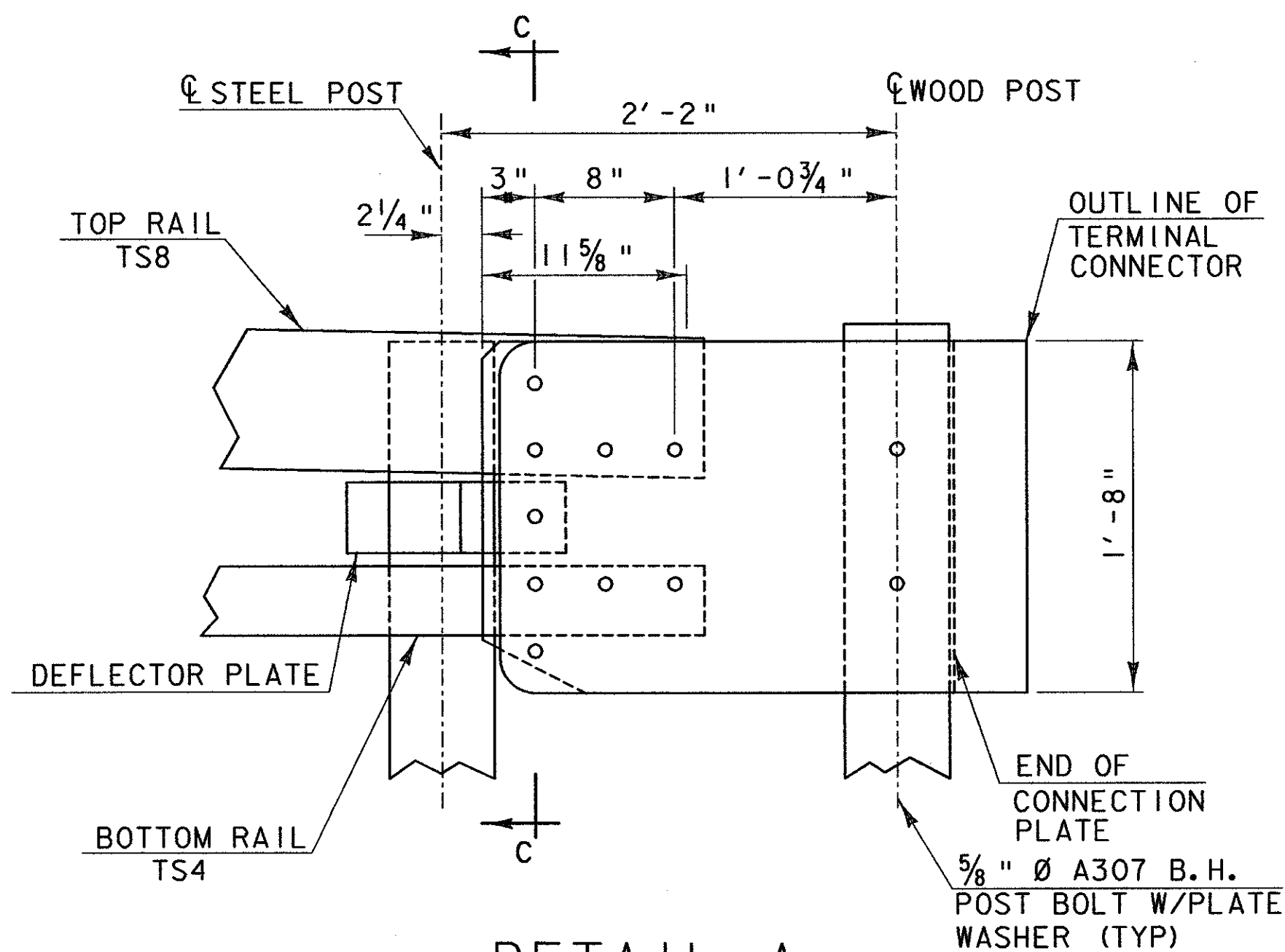
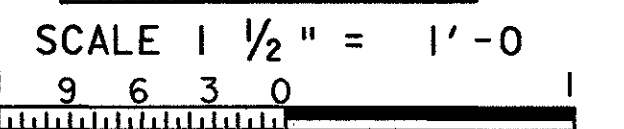


END CAP DETAIL

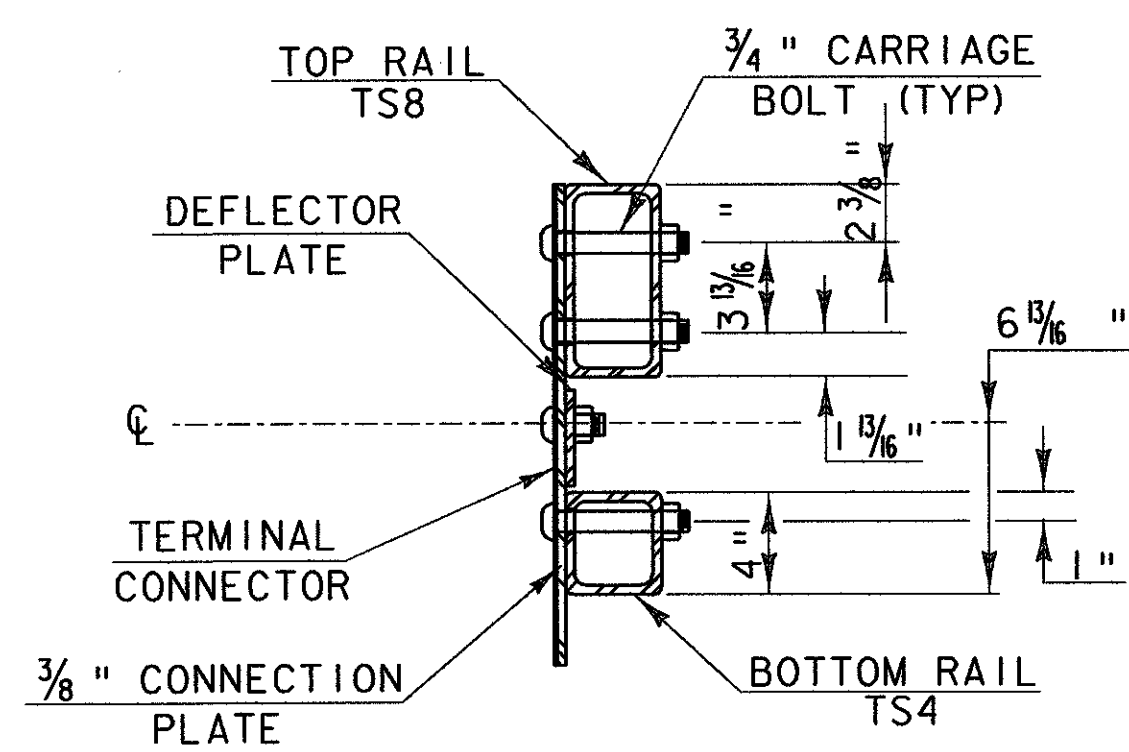
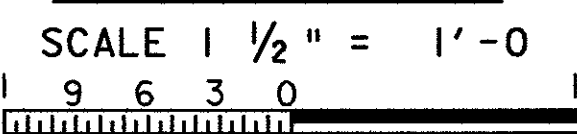


FRONT VIEW SIDE VIEW

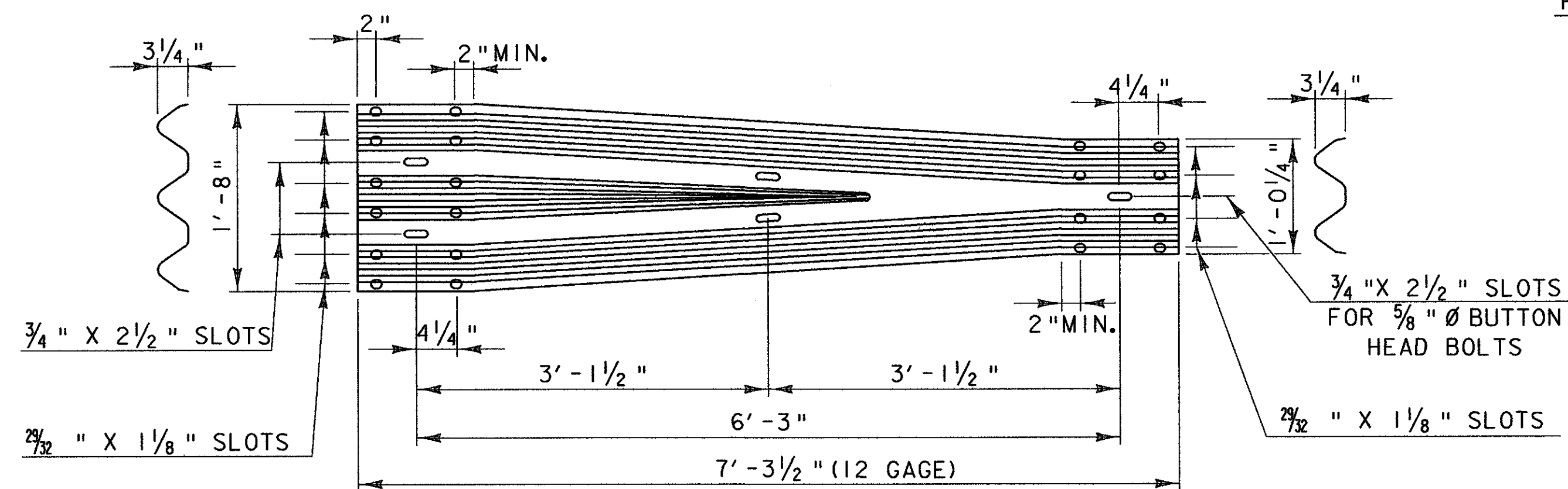
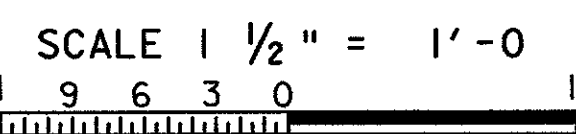
RAIL POST



DETAIL A



SECTION C-C (CONNECTION PLATE)



THREE-BEAM TO HDSB TRANSITION SECTION



\* WELD TABS TO END CAP PLATE IN TAPERED POSITION SO CAP CAN BE JAMMED INTO END OF RAIL TUBE.  
\*\* ROUND CORNERS 1/2\"/>

**STATE OF VERMONT AGENCY OF TRANSPORTATION**

Town Of	MIDDLESEX-BOLTON	Bridge No.	
Highway No.	1-89	Log Sta.	
		Surv. Sta.	

**GUARD RAIL APPROACH SECTION**

**NETC 2 RAIL (SHEET 2 OF 2)**

Designed By	C.P. WILLIAMS	Drawn By	D.G. BASSETT
Checked By	S. FARNSWORTH	Date	10/99
		Bridge Design Supervisor	J.P. HALSTEAD Date 10/99
PROJECT	MIDDLESEX-BOLTON	PROJECT NO.	IM-089-2(26)
TVGA CAD Drawing No.	netambob	Date	10/99
Bridge Sheet No.	C-46B	Sheet	46B of 307