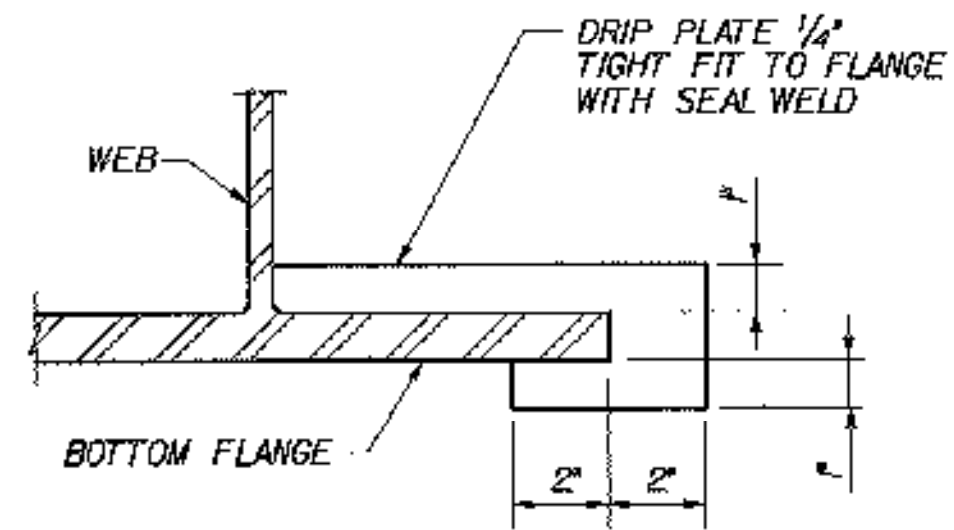


PLAN

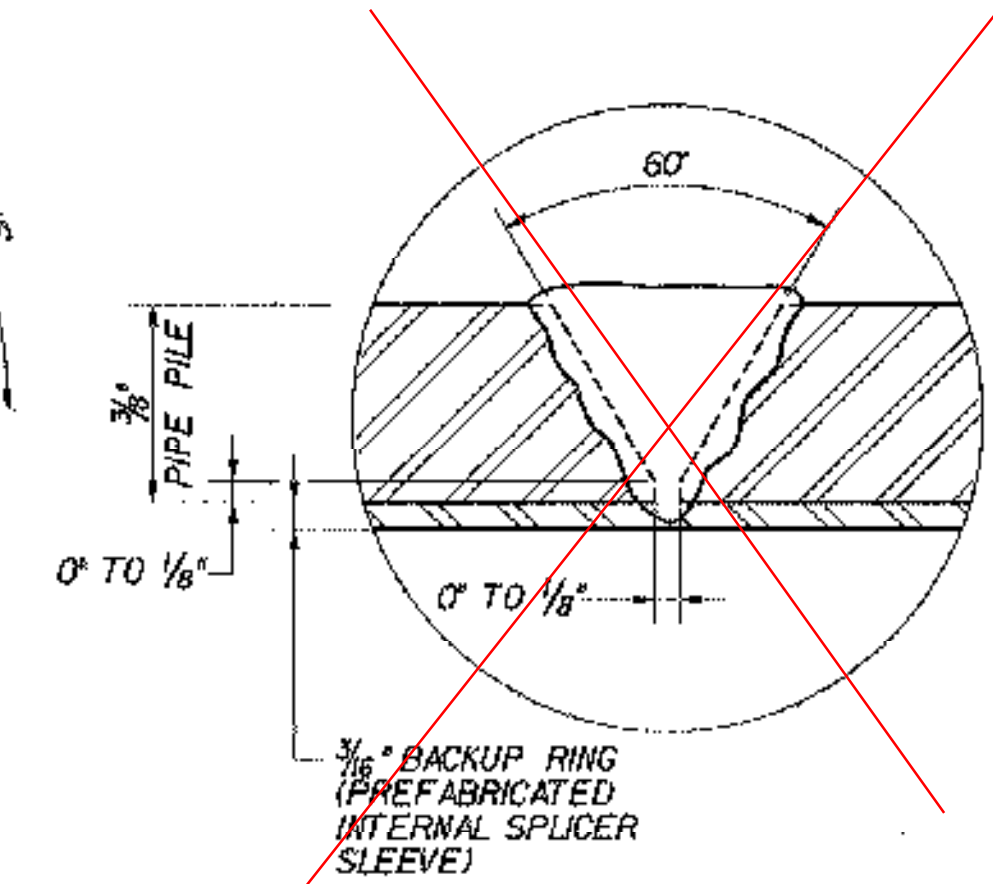
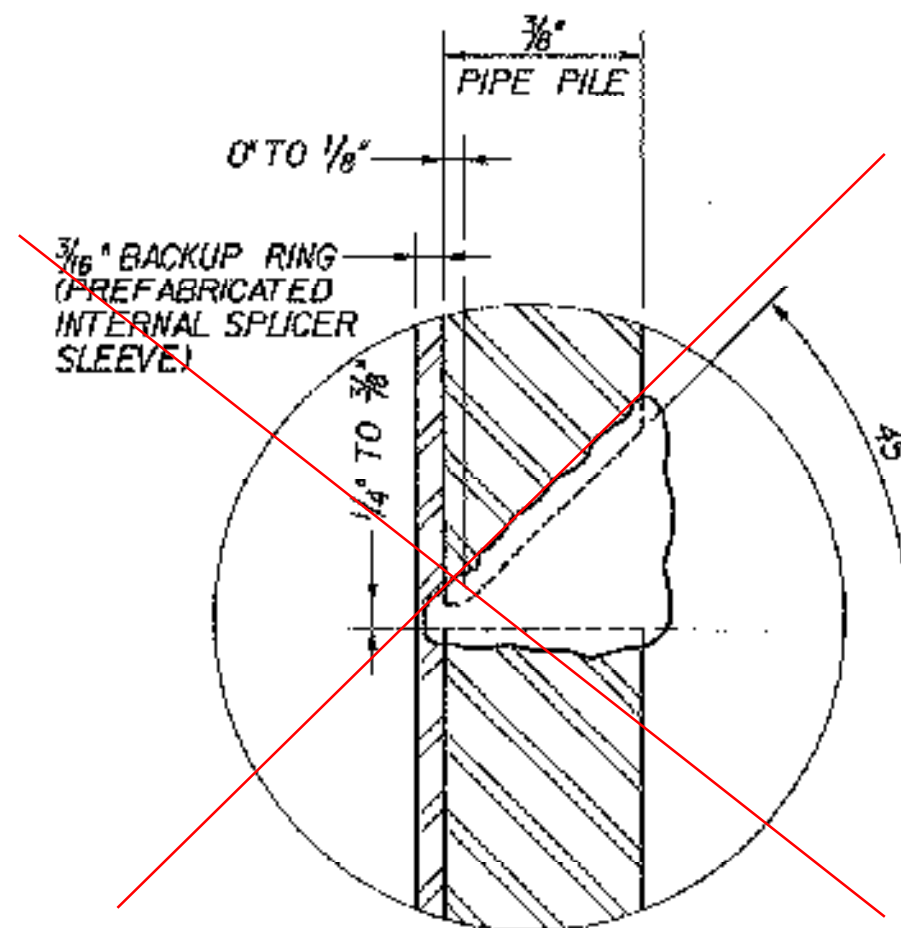


SECTION B-B

**DRIP PLATE DETAIL**

N.T.S.

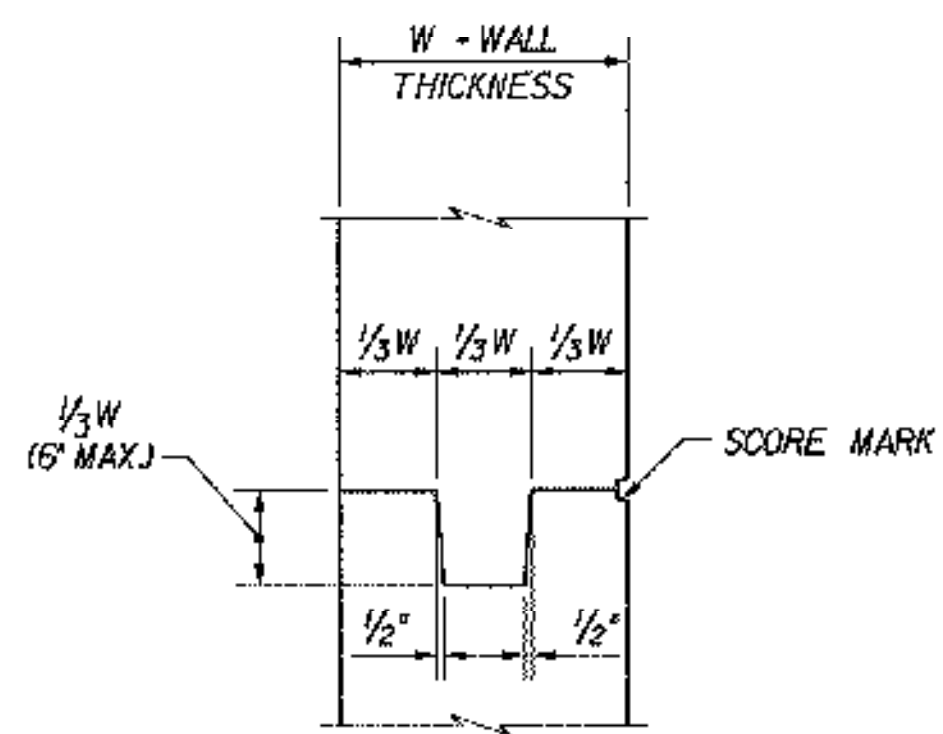
NOTE: DRIP PLATES SHALL BE PLACED ON OUTSIDE EDGE OF FASCIA STRINGERS ON THE HIGH SIDE OF ALL PIERS AND LOW ABUTMENTS OR AS INDICATED ON PROJECT PLANS.



**PIPE PILE SPLICE OPTIONS**

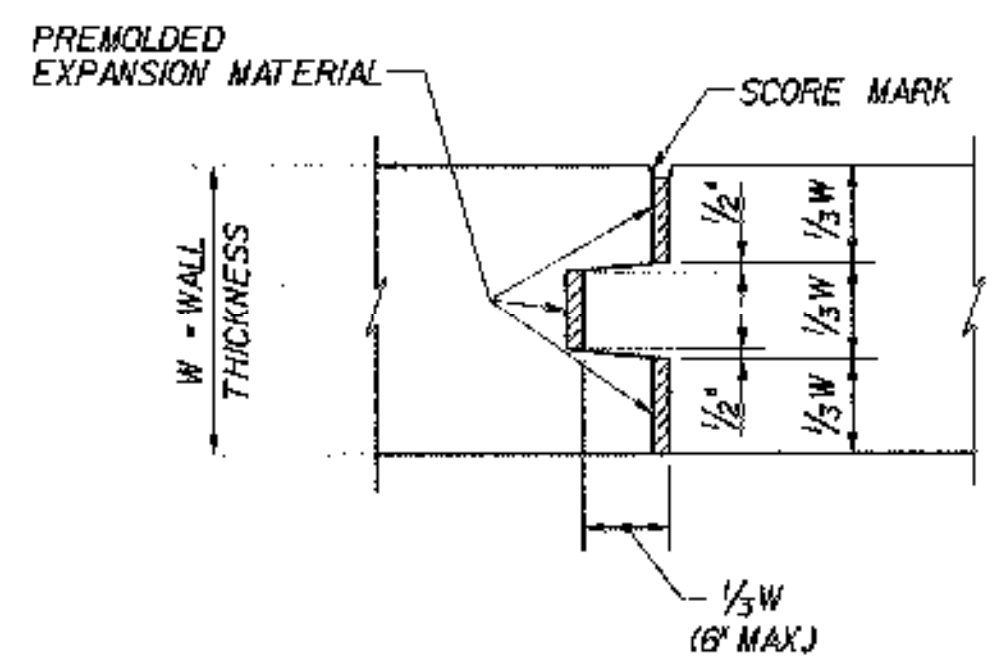
N.T.S.

BRIDGE 5118 NOT A PART OF THIS PROJECT



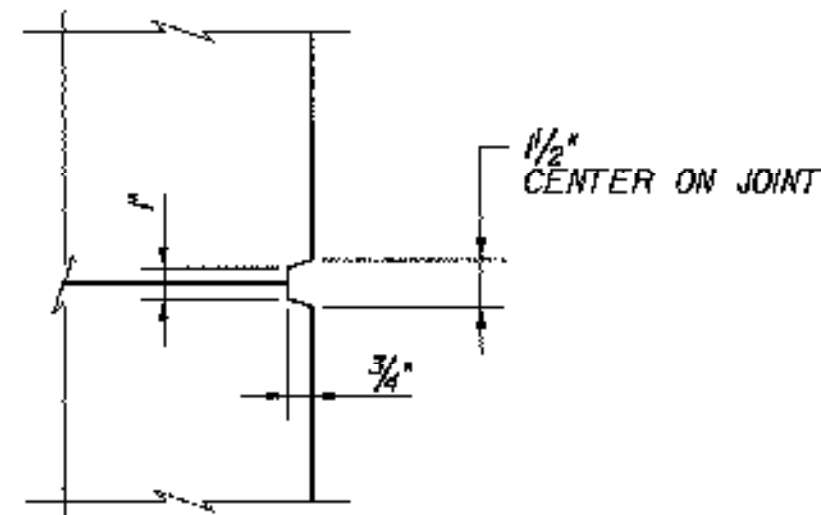
**TYPICAL CONCRETE CONSTRUCTION JOINT**

N.T.S.



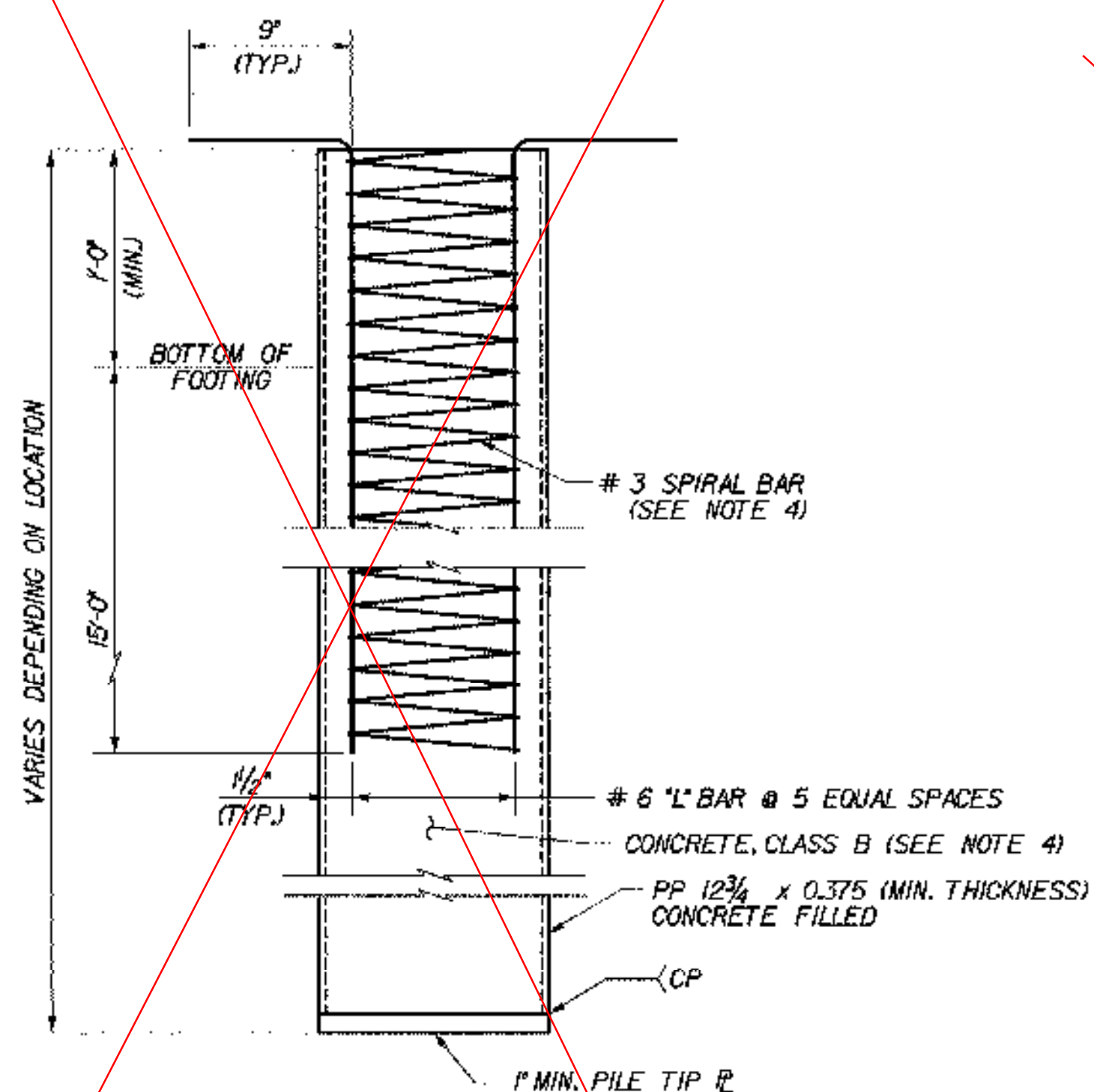
**TYPICAL CONCRETE EXPANSION JOINT**

N.T.S.



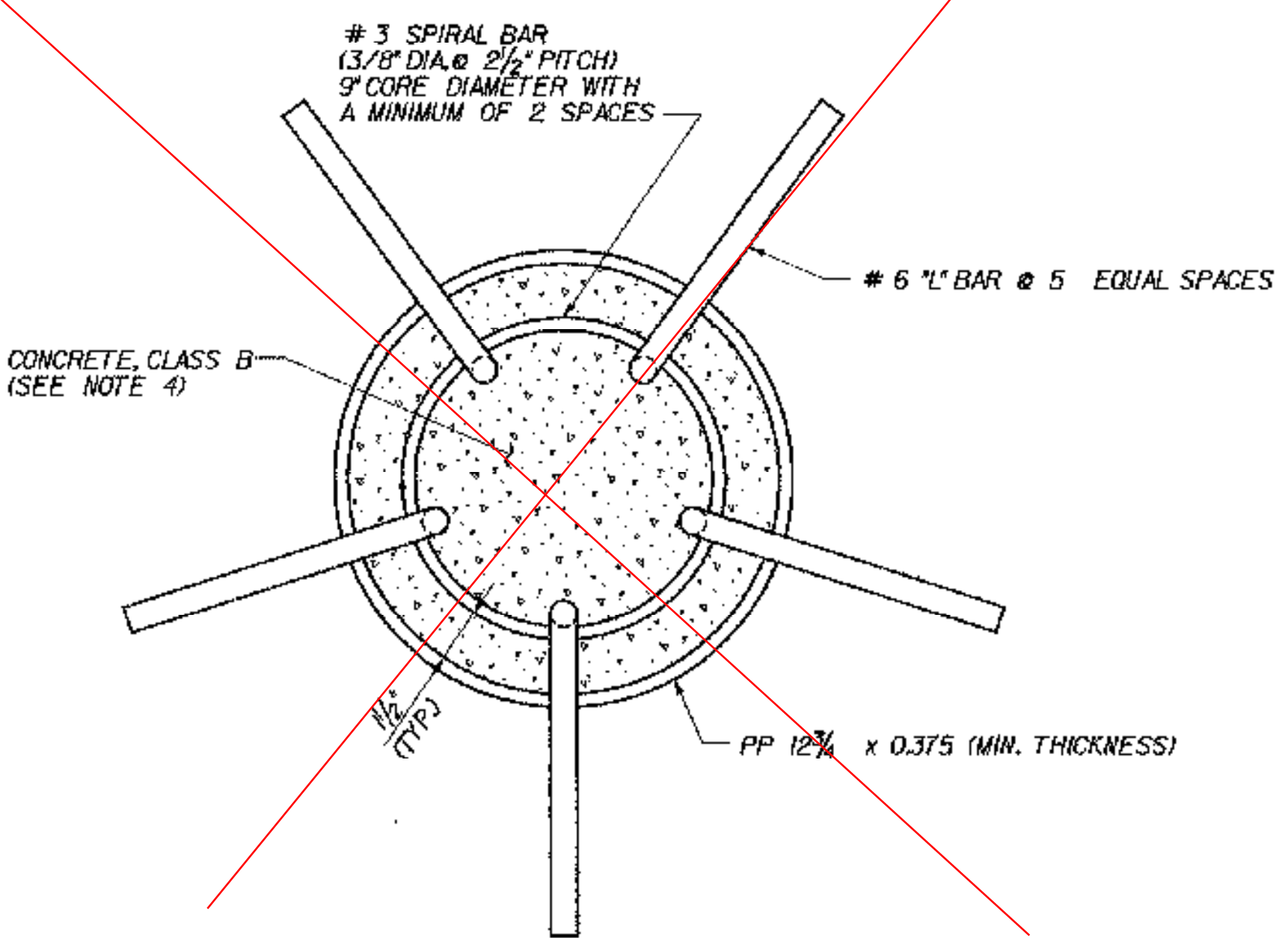
**SCORE MARK DETAIL**

N.T.S.



**ELEVATION**

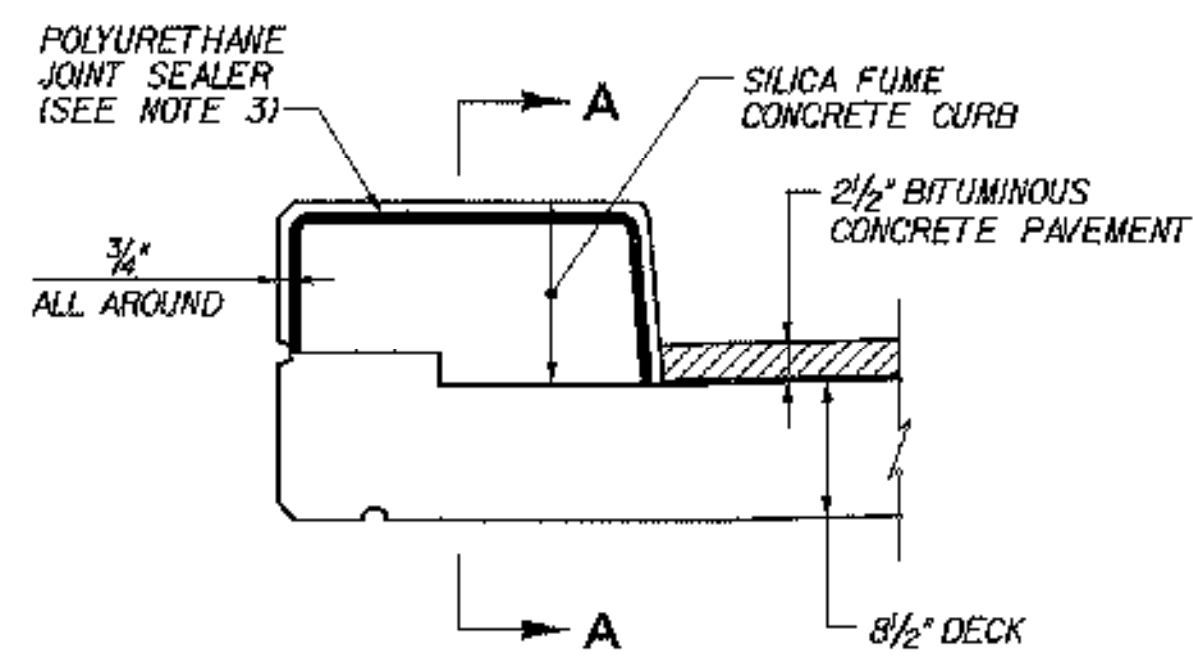
SCALE: 1/2" = 1'-0"



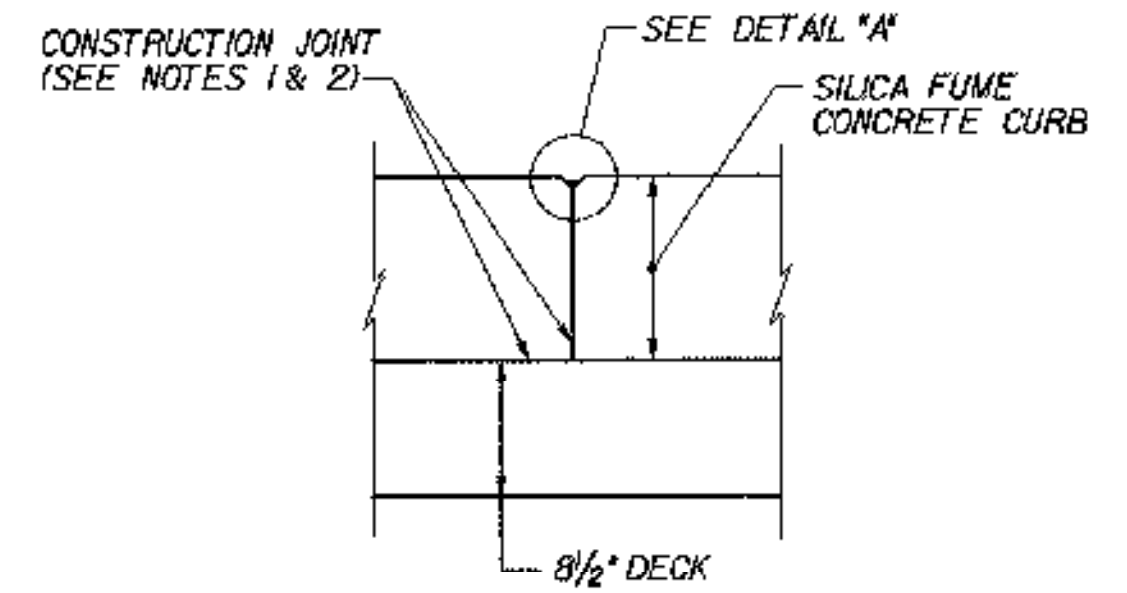
**PLAN**

SCALE: 3" = 1'-0"

**CAST-IN-PLACE CONCRETE PILING**



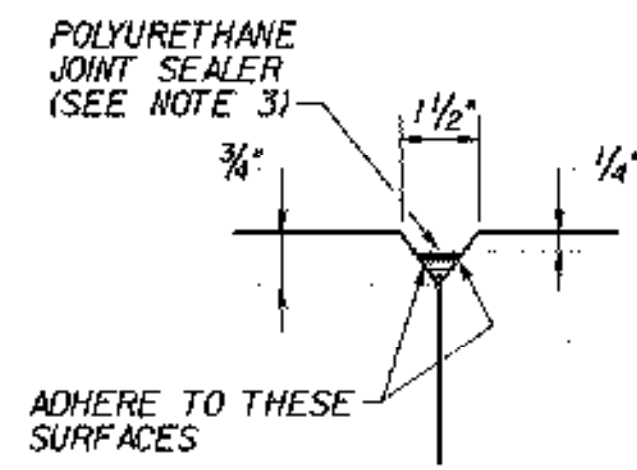
**TYPICAL SECTION THRU CONCRETE CURB CONSTRUCTION JOINT**



**SECTION A-A**

**CURB JOINT DETAILS**

N.T.S.



**DETAIL "A"**

**NOTES:**

1. CONSTRUCTION JOINTS THROUGH CONCRETE CURB SHALL BE SPACED MAXIMUM 15'-0" CENTER TO CENTER AND SHALL BE 1'-6" MINIMUM FROM THE CENTER OF THE NEAREST BRIDGE RAIL POST. CONCRETE SHALL BE PLACED IN ALTERNATING SECTIONS WITH A MINIMUM OF 48 HOURS DELAY BETWEEN ADJACENT POURS.
2. LONGITUDINAL REINFORCING SHALL PASS THROUGH CONCRETE CURB CONSTRUCTION JOINTS.
3. POLYURETHANE JOINT SEALER, PER SUBSECTION 524.06(G) OF THE SPECIFICATIONS, COLOR TO MATCH CONCRETE. COST SHALL BE SUBSIDIARY TO ITEM 501.60, "SILICA-FUME CONCRETE".
4. THE COST OF CONCRETE AND REINFORCING STEEL SHALL BE SUBSIDIARY TO ITEM 505.25, "CAST-IN-PLACE CONCRETE PILING".

**STATE OF VERMONT AGENCY OF TRANSPORTATION**

Town Of	MIDDLESEX-BOLTON	Bridge No.	
Highway No.	1-89	Log Sta.	
		Surv. Sta.	

**TYPICAL BRIDGE DETAILS**

Designed By	P.W. SZUSTAK	Drawn By	R.A. BOTZENHART
Checked By	J.P. HALSTEAD	Bridge Design Supervisor	J.P. HALSTEAD
Date	10/99	Date	10/99

PROJECT	MIDDLESEX-BOLTON	PROJECT NO.	IM-089-2(26)
---------	------------------	-------------	--------------

TYGA CAD Drawing No.	stdbrdet	Date	10/99
Bridge Sheet No.	C-46	Sheet	46 of 307

