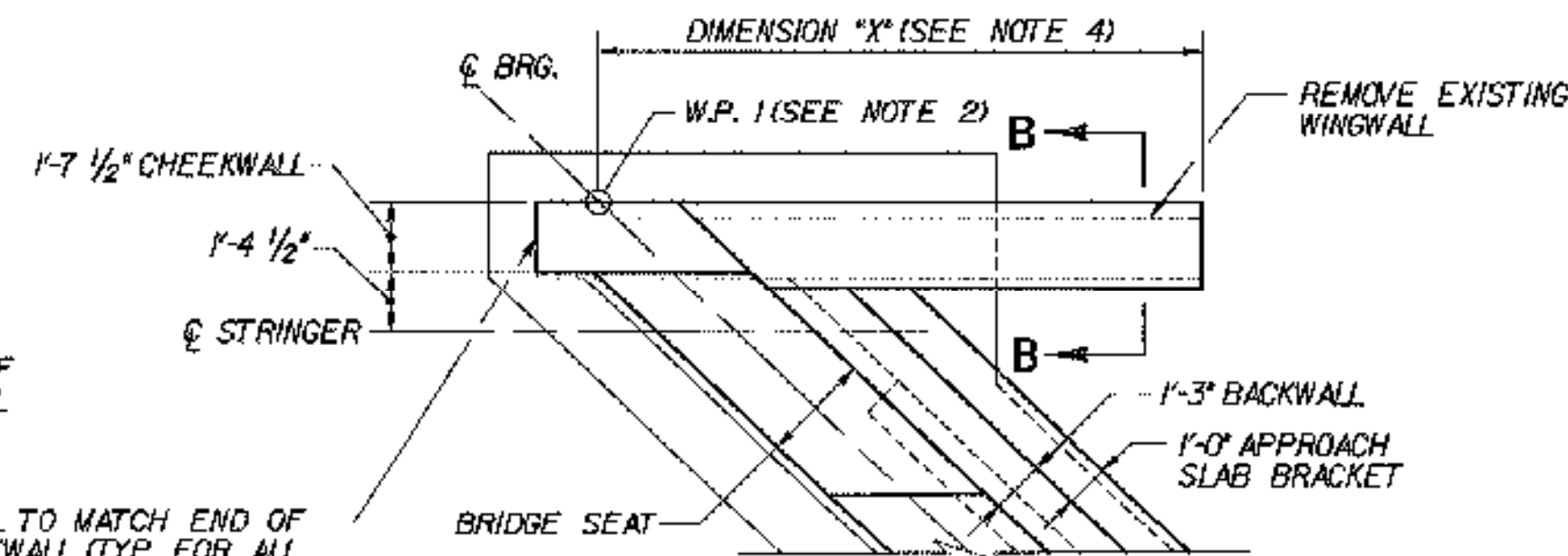


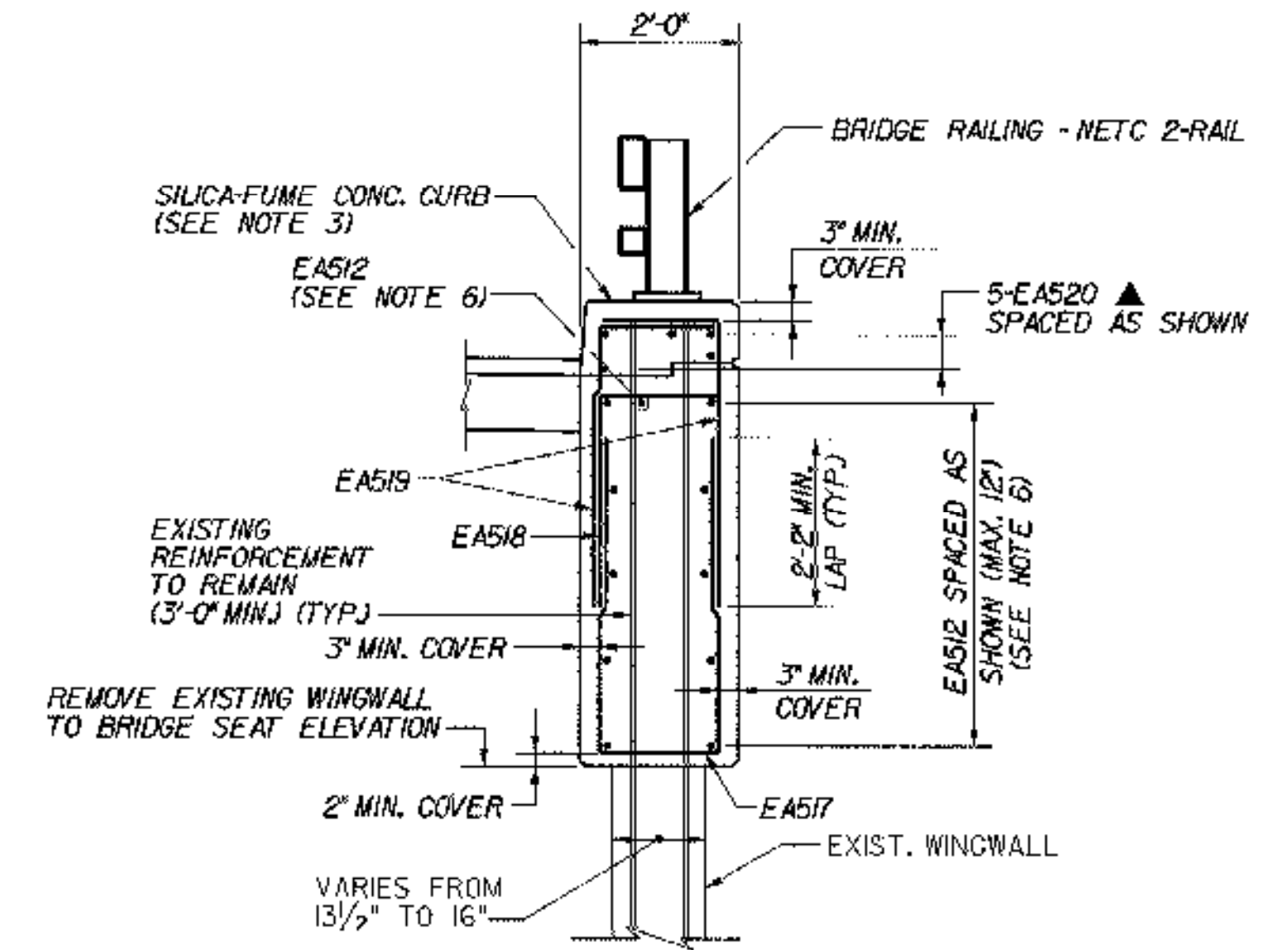
**WINGWALL PLAN AT ACUTE CORNER OF FIXED ABUTMENTS**

SCALE: 1/4"=1'-0"



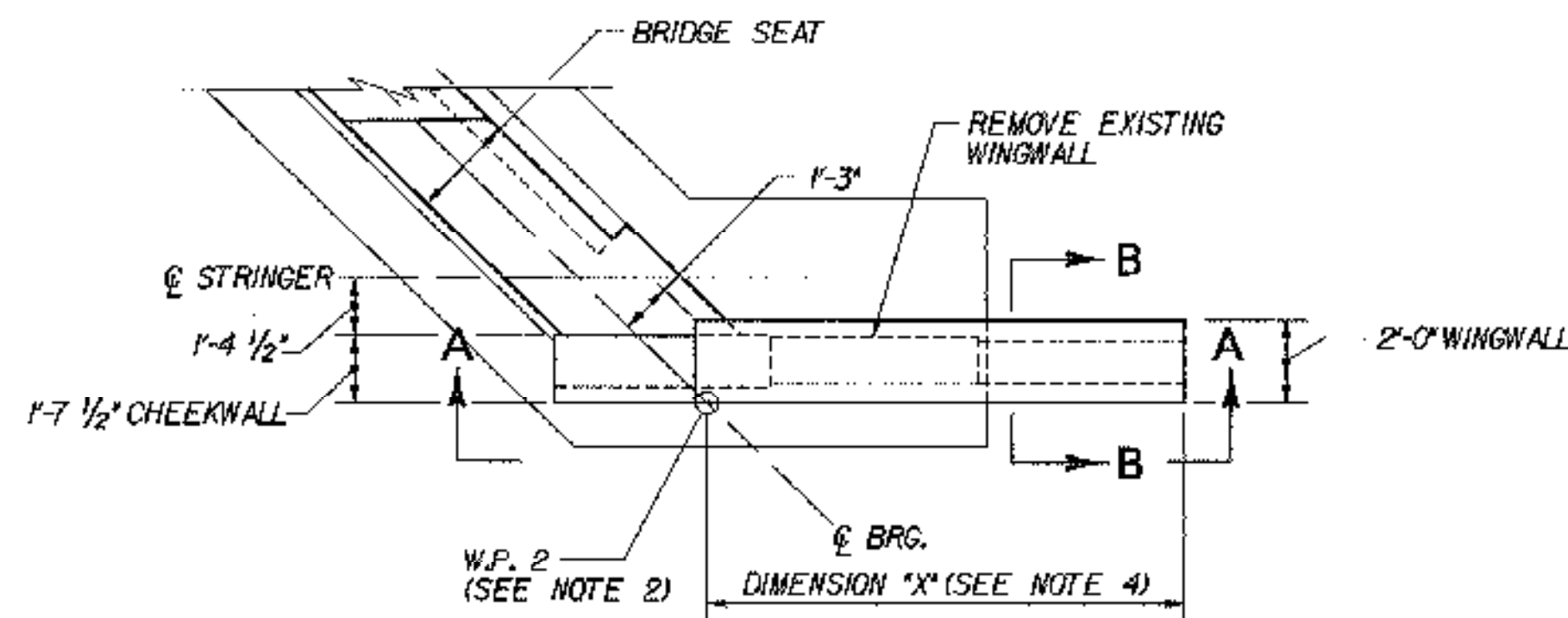
**WINGWALL PLAN AT ACUTE CORNER OF EXPANSION ABUTMENTS**

SCALE: 1/4"=1'-0"



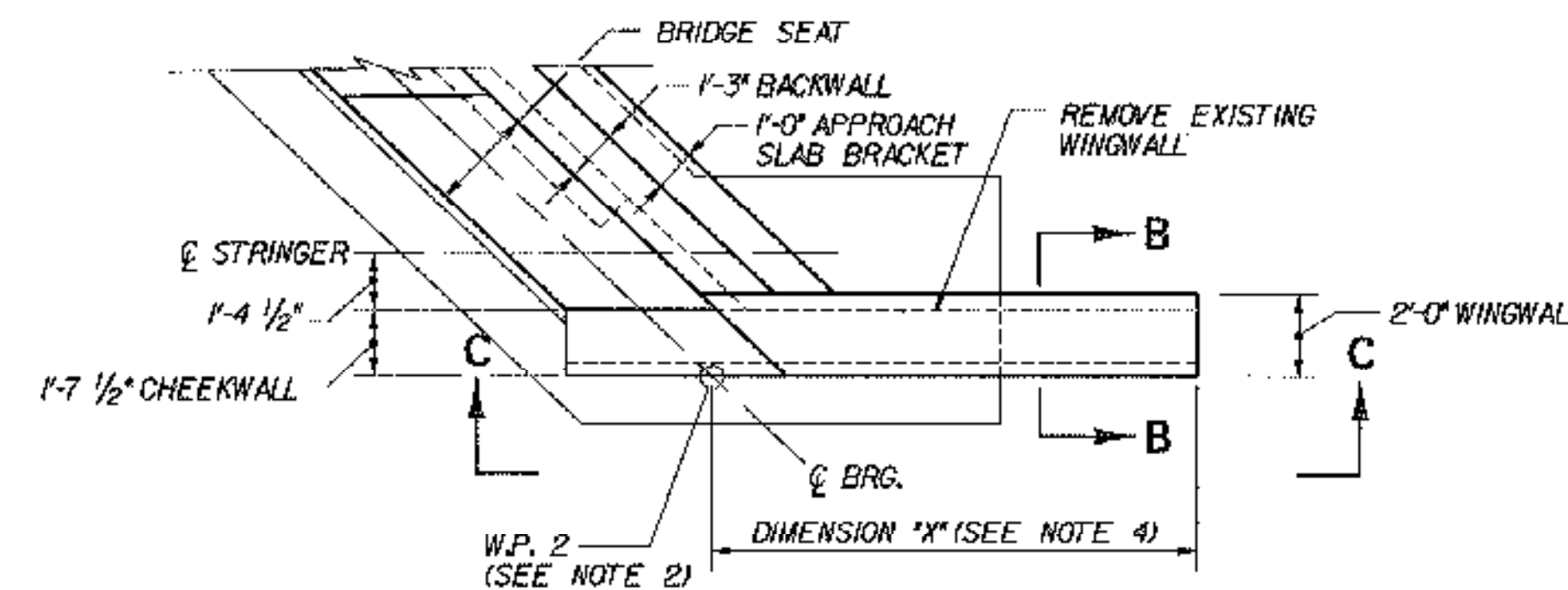
**SECTION B-B (ALL WINGWALLS SIMILAR)**

SCALE: 1/2"=1'-0"



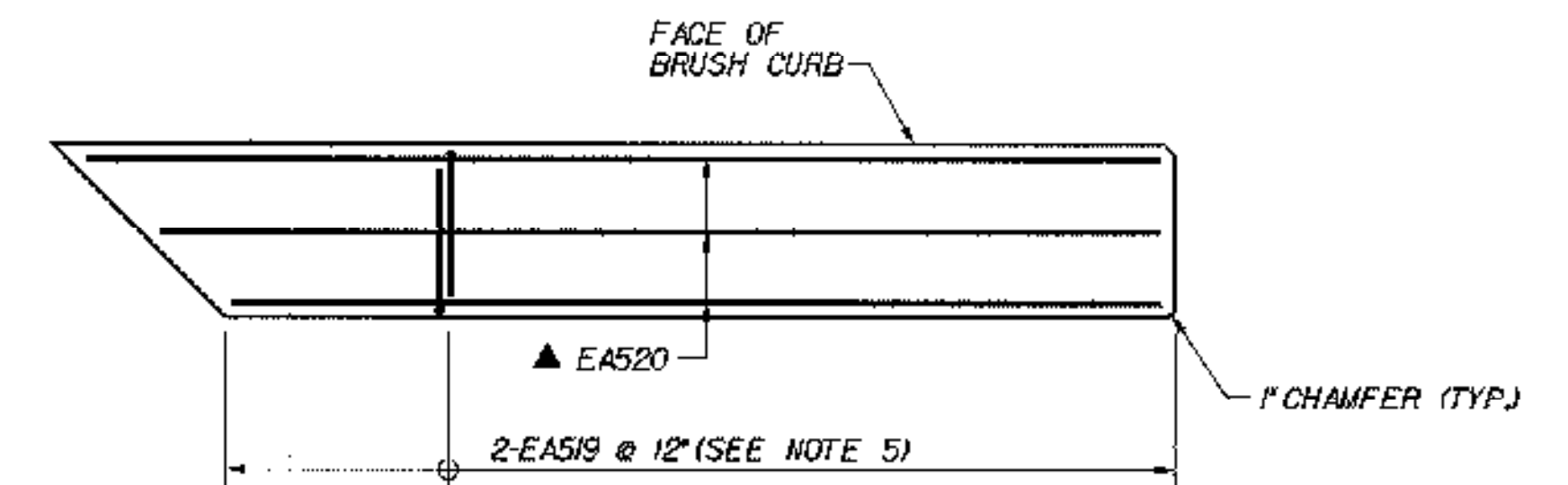
**WINGWALL PLAN AT OBTUSE CORNER OF FIXED ABUTMENTS**

SCALE: 1/4"=1'-0"



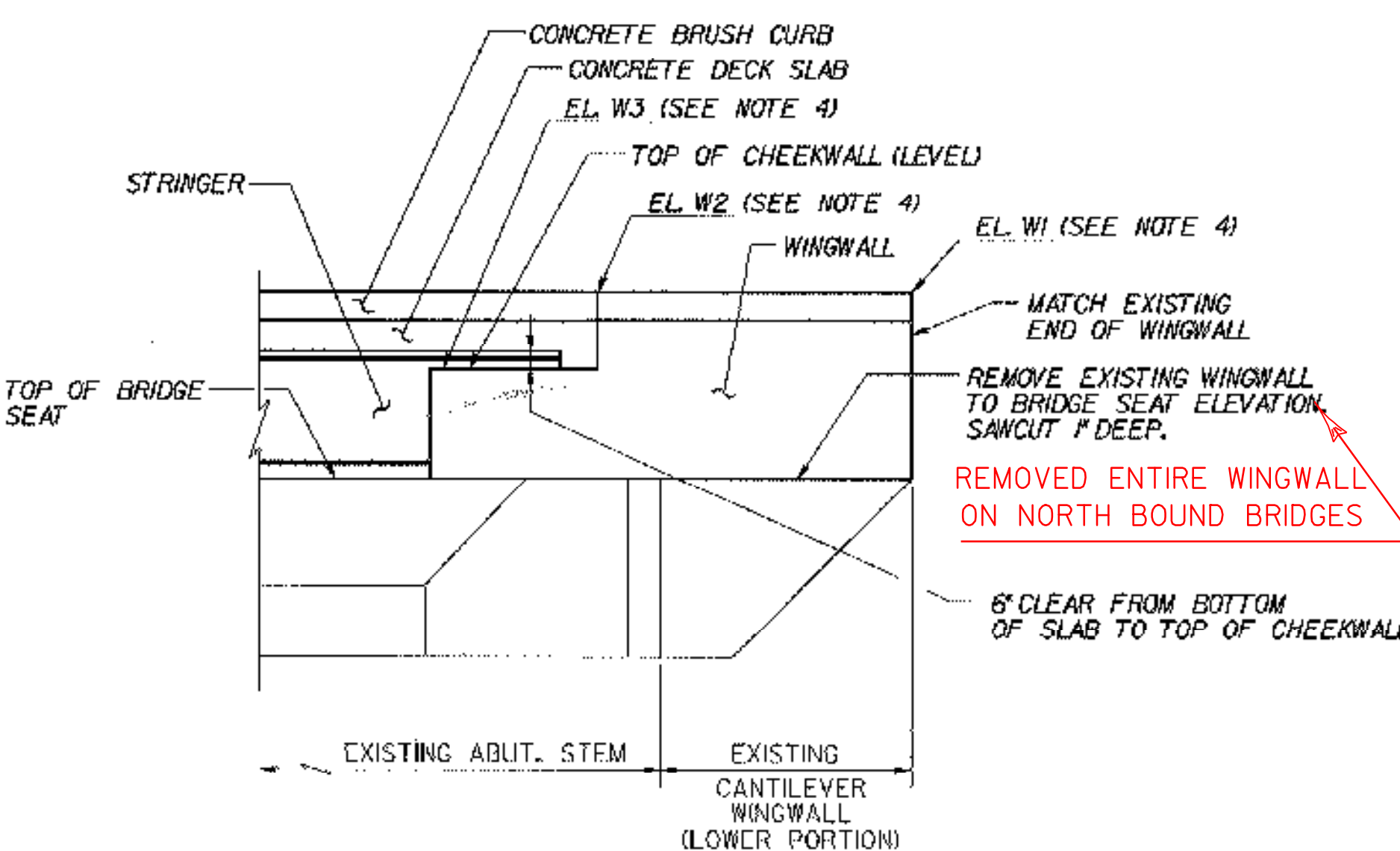
**WINGWALL PLAN AT OBTUSE CORNER OF EXPANSION ABUTMENTS**

SCALE: 1/4"=1'-0"



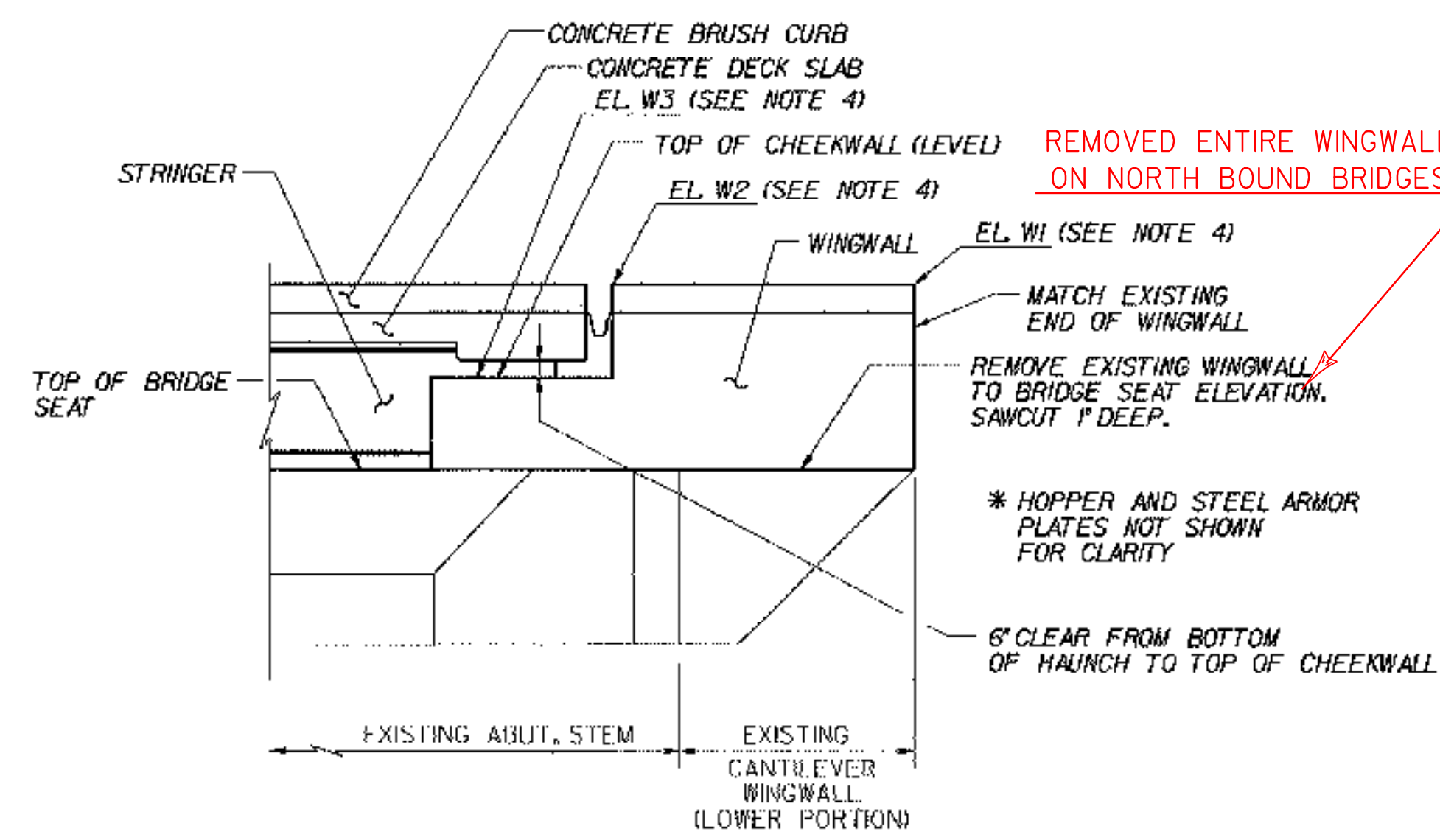
**BRUSH CURB END DETAIL (CURB AT EXPANSION ABUT. SHOWN; FIXED SIMILAR)**

SCALE: 1/2"=1'-0"



**ELEVATION A-A (FIXED ABUTMENTS) (ACUTE CORNER SIMILAR)**

SCALE: 1/4"=1'-0"



**ELEVATION C-C (EXP. ABUTMENTS) (ACUTE CORNER SIMILAR)**

SCALE: 1/4"=1'-0"

**NOTES:**

- DECK SLAB NOT SHOWN IN WINGWALL PLANS FOR CLARITY.
- WORKING POINT (W.P.) 1 AND 2 LOCATIONS ARE SHOWN ON ABUTMENT MASONRY PLANS FOR EACH BRIDGE. FROM THE WORKING POINTS, THE CONTRACTOR MAY CONSTRUCT WINGWALLS CONCENTRIC TO THE CENTERLINE OF CONSTRUCTION, OR ON AN APPROXIMATE TANGENT LINE, AS APPROVED BY THE ENGINEER.
- FOR DIMENSIONS OF CONCRETE CURB, SEE FASCIA DETAIL ON THE TRANSVERSE SECTION FOR EACH BRIDGE.
- FOR TABLE OF DIMENSION \*X\* AND WINGWALL AND BRUSH CURB ELEVATIONS, SEE TYPICAL WINGWALL DETAILS (2 OF 2), BRIDGE SHEET C-44.
- ADDITIONAL EAS19 BARS WILL BE REQUIRED BELOW THE BRIDGE RAIL POSTS. FOR DETAILS OF THE REQUIRED STIRRUP SPACING, SEE NETC 2-RAIL STANDARD SHEET BRI-97. FOR LOCATIONS OF THE BRIDGE RAIL POSTS, SEE THE CURB AND RAIL LAYOUT PLANS FOR EACH BRIDGE.
- AT FIXED ABUTMENTS, LONGITUDINAL REINFORCEMENT IN THE WINGWALL MAY BE EITHER EAS12 OR EAS13, AS SHOWN IN TYPICAL FIXED ABUTMENT REINFORCEMENT, BRIDGE SHEET C-41.

**KEY**

- NF NEAR FACE
- FF FAR FACE
- EF EACH FACE
- ▲ REINFORCEMENT TO BE CUT TO FIT IN THE FIELD

**STATE OF VERMONT AGENCY OF TRANSPORTATION**

Town Of	MIDDLESEX-BOLTON	Bridge No.	
Highway No.	I-89	Log Sta.	
		Surv. Sta.	

**TYPICAL WINGWALL DETAILS (1 OF 2)**

Designed By	P.W. SZUSTAK	Drawn By	R.A. BOTZENHART
Checked By	Date	Bridge Design Supervisor	Date
J.P. HALSTEAD	10/99	J.P. HALSTEAD	10/99
PROJECT	MIDDLESEX-BOLTON	PROJECT NO.	IM-089-2(26)
TVGA CAD Drawing No.	wvdetail	Date	10/99
Bridge Sheet No.	C-43	Sheet	43 of 307