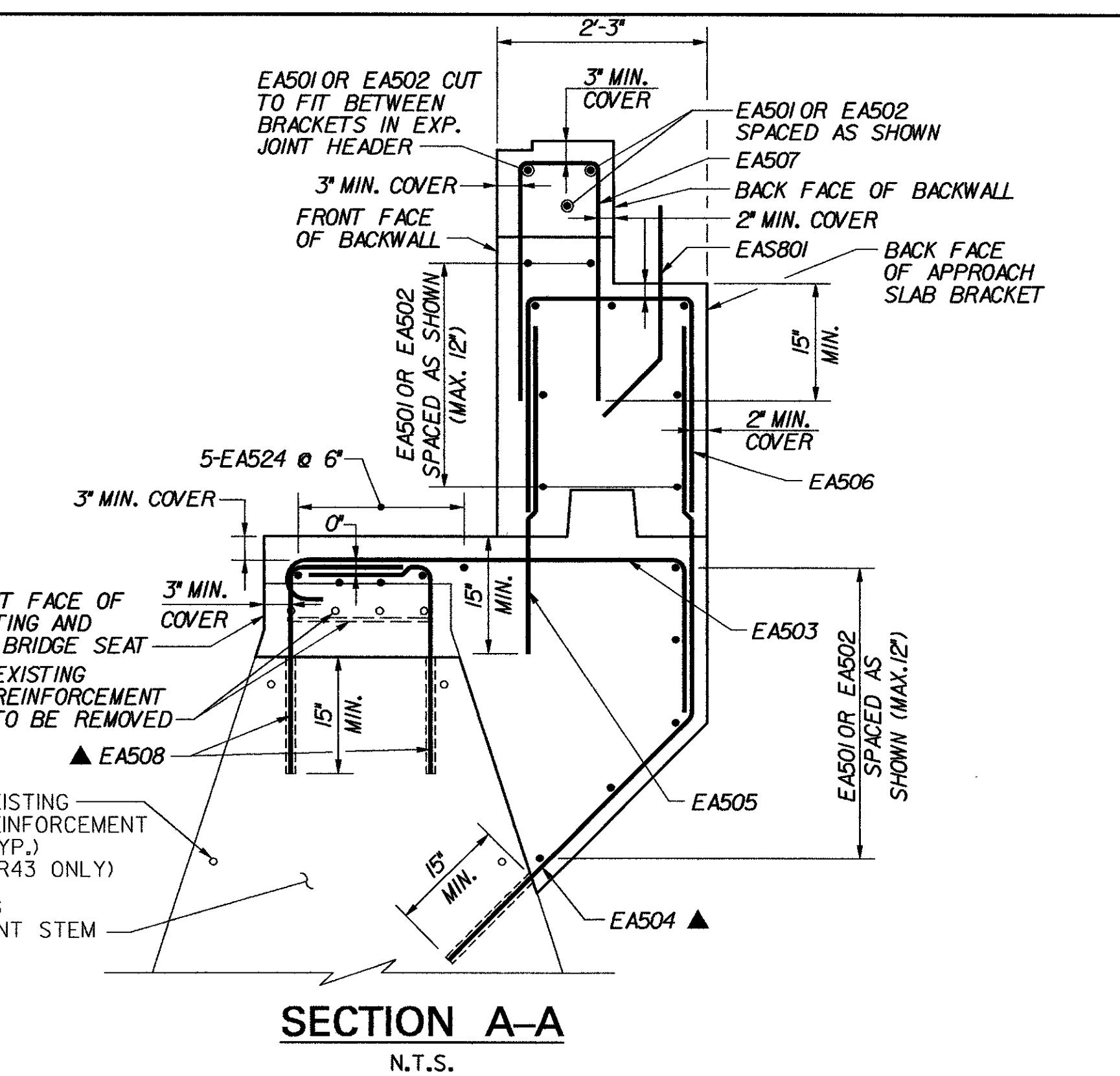


**PLAN**  
N.T.S.

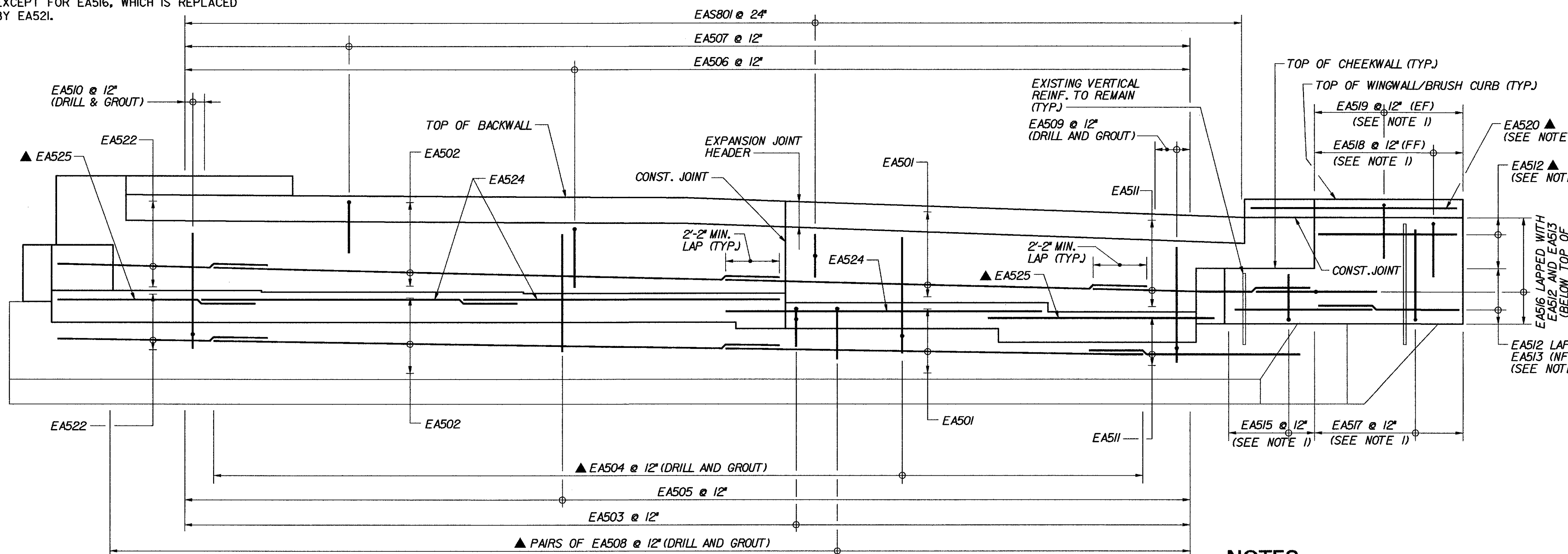
REINFORCEMENT LAYOUT SHOWN IS INTENDED AS GUIDANCE ONLY. CONTRACTOR MUST MAKE ADJUSTMENTS IN ORDER TO FIT ACTUAL FIELD CONDITIONS, AS APPROVED BY THE ENGINEER, AT NO ADDITIONAL EXPENSE TO THE CONTRACT.

NOTE: ACUTE WINGWALL REINFORCEMENT NOT SHOWN FOR CLARITY. LAYOUT SIMILAR TO OBTUSE WINGWALL, EXCEPT FOR EAS16, WHICH IS REPLACED BY EAS21.

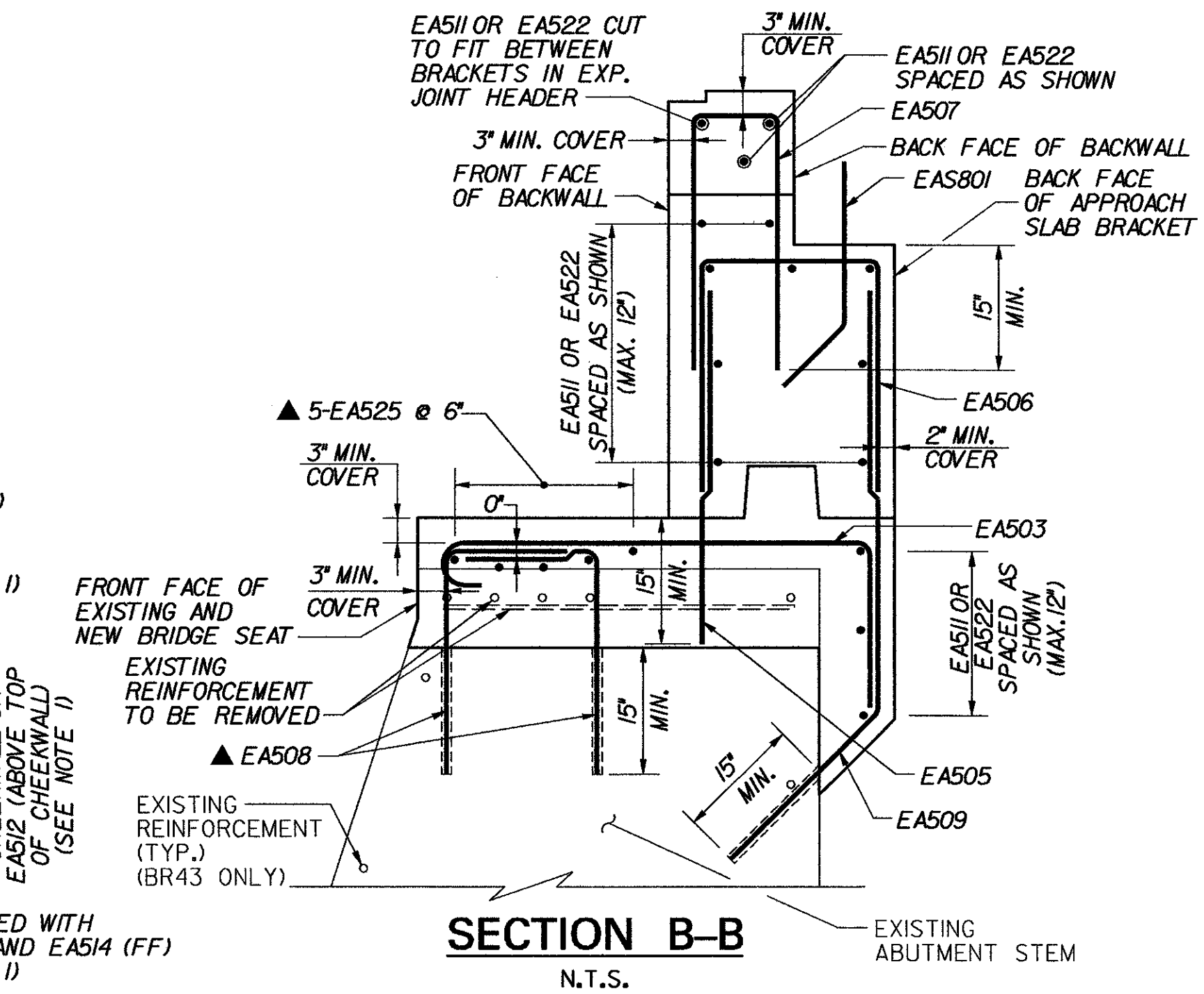
CONSTRUCTION JOINT LOCATED AT STEP IN BRIDGE SEAT. LOCATION SHALL BE REVISED AS DIRECTED BY THE RESIDENT ENGINEER AS REQUIRED TO MATCH ANY CONSTRUCTION JOINT IN THE EXISTING ABUTMENT STEM. REQUIRED REVISIONS TO REINFORCING STEEL LENGTHS WILL BE MADE BY THE CONTRACTOR AT NO ADDITIONAL EXPENSE TO THE CONTRACT.



**SECTION A-A**  
N.T.S.



**ELEVATION**  
N.T.S.



**SECTION B-B**  
N.T.S.

**KEY**  
 NF NEAR FACE  
 FF FAR FACE  
 EF EACH FACE  
 ▲ REINFORCEMENT TO BE CUT TO FIT IN THE FIELD

**NOTES:**  
 1. FOR ADDITIONAL WINGWALL AND BRUSH CURB DETAILS, SEE TYPICAL WINGWALL DETAILS, BRIDGE SHEETS C-43 AND C-44.  
 2. CONCRETE LIMITS AND DIMENSIONS ARE SHOWN IN ABUTMENT MASONRY PLANS FOR EACH BRIDGE.

**STATE OF VERMONT  
AGENCY OF TRANSPORTATION**

Town Of	MIDDLESEX-BOLTON	Bridge No.	
Highway No.	I-89	Log Sta.	
		Surv. Sta.	
<b>TYPICAL EXPANSION ABUTMENT REINFORCEMENT</b>			
Designed By	P.W. SZUSTAK	Drawn By	R.A. BOTZENHART
Checked By	J.P. HALSTEAD	Date	10/99
		Bridge Design Supervisor	J.P. HALSTEAD
		Date	10/99
PROJECT	MIDDLESEX-BOLTON	PROJECT NO.	IM-089-2(26)
TVGA CAD Drawing No.	abrinf_e	Date	10/99
Bridge Sheet No.	C-40	Sheet	40 of 307