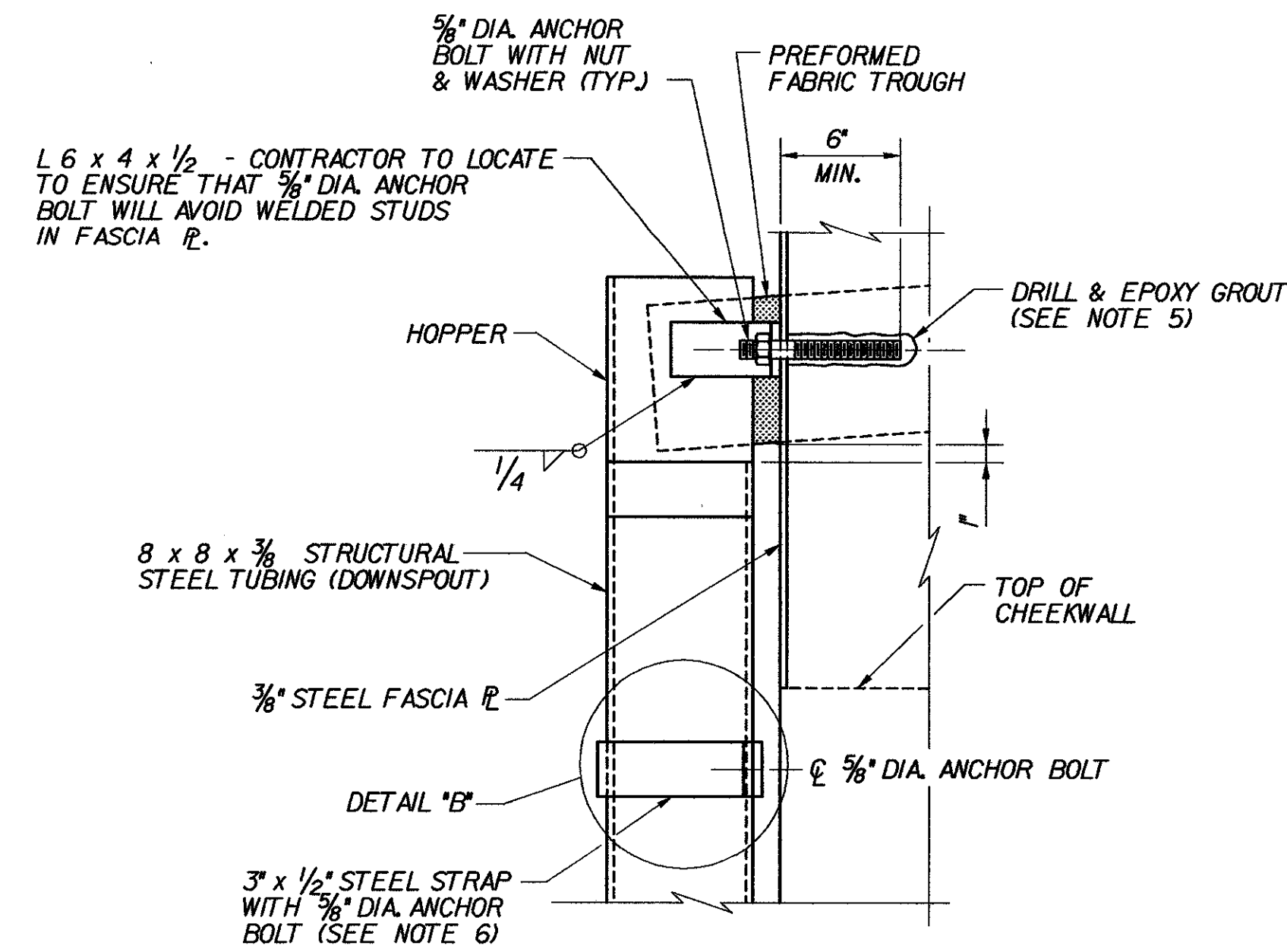


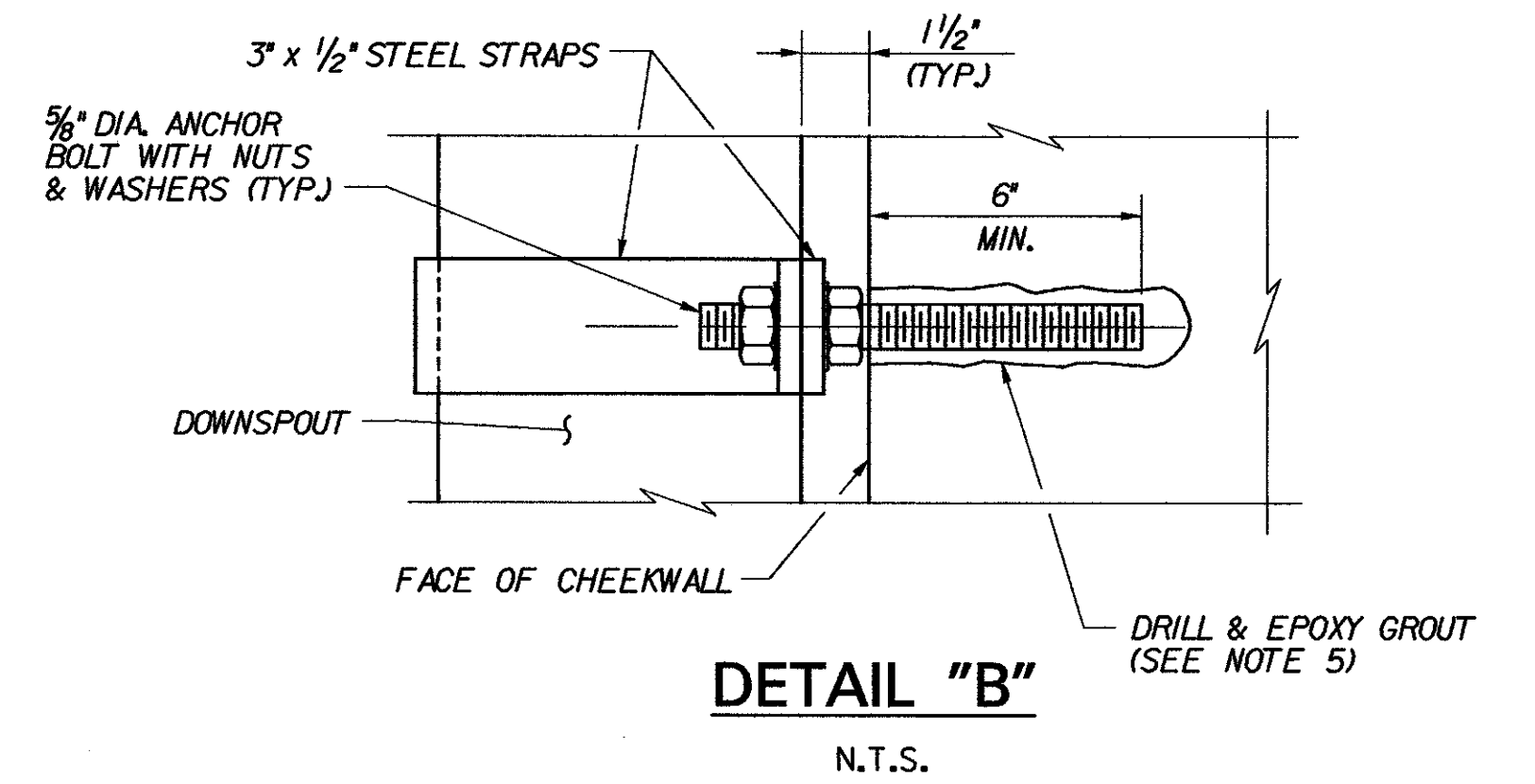
HOPPER LOCATION PLAN

SCALE: 1/2" = 1'-0"



SECTION B-B

SCALE: 1/2" = 1'-0"

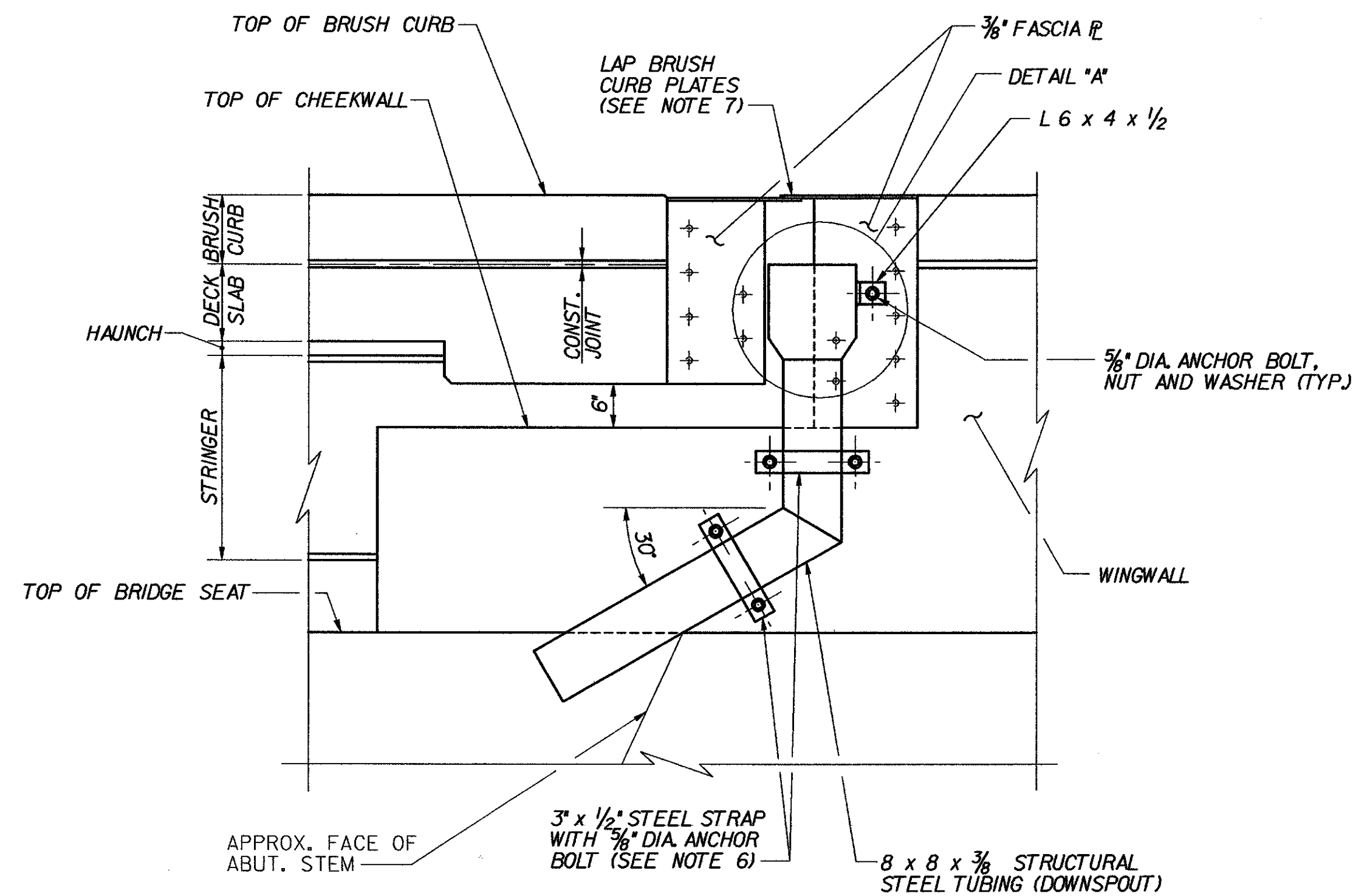


DETAIL "B"

N.T.S.

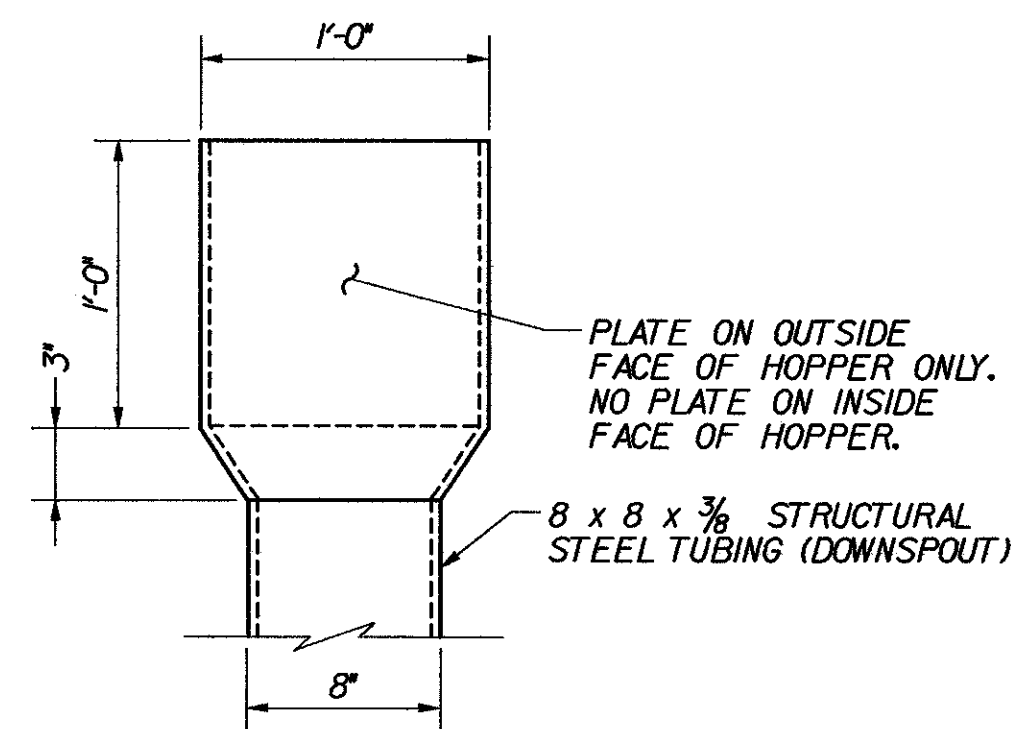
NOTES:

1. WORK THIS SHEET WITH TYPICAL TYPE 'H' ABUTMENT JOINT PLAN, BRIDGE SHEET C-27, TYPE 'H' ABUTMENT JOINT DETAILS (1 OF 3), BRIDGE SHEET C-28, AND TYPICAL TYPE 'H' ABUTMENT JOINT DETAILS (2 OF 3), BRIDGE SHEET C-29.
2. HOPPERS AND ALL COMPONENTS SHALL BE AASHTO M270 GRADE 36 STEEL. STRUCTURAL TUBING (DOWNSPOUT) SHALL BE ASTM A-500 OR A-501 STEEL. ALL STEEL SHALL BE GALVANIZED OR METALIZED IN ACCORDANCE WITH SECTION 506.15 OF THE SPECIFICATIONS. ALL HOPPER AND DOWNSPOUT WORK SHALL BE PAID FOR UNDER ITEM 506.60, "STRUCTURAL STEEL".
3. HOPPERS SHALL BE FABRICATED FROM 3/8" STEEL PLATE. THE FABRICATION WELDS SHALL BE 1/4" FILLET WELDS ON THE INSIDE OF THE HOPPER AND SHALL BE FULL LENGTH TO ENSURE A WATERTIGHT CONTAINER.
4. THE HOPPERS SHALL BE PLACED TO LEAVE A ONE INCH VERTICAL GAP BETWEEN THE BOTTOM OF THE TROUGH AND THE HOPPER. THE TROUGH SHOULD BE ENCLOSED AS MUCH AS POSSIBLE BY THE HOPPER BUT SHOULD NOT BE BENT OR BUCKLED TO RESTRICT THE FLOW OF WATER.
5. ANCHOR BOLTS, NUTS AND WASHERS SHALL CONFORM TO SUBSECTION 714.08 OF THE SPECIFICATIONS, AND BE GALVANIZED IN ACCORDANCE WITH SUBSECTION 506.15. ANCHOR BOLTS SHALL BE DRILLED AND EPOXY GROUTED 6" MINIMUM INTO THE CONCRETE. DRILL AND EPOXY GROUT SYSTEM SHALL BE:
 - DAYTON SUPERIOR SURE-ANCHOR J-51 SYSTEM
 - HILTI, INC. HIT HY-150 SYSTEM
 - UNITEX PRO-POXY 300 FAST SYSTEM
 OR EQUIVALENT APPROVED BY VAOT MATERIALS SECTION. ALL COSTS FOR DRILLING AND EPOXY GROUTING ANCHOR BOLTS SHALL BE SUBSIDIARY TO ITEM 506.60, "STRUCTURAL STEEL".
6. STRAPS SHALL NOT BE BENT IN THE FIELD.
7. LAP CURB PLATES IN DIRECTION OF TRAFFIC. FOR DIRECTION OF LAP AT EACH EXPANSION JOINT LOCATION, SEE TABLE ON TYPICAL TYPE 'H' ABUTMENT JOINT PLAN, BRIDGE SHEET C-27.



ELEVATION A-A

N.T.S.



DETAIL "A"

SCALE: 1/2" = 1'-0"

**STATE OF VERMONT
AGENCY OF TRANSPORTATION**

Town Of	MIDDLESEX-BOLTON	Bridge No.	
Highway No.	I-89	Log Sta.	
		Surv. Sta.	

TYPE "H" ABUTMENT JOINT DETAILS (3 OF 3)

Designed By	P.W. SZUSTAK	Drawn By	R.A. BOTZENHART
Checked By	J.P. HALSTEAD	Date	10/99
		Bridge Design Supervisor	J.P. HALSTEAD Date 10/99

PROJECT	MIDDLESEX-BOLTON	PROJECT NO.	IM-089-2(26)
---------	------------------	-------------	--------------

TVGA CAD Drawing No.	h-jointd3	Date	10/99
Bridge Sheet No.	C-30	Sheet	30 of 307