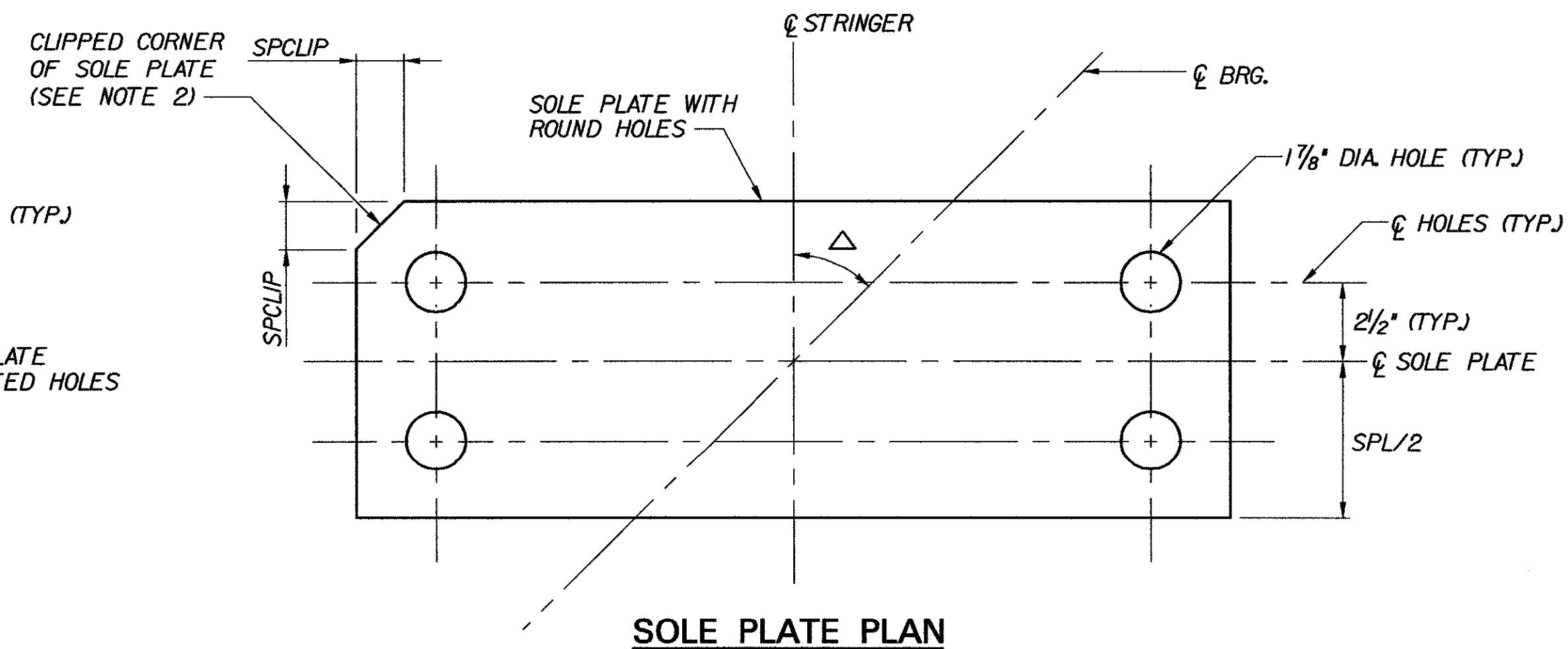
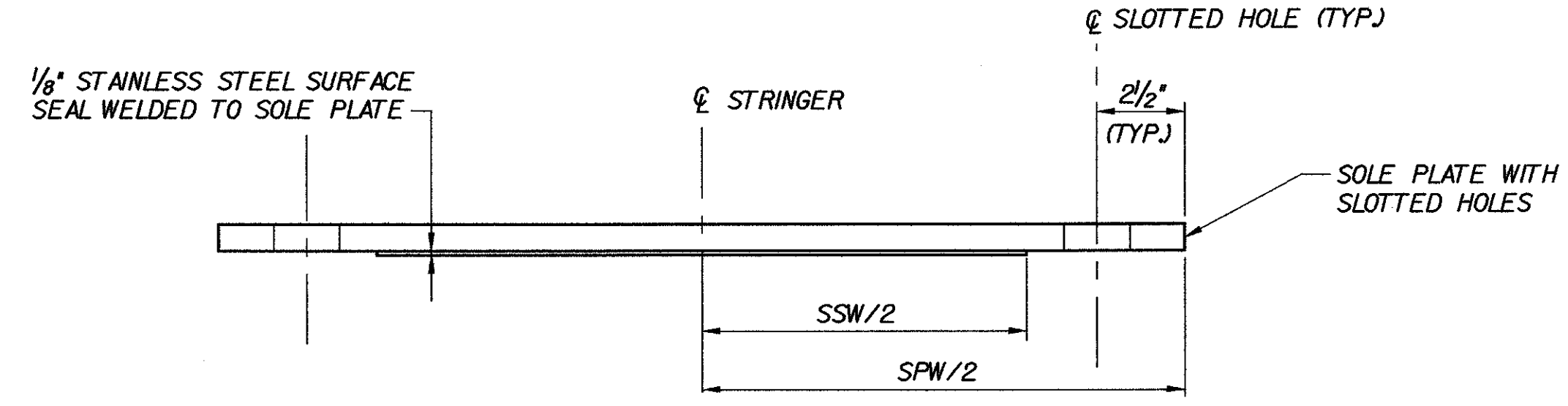


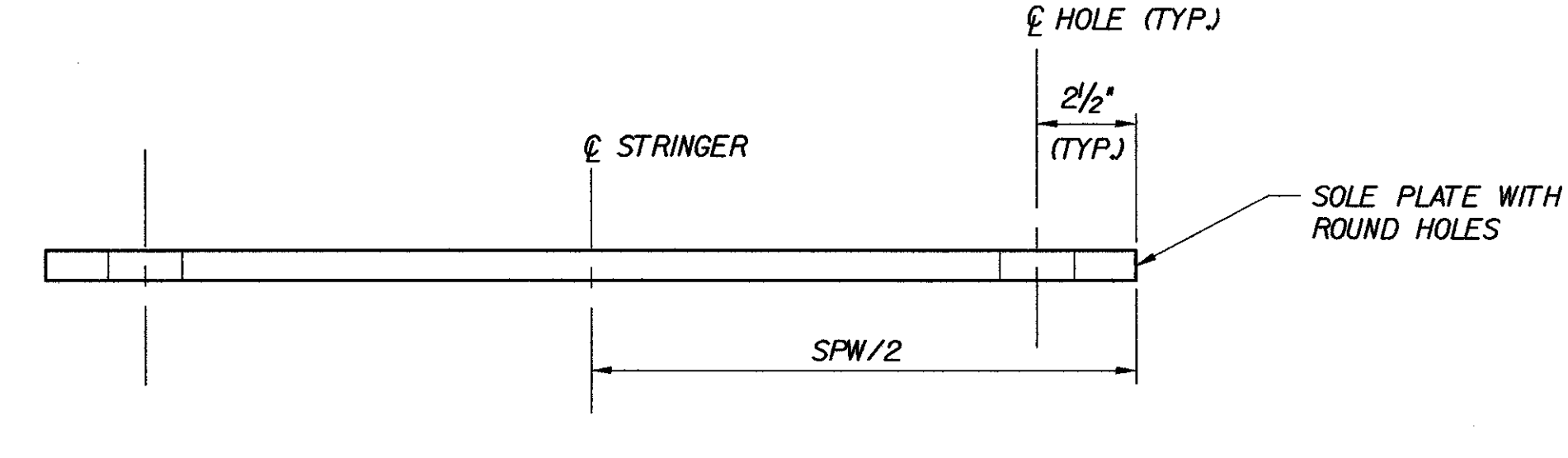
SOLE PLATE PLAN



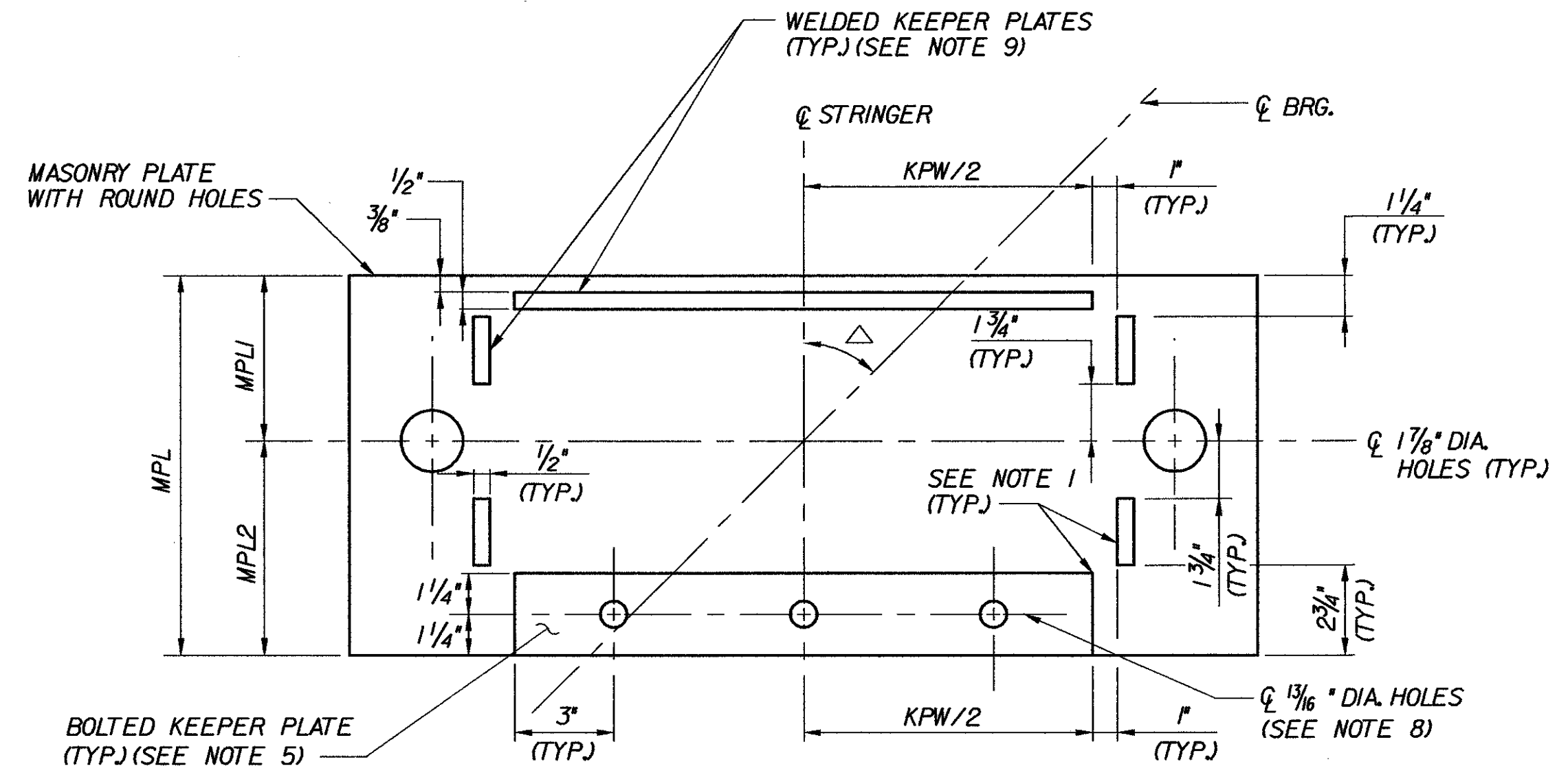
SOLE PLATE PLAN



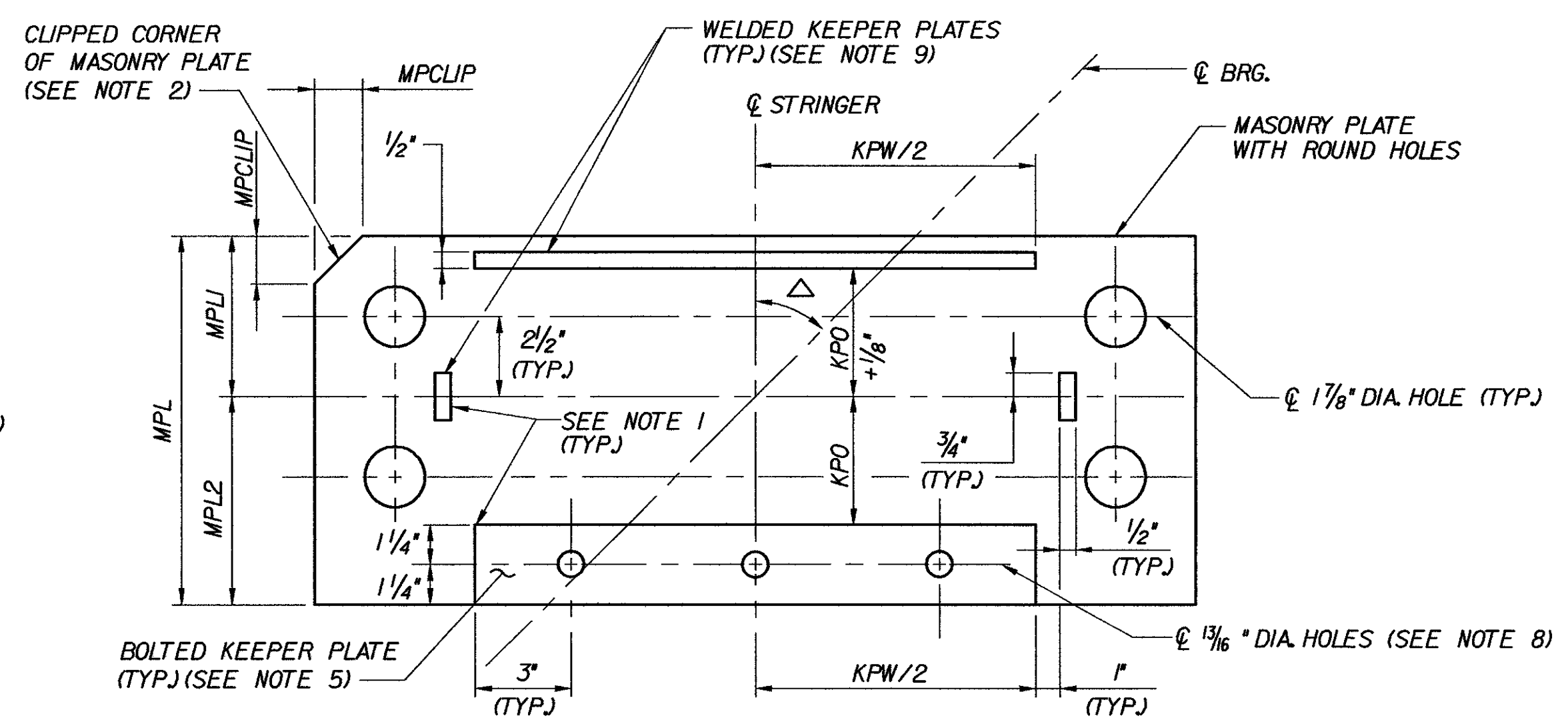
SOLE PLATE ELEVATION



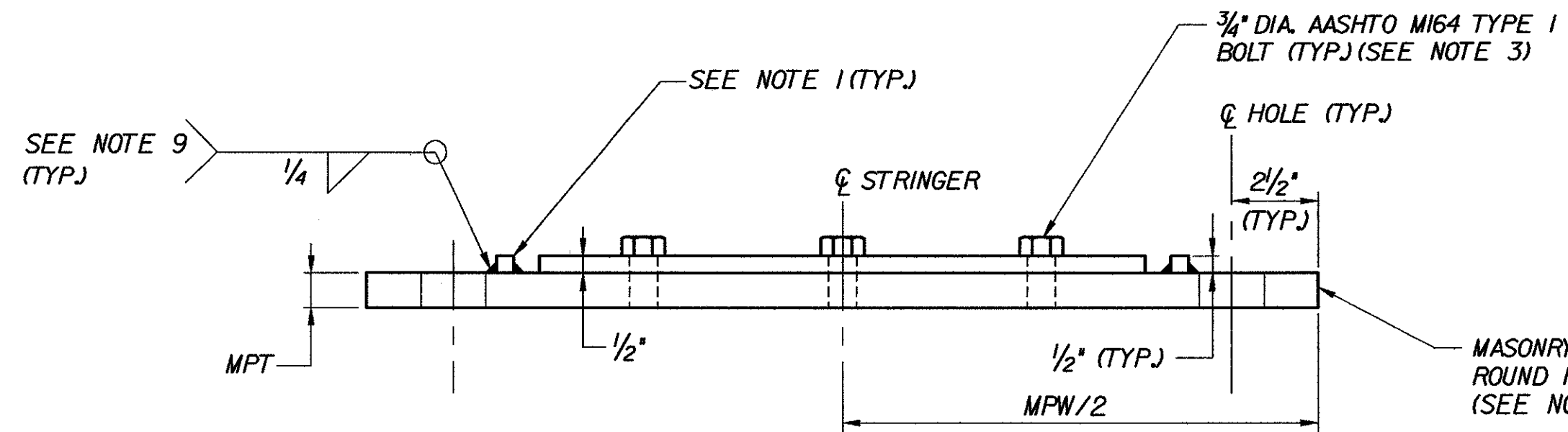
SOLE PLATE ELEVATION



MASONRY PLATE PLAN



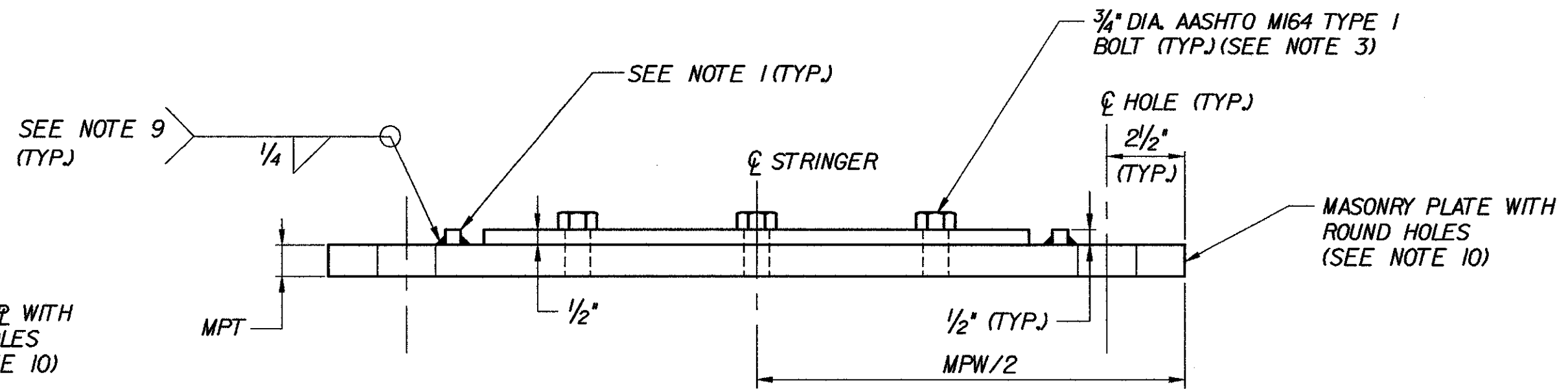
MASONRY PLATE PLAN



MASONRY PLATE ELEVATION

EXPANSION BEARING DETAILS

NOT TO SCALE



MASONRY PLATE ELEVATION

FIXED BEARING DETAILS

NOT TO SCALE

NOTES:

- SPECIAL CARE SHALL BE TAKEN TO ENSURE THAT THE INSIDE CORNERS OF ALL KEEPER PLATES ARE GROUND PER SUBSECTION 531.04 OF THE SPECIFICATIONS TO REMOVE ALL SHARP EDGES WHICH MIGHT COME INTO CONTACT WITH THE ELASTOMERIC BEARING.
- SOLE AND MASONRY PLATES AT FIXED BEARINGS MAY REQUIRE ONE CORNER TO BE CLIPPED TO CLEAR CURTAINWALL AT ABUTMENTS ONLY. SEE TABLE ON BRIDGE SHEET C-22 FOR CLIP DIMENSIONS.
- KEEPER BOLT LENGTH SHALL BE 1 1/2". COAT KEEPER BOLTS AND HOLES WITH "NEVER SEIZE GREASE". BOLTS SHALL BE FITTED WITH 3/16" THICK WASHERS AND TIGHTENED TO A SNUG FIT. WASHERS SHALL CONFORM TO AASHTO M164.
- SKEW DIRECTION SHOWN IS "AHEAD RIGHT".
- BOLTED KEEPER PLATES ARE REMOVABLE TO ALLOW FOR FUTURE REPLACEMENT OF ELASTOMERIC BEARINGS, IF REQUIRED.
- SEE BRIDGE SHEET C-22 FOR BEARING NOTES.
- SEE BRIDGE SHEET C-21 FOR FIXED BEARING DETAILS. SEE BRIDGE SHEET C-22 FOR FIXED BEARING TABLES. SEE BRIDGE SHEET C-23 FOR EXPANSION BEARING DETAILS. SEE BRIDGE SHEET C-24 FOR EXPANSION BEARING TABLES.
- THE HOLES IN THE MASONRY PLATE FOR THE KEEPER PLATE BOLTS SHALL BE THREADED FOR THE ENTIRE THICKNESS OF THE MASONRY PLATE. THE KEEPER PLATE HOLES SHALL NOT BE THREADED.
- WELDING PROCEDURE SHALL PROVIDE SUFFICIENT PREHEAT TO ENSURE SOUNDNESS OF THE WELD.
- THE MASONRY PLATES SHALL BE COMPLETELY FABRICATED WHEN GALVANIZED OR METALIZED EXCEPT THAT THE BOLTED KEEPER PLATES SHALL BE GALVANIZED OR METALIZED SEPARATELY.

STATE OF VERMONT AGENCY OF TRANSPORTATION			
Town Of	MIDDLESEX-BOLTON	Bridge No.	
Highway No.	I-89	Log Sta.	
		Surv. Sta.	
SOLE & MASONRY PLATE DETAILS			
Designed By	K.L. JAMES	Drawn By	N.J. HOYT
Checked By	M.H. GALLO	Date	10/99
		Bridge Design Supervisor	J.P. HALSTEAD Date 10/99
PROJECT	MIDDLESEX-BOLTON	PROJECT NO.	IM-089-2(26)
TVGA CAD Drawing No.	I27smpl.dgn	Date	10/99
Bridge Sheet No.	C-25	Sheet	25 of 307

Hayashi Corporation
Consulting Engineers